

# USB 2.0 Hard Drive Enclosure

External 1.8" USB 2.0 Hard Drive Enclosure with One Touch Backup

IDECASE18U2B

Instruction Manual



Actual product may vary from photo

**StarTech.com**

The Professionals' Source for Hard-to-Find Computer Parts

## **FCC Compliance Statement**

This equipment has been tested and found to comply with the limits for a Class B digital device, pursuant to part 15 of the FCC Rules. These limits are designed to provide reasonable protection against harmful interference in a residential installation. This equipment generates, uses and can radiate radio frequency energy and, if not installed and used in accordance with the instructions, may cause harmful interference to radio communications. However, there is no guarantee that interference will not occur in a particular installation. If this equipment does cause harmful interference to radio or television reception, which can be determined by turning the equipment off and on, the user is encouraged to try to correct the interference by one or more of the following measures:

- Reorient or relocate the receiving antenna.
- Increase the separation between the equipment and receiver.
- Connect the equipment into an outlet on a circuit different from that to which the receiver is connected.
- Consult the dealer or an experienced radio/TV technician for help.

## **Use of Trademarks, Registered Trademarks, and other Protected Names and Symbols**

This manual may make reference to trademarks, registered trademarks, and other protected names and/or symbols of third-party companies not related in any way to StarTech.com. Where they occur these references are for illustrative purposes only and do not represent an endorsement of a product or service by StarTech.com, or an endorsement of the product(s) to which this manual applies by the third-party company in question. Regardless of any direct acknowledgement elsewhere in the body of this document, StarTech.com hereby acknowledges that all trademarks, registered trademarks, service marks, and other protected names and/or symbols contained in this manual and related documents are the property of their respective holders.

# Table of Contents

<b>Introduction</b> .....	<b>.1</b>
<b>Features</b> .....	<b>.1</b>
<b>Before you begin</b> .....	<b>.1</b>
System requirements .....	.1
Contents .....	.1
<b>Installation</b> .....	<b>.2</b>
Installation .....	.2
<b>Specifications</b> .....	<b>.5</b>
<b>Technical Support</b> .....	<b>.5</b>
<b>Warranty Information</b> .....	<b>.5</b>

## **Introduction**

Thank you for purchasing a StarTech.com External USB 2.0 1.8" hard drive enclosure. This product allows you to turn a 1.8" Hitachi hard drive into a portable storage solution. The enclosure allows you to quickly connect to your computer, for manual or automated file transfers.

## **Features**

- Lightweight aluminum construction
- Compact design
- Easy hard drive installation
- USB 2.0 data transfer speeds up to 480 Mbits/sec
- Supports plug and play connectivity with host computer

## **Before You Begin**

### **System Requirements**

- Two available USB ports
- Operating system requirement: Windows 98SE/ME/2000/XP, Mac OS 9.0 and higher
- 1.8" Hitachi hard drive

### **Contents**

This package should contain:

- External USB 2.0 1.8" hard drive enclosure (1)
- USB 'Y' Cable (Type A (x2) to Mini-B)
- Driver CD (1)
- User manual (1)

## Installation

### Installing the 1.8" Hitachi hard drive

1. Loosen the screws from the rear plate
2. Remove the rear plate from the body of the enclosure
3. Connect the ATA data connector located on the inside of the rear panel to your Hitachi hard drive.
4. Once the hard drive is securely seated, slide the rear panel and hard drive back into the aluminum enclosure.
5. Re-fasten the screws that were loosened in Step 1.

### Connecting the hard drive enclosure to the host computer

1. Connect the mini type 'B' USB connector to the available port on the back of IDECASE18U2B. Connect the opposite ends of this cable to available USB ports on the host computer.
2. The computer should now recognize that your removable storage has been added.

### Windows 98SE Driver installation

For Windows 98SE systems, USB drivers will require installation. The driver installation program can be found on the Driver/Software CD in the following location:

**D:\USB driver Setup**, where D:\ designates the CD-ROM/Optical drive being used.

Please locate this file and double-click on it to execute the installation program.

### Installing the iBackup utility

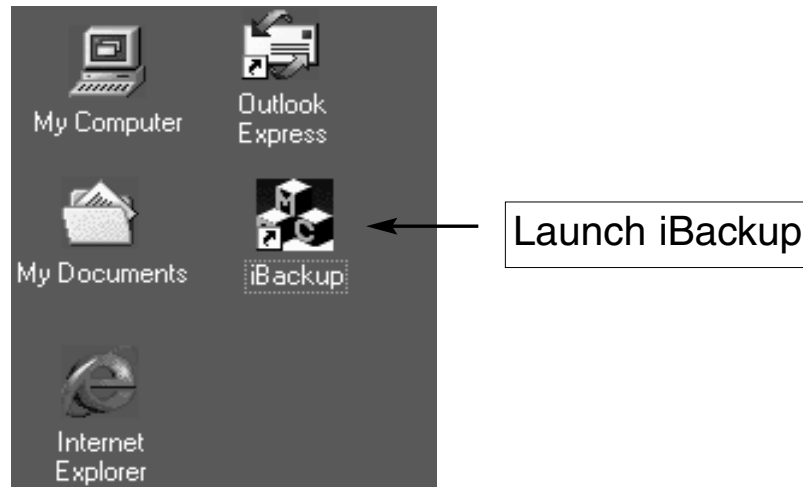
1. Insert or ensure that the Driver/Software CD is in the CD/DVD-ROM drive.
2. Browse to: D:\iBackup\_Setup, and double-click on the icon to begin installing the backup software.
3. This will launch the InstallShield Wizard, which will install the iBackup software. Proceed by clicking on **Next**.
4. When the InstallShield Wizard indicates that setup is complete, please select **Yes, I want to restart my computer now**, and click on the **Finish** button.

## Configuring the iBackup Software

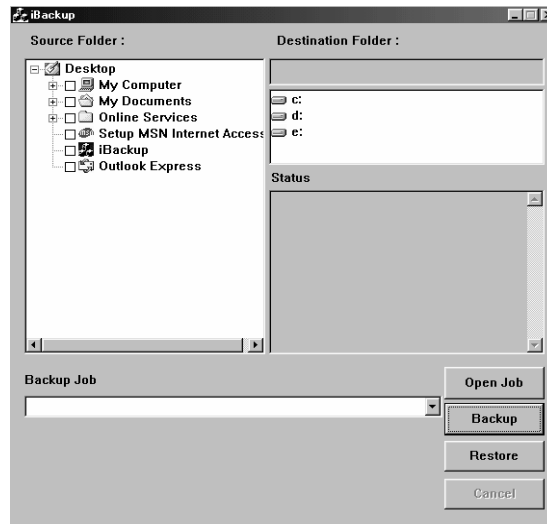
Once the computer has rebooted, you will be able to access the iBackup software by clicking through the Start menu, or by locating the iBackup icon on your desktop:



or

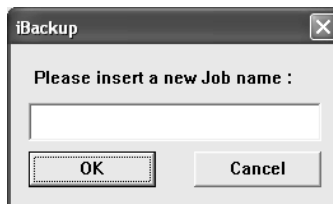


Once the utility launches, the following screen will be displayed:



## Creating backup jobs

1. Select the backup source folder by placing a checkmark in the corresponding box. To select the backup destination, double-click on the letter designation located under **Destination Folder**, which will open a listing of sub-directories, which will allow you to specify the desired location of backed up files.
2. Click on **Backup** to initiate the backup process. You will be asked to **insert a new Job name**. Here, enter a name you will remember for future backups/restorations, and click on **OK**.



3. For future backups/restorations that will involve the folders used in steps 1-3, please select the name under which the backup was saved, using the dropdown menu labelled **Backup job**.

## Using the restore function

Once you have created a **Backup job**, restorations will be automated based on the parameters you've specified as the source and destination folders. Select the name of the backup from the dropdown menu provided, and click on **Restore**. This will restore the contents of the source folder, based on the files that were present when the last backup was made.

## Specifications

<b>Product Dimensions</b>	88 x 80 x 10mm
<b>Operating System Support</b>	Windows 98SE/ME/2000/XP, Mac OS 9.0 and above
<b>Chipset</b>	VIA VT6204
<b>Max. Data Transfer Rate</b>	480 Mbps (USB 2.0)
<b>Connectors</b>	1 x USB Mini B Male 1 x DC 5V plug adapter
<b>Form Factor</b>	Supports 1.8" Hitachi Hard Drives
<b>Bus Type</b>	USB
<b>Certifications (regulatory etc.)</b>	FCC, CE, RoHS

## Technical Support

StarTech.com's lifetime technical support is an integral part of our commitment to provide industry-leading solutions. If you ever need help with your product, visit [www.startech.com/support](http://www.startech.com/support) and access our comprehensive selection of online tools, documentation, and downloads.

## Warranty Information

This product is backed by a 1 year warranty. In addition, StarTech.com warrants its products against defects in materials and workmanship for the periods noted, following the initial date of purchase. During this period, the products may be returned for repair, or replacement with equivalent products at our discretion. The warranty covers parts and labor costs only. StarTech.com does not warrant its products from defects or damages arising from misuse, abuse, alteration, or normal wear and tear.

## Limitation of Liability

In no event shall the liability of StarTech.com Ltd. and StarTech.com USA LLP (or their officers, directors, employees or agents) for any damages (whether direct or indirect, special, punitive, incidental, consequential, or otherwise), loss of profits, loss of business, or any pecuniary loss, arising out of or related to the use of the product exceed the actual price paid for the product.

Some states do not allow the exclusion or limitation of incidental or consequential damages. If such laws apply, the limitations or exclusions contained in this statement may not apply to you.

## **About StarTech.com**

StarTech.com is “The Professionals’ Source for Hard-to-Find Computer Parts”. Since 1985, we have been providing IT professionals with the quality products they need to complete their solutions. We offer an unmatched selection of computer parts, cables, server management solutions and A/V products and serve a worldwide market through our locations in the United States, Canada, the United Kingdom and Taiwan.

Visit [www.startech.com](http://www.startech.com) for complete information about all our products and to access exclusive interactive tools such as the Parts Finder and the KVM Reference Guide. StarTech.com makes it easy to complete almost any IT solution. Find out for yourself why our products lead the industry in performance, support, and value.