



Diamond Tub & Showers Spec Sheet

Model: TOAW 724225 R/L

Description: Tub Only with Apron and Wainscot (Left Drain Shown)

Specifications

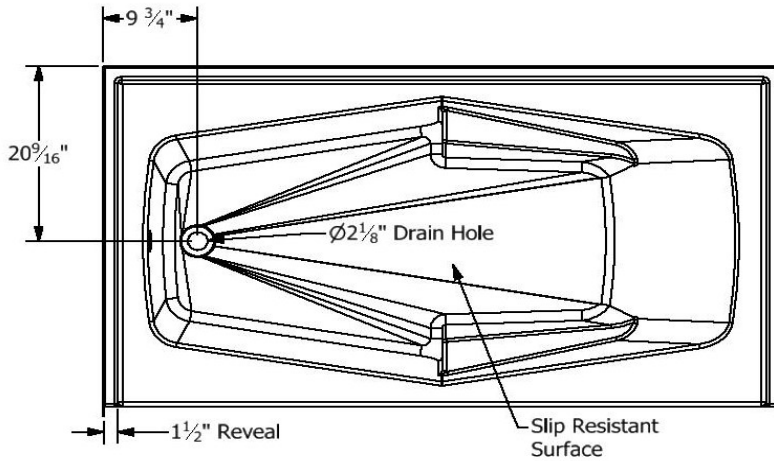
Model #	Material	Wall Finish	Pieces	Drain	Apron Height	Net Weight Lbs.
TOAW 724225	Fiberglass/Gelcoat	Smooth	1	R/L	19 1/2"	

Sump Data

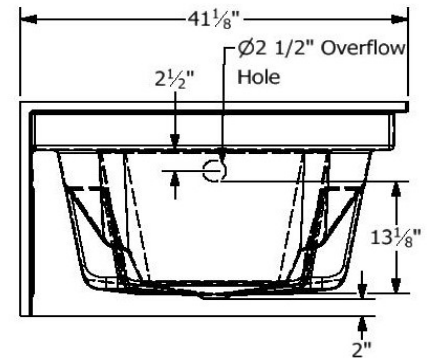
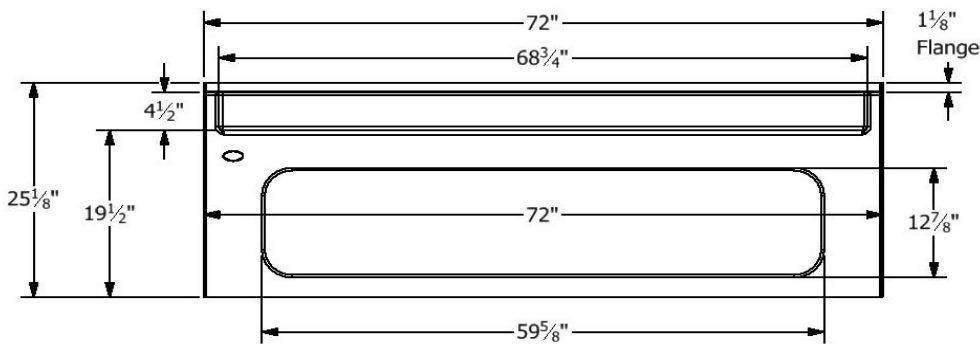
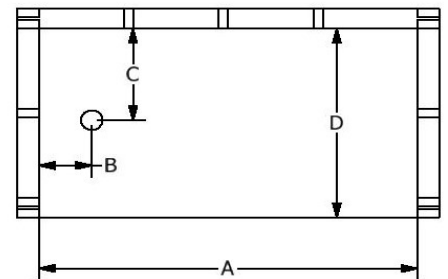
Top of Drain to Bottom of Overflow	Capacity to Overflow Gallons	Top Dimensions		Bottom Dimensions	
		Length	Width	Length	Width
13 1/8"	67.7	62 1/4"	33"	45 3/4"	21 3/4"

Framing Dimensions

A	B	C	D
72"	9 3/4"	20 9/16"	41 1/8"



Framing Specifications



Certified to conform to ANSI Z124.1 and ASTM E-162 Flame Spread Rating 200 or less and is under a program of factory

Manufactured by Frontline
 ICC
ES
 c PMG
 10/21/21



Diamond Tub & Showers Spec Sheet

Model: TOAW 724227 R/L

Description: Tub Only with Apron and Wainscot (Left Drain Shown)

Specifications

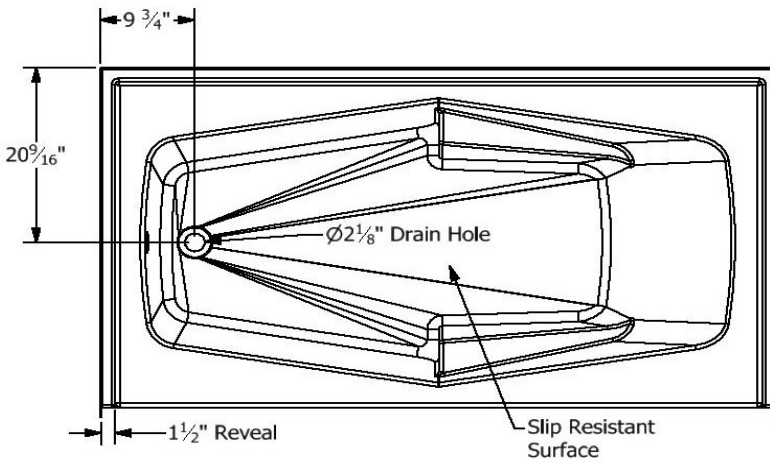
Model #	Material	Wall Finish	Pieces	Drain	Apron Height	Net Weight Lbs.
TOAW 724227	Fiberglass/ Gelcoat	Smooth	1	R/L	21 1/2"	

Sump Data

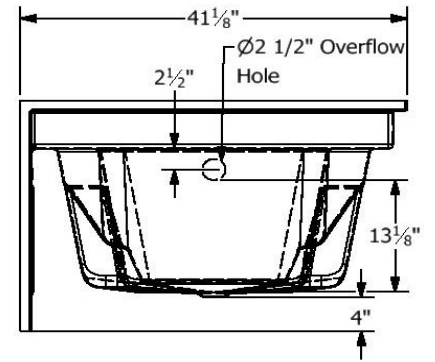
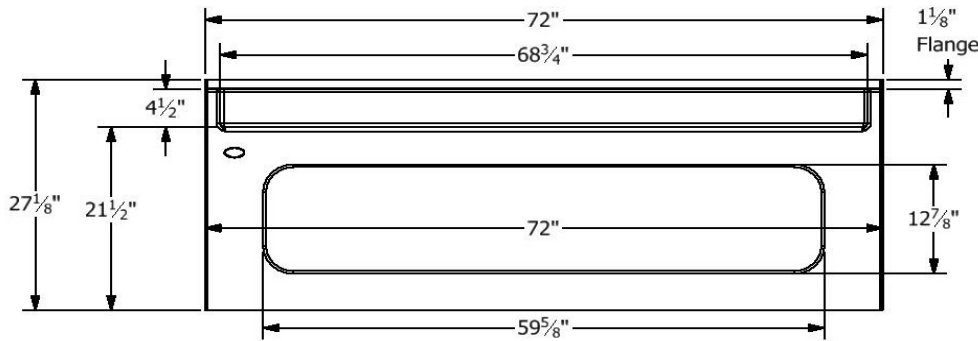
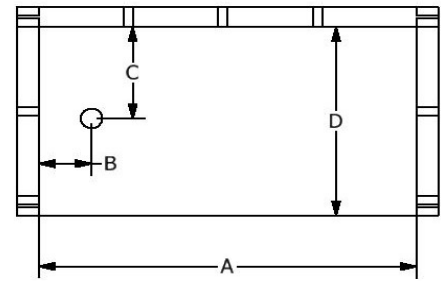
Top of Drain to Bottom of Overflow	Capacity to Overflow Gallons	Top Dimensions		Bottom Dimensions	
		Length	Width	Length	Width
13 1/8"	67.7	62 1/4"	33"	45 3/4"	21 3/4"

Framing Dimensions

A	B	C	D
72"	9 3/4"	20 9/16"	41 1/8"



Framing Specifications



Certified to conform to ANSI Z124.1 and ASTM E-162 Flame Spread Rating 200 or less and is under a program of factory

Manufactured by Frontline
 10/21/21