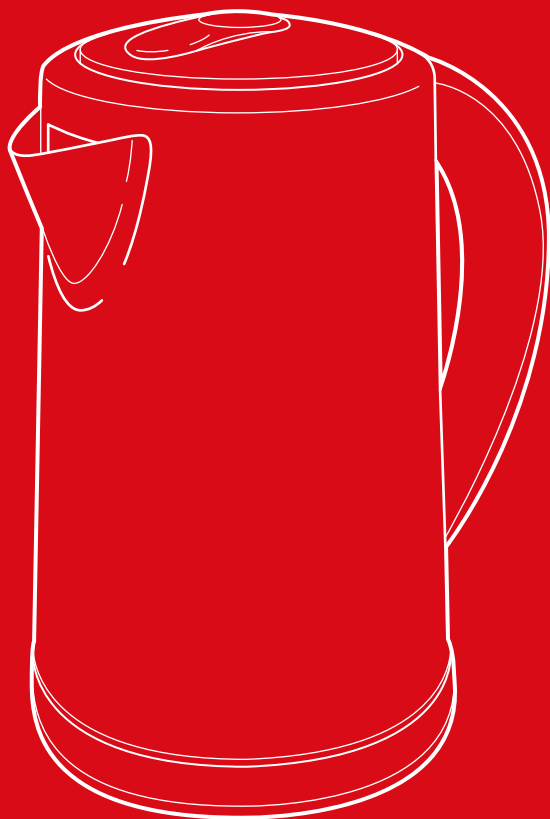




bestchoiceproducts



INSTRUCTION MANUAL

Electric Kettle
with Temperature Control



bestchoiceproducts

As shoppers, we're always trying to find the perfect balance between quality & value. At BCP, we believe we've achieved that. Our diverse catalog of everyday essentials is tailored especially to our customers & guaranteed to hit that sweet spot of high quality & low price.

— Always. —

! NOTICE

Please retain these instructions for future reference.

- Do not allow children to operate this appliance. Keep appliance out of reach of children.
- Close supervision is necessary when appliance is used near children.
- This item is intended for indoor, household use only.
- Place appliance on a stable, heat-resistant surface.
- Unplug appliance if it is left unattended and before assembly, disassembly, or cleaning.
- Ensure that your voltage is consistent with specifications.
- This appliance is not intended for use by persons (including children) with reduced physical, sensory or mental capabilities, or lack of experience and knowledge, unless they have been given supervision or instruction concerning use of the appliance by a person responsible for their safety.
- If any parts are missing, broken, damaged, or worn, stop using this product until repairs are made and/or factory replacement parts are installed.
- Do not use this item in a way inconsistent with the manufacturer's instructions as this could void the product warranty.

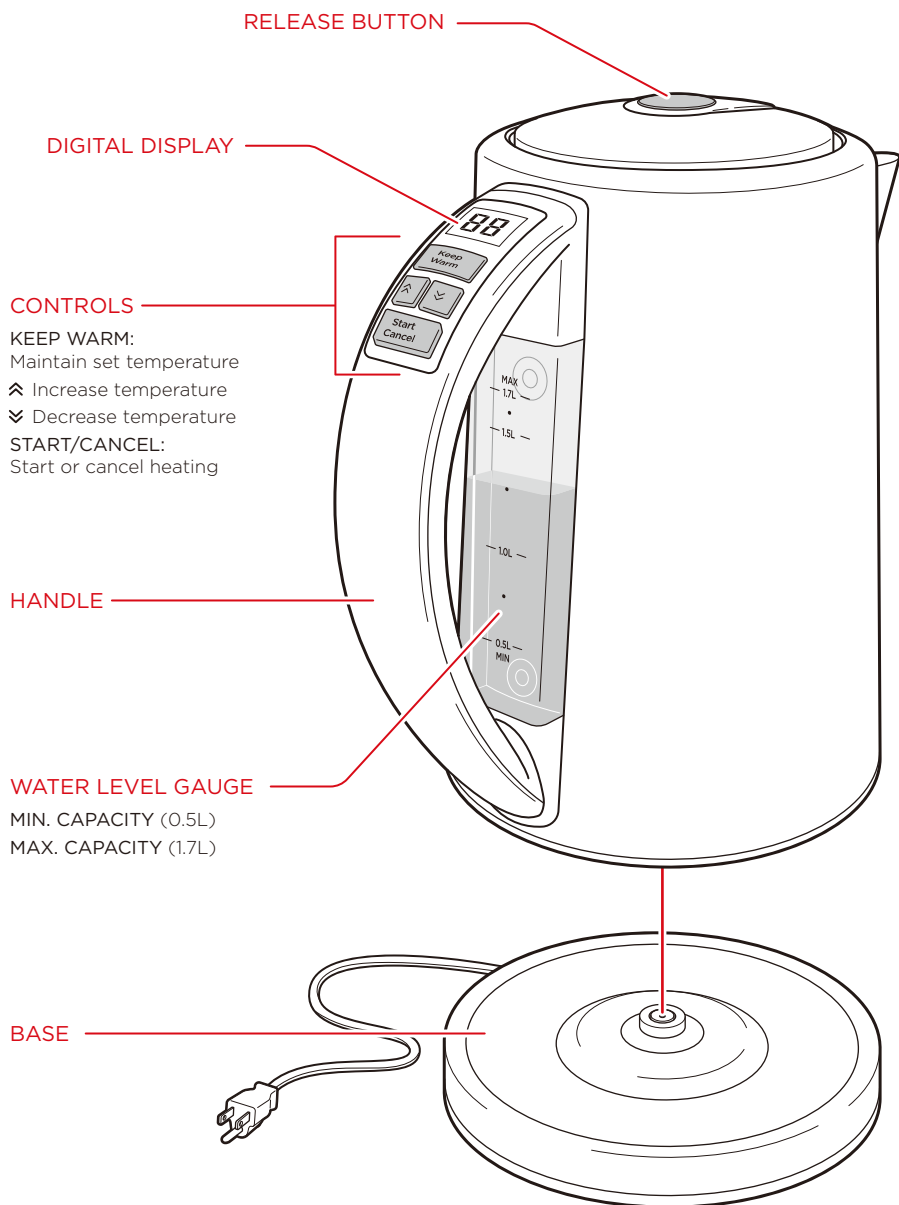
! WARNING

- Do not leave appliance unattended.
- Do not move appliance while it is plugged in or operating.
- Keep appliance away from direct sunlight and other sources of heat (stove, heater, etc.).
- Do not place in a heated oven.
- Do not touch hot surfaces with bare hands; use handles or knobs.
- Do not run power cord over sharp edges/corners or a hot surface.
- Do not pull or carry appliance by the power cord.
- Do not immerse or soak appliance in water or any other liquid.
- Do not spill water on the electrical components or connectors.
- Do not touch the plug or operate appliance with wet hands.
- Do not unplug the appliance by pulling on the power cord. Always grasp the plug firmly and pull straight out from the outlet.
- Do not use if the plug, power cord, or any components are damaged.
- Do not use any accessory or fitting other than original accessories and fittings.
- Always turn off appliance before removing plug from wall outlet.

SPECIFICATIONS

Voltage	120V, 60Hz
Rated Power	1500 watts
Min. Capacity	0.5 liters
Max Capacity	1.7 liters

DIAGRAM



SETTING UP THE APPLIANCE

1. Remove all packaging. Inspect appliance to make sure it is in good condition.
2. Place on a stable, heat-resistant surface.
3. Arrange appliance so it is at least 12 inches away from other kitchen appliances.

BEFORE FIRST USE

1. Fill kettle to max capacity.
2. Press **Start** to boil water.
3. Pour out water and rinse kettle.
4. Repeat to thoroughly clean kettle.

OPERATING INSTRUCTIONS

1. Fill kettle with desired amount of water. Close the lid.
 - Water level must be between 0.5 and 1.7 liters.
2. Place kettle on base and plug base into a wall outlet. Press **Start** to turn on.
3. Press **Start** again to boil water.
 - To heat to a certain temperature, set desired temperature and press Start to heat.
 - Kettle will turn off automatically when water reaches desired temperature.

KEEP WARM FUNCTION

Use the keep warm function to maintain or set water temperature.

1. Press **Keep Warm** button and set temperature.
2. Press **Start** to begin keep warm function.
3. To turn off, press **Keep Warm** button again or press **Cancel**.
 - Keep warm function automatically turns off after 2 hours.

USAGE TIPS

- Do not operate without water in kettle.
- Do not fill kettle beyond max capacity.
- Be careful of scalding; do not open lid while appliance is operating.
- Kettle turns off automatically after reaching desired temperature.
- After boiling water, let kettle cool before turning on again.
- Overheating protection will activate if kettle is switched on without water. Let kettle cool for 15 minutes before restarting.

CLEANING AND STORAGE

NOTE: Do not immerse or soak appliance in water or any other liquid.

- Unplug and let appliance cool before cleaning or storage.
- Appliance is not dishwasher safe.
- Remove lime scale from the interior by doing the following:
 - Fill the kettle with 1 liter of cold water and lemon juice.
 - Boil the mixture and allow it to stand for 15 minutes. Discard water mixture.
 - Repeat several times.
- Wipe exterior of the unit with a damp cloth. If necessary, use a small amount of mild detergent and a sponge.
- Do not clean with steel wool, abrasive detergents, or corrosive liquids like gasoline or acetone.
- Place appliance in a cool, well-ventilated place to dry.
- Store in a cool, dry place away from direct sunlight.

DESCALING

Every 2 to 3 months, descale the appliance to remove mineral deposits.

1. Fill kettle to max capacity with a descaling mixture.
 - Use either a 4:1 ratio of water to household descaler or a 1:1 ratio of water to white vinegar.
2. Allow kettle to stand for 1 hour.
3. Boil the mixture and discard. Rinse kettle with cold water.
4. Repeat 1 to 3 times.
5. Boil with clean water to remove the smell of vinegar or descaler.

Earn points while you shop. Join today!

bestchoiceproducts **rewards**

Join | Earn | Redeem

Give your friends 15% off their first order! For each successful referral you'll receive 100 points.

bestchoiceproducts.com



HELP CENTER



Question about your product? We're here to help. Visit us at:

help.bestchoiceproducts.com



Chat Support



Product Inquiry



Orders FAQ



Product Assembly



Returns & Refunds

PRODUCT WARRANTY INFORMATION

All items can be returned for any reason within 60 days of the receipt and will receive a full refund as long as the item is returned in its original product packaging and all accessories from its original shipment are included. All returned items will receive a full refund back to the original payment method. All returned items will not be charged a re-stocking fee.

All returned items require an RA (Return Authorization) number, which can only be provided by a Best Choice Products Customer Service Representative when the return request is submitted. Items received without an RA may not be accepted or may increase your return processing time. Once an item has been received by Best Choice Products, refunds or replacements will be processed within 5 business days.

All returns must be shipped back to the Best Choice Products Return Center at the customer's expense. If the reason for return is a result of an error by Best Choice Products then Best Choice Products will provide a pre-paid shipping label via email. Boxes for return shipping will not be provided by Best Choice Products, and is the customer's responsibility to either use the original shipping boxes or purchase new boxes.

Pictures may be required for some returns to ensure an item is not damaged prior to its return. Items returned are not considered undamaged until they are received by Best Choice Products and verified as such. All damages to items are the customer's responsibility until the item has been received by and acknowledge by Best Choice Products as undamaged.



WARNING

Manufacturer and seller expressly disclaim any and all liability for personal injury, property damage or loss, whether direct, indirect, or incidental, resulting from the incorrect attachment, improper use, inadequate maintenance, or neglect of this product.