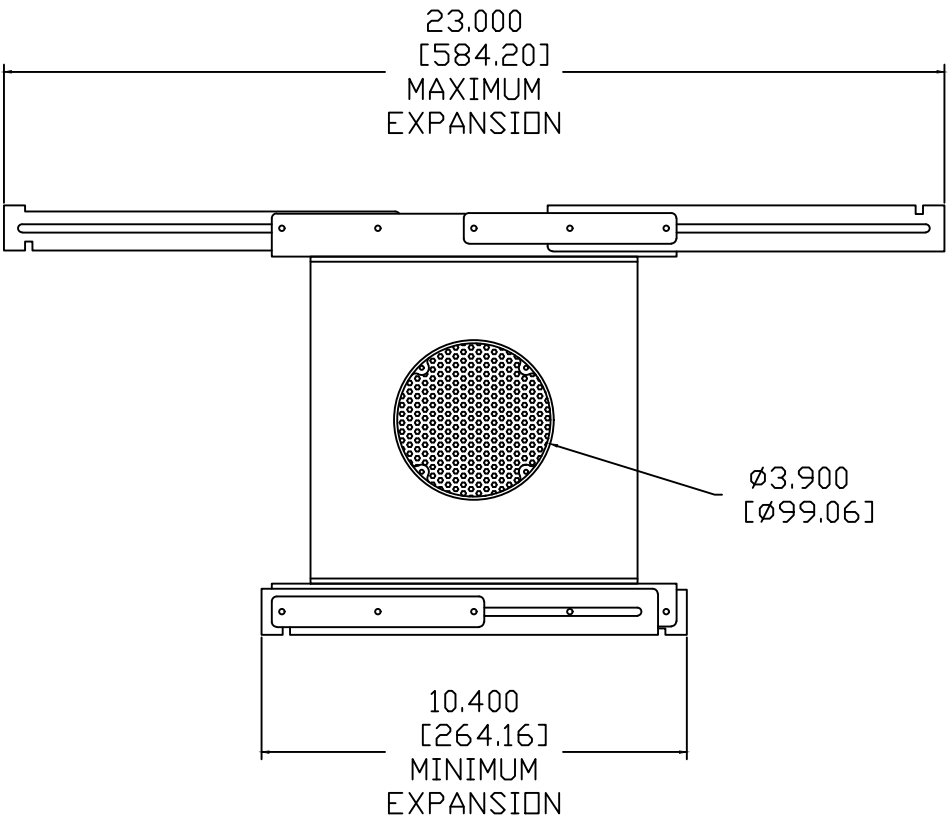
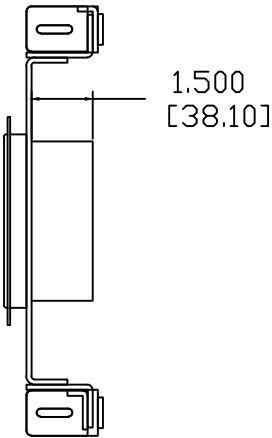
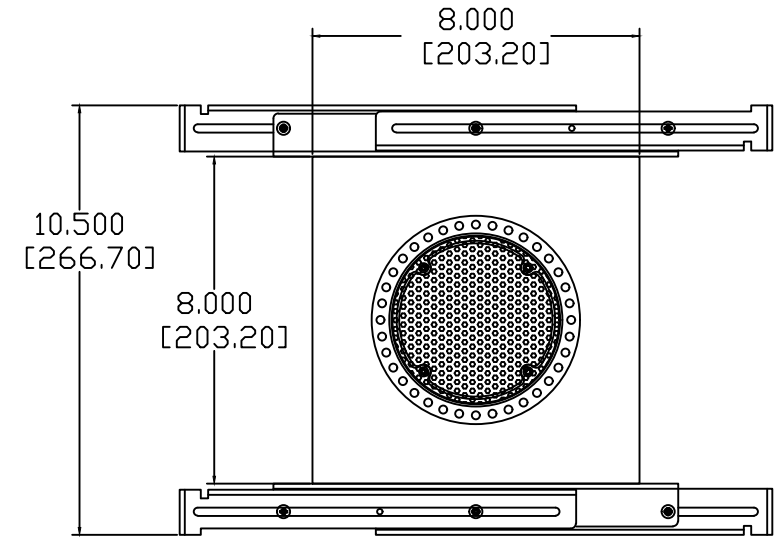
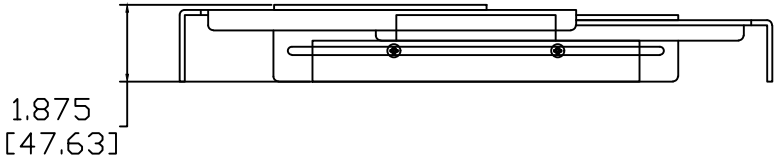
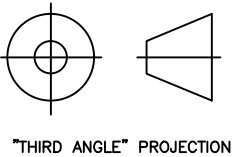


REVISIONS				
ECN	REV.	DESCRIPTION	DATE	APPROVED
	A	RELEASE FOR PRODUCTION	10-04-11	
15001	B	PORT OD REDUCED TO 3.900"	03-13-15	
21008	C	REDESIGNED WITH 8" X 8" FOOTPRINT	02-11-21	



NOTES:

- 1: MATERIAL – 0.125" THICK 5052 ALUMINUM  
UNLESS OTHERWISE SPECIFIED
- 2: FINISH – STUDIO BLACK POWDER COAT  
UNLESS OTHERWISE SPECIFIED
- 3: DESIGNED TO BE USED WITH 4" POWER PIPE HOSE
- 4: DESIGNED TO BE USED WITH SAPP TRIM KITS (ORDERED SEPARATELY)
- 5: DESIGNED TO BE USED WITH 63SA-7HO BRACKET (160115-K206C)



"THIRD ANGLE" PROJECTION

PROPRIETARY INFORMATION		JAMES LOUDSPEAKER	
THE DESIGNS, INFORMATION, AND DATA CONTAINED HEREIN ARE PROPRIETARY AND ARE SUBMITTED IN CONFIDENCE, AND SHALL NOT BE DISCLOSED, USED OR DUPLICATED IN WHOLE OR IN PART, FOR ANY PURPOSES WHATSOEVER, WITHOUT THE PRIOR WRITTEN PERMISSION OF JAMES LOUDSPEAKER LLC, 2185 PARK PL, MINDEN, NV 89423. THIS LEGEND SHALL BE MARKED ON ANY REPRODUCTIONS HEREOF IN WHOLE OR IN PART. RECEIPT OF THIS DOCUMENT SHALL BE DEEMED TO BE AN ACCEPTANCE OF THE CONDITIONS SPECIFIED HEREIN.		TK4-PP-SA	
		EXTERNAL DIMENSIONS	
		P/N: -	
		DWR #: 111004-A01	
		REVISED BY: S. LOESCH	
		DRAWN BY: M. PARK	
		DATE: 10-04-11	
		APPROVED:	
		DRAFTING APPROVED:	
		SCALE:	
		TOLERANCES: ANG: ± = .5° FRACT. ± = 1/32	
		DECIMALS: .XX ± = .01 .XXX ± = .005	
		REVISION: C	
		SHEET 1 OF 3	