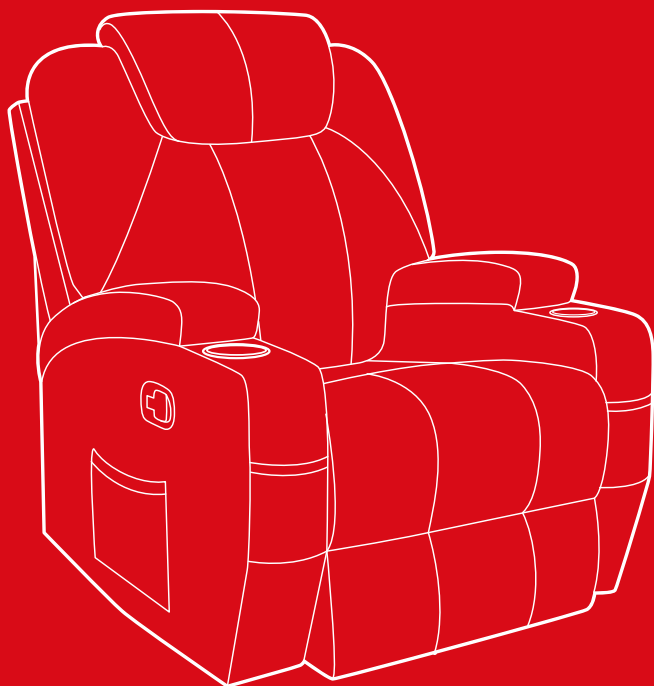




bestchoiceproducts



INSTRUCTION MANUAL

Massage Chair Recliner



bestchoiceproducts

As shoppers, we're always trying to find the perfect balance between quality & value. At BCP, we believe we've achieved that. Our diverse catalog of everyday essentials is tailored especially to our customers & guaranteed to hit that sweet spot of high quality & low price.

— Always. —

! NOTICE

- Firmly secure all parts before use.
- Reconfirm that all parts are secure every 90 days.
- Do not use or store this item or its parts in the proximity of open flame or flammable/combustible chemicals.
- Do not expose this chair or its electrical parts to water.
- If any parts are missing, broken, damaged, or worn, stop using this product until repairs are made and/or factory replacement parts are installed.
- Do not use this item in a way inconsistent with the manufacturer's instructions as this could void the product warranty.
- Do not exceed 250 lbs. when using this product. This chair is not designed for multiple people to sit at once.
- Do not let small children or pets near during assembly.



250 LBS
CAPACITY



2 PERSON
ASSEMBLY

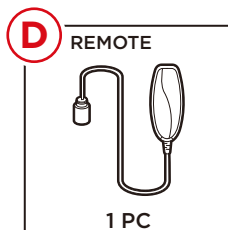
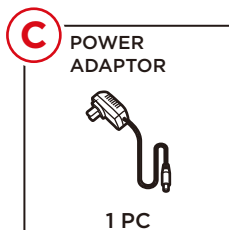
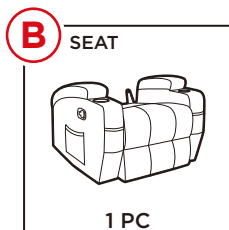
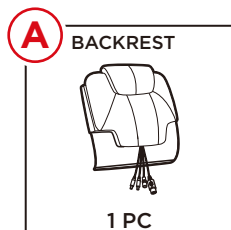


UP TO 30 MIN.
ASSEMBLY

! WARNING

- This massage chair features electrical components. Do not expose this massage chair to high temperatures or humidity.
- Always unplug this appliance when not in use.
- Only plug this product into a grounded outlet. Do not plug this product in with any electrical adaptor besides the included plug. Do not modify the plug in any way.
- Unattended children and individuals with impairments that may prevent them from safely operating this device should not use this chair.
- Do not stand on any part of the chair.
- Do not use this chair outdoors.
- Do not use this chair if massage mechanism is exposed.
- Do not use this chair if your physician or healthcare professional has advised against massage chair use.
- Do not use this chair if you are inebriated, have a pacemaker, heart condition, skin condition or injury, are pregnant, plan on becoming pregnant, have just given birth, have a disease like diabetes that disrupts sensory feedback, have osteoporosis, chronic pain or injuries, have a fever, or have other medical issues that may impede your ability to safely use this chair.
- Do not use this chair for sleeping, or if you have a history of narcolepsy.
- If you experience any pain, illness, or discomfort during use, discontinue using this chair and consult with a physician.
- Do not use massage chair at the same time as other medical or therapeutic devices, such as blanket warmer or another massage device.
- Only operate this device on a stable, flat surface.
- Do not operate massage function or heating function for long periods of time.
- Do not pull out the plug to turn off this massage chair. Turn off all functions before unplugging the chair.

PARTS



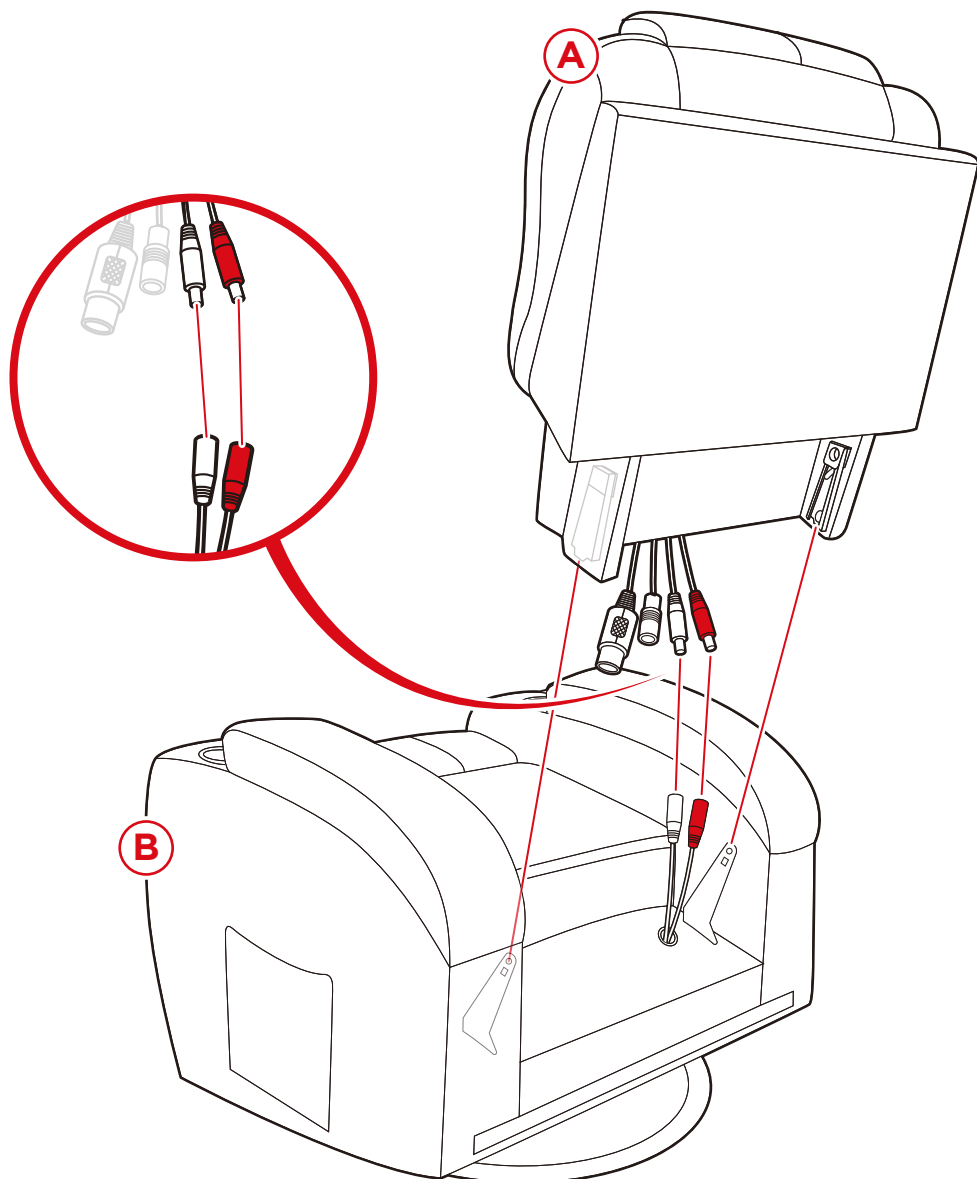
PRODUCT ASSEMBLY

1

Insert part A backrest into part B seat, ensuring the two metal inserts on the seat slide into the clips on the backrest with a click.

Join the wires from the backrest to the corresponding wires on the seat.

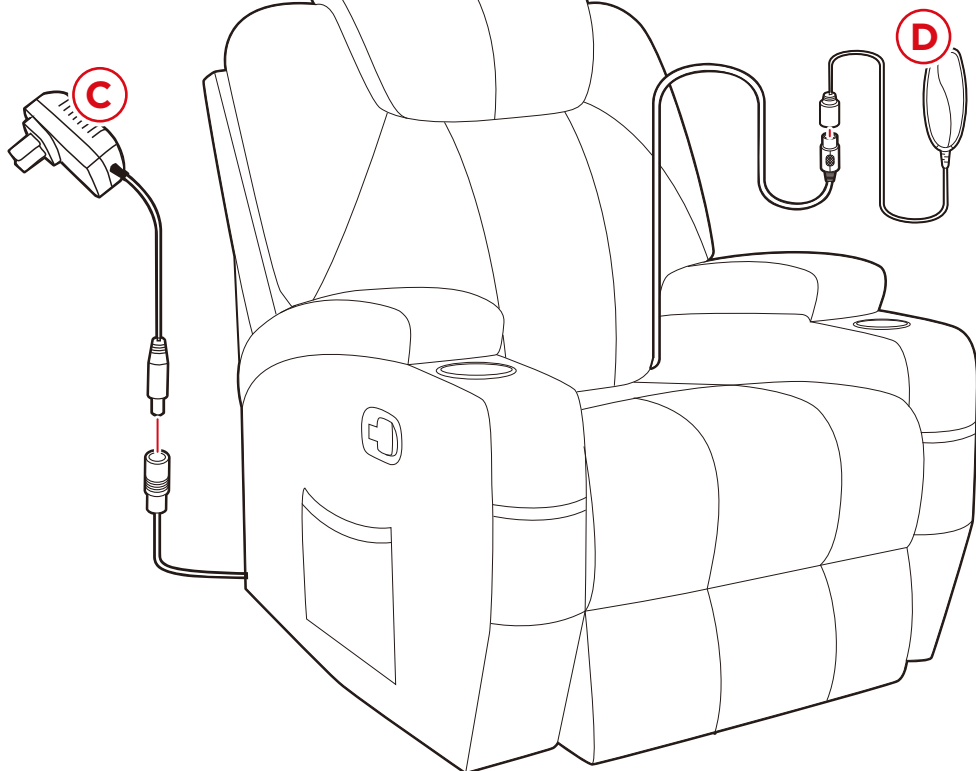
Make sure that the corresponding sizes and colors match.



PRODUCT ASSEMBLY

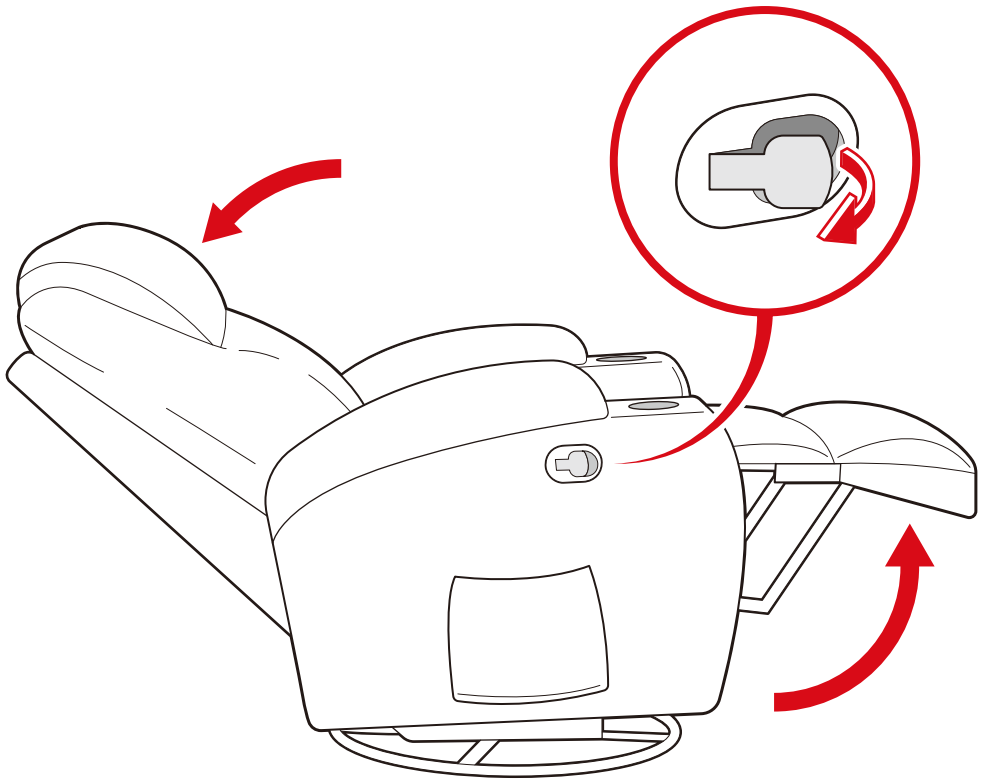
2

Join the part C power adaptor and part D remote to the appropriate wires.



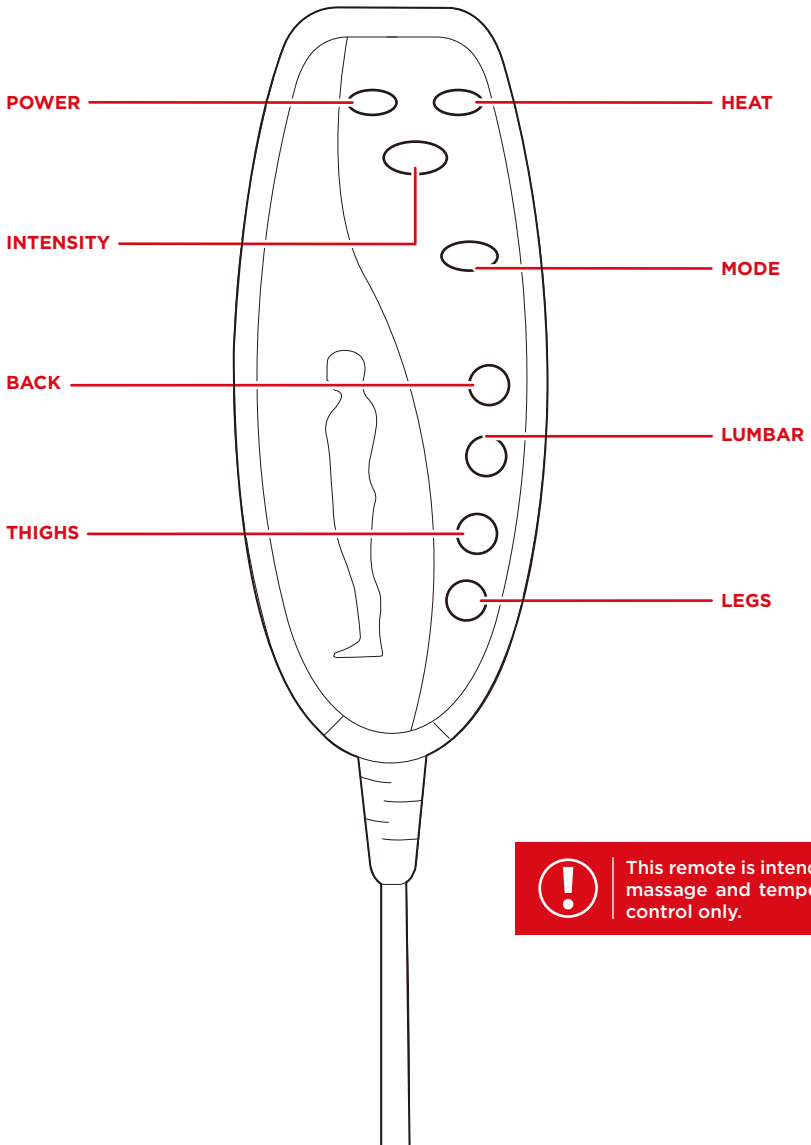
RECLINER OPERATION

1. Sit down in the seat and locate the release latch on the right side of the chair.
2. Pull the latch to activate the reclining backrest and elevate the footrest.
3. Use your bodyweight to push the backrest backward and achieve a deeper resting angle.
4. To deactivate this function, firmly push down on the footrest until it locks back in place.



REMOTE DIAGRAM

- **INTENSITY:** Switch between a high and low intensity massage.
- **MODE:** Select different types of massages, such as PULSE, PRESS, or WAVE. This also controls the AUTO and NORMAL functions. Press this button to cycle through options.
- **BACK, LUMBAR, THIGHS, and LEGS:** Target massages to specific areas or turn off massage functions for specific areas.



This remote is intended for massage and temperature control only.



HELP CENTER



Question about your product? We're here to help. Visit us at:

help.bestchoiceproducts.com



Chat Support



Product Inquiry



Orders FAQ



Product Assembly



Returns & Refunds

PRODUCT WARRANTY INFORMATION

All items can be returned for any reason within 60 days of the receipt and will receive a full refund as long as the item is returned in its original product packaging and all accessories from its original shipment are included. All returned items will receive a full refund back to the original payment method. All returned items will not be charged a re-stocking fee.

All returned items require an RA (Return Authorization) number, which can only be provided by a Best Choice Products Customer Service Representative when the return request is submitted. Items received without an RA may not be accepted or may increase your return processing time. Once an item has been received by Best Choice Products, refunds or replacements will be processed within 5 business days.

All returns must be shipped back to the Best Choice Products Return Center at the customer's expense. If the reason for return is a result of an error by Best Choice Products then Best Choice Products will provide a pre-paid shipping label via email. Boxes for return shipping will not be provided by Best Choice Products, and is the customer's responsibility to either use the original shipping boxes or purchase new boxes.

Pictures may be required for some returns to ensure an item is not damaged prior to its return. Items returned are not considered undamaged until they are received by Best Choice Products and verified as such. All damages to items are the customer's responsibility until the item has been received by and acknowledge by Best Choice Products as undamaged.

WARNING

Manufacturer and seller expressly disclaim any and all liability for personal injury, property damage or loss, whether direct, indirect, or incidental, resulting from the incorrect attachment, improper use, inadequate maintenance, unapproved modification, or neglect of this product.