

# JUNE BEETLE



see me up close

*"I found a little beetle, so that Beetle was his name."*

- AAMilne



### **Where do I live?** ◀◀

June beetles live in temperate grasslands, forests, and lawns. They spend winter underground as grubs and emerge in late spring as adults.

### **What do I eat?** ▶▶

June beetle grubs eat grass roots. Adults feed on nectar, pollen, fruit, and other small insects.



### **Who eats me?** ◀◀

Bats, birds, lizards, frogs, and toads, eat June beetles.

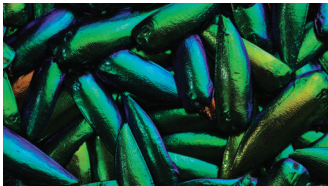
### **How old can I get?**

A June beetle's life cycle takes about a year.



### **Fun Fact**

Wing casings of some beetles were used as beads to decorate high class garments in Victorian times.



# ROLY POLY



*"Holy Moly, Roly Poly!"*

*- A children's book by Steve Durman*



### **Where do I live?** ◀◀

Roly polies prefer damp locations, as their gills need to be moist for them to breathe. They are commonly found under rotting logs or leaves.

### **What do I eat?**

Roly polies like to eat decaying plant matter, like leaves and grass. They also enjoy raw fruits and vegetables.

### **Who eats me?** ▶▶

Roly poly predators include spiders, centipedes, birds, frogs, and ants.



### **How old can I get?** ◀◀

The average lifespan of a roly poly is 2 to 5 years. They molt up to a dozen times in their lifetime.



### **Fun Fact**

A virus called an "iridovirus" affects roly polies, turning them purple or bright blue.



# SPIDER



*"When spider webs unite,  
they can tie up a lion."*

*- Ethiopian Proverb*



### **Where do I live?** ◀◀

Spiders live in nearly every habitat. There are fishing spiders that can even swim underwater.

### **What do I eat?** ▶▶

Most spiders eat small insects, though some scavenge or eat plants. Some spiders are large enough to eat mice and birds.



### **Who eats me?** ▶▶

Amphibians, reptiles, birds, bats, other spiders, scorpions, centipedes and wasps eat spiders. Monkeys eat spiders as a snack.



### **How old can I get?** ◀◀

Many common house spiders live around 1 year. Some species of tarantula may live for more than 20 years.



### **Fun Fact**

Hummingbirds line their nests with spiderwebs.



# CRICKET



*"When the cricket's song is the only sound you hear, how peaceful the whole earth seems."*

*- Marty Rubin*



### **Where do I live? ◀◀**

Crickets are most commonly found in humid areas with lots of plants and hide under logs or leaf litter. Some crickets live underground.

### **What do I eat? ▶▶**

Crickets have varied diets. Some eat plants, while some may also eat aphids and insect larvae.



### **Who eats me? ◀◀**

Frogs and toads, small snakes, rats, bats, birds, and a number of other insects eat crickets.

### **How old can I get?**

Crickets generally live a few months or up to a year.



### **Fun Fact**

Crickets chirp by rubbing body parts together.





# SCORPION



*"O, full of scorpions is my mind!"*

*- William Shakespeare*



### **Where do I live?** ◀◀

Scorpions are most common in deserts and woodlands.

### **What do I eat?** ▶▶

Scorpions eat insects, small invertebrates, roly polys or snails.



### **Who eats me?** ◀◀

Owls, lizards, snakes, frogs, toads, and some mammals eat scorpions.

### **How old can I get?** ▶▶

Scorpions typically live around 3 to 5 years, though some in captivity have lived past 20 years old.



### **Fun Fact**

Scorpions fluoresce under UV light.

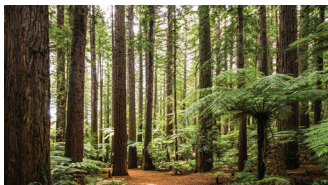


# LADY BEETLE



*"Ladybugs all dressed  
in red strolling through  
the flowerbed. If I were  
tiny just like you I'd creep  
among the flowers too!"*

*- Maria Fleming*

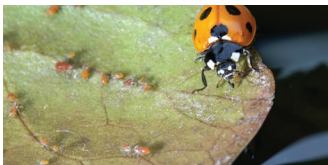


### **Where do I live?** ◀◀

Lady Beetles tend to live in most environments though they prefer grasslands and forests.

### **What do I eat?** ▶▶

Lady Beetles eat aphids and mites. They can eat up to 5,000 tiny insects in a lifetime.



### **Who eats me?** ▶▶

Birds are Lady Beetles' main predators, though they are also eaten by frogs, dragonflies, wasps, and spiders.



### **How old can I get?** ◀◀

A Lady Beetle's life cycle is about a year.



### **Fun Fact**

Lady Beetles squirt bad-tasting, foul-smelling fluid when threatened.



# SILK MOTH



see me up close

*"I stood before a silk worm one day, and that night my heart said to me, 'I can do things like that, I can spin skies, I can be woven into love that can bring warmth to people.'"*

- Rumi



### **Where do I live? ◀◀**

There are 350 species of Silk Moths around the world.

### **What do I eat? ▶▶**

Caterpillars eat leaves. Moths drink nectar.

### **Who eats me?**

Silkworm caterpillars and moths are eaten by birds, frogs, lizards, and snakes.



### **How old can I get? ◀◀**

Silk Moths live for about 5 to 10 days.



### **Fun Fact**

Silk fiber is made from Domestic Silk Moth cocoons. This moth no longer occurs in the wild.



# BEE



see me up close

*"Where there are bees  
there are flowers, and  
wherever there are  
flowers there is new life  
and hope."*

*- Christy Lefteri*



### **Where do I live? ◀◀**

Bees live worldwide. Social bees live in colonies, while solitary bees live in burrows or holes.

### **What do I eat? ▶▶**

Bees feed on nectar for energy and pollen for protein and nutrients.

### **Who eats me?**

Hive bees are especially hunted by bears who eat the bees and their larvae as well as the honey.



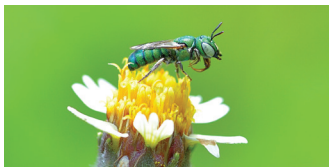
### **How old can I get? ◀◀**

Solitary bees tend to live around 1 year. Social bees live around 30 days, although a honey bee queen may live 1 to 2 years.



### **Fun Fact**

90% of bee species are solitary and do not live in hives.





# WASP



see me up close

*"Did he annoy me? Yes, he was like a wasp at a picnic."*

*- Gary Barlow*



### **Where do I live? ◀◀**

Some wasps live in burrows, while others build nests made of chewed up wood and plant material, often on the sides of buildings or in trees.

### **What do I eat? ▶▶**

Wasps eat nectar, insects, spiders, or dead animals, and also enjoy fruit. A queen may bring back nectar and small insects to her young as food.



### **Who eats me? ◀◀**

Wasp predators include dragonflies, centipedes, hoverflies, beetles, spiders, moths, praying mantis, and robber flies.

### **How old can I get?**

Solitary wasps tend to live one season.



### **Fun Fact**

Some wasps recognize faces of other wasps.

