

INSTALLATION, OPERATION & MAINTENANCE DATA SHEET

AN Series Rigid Conduit Nipples

FOR USE IN HAZARDOUS LOCATIONS, Ex db IIC Gb, Ex eb IIC Gb, Ex tb IIIC Db
 Service/Ambient Temperature: -50°C to + 70°C

DIRECTIONS FOR INSTALLATION

CAUTION: Before installing, make sure you are compliant with area classifications, failure to do so may result in bodily injury, death and property damage. Do not attempt installation until you are familiar with the following procedures. All installation must comply with the applicable Electrical Code.

Make sure that the circuit is De-energized before starting installation or maintenance.
 Verify that the installation is grounded. Failure to ground will create electrical shock hazards, which can cause serious injury and or death.

Important: Please read these instructions carefully before installing or maintaining this equipment. Good electrical practices should be followed at all times and this data should be used as a guide only.

WARNING: Do not attempt to install NPT threaded nipples into metric threaded openings.

Step 1

Ensure NPT thread type and size are compatible with enclosure thread.
 Where ingress protection of IP66 is required, the use of a suitable non-setting thread sealant is recommended.

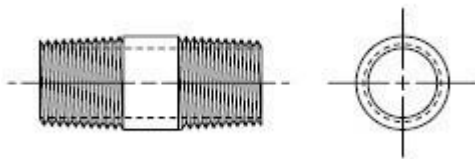
Step 2

Tighten nipple into the enclosure/equipment with a wrench located on the center of the nipple. The nipple should be hand tight plus one wrench turn per ANSI/ASME B1.20.1-1983.

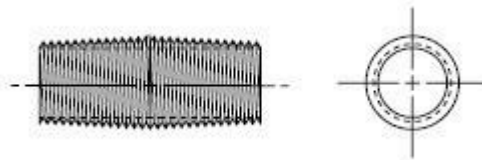
The number of NPT threads engaged must be a minimum of 5.

Notes:

1. If the enclosure is already in operation, it must be DISCONNECTED from the supplying circuit before beginning installation.
2. Nipples shall not be used for the direct inter-connection of enclosures.
3. Only one nipple is to be used with any single cable entry on the associated equipment.



AN-1B, AN-2B, AN-2D, AN-3B



AN-1, AN-2, AN-3, AN-4, AN-5,
 AN-6, AN-7, AN-8, AN-9, AN-10

CERTIFICATION DETAILS:

SIRA I3ATEX I196U

IECEX SIR I3.0073U

Ex db IIC Gb


Ex db IIC Gb

Ex eb IIC Gb

Ex eb IIC Gb

Ex tb IIIC Db

Ex tb IIIC Db

0518  II 2 GD

Service/Ambient Temperature: -50°C to + 70°C