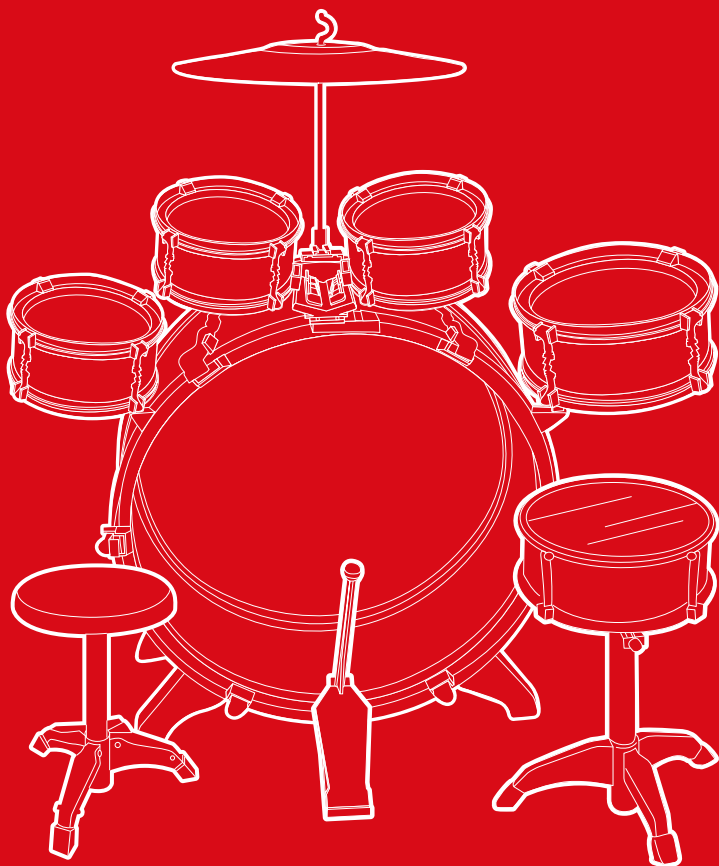




bestchoiceproducts



INSTRUCTION MANUAL

Kids Drum Set

! NOTICE

- Firmly secure all screws and knobs before use.
- Reconfirm that all screws and knobs are secure every 90 days.
- Product is intended for indoor use.
- This product is intended only for children 3 years of age or older.
- This product contains small parts for assembly. Keep small children and pets away during assembly.
- This product requires adult assembly, do not allow children to assemble this product unsupervised as this could lead to personal injury and property damage.



3 YEARS
OLD AND UP

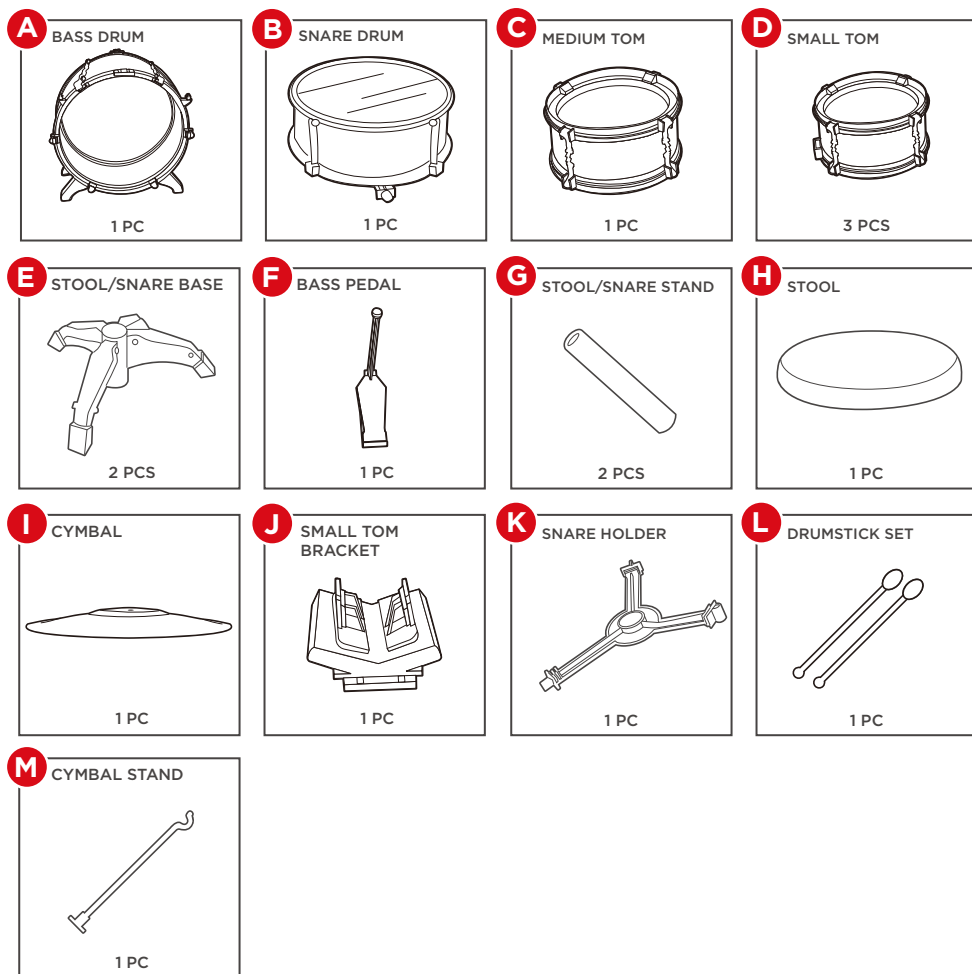


1 PERSON
ASSEMBLY



UP TO 20 MIN.
ASSEMBLY

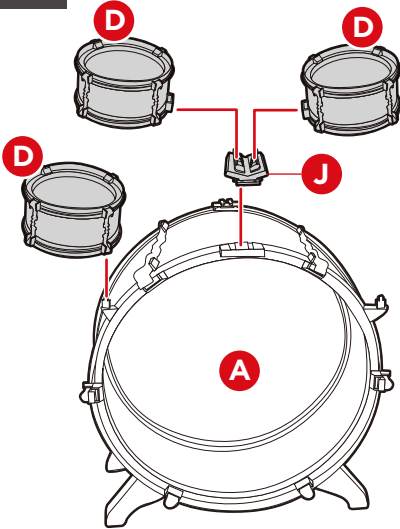
PARTS



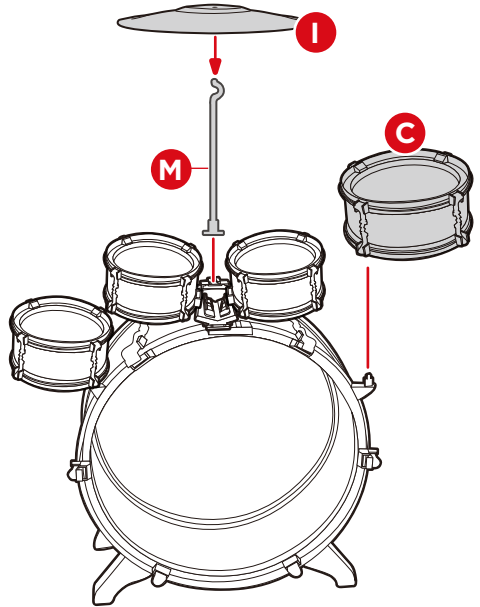
PRODUCT ASSEMBLY

Please retain these instructions for future reference.

1

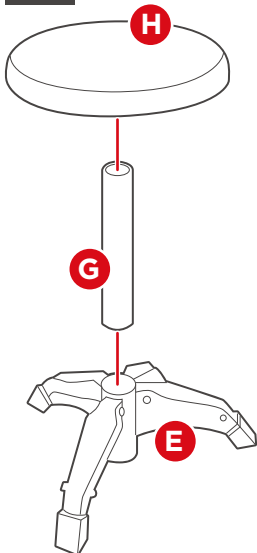


Slide the part J small tom bracket onto the part A bass drum. Slide two part D small toms onto the small tom bracket. Attach the final small tom to the left mount on the bass drum.



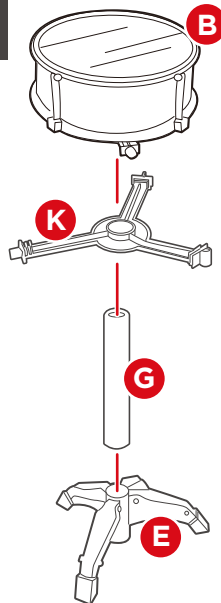
Attach the part C medium tom to the right mount on the bass drum. Slide the part M cymbal stand into the mount at the top of the bass drum. Slide the part I cymbal onto the cymbal stand.

2



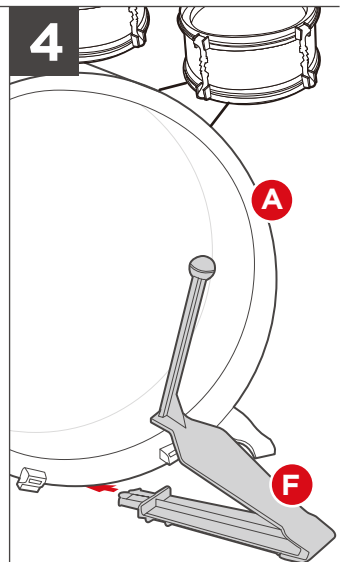
Assemble the stool.

3



Assemble the snare drum.

4



Insert the part F bass pedal into the mount at the bottom of the bass drum.



HELP CENTER



Question about your product? We're here to help. Visit us at:

help.bestchoiceproducts.com



Chat Support



Product Inquiry



Orders FAQ



Product Assembly



Returns & Refunds

PRODUCT WARRANTY INFORMATION

All items can be returned for any reason within 60 days of the receipt and will receive a full refund as long as the item is returned in its original product packaging and all accessories from its original shipment are included. All returned items will receive a full refund back to the original payment method. All returned items will not be charged a re-stocking fee.

All returned items require an RA (Return Authorization) number, which can only be provided by a Best Choice Products Customer Service Representative when the return request is submitted. Items received without an RA may not be accepted or may increase your return processing time. Once an item has been received by Best Choice Products, refunds or replacements will be processed within 5 business days.

All returns must be shipped back to the Best Choice Products Return Center at the customer's expense. If the reason for return is a result of an error by Best Choice Products then Best Choice Products will provide a pre-paid shipping label via email. Boxes for return shipping will not be provided by Best Choice Products, and is the customer's responsibility to either use the original shipping boxes or purchase new boxes.

Pictures may be required for some returns to ensure an item is not damaged prior to its return. Items returned are not considered undamaged until they are received by Best Choice Products and verified as such. All damages to items are the customer's responsibility until the item has been received by and acknowledge by Best Choice Products as undamaged.



WARNING

Manufacturer and seller expressly disclaim any and all liability for personal injury, property damage or loss, whether direct, indirect, or incidental, resulting from the incorrect attachment, improper use, inadequate maintenance, unapproved modification, or neglect of this product.