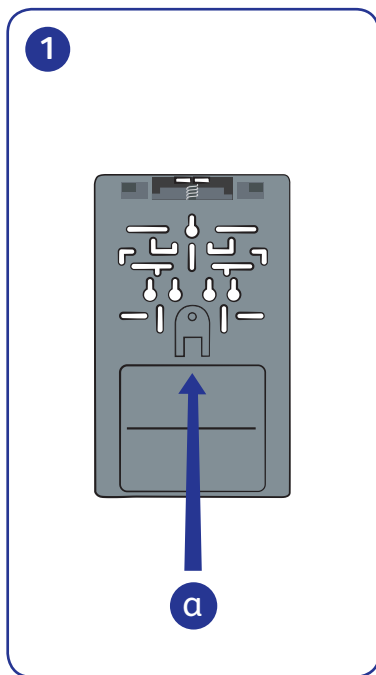




IntelliCare™ Manual dispenser How to change a bottle

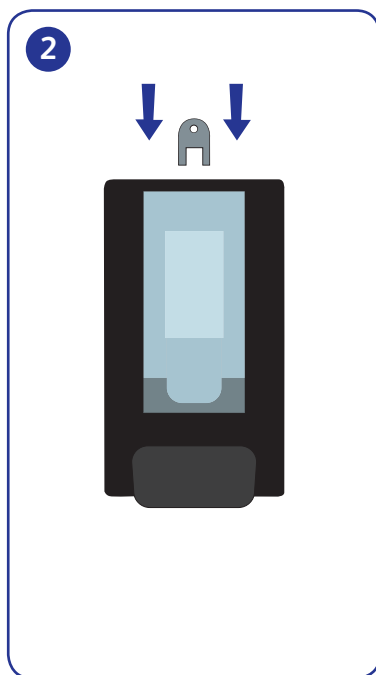


Key location

Remove cover key (a) from back of housing.

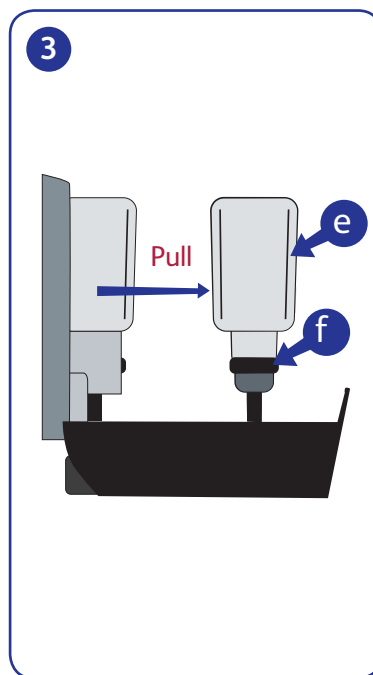
Important

For initial installation only



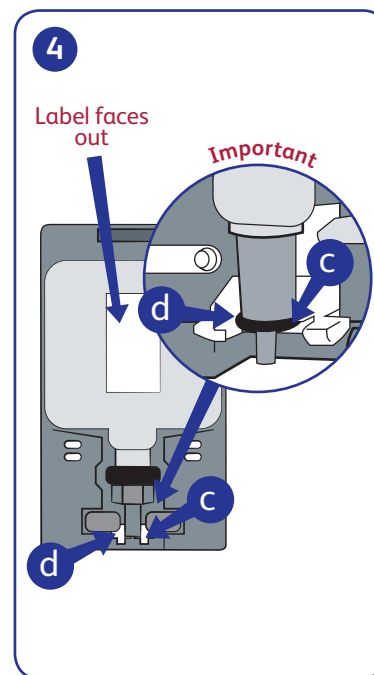
Opening cover

Insert key into holes on top of cover then pull cover forward.



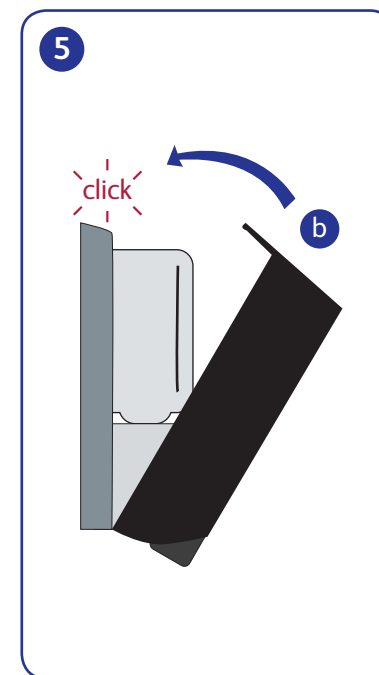
To remove refill

Pull the container (e) and the pump housing (f). Please recycle accordingly.



To insert refill

Push refill into place to ensure the FLANGE of the soap nozzle (c) is seated into the correct location (d) if not, the dispenser will not pump correctly.



Closing cover

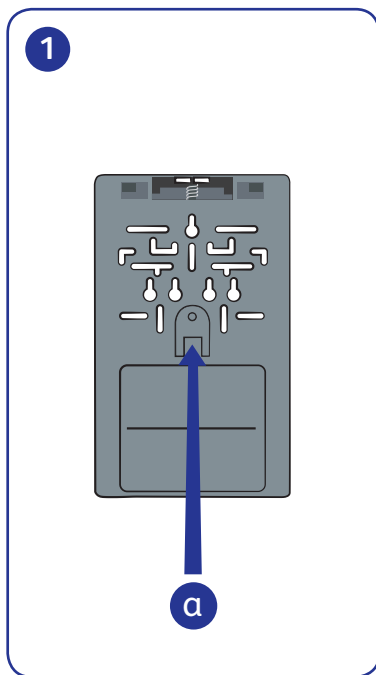
To close the cover, simply push the top of the cover closed to "CLICK" shut (b).

Check [diversey.com/intellicare](https://www.diversey.com/intellicare) for dispenser user guide





IntelliCare™ Hybrid dispenser How to change a bottle

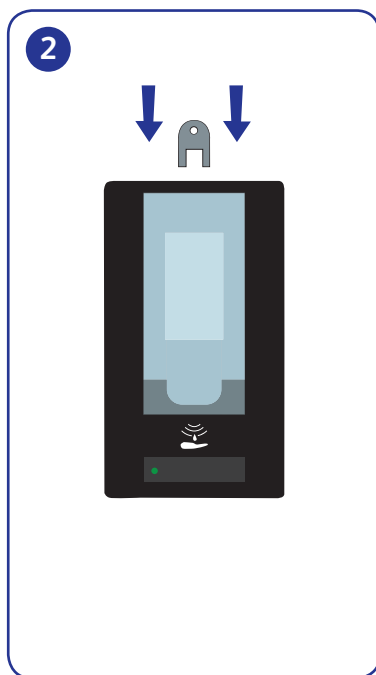


Key location

Remove cover key (a) from back of housing.

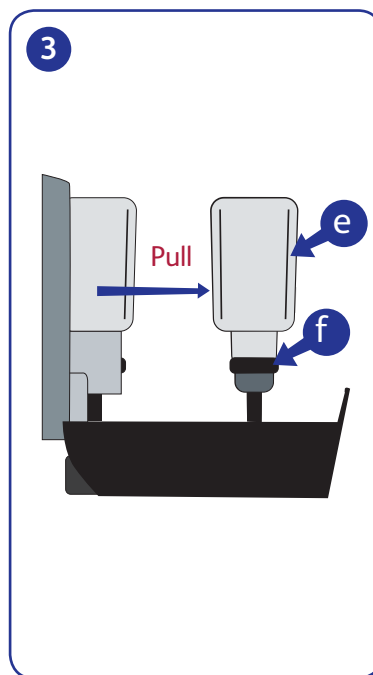
Important

For initial installation only



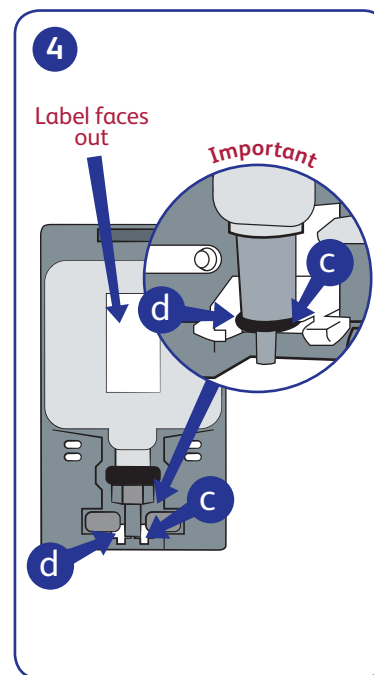
Opening cover

Insert key into holes on top of cover then pull cover forward.



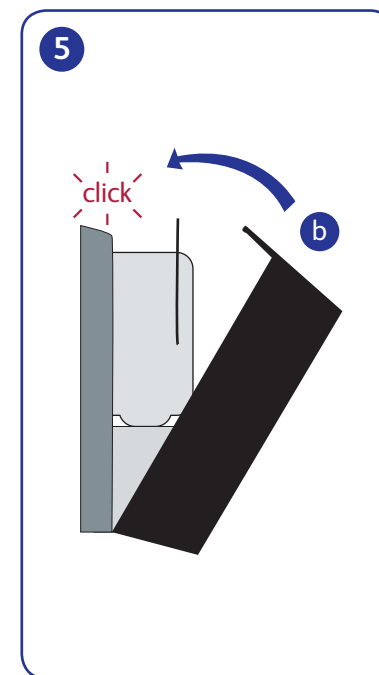
To remove refill

Pull the container (e) and the pump housing (f). Please recycle accordingly.



To insert refill

Push refill into place to ensure the **FLANGE** of the soap nozzle (c) is seated into the correct location (d) if not, the dispenser will not pump correctly.



Closing cover

To close the cover, simply push the top of the cover closed to "CLICK" shut (b).

Check [diversey.com/intellicare](https://www.diversey.com/intellicare) for further information

