

Battery Warnings & Safety

Warnings and Statements:

This product contains a CR Coin Cell Lithium Battery and meets the requirements of **16 CFR Part 1263**. For your safety and to ensure proper operation, please carefully read and understand the following warnings and statements.

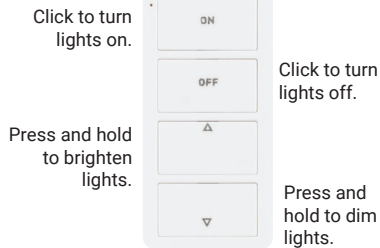
WARNING

- **INGESTION HAZARD:** This product contains a button cell or coin battery.
- **DEATH** or serious injury can occur if ingested.
- A swallowed button cell or coin battery can cause **Internal Chemical Burns** in as little as **2 hours**.
- **KEEP** new and used batteries **OUT OF REACH** of **CHILDREN**
- **Seek Immediate Medical Attention** if a battery is suspected to be swallowed or inserted inside any part of the body.

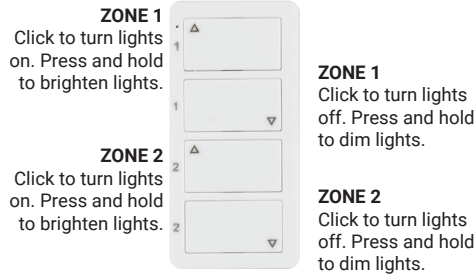


Use One, Two, or Four Zone Wireless Controllers with single-white and tunable-white lighting.

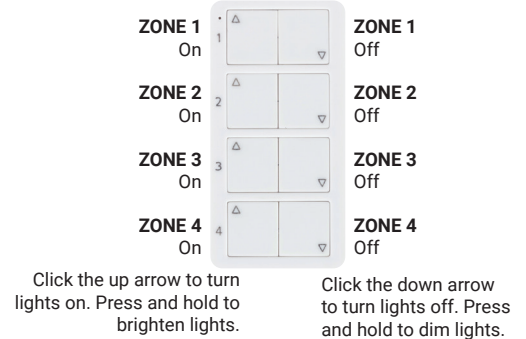
One Zone Controller
T-Q-1Z-WC-RF-WT



Two Zone Controller
T-Q-2Z-WC-RF-WT



Four Zone Controller
T-Q-4Z-WC-RF-WT



96-Watt Receiver
Press Learning button

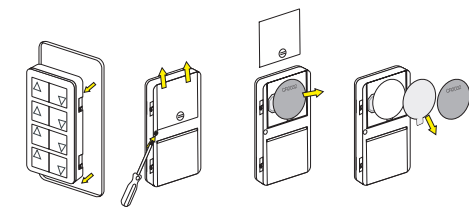


240-Watt Receiver
Press Learning button

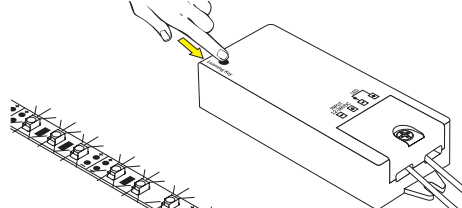


Pairing Wireless Controller to a standard receiver (T-Q-WR96 or T-Q-WR240)

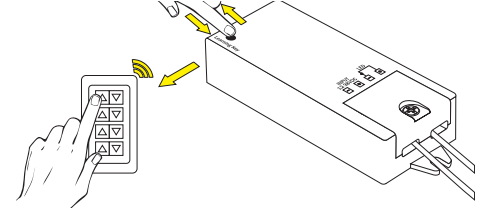
Pairing Instructions to one zone (T-Q-WR96 shown in illustrations).



1. Remove Controller from back plate. Use included screw driver to remove screw, slide battery compartment open, remove battery, and discard clear plastic tab. Reinsert battery, replace cover, and screw down.



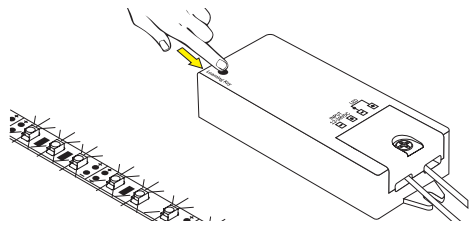
2. If setting the receiver up for the first time, clear the memory by pressing and holding the "Learning Key" button until the lights blink.



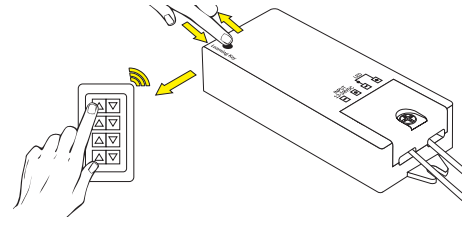
3. Very quickly, click and release the "Learning Key" button and, within 5 seconds, quickly click and release one of the "Up arrow" buttons on the Controller. When lights blink once, Controller and Receiver are paired.

NOTE: when pairing additional controllers to the same receiver, DO NOT clear the memory.

Pairing Instructions for additional zones



1. When pairing additional zones to the same Controller, clear the memory on the new Receiver for the next zone by pressing and holding the "Learning Key" button until the lights blink.



2. Very quickly, click and release the "Learning Key" button and, within 5 seconds, quickly click and release one of the "Up arrow" buttons on the Controller. When lights blink once, Controller and Receiver are paired. Repeat process until zones are paired as desired.

Follow instructions included in receiver or lighting to properly hookup lighting system.

Pairing Instructions – if pairing to a Smart Home Hub, visit www.Vimeo.com/Channels/WAVSmartControl

Note: Smart Home App must be used to turn Kelvin temperature to warmest white to ensure full brightness if using single-white lighting.



Scan the QR code to view a list of compatible smart home devices

WAV Smart Receiver Press Prog. button



T-TWAV-WR-120

12-Volt WAV Smart Receiver/60-Watt Power Supply Press Prog. button



T-TWAV-60W-PSR

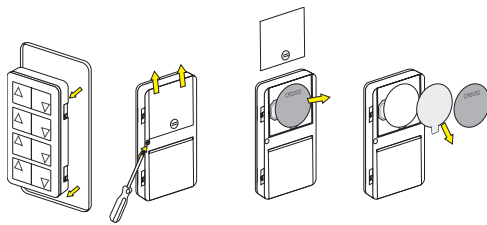
24-Volt WAV Smart Receiver/96-Watt Power Supply Press Prog. button



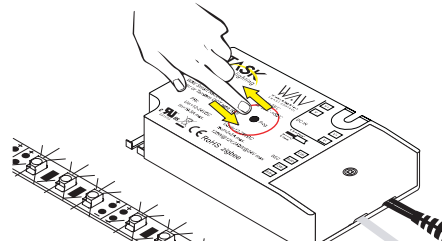
T-TWAV24V96WPSR

Pairing Wireless Controller to smart-home compatible receiver (T-TWAV-WR-120, T-TWAV60W-PSR, or T-TWAV24V96WPSR)

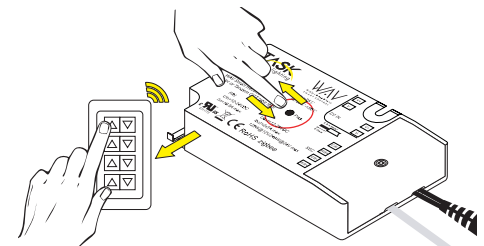
Pairing Instructions to one zone (T-TWAV-WR-120 shown in illustrations).



1. Remove Controller from back plate. Use included screw driver to remove screw, slide battery compartment open, remove battery, and discard clear plastic tab. Reinsert battery, replace cover, and screw down.



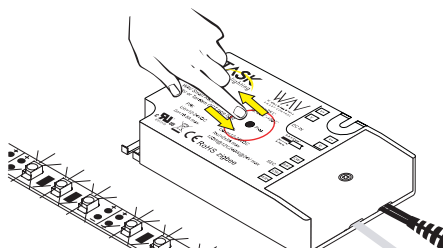
2. If setting the receiver up for the first time, clear the memory by pressing and holding the "Prog." button until the lights blink.



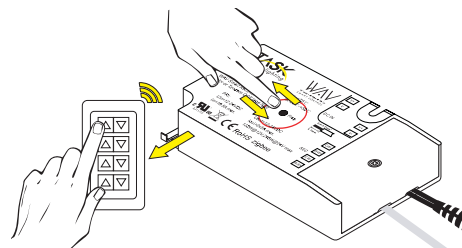
3. Very quickly, click and release the "Prog." button and, within 5 seconds, quickly click and release one of the "Up arrow" buttons on the Controller. When lights blink once, Controller and Receiver are paired.

NOTE: when pairing additional controllers to the same receiver, DO NOT clear the memory.

Pairing Instructions for additional zones



1. When pairing additional zones to the same Controller, clear the memory on the new Receiver for the next zone by pressing and holding the "Prog." button until the lights blink.



2. Very quickly, click and release the "Prog." button and, within 5 seconds, quickly click and release one of the "Up arrow" buttons on the Controller. When lights blink once, Controller and Receiver are paired. Repeat process until zones are paired as desired.

Follow instructions included in receiver or lighting to properly hookup lighting system.