

8 7 6 5 4 3 2 1

F

E

D

C

B

A

F

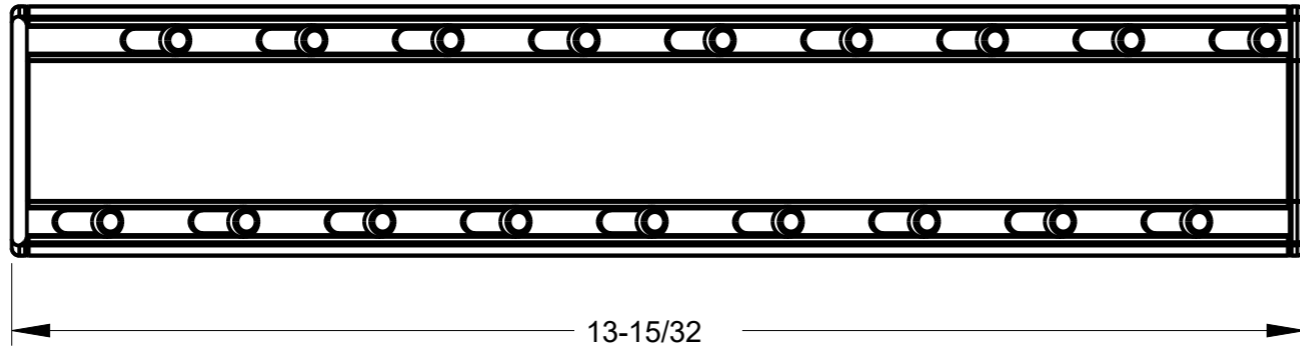
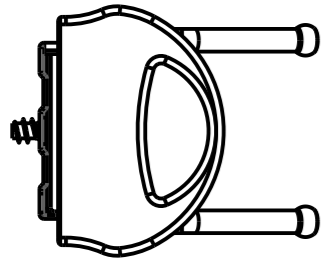
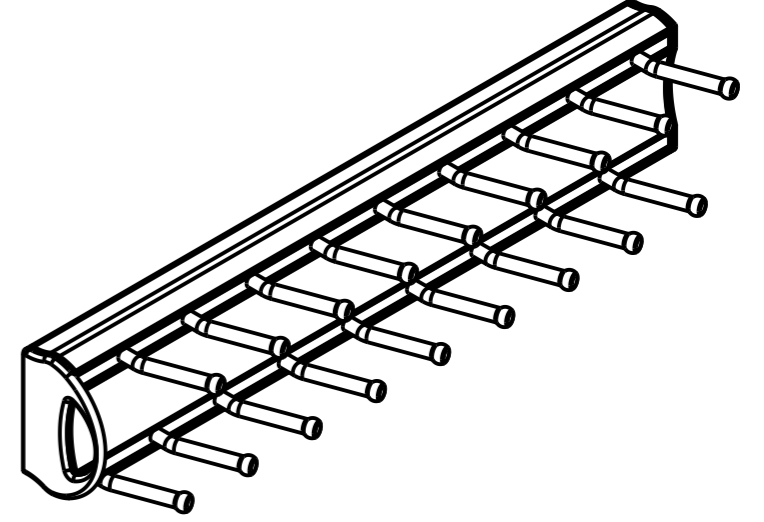
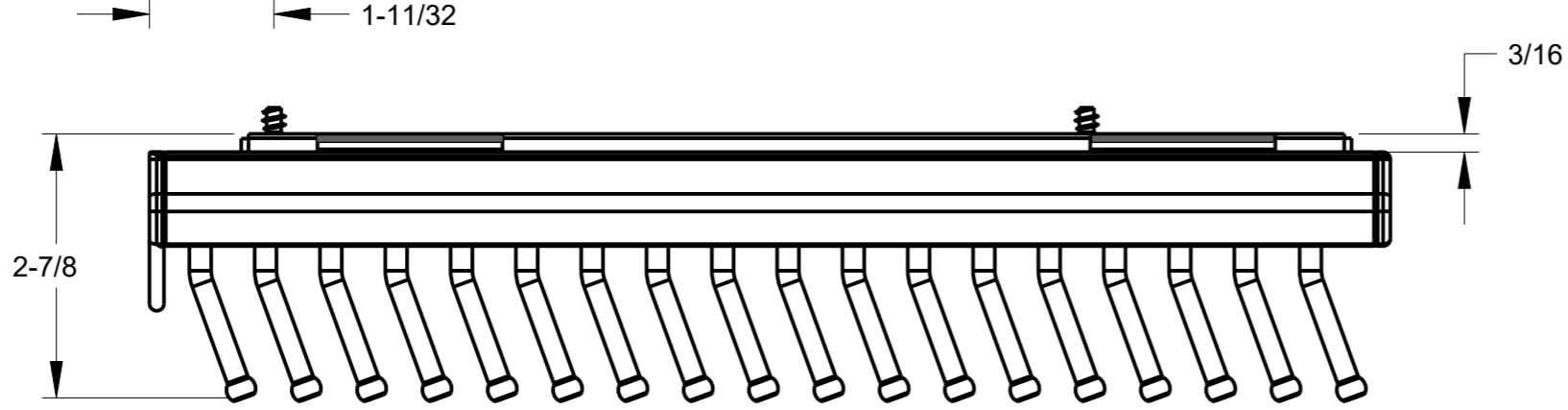
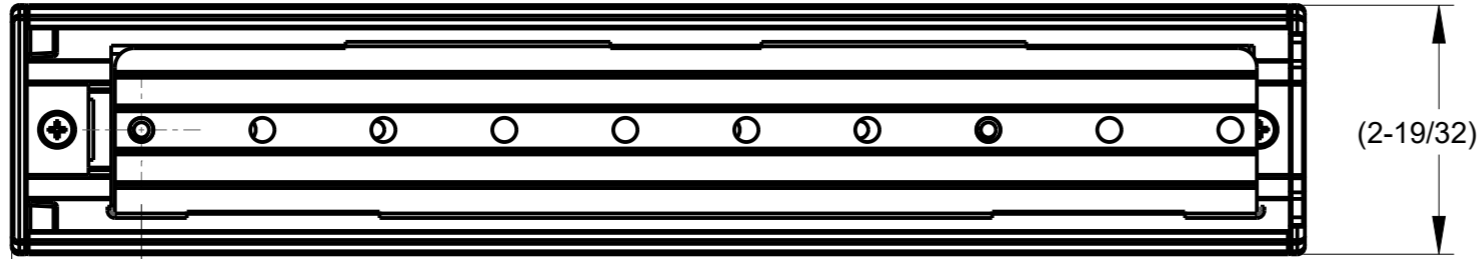
E

D

C

B

A



FINISHED GOODS TABLE		
HR ITEM NUMBER	PRODUCT DESCRIPTION	FINISH
355T-PC	ASSY, SLIDING TIE RACK, PC	POLISHED CHROME
355T-SN	ASSY, SLIDING TIE RACK, SN	SATIN NICKEL
355T-ORB	ASSY, SLIDING TIE RACK, DORB	DARK OIL RUBBED BRONZE
355T-MB	ASSY, SLIDING TIE RACK, MB	MATTE BLACK



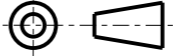
HARDWARE RESOURCES RESERVES THE RIGHT TO CHANGE SPECIFICATIONS WITHOUT NOTICE. IN CASE OF A DISCREPANCY, ACTUAL PART GEOMETRY SUPERSEDES THIS DOCUMENT.

THE INFORMATION CONTAINED WITHIN THIS DRAWING IS THE SOLE PROPERTY OF HARDWARE RESOURCES INC. ANY REPRODUCTION IN PART OR WHOLE WITHOUT WRITTEN PERMISSION OF HARDWARE RESOURCES INC. IS PROHIBITED.

DOCUMENT STATUS **Released**  
UNLESS OTHERWISE SPECIFIED DIMENSIONS ARE IN INCHES (IN)

MATERIAL N/A FINISH SEE TABLE

THIRD ANGLE PROJECTION DATE 29JUN2016



DESCRIPTION  
SLIDING CLOSET TIE RACK

DRAWING NUMBER 355T REV B

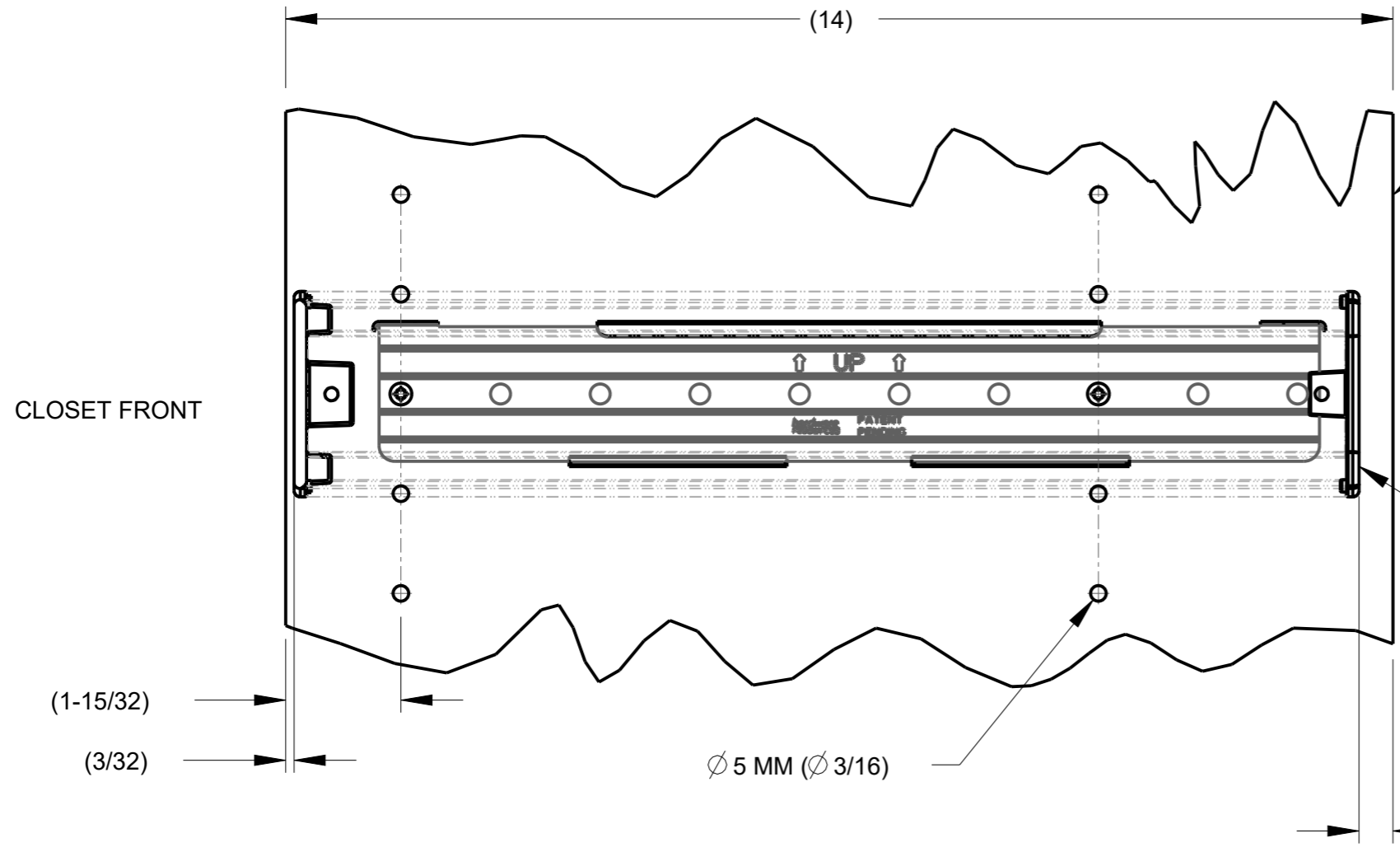
SIZE A3 SCALE 1:2 SHEET 1 / 2

8 7 6 5 4 3 2 1

8 7 6 5 4 3 2 1

F  
E  
D  
C  
B  
A

F  
E  
D  
C  
B  
A



TYPICAL INSTALLATION IN 14 INCH CLOSET PANEL WITH PREDRILLED 32mm SYSTEM HOLES

SOME ITEMS HIDDEN FOR CLARITY

SLIDE IN INSTALLED POSITION

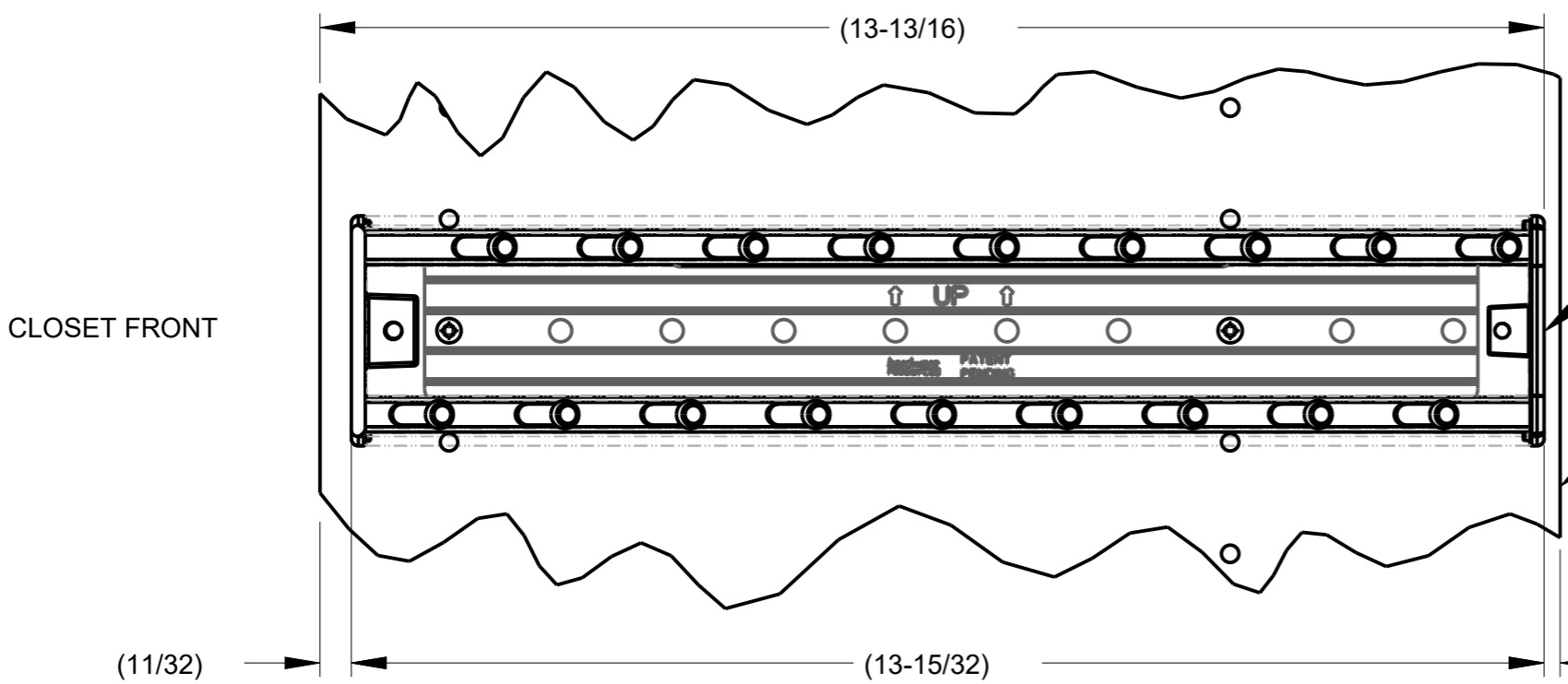
CLOSET FRONT

(1-15/32)

(3/32)

Ø 5 MM (Ø 3/16)

(7/16)



SLIDE IN PUSHED BACK POSITION

TIE RACK MUST NOT EXTEND PAST THIS EDGE IN THE PUSHED BACK POSITION

CLOSET FRONT

(11/32)

(13-15/32)

(3/16)

8 7 6 5 4 3 2 1

DRAWING NUMBER 355T		REV <b>B</b>
SIZE A3	SCALE 1:2	SHEET 2 / 2
DOCUMENT STATUS		Released