

Swift

Play Yard

PY430



MAXI-COSI®

We Carry the Future

4358-8181E 04.24.25

Safety Information

**Read all instructions BEFORE assembly and USE of product.
KEEP INSTRUCTIONS FOR FUTURE USE.**

Adult assembly required.

Play Yard Use

Age of use: With child who cannot climb out and is less than 35 in. (89 cm) in height.

WARNING

Failure to follow these warnings and the instructions could result in death or serious injury.

Prior to use, the product **MUST** be fully erected, including side rails.

Make sure latches are secure.

Strings can cause strangulation! **NEVER** place items with a string around a child's neck such as hood strings or pacifier cords.

NEVER suspend strings over product or attach strings to toys.

NEVER place product near a window where cords from blinds or drapes can strangle a child.

Child can become entrapped and die when improvised netting or covers are placed on top of product. **NEVER** add such items to confine child in product.

When child is able to pull to standing position, remove large toys and other objects that could serve as steps for climbing out.

Discontinue use of the product when child is able to climb out or reaches the height of 35 in. (89 cm).

ALWAYS provide the supervision necessary for the continued safety of your child. When used for playing, **NEVER** leave child unattended.

ALWAYS place baby on back to sleep to reduce the risks of SIDS and suffocation.

NEVER use this product if there are any loose or missing fasteners, loose joints, broken parts, or torn mesh/fabric. Check before assembly and periodically during use. Contact Dorel Juvenile Group for replacement parts. **NEVER** substitute parts.

SUFFOCATION HAZARD

Babies have suffocated:

on pillows, comforters, and extra padding

continued on next page

in gaps between product sides and a wrong-size mattress or extra padding.

NEVER add soft bedding, padding, or an extra mattress.

ONLY use the mattress as described in the warnings on this product.

Use **ONLY** mattress/pad provided with this product or contact the manufacturer for a replacement mattress/pad.

NEVER use plastic shopping bags or other plastic film as mattress covers not sold and intended for that purpose. They can cause suffocation.

NEVER use a water mattress with this product.

NEVER leave child in product with side lowered. Be sure side is in raised and locked position whenever child is in product.

Bassinet Use

Age of use: For child up to 15 lb (6.8 kg)



WARNING

Failure to follow these warnings and the instructions could result in death or serious injury.

SUFFOCATION HAZARD – Babies have suffocated:

- On pillows, comforters, and extra padding
- In gaps between a wrong-size mattress, or extra padding and product sides
- **NEVER** add soft bedding or padding.
- Use **ONLY** mattress provided by manufacturer.

continued on next page

Always place baby on back to sleep to reduce the risk of SIDS and suffocation.

FALL HAZARD: To help prevent falls, do not use this product when the infant begins to push up on hands and knees or has reached 15 lb, whichever comes first.

If a sheet is used with the pad, use only the one provided by the product manufacturer or one specifically designed to fit the dimension of the product mattress.

Strings can cause strangulation! Do not place items with a string around a child's neck, such as hood strings or pacifier cords. Do not suspend strings over a product or attach strings to toys.

Do not use if any part of the bassinet is broken, torn, or missing. (Contact Consumer Relations for replacement parts and instructional literature if needed).

STRANGULATION HAZARD

Children have **STRANGLED** when their necks became trapped between accessories and play yard frames.

Remove the bassinet anytime the child is in the play yard.

Contents



Parts of Play Yard 1



Unfolding Play Yard 2



Installing Bassinet 4
Installing Mattress Pad in Play Yard 7



Folding Play Yard 11
Travel Bag Use 14



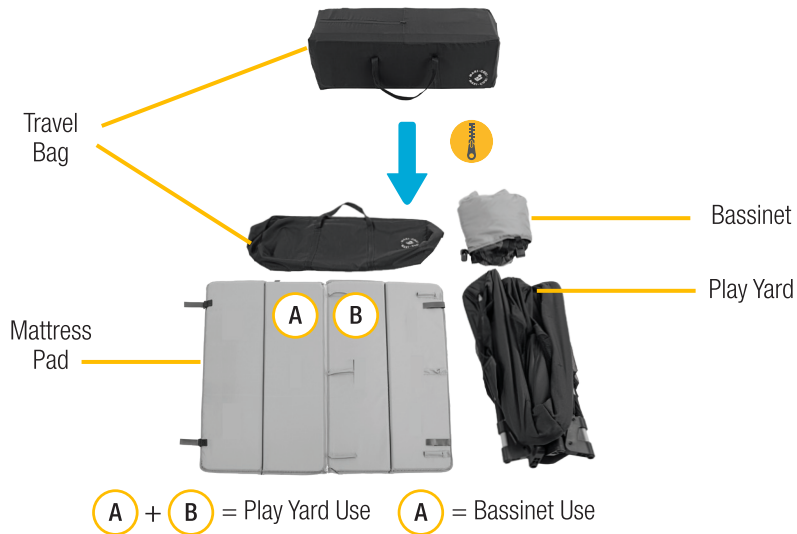
Wash & Care 15



Dorel Juvenile Group Information 16



Parts of Play Yard



Lay out and identify all of the parts.

If any parts are missing, **do not return this product to the place of purchase.**

Please contact Consumer Care via:

Phone: 1-800-544-1108

Text: 1-812-652-2525

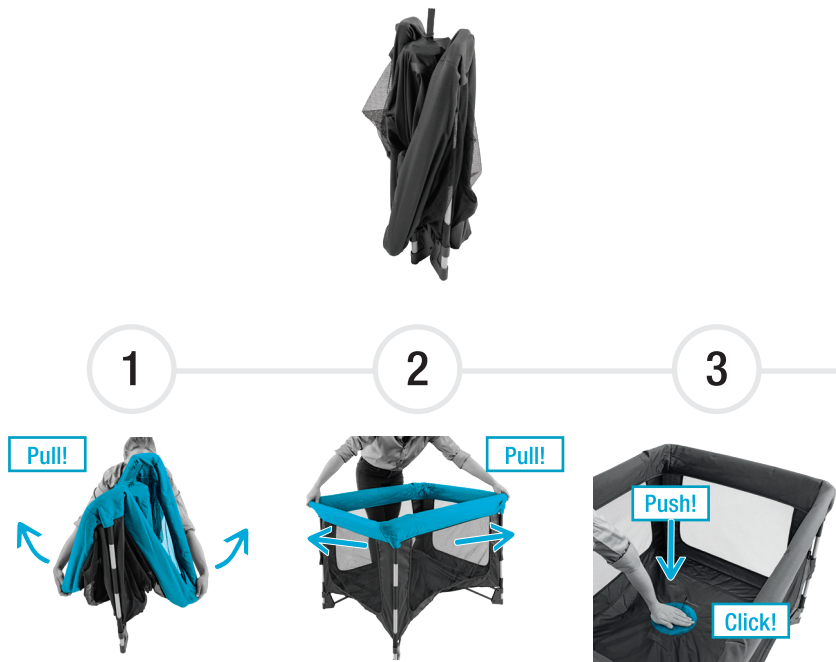
Chat: www.maxicosi.com

You will need to know the model number (PY430) and manufacture date.

It is located on a label on the bottom of the play yard.



Unfolding Play Yard



continued on next page



up to 15 lb (6.8 kg)
see page 4



up to 35 in. (89 cm) tall
see page 7

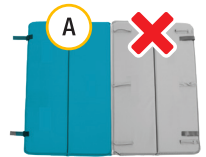


Installing Bassinet



up to 15 lb (6.8 kg)

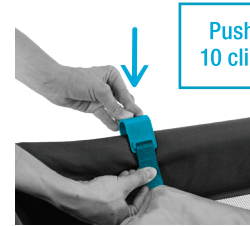
You will need:



1

2

3

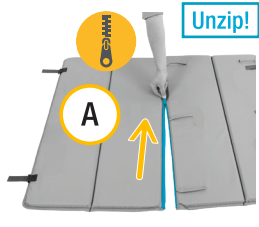


continued on next page



4

5



Push the mattress pad down to make sure the fastening strips on the bottom of the pad are securely attached to the fastening strips on the bottom of the bassinet.



up to 15 lb
(6.8 kg)



WARNING

FALL HAZARD

To help prevent falls, **DO NOT** use this bassinet when the infant begins to push up on hands and knees or has reached the manufacturers recommended weight of 15 lb (6.8 kg), whichever comes first.



Installing Mattress Pad in Play Yard



up to 35 in. (89 cm) tall



You **MUST** remove the bassinet to use the play yard with older children.

Follow steps 1–3 to remove bassinet.

If the bassinet is not installed, go to step 4.

1



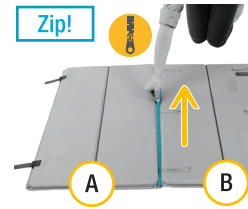
2



3



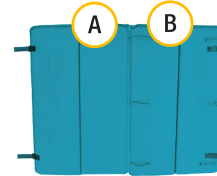
4



5



You will need:



continued on next page



6



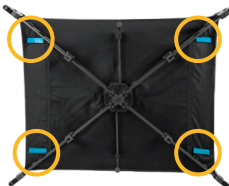
Push 4 mattress pad straps down through the slots in each corner of the play yard.

7



Pull! 4 straps

8



Fasten 4 mattress pad straps to the underside of the play yard.



up to 35 in.
(89 cm) tall



WARNING

Discontinue use of the product when child is able to climb out or reaches the height of 35 in. (89 cm).



Folding Play Yard



You **MUST** remove the bassinet to fold the play yard.
Follow steps 1–3 to remove bassinet then go to step 6.
If the bassinet is not installed, go to step 4.

1



2



3



4



Unfasten 4 mattress pad straps from the underside of the play yard.

5



6



continued on next page



7

Pull!



8

Pull!



Travel Bag Use

1



2



3





Wash & Care



Machine wash separately with cold water on a gentle cycle.

- Do not use bleach.
- Do not iron.
- Air dry.
- Do not dry clean.



Spot Clean Only



Spot Clean Only



Dorel Juvenile Group Information

Thank you for choosing this play yard!

The DJG family is committed to creating products with the most comfort and convenience available today.

For parts availability or if you have questions or any concerns with this product, please contact our Consumer Care Department:



Send Us a Text: 1-812-652-2525
(US and Canada Only)
Carrier Fees May Apply)



Find Us Online: www.maxicosi.com

Email Us: support@djgusa.com



Give Us a Call: 1-800-544-1108
(Toll Free, US and Canada Only)

Include the model number (PY430) and manufacture date (located on a label on the bottom of the play yard) and a brief description of the part.

- Bassinet
- Mattress Pad

Two-Year Limited Warranty

Dorel Juvenile Group, Inc. warrants to the original purchaser that this product (Swift Play Yard), is free from material and workmanship defects when used under normal conditions for a period of two (2) years from the date of purchase. Should the product contain defects in material or workmanship Dorel Juvenile Group, Inc., will repair or replace the product, at our option, free of charge.

Purchaser will be responsible for all costs associated with packaging and shipping the product to Dorel Juvenile Group Consumer Care Department at the address noted on the back of this document and all other freight or insurance costs associated with the return. Dorel Juvenile Group will bear the cost of shipping the repaired or replaced product to the purchaser.

Product should be returned in its original package accompanied by a proof of purchase, either a sales receipt or other proof that the product is within the warranty period. This warranty is void if the owner repairs or modifies the product or the product has been damaged as a result of misuse. This warranty excludes any liability other than that expressly stated previously, including but not limited to, any incidental or consequential damages.

SOME STATES DO NOT ALLOW THE EXCLUSION OR LIMITATION OF INCIDENTAL OR CONSEQUENTIAL DAMAGES, SO THE ABOVE LIMITATION OR EXCLUSION MAY NOT APPLY TO YOU. THIS WARRANTY GIVES YOU SPECIFIC LEGAL RIGHTS, AND YOU MAY ALSO HAVE OTHER RIGHTS THAT MAY VARY FROM STATE TO STATE.



Swift

Play Yard

PY430

©2025 Dorel Juvenile Group, Inc. (800) 544-1108 www.maxicosi.com. Styles and colors may vary. Les styles et les couleurs peuvent varier. Made in CHINA. Fabriqué en CHINE. Distributed by (distribué par) Dorel Juvenile Group, Inc., 2525 State St., Columbus, IN 47201-7494. Dorel Juvenile Canada, 2233 Argentinia Road, Suite 110, Mississauga, ON L5N 2X7. Importado y Distribuido en Chile por: Comercial e Industrial Silfa S.A. - San Ignacio 0201 / Parque Industrial Portezuelo Quilicura, Santiago Chile. Fono (562) 2339 9000. En Perú por: Comexa S.A. - Los Libertadores 455 - San Isidro, Lima - Perú. Fono (511) 4469014. En Centro América, Caribe y Ecuador por: Best Brands Group S.A. - Av. Balboa, Bay Mall Plaza, Planta Baja, local 9, Panamá. - Fono: (507) 300 2884. En Colombia por: Baby Universe S.A.S. - Vía 40 No. 77-29, Barranquilla, Colombia - Fono: (575) 353 1110 Importador: DJGM, S.A. DE C.V. Gabriel Mancera No. 1041 Col. Del Valle, Benito Juárez C.P. 03100 México, Ciudad de México R.F.C. DJG140305GN9 Tel. (55) 67199202

