



NCM530W

530W, 2.90 cu. ft. capacity

Nacho Chip Warmer Instruction Manual

This manual contains important information regarding your Adcraft unit. Please read this manual thoroughly prior to equipment set-up, operation, and maintenance. Failure to comply with regular maintenance guidelines outlined in this manual may void the warranty.



IMPORTANT SAFEGUARDS

The Nacho Warming Station must be properly installed before using it. Follow the installation and precautions carefully.

- **DO NOT** use the unit for anything other than intended use.
- **DO NOT** change, modify or tamper with this equipment.
 - * Temperature is precision calibrated at factory,
- **PROPER GROUNDING REQUIRED.**
 - * **DO NOT** cut or remove the grounding pin. If you do not have a three-prong electric receptacle outlet available, have a certified electrician install a proper outlet.
 - * **DO NOT** use a wall receptacle that is not properly grounded.
- **ONLY** connect to a electrical outlet with the correct electrical supply
- **DO NOT** attempt to operate this unit with a damaged cord or plug.
- **DO NOT** operate this appliance with missing or broken parts. Contact manufacturer for OEM replacement parts.
- Immediately replace worn power cords, loose plugs and power outlets.
 - * If the supply cord is damaged, contact the manufacturer or its service agent or a qualified repair service.
- **DO NOT** use extension cords or adapters to connect the unit to an electrical power source.
- **DO NOT** unplug the machine by pulling or tugging on the power cord. Firmly grasp the plug and remove from outlet.
- **DO NOT** allow pets or animals to chew on cords.
- **DO NOT** cover the electrical cord. Keep cord away from traffic areas.
- **DO NOT** plug or unplug unit with wet hands.
- **DO NOT** immerse in water.
- **UNPLUG** your appliance **BEFORE** cleaning or making any repairs.
- **DO NOT** touch any hot surfaces
- **DO NOT** install in cabinet or enclosed spaces. **FREESTANDING USE ONLY** to allow proper ventilation.
- This product is intended for **INDOOR USE ONLY. DO NOT USE OUTDOORS..**
 - * **DO NOT** use near open water, swimming pools, hot tubs or wet environments.
- **DO NOT** operate your appliance near explosive fumes.
- **DO NOT** allow children to play in or near this appliance. Close supervision is necessary when the appliance is used near children.
- Local, state and provincial electrical safety codes and guidelines must be strictly adhered to.
- This unit must be used by qualified and trained personnel. Staff should be instructed on proper daily operation and maintenance prior to usage.

CHECK PACKAGE UPON ARRIVAL

- Upon receiving this piece of equipment immediately inspect outer shipping container for damage. Report any damage to outer box to carrier.
- Unpack the Nacho Warmer and inspect for damage. Report damage to carrier and manufacturer.
- Check box to insure all pieces are included. Read the warranty information included in this booklet for RMA instructions.



PLACEMENT

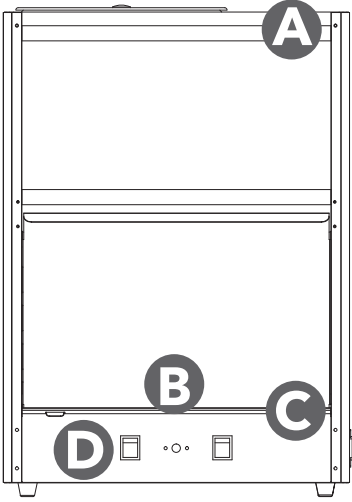
The Nacho Warmer is a freestanding design for use on a stable counter or table top.

- **DO NOT** place in a built-in or recessed area.
- **DO NOT** place on cloth or leather material.
- For maximum efficiency, the unit needs proper air circulation and proper electrical outlets.
- **DO NOT** expose unit to direct sunlight.
- The unit needs:
 - * 10 in. (25 cm) away from other equipment.
 - * 12 in. (25 cm) of clearance above
 - * 5 in. (25 cm) of space on each side and back of unit.
- The unit is designed for indoor use only. It should not be operated in a damp or wet environment. It should not be placed near sinks, swimming pools, showers or hot tubs/jacuzzi.

SPECIFICATIONS

PRODUCT DIMENSIONS (IN)	14.60" x 17.70" x 24.80"	WEIGHT	30.5 lbs.
CURRENT	4.3A	CAPACITY	2.90 cu. ft.
ELECTRICAL	120V / 60Hz / 1	PLUG TYPE	NEMA 5-15P
POWER	530 W	TEMP RANGE (°F)	75°-155°
INCLUDED COMPONENTS	Light Bulb, Stainless Steel Scoop	LIGHT BULB	60 W Tungsten Filament.

FEATURES & CONTROLS



A. Mini flood lamp located in upper corner:


- * Illuminates interior
- * Produces heat, aiding in warming the chips
- * Keeps the air dry, prolonging chip freshness.

B. Heating strips in the bottom panel keeps the chips warm and ready to serve.

C. Crumb Tray

D. Control Panel

CONTROL PANEL



- Maximum Heat Setting #5 Temperature = 482°F (250°C)



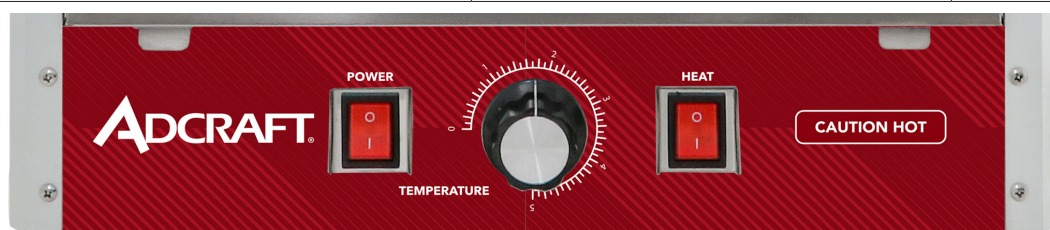
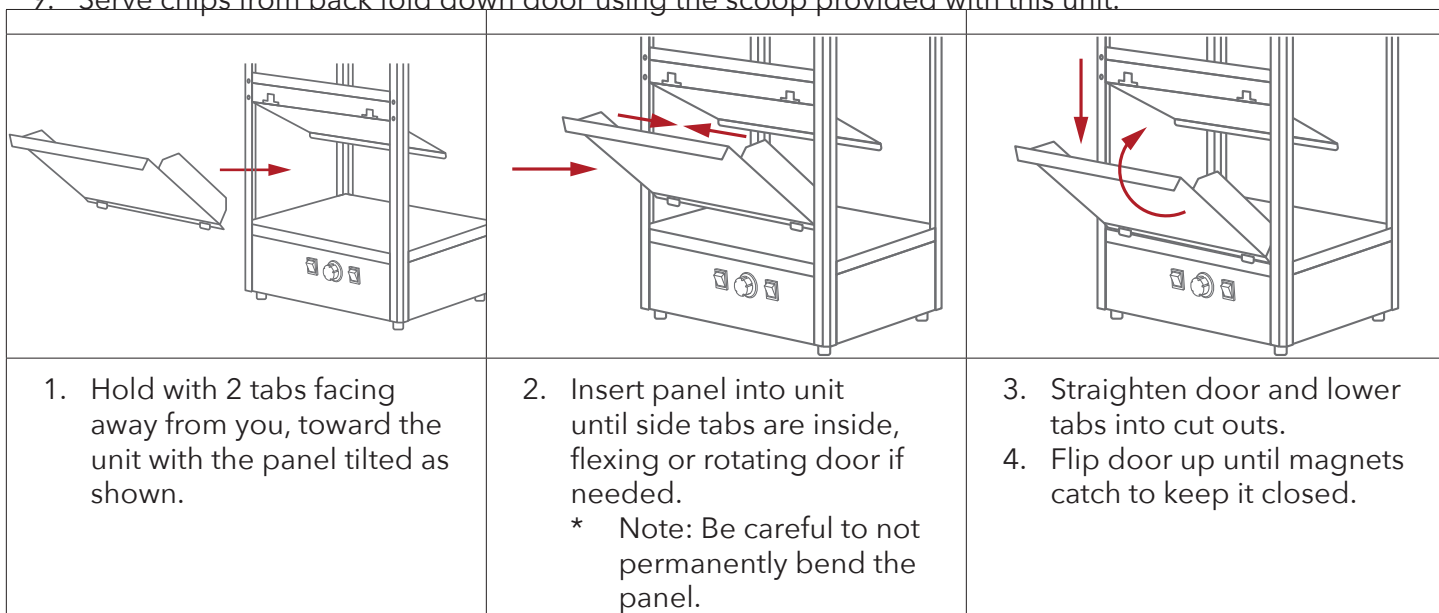
BEST PRACTICES

- Wash hands with soap and water before handling food products.
- Use rubber food safe gloves to handle chips.
- Abide by local food handling regulations.
- Keep door shut when not serving to keep chips warm and fresh.
- Avoid touching bottom or floor of this unit while in operation. It may be hot.

OPERATING INSTRUCTIONS

The Nacho Warming Station is a top loading appliance.

1. Remove the lid for filling.
 - * For visual appeal, product looks best least 2/3 full.
2. To avoid crushing and breaking the chips, refrain from pouring chips from bag or box.
 - * Filling is best accomplished by hand.
3. Gently transfer chips from bag or box to Nacho Warmer by cupping both hands and scooping up chips and setting them into the unit.
4. At least once a day turn unit off and allow 15 minutes to cool, clean crumbs and broken chip from unit.
5. Scrape crumbs across holes located on floor of unit.
6. Remove and empty crumb tray.
7. Replace drawer before resuming operation.
8. Plug in and turn unit on.
9. Serve chips from back fold down door using the scoop provided with this unit.



5. Use the thermostatic control and set the temperature to the maximum for the preheat.
6. This can be adjusted once preheated.
7. The switches and thermostatic control are located on the front of the unit.

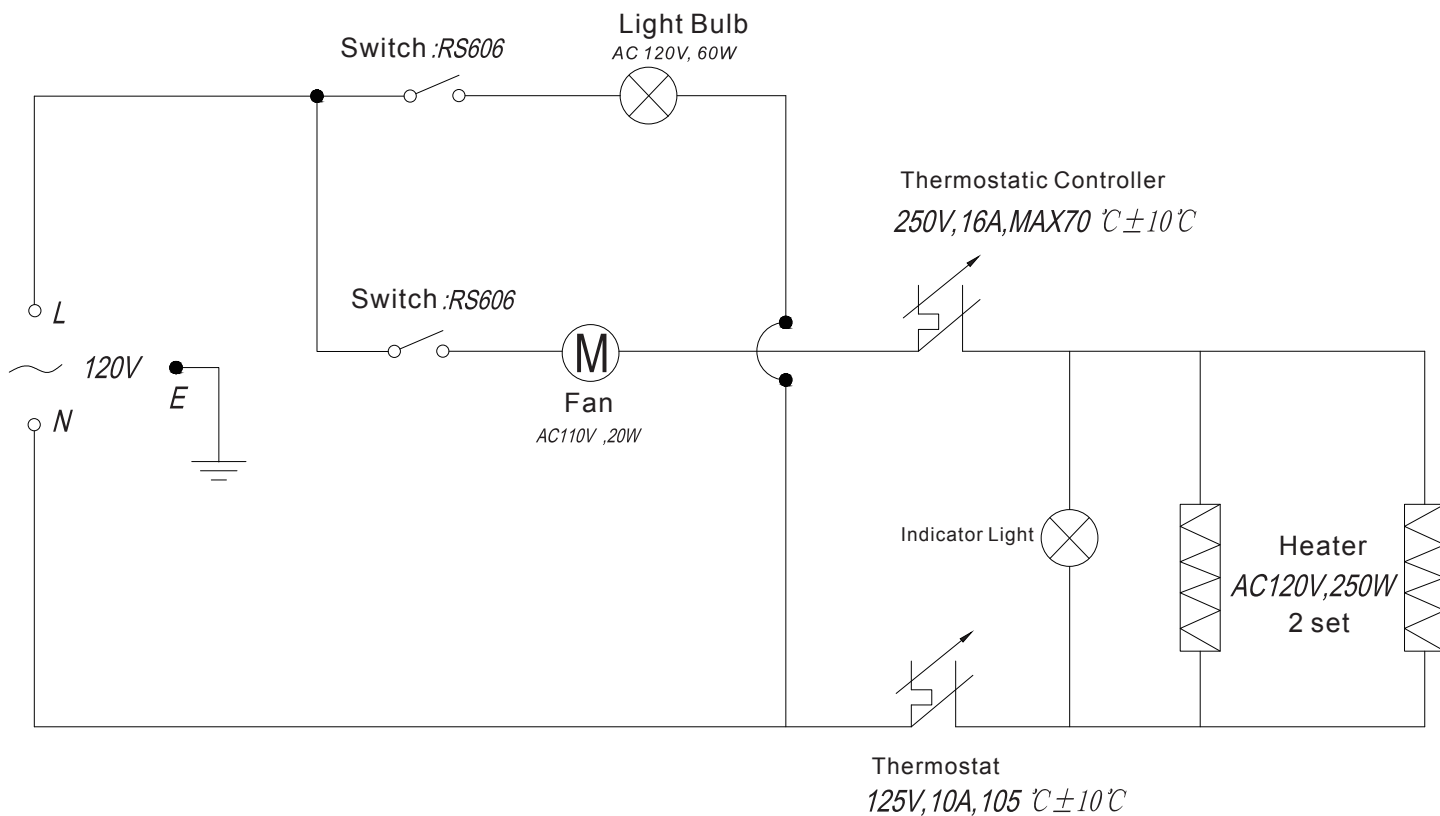
MAINTENANCE

- Follow the cleaning and maintenance guidelines to ensure a long life for your machine.
- **DO NOT** submerge unit in water or spray water into unit.
- Turn the machine OFF prior to cleaning or maintenance and allow to cool before touching rollers.
- **DO NOT** use abrasive cleaning agents, steel wool or abrasive cleaning pads on stainless steel surface.
- **DO NOT** use Abrasive cleaning agents, steel wool or abrasive cleaning pads on printed graphics on door and on glass panels.

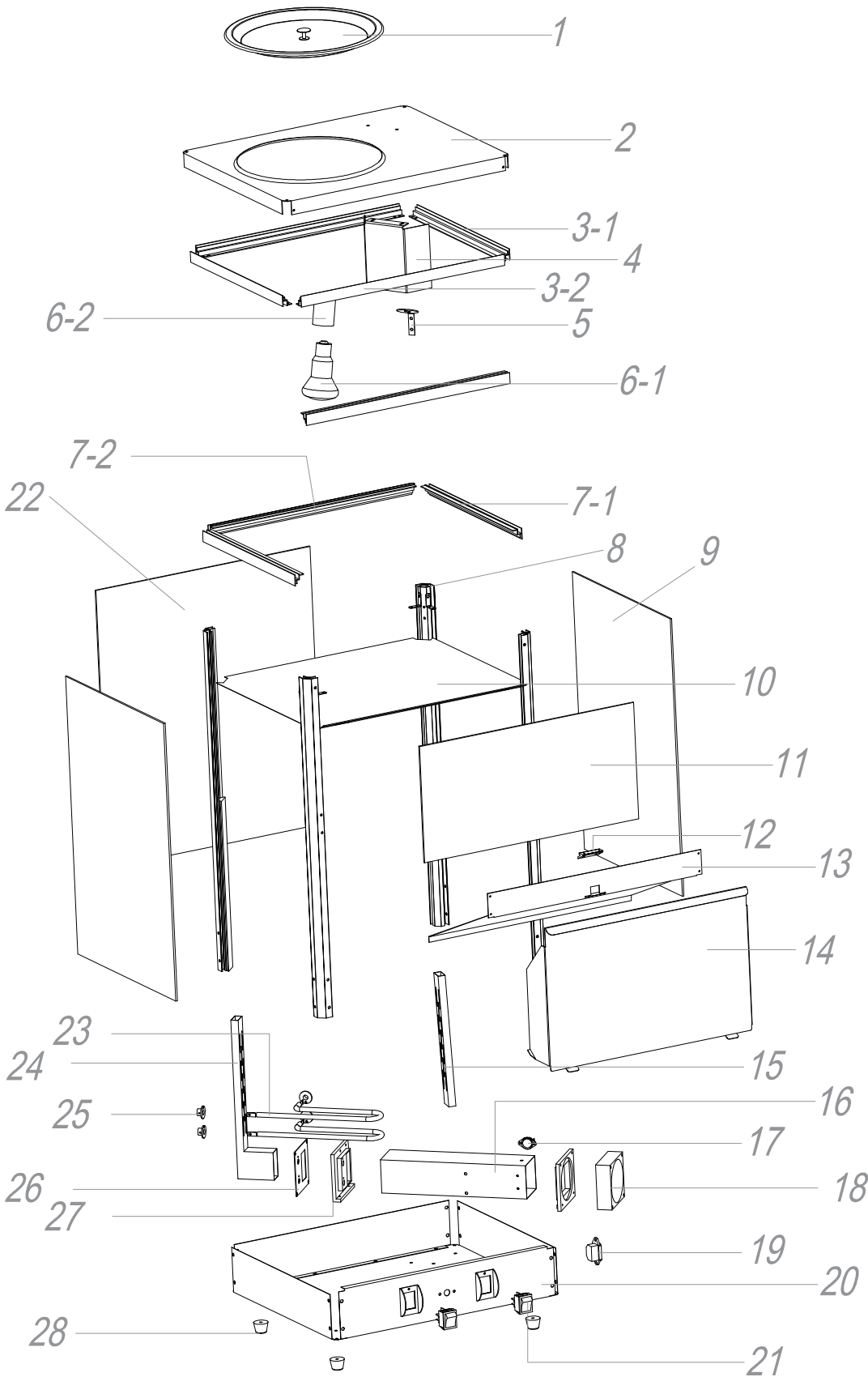
CLEANING

1. **UNPLUG** your appliance **BEFORE** cleaning.
2. Allow unit to cool for at least 15 minutes.
3. Use a brush or plastic scraper to move crumbs and food debris from unit floor
4. Clean unit using mild food safe dish soap.
5. Wipe off with a water dampened sponge.
6. Clean glass with a food safe glass cleaner.
7. Dry with soft towel.
8. Allow Nacho Warming Station to thoroughly dry before loading chips.
9. Plug in and turn power on.

CIRCUIT DIAGRAM



EXPLODED PRODUCT DIAGRAM



NO.	PART NAME
1	Lid
2	Roof Plate
3-1	Glass Holder (Left/Right)
3-2	Glass Holder (Front / Back)
4	Light Cover
5	Light Bracket
6-1	Light Bulb
6-2	Light Holder
7-1	Glass Holder (Left/Right)
7-2	Glass Holder (Front/Back)
8	Pillar
9	Side Glass
10	Deck
11	Front Glass
12	Magnet
13	Deflector Plate
14	Block Plate
15	Intake Tube
16	Pipe
17	Temperature Limiter
18	Fan
19	Outlet
20	Base
21	Switch
22	Back Glass
23	Heater
24	Outtake Tube
25	Heater Bracket
26	Tube Support
27	Pipe Link
28	Foot





1-YEAR LIMITED WARRANTY

Admiral Craft Equipment Corp. (the "Company") warrants this product (the "Product") will be free from failures in material and workmanship for one (1) year from the date of original purchase with proof of purchase, provided that the Product is operated and maintained in conformity with the Owner's Manual. This Limited Warranty is non-transferable. During this period, your exclusive remedy is repair or replacement without charge of the Product or any component found to be defective at the Company's discretion. If the Product or any component is no longer available, the Company will replace it with a similar one of equal or greater value. This Limited Warranty is void if the Product is used with voltage other than 120 Volts. **THIS WARRANTY IS IN LIEU OF ALL IMPLIED WARRANTIES, INCLUDING WARRANTIES OF MERCHANTABILITY, FITNESS FOR A PARTICULAR PURPOSE, PERFORMANCE, OR OTHERWISE, WHICH ARE HEREBY EXCLUDED. IN NO EVENT SHALL THE COMPANY BE LIABLE FOR ANY DAMAGES, WHETHER DIRECT, INDIRECT, INCIDENTAL, FORESEEABLE, CONSEQUENTIAL, OR SPECIAL ARISING OUT OF OR IN CONNECTION WITH THIS PRODUCT INCLUDING DAMAGES ARISING FOR FOOD OR BEVERAGE SPOILAGE CLAIMS.**

You may have other legal rights depending upon where you live. Some States or Provinces do not allow limitations on warranties so the foregoing may not apply to you.

WARRANTY EXCLUSIONS

IMPROPER ELECTRICAL CONNECTIONS:

The Company is not responsible for the repair or replacement of failed or damaged components resulting from electrical power failure, the use of extension cords, low voltage, or voltage spikes to the Product.

IMPROPER USAGE:

This Limited Warranty does not cover failure or other damages to the Product resulting from (i) improper usage or installation or failure to clean and/or maintain the Product as set forth in the Owner's Manual; or (ii) accident, misuse, abuse, negligence, or modification or alteration of the Product.

CONSUMABLES:

This Limited Warranty does not include consumables or wear-and-tear items such as legs, feet, plastic component parts, splash shields, filters, gaskets, and non-stick cooking surfaces.

ADJUSTMENTS & CALIBRATIONS:

Leveling, tightening of fasteners, or utility connections normally associated with the original installation are the responsibility of the dealer, installer, or the end user and not the responsibility of the Company and will not be considered warranty issues.

If you think the Product has failed, or requires service, within its warranty period, please contact the Company's Customer Care Department through our website at: www.admiralcraft.com "Service" --> "Technical Support Request". A receipt proving the original purchase date will be required for all warranty claims, handwritten receipts are not accepted. You may also be required to return the Product for inspection and evaluation. Return shipping costs are not refundable. The Company is not responsible for returns lost in transit.

This Limited Warranty is Valid only in the USA and Canada.