

ASSEMBLY AND INSTALLATION INSTRUCTIONS

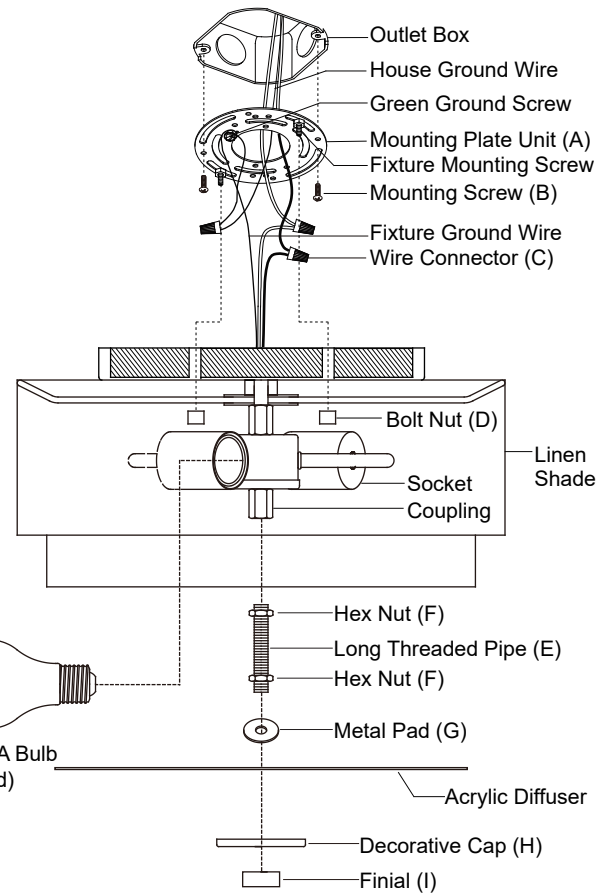
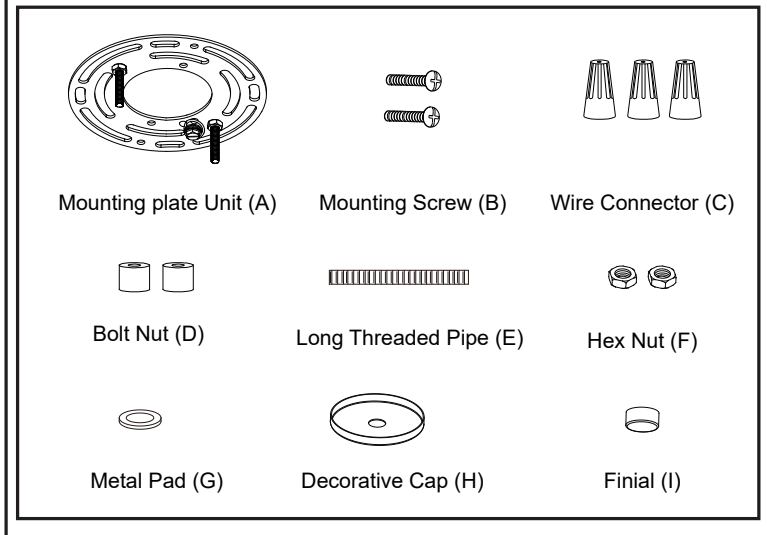
C0278 / C0279 / C0309

WARNING: TO AVOID RISK OF ELECTRICAL SHOCK, BE SURE TO SHUT OFF POWER WHILE INSTALLING OR SERVICING THIS FIXTURE.

NOTE: 1. Before installing, consult local electrical codes for wiring and grounding requirements.

2. Read and save this instructions.

Hardware Package (included):



Installation Steps

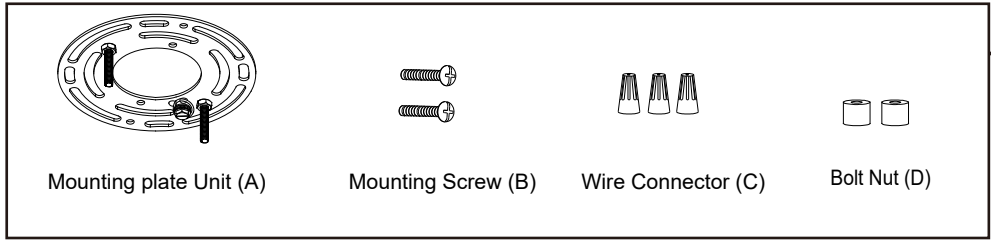
Turn off the power at fuse or circuit box

1. Attach the mounting plate unit (A) to the outlet box by using two mounting screws (B).
 2. Pull out the source wires from the outlet box. Make wire connections using wire connectors (C) as follows:
 - Connect the hot wire (black insulation) from the power source to the black wire from the fixture.
 - Connect the neutral wire (white insulation) from the power source to the white wire from the fixture.
 - Attach the fixture ground wire (bare wire) to the mounting plate unit (A) with the green ground screw, or connect to the source ground wire if available.Carefully put the wires back into the outlet box.
 3. Attach the fixture onto the mounting strap unit (A) and tighten it with two bolt nuts (D).
 4. Install 2 x 60W Max. medium base bulbs (not included). See relamping label at socket area or packaging for maximum wattage allowed.
 5. Attach the long threaded pipe (E) to coupling, then secure the preinstalled hex nut (F).
 6. Attach the hex nut (F) and the metal pad (G) to the long threaded pipe (E), slip the acrylic diffuser and decorative cap (H) up through the long threaded pipe (E), then secure them with the finial (I).
- NOTE:** The depth of the lower hex nut (F) and the metal pad (G) in long threaded pipe may need to be adjusted to properly fit the acrylic diffuser. The acrylic diffuser should be flatly laid on three brackets, and the frosted side of the acrylic diffuser should be faced down.

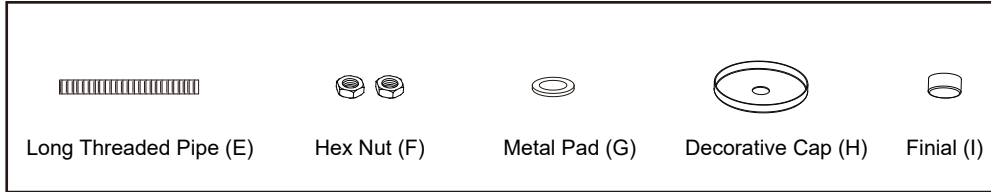
Turn on the power at fuse or circuit box

The following parts are available for reorder if damaged or missing.

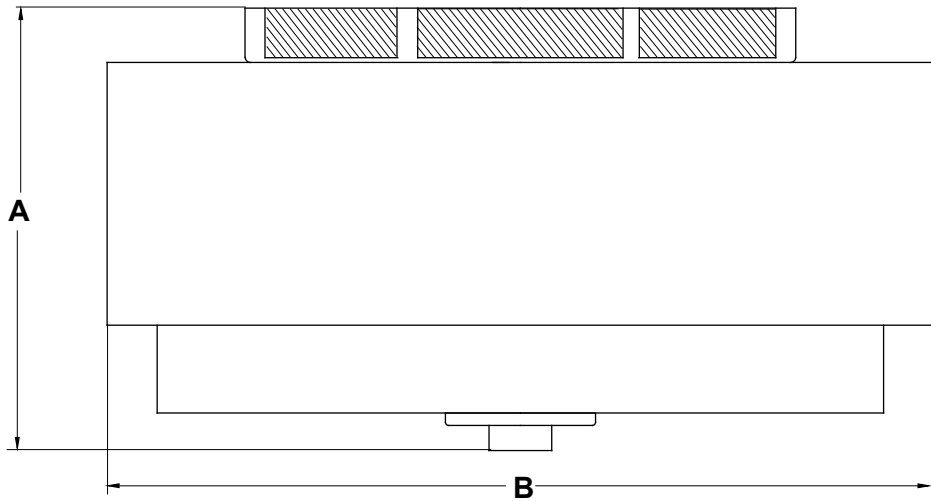
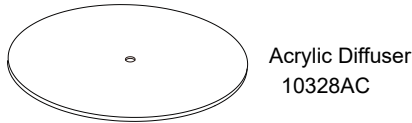
Spare Parts List:



Mounting Hardware
6578MM (1SET) for C0278 / C0309
6580MM (1SET) for C0279



Mounting Hardware
6579MM (1SET) for C0278 / C0309
6581MM (1SET) for C0279



1 Year Warranty

Vaxcel warrants all of our products against defects in workmanship and finishes for one year following the date of shipment.

Exclusions: This warranty does not include the failure of products from extreme acts of nature; environmental conditions not suited for the products intended use; operation in temperatures outside of the range specified in the instruction manual; usage with improper power supply, power surges or dips. For coastal locations, some corrosion is considered normal for the environment.

Vaxcel reserves the right to repair, replace or issue a credit for any properly installed product, provided it is returned per RMA instruction. This warranty is limited to the cost of the product only and does not extend to transportation, installation or replacement costs.

How can warranty service be obtained?
info@vaxcel.com
1-800-482-9235