

Borigni™ is a glazed body match porcelain with an industrial, urban aesthetic. Replicating the look of concrete in a variety of sizes, patterns and mosaics, Borigni™ provides a seamless look indoors to outdoors.

BORIGNI™

Glazed Body Match Porcelain



FLOOR / WALL  RESIDENTIAL  COMMERCIAL  INDOOR  OUTDOOR  POOL 



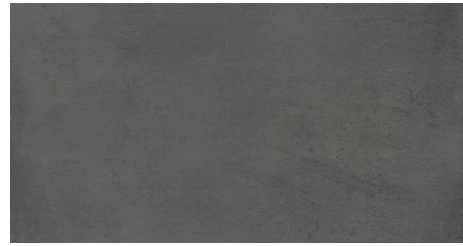
White



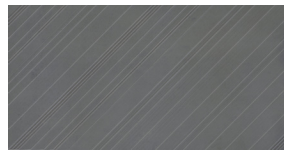
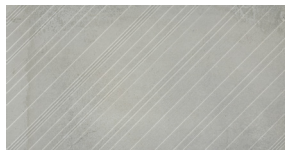
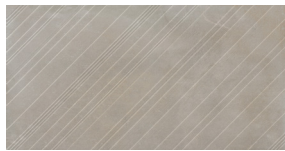
Beige



Gray



Black










Diagonal Pattern Available in 18" x 35" Only | Left & Right Styles Available

Enhance™ Collection | R11 Anti-Slip Finish



Beige, Gray, and White Bush Hammered

Available in Size 24" x 24". MOQ and lead times apply. Consult your local rep for more information.

Sizes	 35" x 35" 35.24" x 35.24"	 18" x 35" 17.54" x 35.15"	 12" x 23" 11.67" x 23.43"	 12" x 12" Mesh 11.81" x 11.81"	 3" x 12" Floor SBN	 6" x 12" Cove Base	 1" x 6" Cove Base Corner Out
Thickness	10mm	10mm	10mm	10mm	10mm	8.9mm	8.5mm
Faces	10	20	20	N/A	N/A	N/A	N/A
Finish	Matte	Matte	Matte	Matte	Matte	Matte	Matte
Edge	Rectified	Rectified	Rectified	Cut	Cut/Rounded	Pressed	Rectified
Grout Joint Recommendation	1/8"	1/8"	1/8"	1/8"	1/8"	1/8"	1/8"
Testing	Abrasion Resistance C1027	Breaking Strength C648	Chemical Resistance C650	Water Absorption C373	DCOF ANSI A1371	Scratch Hardness MOHS	Shade Variation Rating
Results*	IV	>250 lbf	Resistant	≤0.50%	>0.55	5	V2

Product and Installation Details | ANSI A108.02 Section 4.3.8.2 - For running bond/brick jointing patterns utilizing tiles (square or rectangular) where the side being offset is greater than 18" (nominal dimension), the running bond offset will be a maximum of 33% unless otherwise specified by the tile manufacturer. If an offset greater than 33% is specified, specifier and owner must approve mock-up and lippage.



Sustainability Attributes

- Red List Free
- Health Product Declaration (HPD) provided upon request
- Product Packaging is 100% recyclable
- VOC Free

*For more information visit www.emser.com. Always consult a professional for proper usage and installation.

