

**SAT3510U3VP**  
**SAT3510U3PGB**

**SAT3510U3V**  
**SAT3510U3VGB**  
**Instruction Manual**

# SATA Hard Drive Enclosure

**3.5" SuperSpeed USB 3.0 to  
SATA Hard Drive Enclosure**

**INFO SAFE**

**StarTech.com**   
*Making hard-to-find easy!*<sup>®</sup>

## **FCC Compliance Statement**

This equipment has been tested and found to comply with the limits for a Class B digital device, pursuant to part 15 of the FCC Rules. These limits are designed to provide reasonable protection against harmful interference in a residential installation. This equipment generates, uses and can radiate radio frequency energy and, if not installed and used in accordance with the instructions, may cause harmful interference to radio communications. However, there is no guarantee that interference will not occur in a particular installation. If this equipment does cause harmful interference to radio or television reception, which can be determined by turning the equipment off and on, the user is encouraged to try to correct the interference by one or more of the following measures:

- Reorient or relocate the receiving antenna.
- Increase the separation between the equipment and receiver.
- Connect the equipment into an outlet on a circuit different from that to which the receiver is connected.
- Consult the dealer or an experienced radio/TV technician for help.

## **Use of Trademarks, Registered Trademarks, and other Protected Names and Symbols**

This manual may make reference to trademarks, registered trademarks, and other protected names and/or symbols of third-party companies not related in any way to StarTech.com. Where they occur these references are for illustrative purposes only and do not represent an endorsement of a product or service by StarTech.com, or an endorsement of the product(s) to which this manual applies by the third-party company in question. Regardless of any direct acknowledgement elsewhere in the body of this document, StarTech.com hereby acknowledges that all trademarks, registered trademarks, service marks, and other protected names and/or symbols contained in this manual and related documents are the property of their respective holders.

# Table of Contents

<b>Introduction</b> .....	<b>1</b>
Packaging Contents.....	1
System Requirements .....	1
<b>Installation</b> .....	<b>2</b>
Hardware Installation.....	2
Driver Installation.....	4
PCIe USB 3.0 Card Installation (SAT3510U3VP/ SAT3510U3PGB only) .....	5
Driver Installation.....	6
Verifying Installation.....	6
<b>Using the Enclosure</b> .....	<b>7</b>
<b>Specifications</b> .....	<b>9</b>
<b>Technical Support</b> .....	<b>10</b>
<b>Warranty Information</b> .....	<b>10</b>

## Introduction

The StarTech.com USB 3.0 to SATA external hard drive enclosure allows almost any standard 3.5-inch internal SATA Hard Disk Drive (HDD) to be made into a cost-effective external SuperSpeed USB 3.0 hard drive. With data transfer rates up to 5 Gbps (10 times faster than USB 2.0), speed is no longer compromised for convenience, ease of use or portability. The USB 3.0 HDD Enclosure is backward compatible with USB 2.0, making it more than suitable for use with computers that don't yet have USB 3.0 ports. Constructed of sturdy, light-weight aluminum and no fans, the enclosure offers optimal and quiet cooling for even current, high-capacity hard drives - an ideal external storage solution that is backed by a StarTech.com 1 year warranty and free lifetime technical support. The SAT3510U3VP/SAT3510U3PGB models include a PCI Express (PCIe) based USB 3.0 card, for desktops not already equipped with USB 3.0.

## Packaging Contents

- 1 x External Hard Drive Enclosure
- 1 x USB 3.0 cable
- 1 x PCI Express USB 3.0 card (SAT3510U3VP, SAT3510U3PGB only)
- 1 x Screw kit
- 1 x Power Adapter
- 1 x Software CD
- 1 x Instruction Manual

## System Requirements

- USB enabled computer system with available USB port
- Available power outlet
- 3.5" SATA hard drive (SATA revision 1/2/3 compatible)
- Microsoft® Windows® XP/Server 2003/Vista/Server 2008 R2/7 (32/64-bit)

# Installation

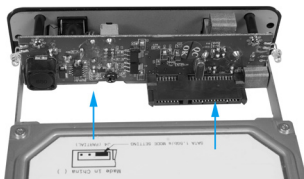
**WARNING!** Hard drives require careful handling, especially when being transported. If you are not careful with your hard disk, lost data may result. Always handle your hard drive and storage device with caution.

## Hardware Installation

1. Remove the rear panel, to expose the internal SATA connections:

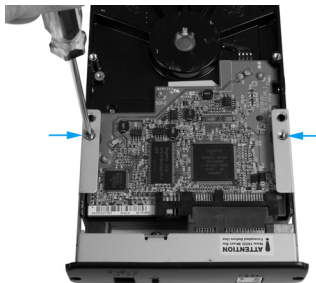


2. Position the hard drive you wish to install such that the SATA connection is facing towards the SATA interface connector provided by the Enclosure's front panel:

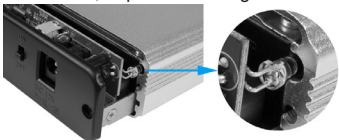


3. With the hard drive connected to the front panel, turn the drive over to expose its base. Fasten the hard drive to the front panel rails on both sides, using the screws provided (2):

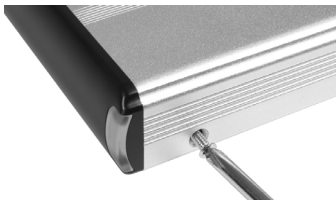




4. Fasten the front panel (with drive attached) to the body of the Enclosure; be cautious that the drive and front panel are properly aligned with the body of the Enclosure, to prevent damage to the LEDs.



5. Fasten both sides of the case to lock the hard drive in place:



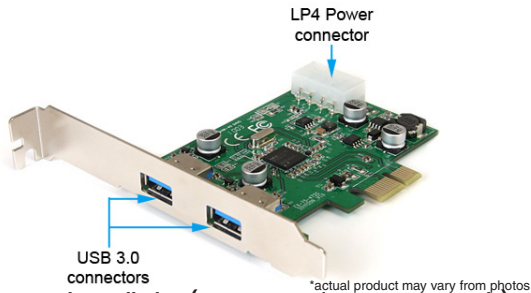
6. Fasten the rear panel to the Drive Enclosure on both sides using the screws (2) provided.



7. Once the drive has been secured within the Enclosure, connect the DC power adapter to the DC power port. Connect the remaining end of the power adapter to an available power outlet.
8. Connect the USB cable to the USB host port on the rear panel of the Enclosure, then connect the remaining end of the cable to the host computer.
9. With the host computer powered on, power on the Drive Enclosure using the On/Off switch. The operating system will detect the presence of the added drive, following which you will be able to properly format/partition the installed drive from within the operating system.

## Driver Installation

No driver installation is required for the compatible operating systems, as this enclosure is natively supported, so the drivers are already installed.



## PCIe USB 3.0 Card Installation (SAT3510U3VP/SAT3510U3PGB only)

\*actual product may vary from photos

**WARNING!** PCI Express cards, like all computer equipment, can be severely damaged by static electricity. Be sure that you are properly grounded before opening your computer case or touching your PCI Express card. StarTech.com recommends that you wear an anti-static strap when installing any computer component. If an anti-static strap is unavailable, discharge yourself of any static electricity build-up by touching a large grounded metal surface (such as the computer case) for several seconds. Also be careful to handle the PCI Express card by its edges and not the gold connectors.

1. Turn your computer off and any peripherals connected to the computer (i.e. printers, external hard drives, etc.). Unplug the power cable from the rear of the power supply on the back of the computer.
2. Remove the cover from the computer case. See documentation for your computer system for details.
3. Locate an open PCI Express slot and remove the metal cover plate on the rear of the computer case. Note that this card will work in PCI Express slots of additional lanes (i.e. x4, x8 or x16 slots)
4. Insert the card into the open PCI Express slot and fasten the bracket to the rear of the case, per your computer's documentation.
5. Connect an LP4 molex power connector from the computer's power supply to the LP4 connector on the card.
6. Place the cover back onto the computer.
7. Insert the power cable into the socket on the power supply.

## Driver Installation

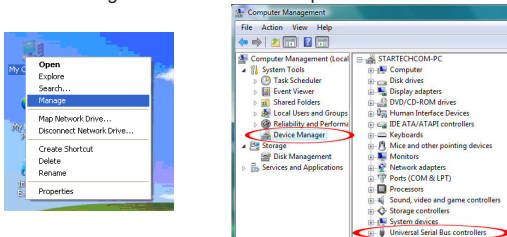
### Windows XP/Server 2003/Vista/7

1. Upon starting Windows, if the “Found New Hardware” wizard appears on the screen, cancel/close the window and insert the included Driver CD into the computer’s CD/DVD drive.
2. AutoPlay should automatically launch the Driver installation screen. If not, open “My Computer” and right-click on the CD/DVD drive the disk is inserted into and select “AutoPlay” or run the setup.exe file on the CD.
3. Complete the wizard and this should automatically install all necessary drivers.

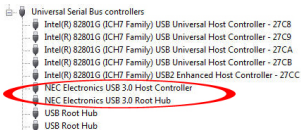
## Verifying Installation

### Windows XP/Server 2003/Vista/7

From the main desktop, right-click on “My Computer” (“Computer” in Vista/7), then select Manage. In the new Computer Management window, select Device Manager from the left window panel.



In the Device Manager, under the Universal Serial Bus Controllers category, you should see the new entries for the USB controller card.

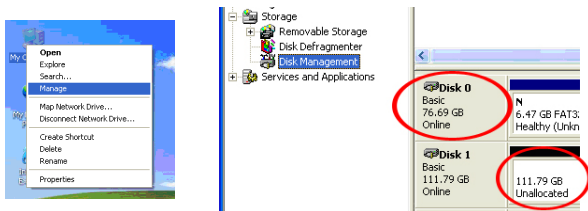


\*actual names may vary

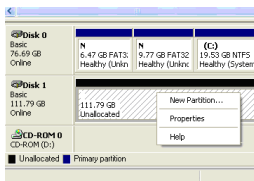
## Using the Enclosure

### Windows 2000/XP/Vista/7

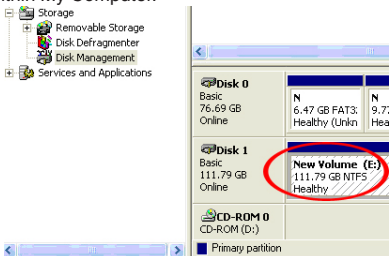
If you are using a brand new hard drive that does not contain any data, then you will first need to prepare the hard drive for use. From the main desktop, right-click on “My Computer” (“Computer” in Vista/7), then select Manage. In the new Computer Management window, select Disk Management from the left window panel.



Locate the Disk that says it is “Unallocated” (check hard drive capacity to confirm it’s the correct hard drive) and then right-click in the section that says “Unallocated” and select “New Partition”.



The New Partition Wizard will appear. Follow the instructions in the wizard to complete setting up the drive. Once complete, the Disk should show up as “Healthy” with a drive letter assigned (i.e. E:). This drive letter should now appear within My Computer.



If you are installing a hard drive that already has data on it, then after plugging it in, the drive should automatically show up with a drive letter assigned within My Computer.

## Specifications

<b>Bus Interface</b>	USB 3.0
<b>Chipset ID</b>	JMicron JMS539
<b>Connectors</b>	1 x USB 3.0 type B female 1 x DC Power
<b>LEDs</b>	1 x Power/Activity
<b>Maximum Data Transfer Rate</b>	<b>USB 3.0:</b> 5 Gbps
<b>Compatible Hard Drives</b>	3.5" SATA 1.5/3.0/6.0 Gbps compatible hard drives
<b>Power Adapter</b>	12VDC, 2000mA, center positive, type M plug
<b>Operating Temperature</b>	0°C ~ 60°C (32°F ~ 140°F)
<b>Storage Temperature</b>	-20°C ~ 80°C (-4°F ~ 176°F)
<b>Humidity</b>	5 ~ 90% RH
<b>Dimensions</b>	186.0mm x 104.0mm x 31.5mm
<b>Weight</b>	570 g
<b>Compatible Operating Systems</b>	Windows XP/Server 2003/Vista/Server 2008 R2/7 (32/64-bit)

## Technical Support

StarTech.com's lifetime technical support is an integral part of our commitment to provide industry-leading solutions. If you ever need help with your product, visit [www.startech.com/support](http://www.startech.com/support) and access our comprehensive selection of online tools, documentation, and downloads.

## Warranty Information

This product is backed by a one year warranty.

In addition, StarTech.com warrants its products against defects in materials and workmanship for the periods noted, following the initial date of purchase. During this period, the products may be returned for repair, or replacement with equivalent products at our discretion. The warranty covers parts and labor costs only. StarTech.com does not warrant its products from defects or damages arising from misuse, abuse, alteration, or normal wear and tear.

### Limitation of Liability

In no event shall the liability of StarTech.com Ltd. and StarTech.com USA LLP (or their officers, directors, employees or agents) for any damages (whether direct or indirect, special, punitive, incidental, consequential, or otherwise), loss of profits, loss of business, or any pecuniary loss, arising out of or related to the use of the product exceed the actual price paid for the product. Some states do not allow the exclusion or limitation of incidental or consequential damages. If such laws apply, the limitations or exclusions contained in this statement may not apply to you.



StarTech.com has been making “hard-to-find easy” since 1985, providing high quality solutions to a diverse IT and A/V customer base that spans many channels, including government, education and industrial facilities to name just a few. We offer an unmatched selection of computer parts, cables, A/V products, KVM and Server Management solutions, serving a worldwide market through our locations in the United States, Canada, the United Kingdom and Taiwan.

Visit **[www.startech.com](http://www.startech.com)** today for complete information about all our products and to access exclusive interactive tools such as the Cable Finder, Parts Finder and the KVM Reference Guide.