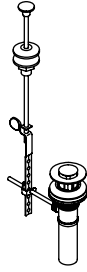


# Installation Guide

## Pop-Up Drain

K-7114, K-7126

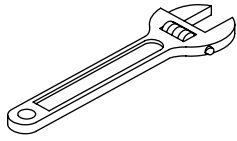


**M** product numbers are for Mexico (i.e. K-12345**M**)  
Los números de productos seguidos de  
**M** corresponden a México (Ej.  
K-12345**M**)  
Français, page "Français-1"  
Español, página "Español-1"

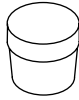
THE BOLD LOOK  
OF **KOHLER**®

1041498-2-C

## Tools and Materials



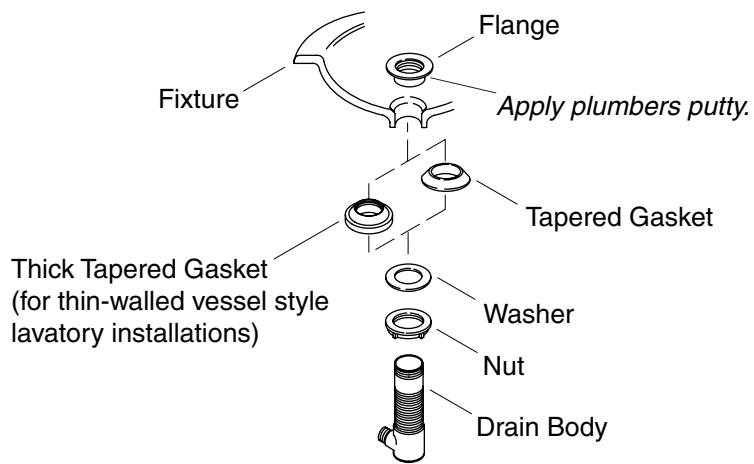
Adjustable Wrench



Plumbers  
Putty

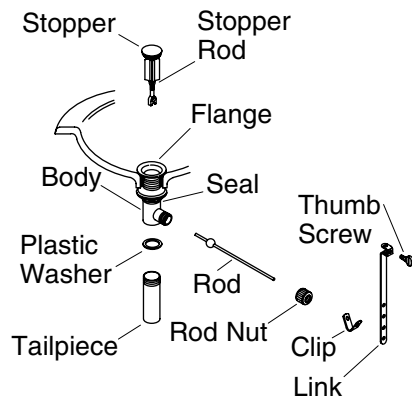
## Before You Begin

- Observe all local plumbing and building codes.
- If possible, install the drain before installing the plumbing fixture.
- Inspect the supply tubing for damage. Replace as necessary.
- Kohler Co. reserves the right to make revisions in the design of faucets without notice, as specified in the Price Book.



## Drain Installation

- Remove the protective cover from the flange.
- Unscrew the flange from the drain body.
- **For installation to thin-walled vessel style lavatories:** remove the tapered gasket from the drain body and install the thick tapered gasket.
- Apply a ring of plumbers putty or other sealant to the underside of the flange according to the putty manufacturer's instructions.
- From the underside of the fixture, insert the drain body up into the drain hole.
- From the top of the fixture, securely hand tighten the flange onto the drain body.
- Thread the nut up the drain body until the flange sits snug within the lavatory hole. Be careful not to rotate the drain when tightening the nut. Using a wrench, tighten the nut.
- Make sure the lift rod hole is facing the back of the fixture, and securely tighten the nut.
- Remove any excess putty or sealant.



## Complete Drain Installation

**IMPORTANT!** If the tailpiece has been removed, double check that the plastic washer is installed inside the flange body or the drain will leak.

- Connect the P-trap to the tailpiece.
- Press the seal into the lift rod hole on the body.
- Insert the stopper into the flange.
- For regular installations, insert the short end of the rod into the lift rod hole and **under** the stopper rod. For vandal-resistant installations, fit the rod **through** the hole in the stopper rod. Hand tighten the rod nut.
- Remove and adjust the stopper as needed so it lifts about 3/8" (1 cm) when opened. To adjust, rotate the threaded stopper rod in or out as needed. Retighten the stopper nut.
- Slide one end of the clip onto the rod. Slide the link onto the lift rod with the thumbscrew facing the back of the fixture.
- Squeeze the other end of the clip, aligning the hole with the rod. Move the link to the proper position by squeezing the clip and sliding it along the rod.
- Insert the lift rod into the hole in the body and then into the hole in the link.
- Tighten the thumbscrew onto the link so the lift rod knob extends 1/2" (1.3 cm) above the lift rod hole.
- Check for leaks.