

the electric blanket by sliding the temperature control switch to the '0' position.  
**STEP 6:** Unplug the electric blanket from the mains power supply.



**WARNING:** Do not have the controller set to a high heat setting whilst the bed is occupied; always switch it to the low heat setting. The high and medium heat settings should only be used to preheat the bed. Unplug the heated under blanket from the mains power supply when it is not in use.

**Washing and drying the electric blanket**

The controller must be disconnected from the electric blanket before it is washed or dried.

**Hand-washing the electric blanket**

Immerse the electric blanket in water mixed with a hand-wash detergent and wash gently by hand.



**CAUTION:** Always remove the controller first; do not allow any part of the controller to be immersed in water or any other liquid.

**Machine washing the electric blanket**

Wash the electric blanket on a 'wool' or 'delicates' cycle or according to the washing machine manufacturer's instructions, with a neutral detergent or mild soap powder at a max. temperature of 40 °C.



**CAUTION:** Do not use high speed or extra spin cycles to clean the electric blanket.

**Drying the electric blanket**

Drape the electric blanket over a clothing line and allow it to dry naturally; do not use pegs to secure the electric blanket in place.



**CAUTION:** Never use any form of direct heat to dry the electric blanket, such as radiators, heaters, hairdryers or tumble driers. Make sure that the electric blanket is completely dry before reconnecting the controller and refitting back onto the bed.

**Troubleshooting**

Problem	Possible cause	Solution
The electric blanket is not heating up.	The fuse may have blown.	Check the fuse by replacement.

**Storage**

When the electric blanket is not in use, it should be lightly folded and stored in a cool, dry place.  
 Do not place items on top of the electric blanket whilst it is in storage, as this may damage it.

**Specifications**

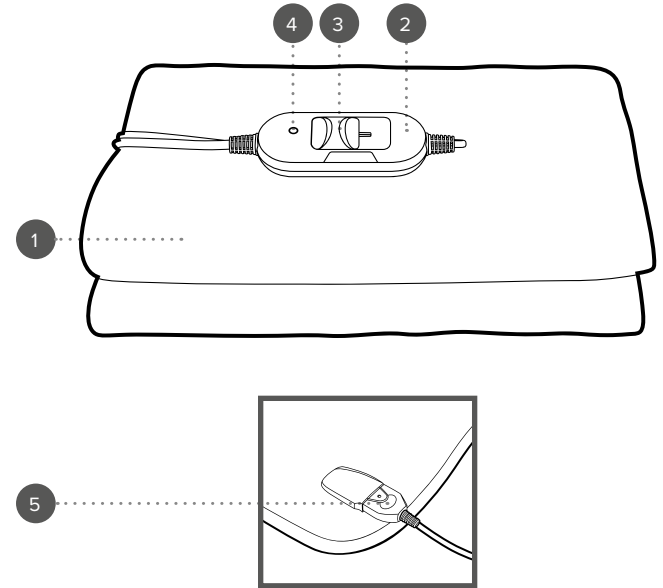
Product code: EH1284, EH1285, EH1286 King size: 165 x 137 cm – 70 W (EH1286)  
 Single size: 135 x 65 cm – 35 W (EH1284) Supply: 220–240 V 50 Hz  
 Double size: 135 x 120 cm – 60 W (EH1285)



**Disposal of Waste Batteries and Electrical and Electronic Equipment**  
 This product is labelled with this crossed out wheel bin symbol in accordance with European Directive 2012/19/EC to indicate that it must not be disposed of with your other household waste. Due to the presence of hazardous substances, mixtures or components, electrical and electronic devices that are not subject to selective sorting are potentially dangerous to the environment and human health. Please check your local city office or waste disposal service for the return and recycling of this product.

# User manual

Heated electric blanket



- 1. Electric blanket
- 2. Controller
- 3. Temperature control switch
- 4. Power indicator light
- 5. Connector



To register for your extended guarantee, scan the QR code or visit [guarantee.uppic.com/beldray](http://guarantee.uppic.com/beldray) and register your product within 30 days of purchase. For any further queries, visit [www.beldray.com](http://www.beldray.com).

Manufactured by:  
 Ultimate Products UK Ltd.,  
 Victoria Street, Manchester OL9 0DD. **UK.**  
 Ultimate Products Europe Ltd.,  
 19 Baggot Street Lower, Dublin D02 X658. **ROI.**  
**MADE IN CHINA.**  
 ©Beldray trademark. All rights reserved.  
 CD040716/MD120525/V1



Please retain instructions for future reference.

### SAFETY INSTRUCTIONS

- When using electrical products, basic safety precautions should always be followed.
- Check that the voltage indicated on the rating plate corresponds with that of the local network before connecting the product to the mains power supply.
- Children younger than 3 years old should not use this product due to their inability to react to overheating.
- Children aged from 3 years and less than 8 years should only use the product, provided that it has been placed or installed in its intended operating position and the controls have been preset by an adult and they have been given supervision by an adult.
- Children aged from 8 years and above and persons with reduced physical, sensory or mental capabilities or lack of experience and knowledge can use the product only if they have been given supervision or instruction concerning the use of the product in a safe way and understand the hazards involved.
- Children aged from 3 years and less than 8 years should not plug in, regulate or clean the product or perform user maintenance.
- Children should not perform cleaning or user maintenance unless they are older than 8 years and supervised.
- This is not a toy – children should be supervised to ensure that they do not play with the product.
- Particular attention should be given where children and vulnerable people are concerned.
- This product must not be used by persons insensitive to heat or by other vulnerable persons unable to react to overheating.
- Always unplug the product and allow to cool fully after use and before any cleaning or maintenance. If storing, allow to cool fully before folding the blanket and store without items on top of the blanket to avoid damage from creasing.
- Nominal voltage is still present in this product as long as the product is connected to the electrical source.
- If the power supply cord, plug or any part of the appliance is malfunctioning or if it has been dropped or damaged, cease using the product immediately to avoid potential injury.
- This appliance contains no user serviceable parts, only a qualified electrician should carry out repairs. Improper repairs may place the user at risk of harm.
- Keep the product and its power supply cord out of the reach of children and away from heat or sharp edges that could cause damage. This includes any parts of the product that may become hot during use and other heat emitting products.
- Do not run the supply cord under carpets, rugs etc. or anywhere where it may present a trip hazard.
- Do not immerse the control box or plug in water or any other liquid.
- Do not operate the product with wet hands.
- Do not leave the product unattended whilst connected to the mains power supply or when in use.
- Do not remove from the mains power supply by pulling the cord; switch off and remove the plug by hand.
- Do not use this product for extended periods of time – a build-up of heat could cause overheating of the body (heatstroke).

- Do not leave the product plugged in or operating overnight and while sleeping – only use the lowest heat setting when the bed is occupied.
- Do not use the product for anything other than its intended use.
- Do not use this product outdoors.
- Do not attempt to move the product whilst it is in use.
- Do not put objects into any of the openings.
- Do not insert pins into the product.
- Do not use the product folded or tucked in – regularly check that the blanket and cord do not become trapped or rucked.
- Do not crease the heated blanket.
- Do not use this product on an adjustable bed.
- Do not pinch, flex or expose the heating wire, as overheating and/or personal injury may occur.
- Do not use the product when it is wet.
- Do not use the product with a programmer, timer, separate remote-control system or any other device that will switch the product on automatically other than that supplied with the product.
- Do not clean the product with abrasive chemicals or materials such as scourers as they may damage the product and impair future function. This includes insecticide and chemical solvents. Wash the blanket according to the instructions on the care label.
- Never use accessories that are not recommended or supplied by the manufacturer. It could cause danger to the user and damage to the product.
- Use of an extension cord with the product is not recommended.
- Only use the blanket with the controller supplied.
- This product is intended for domestic use only. It should not be used for commercial purposes or medical use in hospitals.
- Always secure the heated blanket to the bed before use.

### Dos and don'ts

- DO:**
- Examine frequently for signs of damage or wear.
  - Use only as an under blanket.
  - Only use the electric blanket with the detachable controller provided.
  - Only use the lowest heat setting when the bed is occupied.
- DO NOT:**
- Use if damaged.
  - Leave the electric blanket plugged in.
  - Operate overnight or while sleeping.
  - Use the electric blanket for extended periods of time, as a build-up of heat could cause overheating of the body (heatstroke).
  - Use accessories that are not supplied with the electric blanket.
  - Use an extension cord with the electric blanket.

### Thermal cut-out device

This product is fitted with a thermal safety cut-out device, built in to prevent it from overheating. Should the product start to overheat, the thermal safety cut-out system will automatically operate and the heat settings will switch off.

### Care and maintenance

Before attempting any cleaning or maintenance, switch off the electric blanket and unplug it from the mains power supply. Disconnect the controller from the electric blanket using the retaining clip on the connector.

The electric blanket has waterproof heating elements, making it safe to immerse in water and wash either by hand or by machine.



**NOTE:** Check the wiring between the two stickers. If there is any damage, stop using the electric blanket immediately.



**CAUTION:** Before washing, always remove the controller; do not allow any part of the controller to be immersed in water or any other liquid.



**WARNING:** Do not dry-clean the electric blanket.

### Checking for wear and damage

Check the electric blanket regularly for signs of wear or damage. If the electric blanket shows signs of wear or damage, has been misused or does not work, discontinue use immediately.



**WARNING:** If the electric blanket shows any of the following signs of wear or damage, stop using immediately:

- Fraying fabric
- Scorch marks
- Exposed elements or internal parts
- Creasing or folding (which pose a risk of the electric blanket overheating)
- Soiling
- Damp/wet patches
- Tie down strings that are damaged or missing
- Worn flex cable or damage to plug
- Loose electrical connections

### Instructions for use

Heat setting	Suggested use
0 (off)	Sleeping
1 (low heat)	Reading in bed
2 (medium heat)	Preheating the bed to a warm temperature
3 (high heat)	Preheating the bed to a hot temperature

- STEP 1:** Remove the bed sheets, duvet and pillows from the bed and place the electric blanket onto the bed with the controller positioned at the bedhead end. The blanket should be placed as close to the mattress as possible, beneath mattress protectors but above mattress toppers.
- STEP 2:** Smooth the electric blanket so that there are no creases or folds and then secure it by tightening and tying the tie down strings provided. Take care not to overtighten the strings.
- STEP 3:** Secure the controller to the electric blanket using the connector and then connect the electric blanket to the mains power supply. Check for satisfactory operation and replace the bedding.
- STEP 4:** To operate the electric blanket, select the low heat setting '1', the medium heat setting '2' or the high heat setting '3' by sliding the temperature control switch on the controller to the relevant marked indicator.
- STEP 5:** Allow the electric blanket to preheat the bed. Once heated, switch off