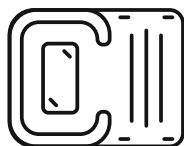


Bestway®

HYDRO FORCE® OWNER'S MANUAL



Please visit
BestwayUSA.com



bestwayusa.com

SAFETY INFORMATION

Read the manual and follow the instructions. For your own safety, always heed the advice and warnings in these instructions. Only use the product in the places and conditions for which it is intended.

TECHNICAL SAFETY INSTRUCTIONS

- Passenger numbers and load weight shall by no means exceed passenger number and maximum weight capacity in the specifications.
- This product should not be used as life saving device.
- Before every use, carefully inspect all product components, to ensure everything is in good condition and tightly secured.
- Be careful when landing on the ground. Sharp or rough objects (such as rocks, cement, shells, glass, etc.) may puncture the product.

PRODUCT DESCRIPTIONS

Item No.	Size	Passenger Number	Maximum Load Capacity
4313RE	Lounge Area: 9 ft. 2 in. x 6 ft. 7 in. / 2.8 m x 2 m Platform Area: 9 ft. 2 in. x 8 ft. / 2.8 m x 2.45 m	4 for each area	880 lbs / 400 kg for each area
	Cooler: 35.5 in. x 35.5 in. / 90 cm x 90 cm		

PARTS & TOOLS NEEDED



Compare the parts in your box to the parts listed in this manual. Verify that the equipment components represent the model that you had intended to purchase.

A



B



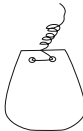
C



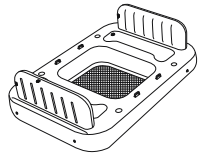
D



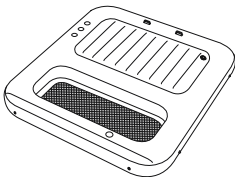
E



F



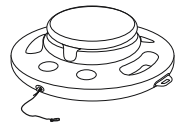
G



H



I



	A	B	C	D	E	F	G	H	I
4313RE	x1	x1	x2	x4	x2	x1	x1	x3	x1

SETUP INSTRUCTIONS

OVERVIEW

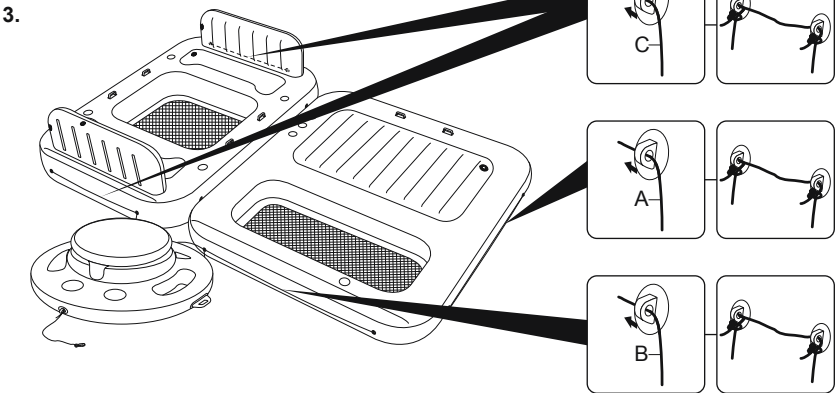
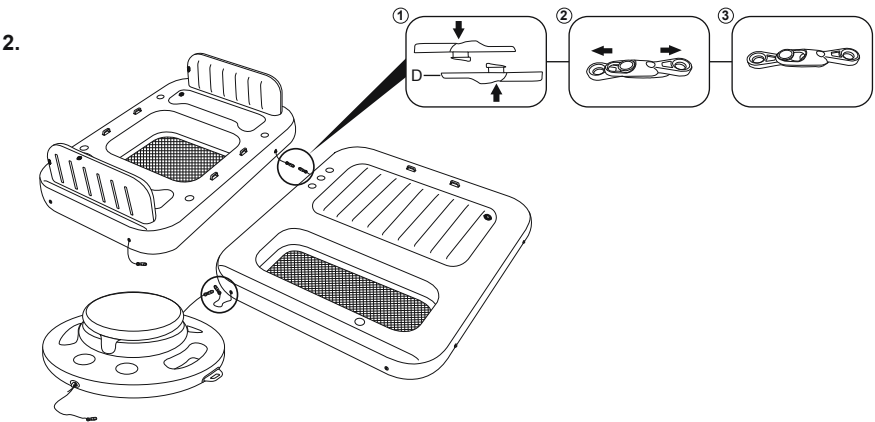
- Adult assembly required.
- Before using the product, carefully check if there are any leaks or broken parts. Open valve and inflate with the air pump (not include) to design working pressure on the product.
- Fill the air chambers until most of the wrinkles are gone and it feels firm to touch but NOT hard.
- Do not over-inflate the product. Do not use an air compressor or high-pressure pump.
- Under and over-inflation of the product will result in safety hazards.
- Be sure to close and press in the safety valves after inflation.

NOTE: Never stand on or rest objects on the product during inflation. Always check product for leaks before use.

SETUP INSTRUCTIONS

ASSEMBLY INSTRUCTIONS

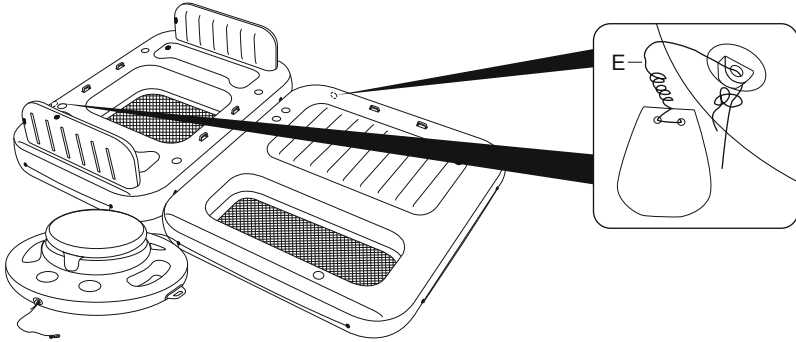
NOTE: For installation instructions, follow the illustrations inside the manual. Drawings are for illustration purposes only. May not reflect actual product. Not to scale.



Thread the rope through the grommets around the outside of the island one by one. (Only for product with rope)
NOTE: Tighten rope for a tight fit around product or loosely tie for flexible grip.

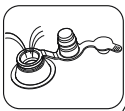
SETUP INSTRUCTIONS

4.



Fill the anchor bag with sand to weigh it down. Hang the anchor bag to make the island more stable.

DISASSEMBLY INSTRUCTIONS



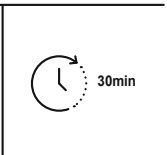
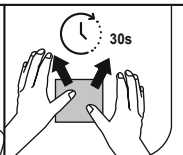
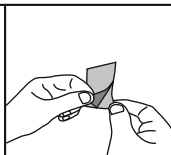
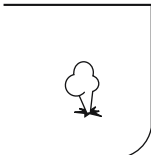
MAINTENANCE & STORAGE

1. After use, use a damp cloth to gently clean all surfaces.

NOTE: Never use solvents or other chemicals that may damage the product.

2. Store in a dry place, with a temperature higher than 59°F/15°C, out of reach of children.

REPAIR PATCH INSTRUCTIONS



©2025 Bestway Inflatables & Material Corp. All rights reserved.

Trademarks used in some countries under license from / Manufactured by Bestway Inflatables & Material Corp.,

No. 208 Jin Yuan Wu Road, Shanghai, 201812, China (Tel: +86 21 69135588).

Represented in North America by Bestway (USA) Inc., 3435 S. McQueen Road, Chandler, AZ 85286, United States of America.

www.bestwayusa.com

Bestway