

# How to Apply Screw Together Grommets

Grommets are useful on so many projects – totes and handbags, belts, capes, and other belted clothing to name a few. Screw Together Grommets offer add depth and beauty as well as being very practical. They reinforce a fabric opening so that belts or handles can safely pass through, saving wear and tear on the fabric.

A template on the package makes it easy to mark and cut the right size hole. This tutorial shows just how quickly they can be applied!

## You will need the following:

- Your project
- Screw Together Grommets #709-65
- Tiny Phillips-head screwdriver
- Marking pencil
- Sharp scissors
- Fray Check®



## What are the parts called?

709-65: Each grommet set includes Front, Back, Screws and Template.

Front – shown top side up

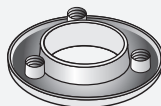


TEMPLATE  
ACTUAL SIZE

Screws



Back – shown top side up

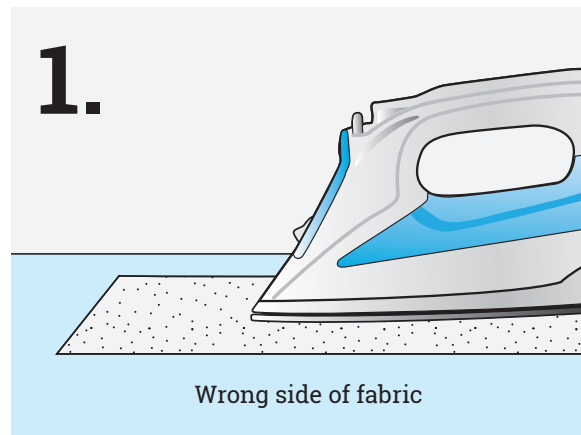


Front – shown back side up

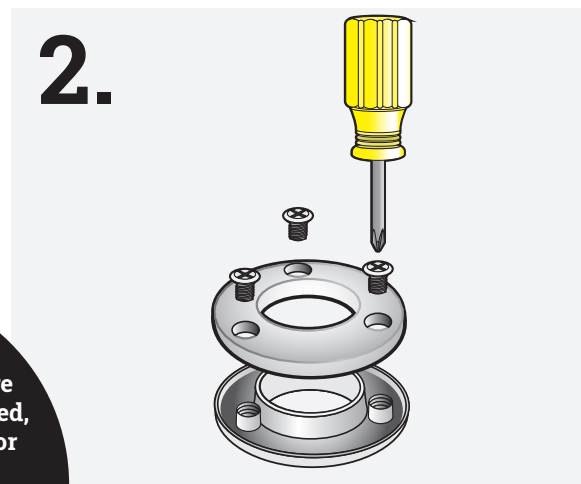


# TECHNIQUE TUTORIAL

1. Projects vary. So construction needs to vary as well. A grommet will get tugged and pulled when in use. We recommend reinforcing the grommet location with iron-on interfacing. Cut interfacing about 1" larger all around than the grommet. Place interfacing glue side down on wrong side of fabric, centered over intended grommet location. Fuse, following package directions.

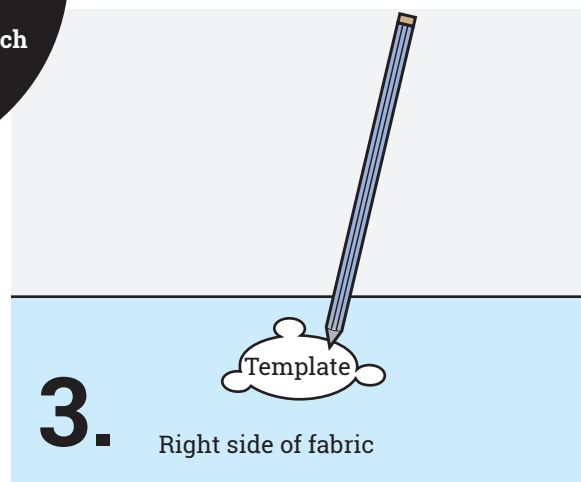


2. The grommet is screwed together when sealed in the package. Remove screws from back of grommet with a small Phillips-head screwdriver. Trace or cut out template on back of package.



**NOTE: Measure the grommet opening before removing screws. If needed, a small piece of batting or fleece can be placed between fabric layers for additional thickness. Fabric layers need to match opening between front and back.**

3. Position the template over the chosen grommet location. Use a marking pencil to draw around the template shape.



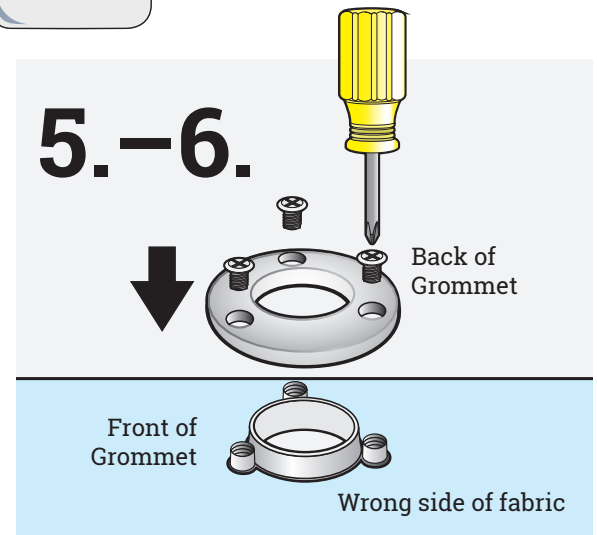
## TECHNIQUE TUTORIAL

4. Use sharp, small scissors to cut out the drawn shape from template. Seal cut edges with Fray Check®

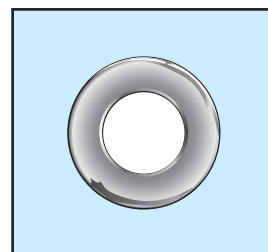


5. Place the front grommet into the hole from the right to the wrong side.

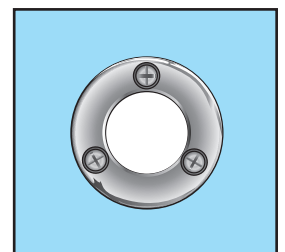
6. Turn project so wrong side faces up. Place back of grommet over the front. Match screw holes. Use Phillips-head screwdriver to tightly secure screws.



**For permanent attachment:**  
*A small amount of fabric/metal glue  
can be placed around the inside  
of the grommet before placing it into  
the hole and securing with screws.*



RIGHT SIDE  
OF FINISHED  
GROMMET



WRONG SIDE  
OF FINISHED  
GROMMET

