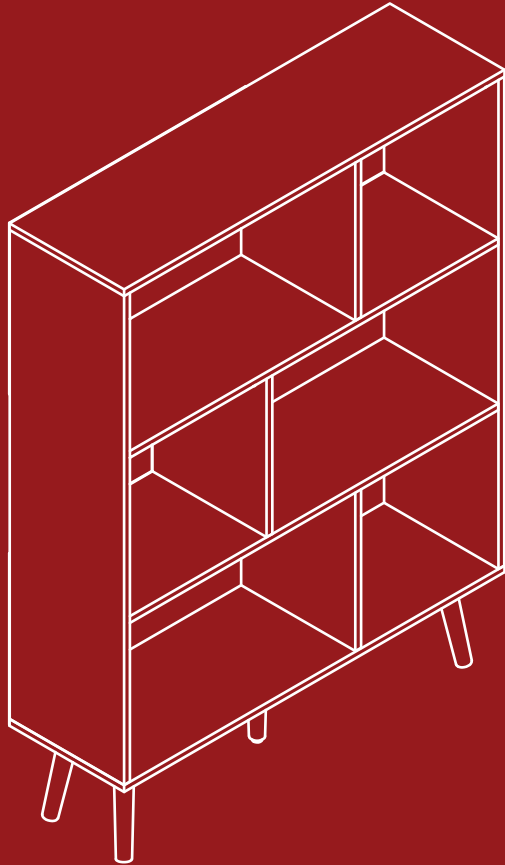




BEST CHOICE
PRODUCTS



INSTRUCTION MANUAL

3-Tier Wooden Bookcase w/
Alternating Back Panels

Ver. 1

SKY7024 + SKY7025 + SKY7026 + SKY7027 + SKY7028



W/BACK PANELS
43 LBS
CAPACITY



W/OUT BACK PANELS
37 LBS
CAPACITY



SHELF W/BACK
9 LBS
CAPACITY



SHELF W/OUT BACK
7 LBS
CAPACITY

! NOTICE

Please retain these instructions for future reference.

- Please do not exceed the weight limitations of this item.
- Do not stand on or use any part of this item as a step ladder.
- Firmly secure all bolts, screws, and knobs before use.
- Reconfirm that all bolts, screws, and knobs are secure every 90 days.
- Fasten screws loosely during initial assembly. Do not firmly tighten the screws until the item is completely assembled.
- Do not use or store this item in the proximity of open flame or flammable/combustible chemicals.
- Be aware that some parts are heavy and have sharp edges.
- If any parts are missing, broken, damaged, or worn, stop using this product until repairs are made and/or factory replacement parts are installed.
- Do not use this item in a way inconsistent with the manufacturer's instructions as this could void the product warranty.
- This product is intended for residential use only.

TOOLS REQUIRED



PHILLIPS
SCREWDRIVER
(NOT INCLUDED)



DRILL
(RECOMMENDED)



2 PERSON
ASSEMBLY



UP TO 45 MIN.
ASSEMBLY

HARDWARE

1 M6 X 35MM
CAM BOLT



18 PCS

2 M15 X 10MM
CAM LOCK



18 PCS

3 M6 X 30MM
DOWEL



28 PCS

4 M4 X 35MM
SCREW



12 PCS

5 LEG
MOUNTING
PLATE



4 PCS

6 M4 X 14MM
SCREW



22 PCS

7 M3 X 14MM
SCREW



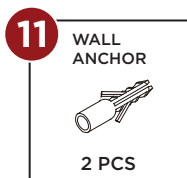
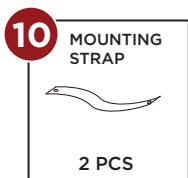
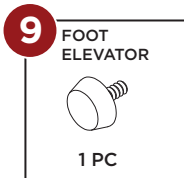
38 PCS

8 Ø20 STICKER

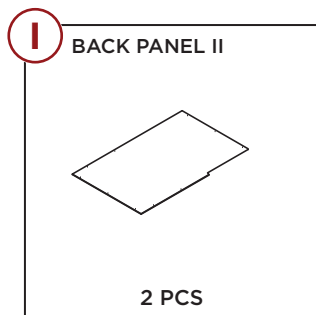
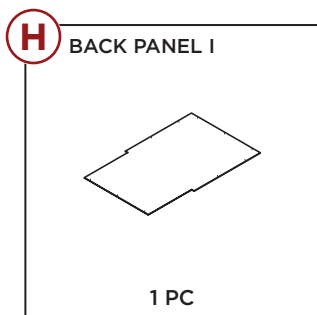
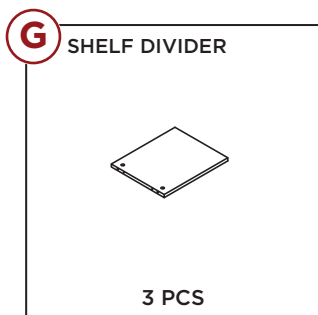
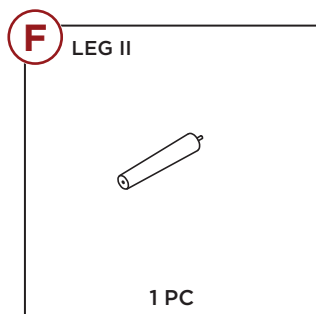
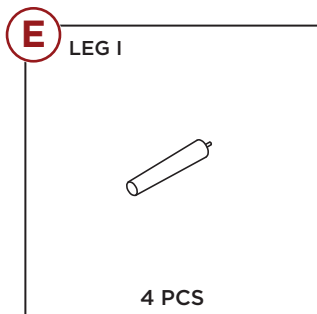
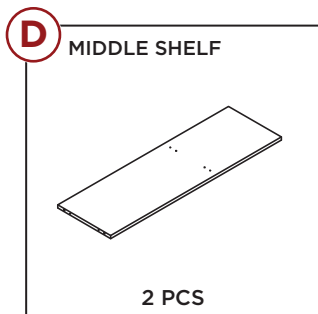
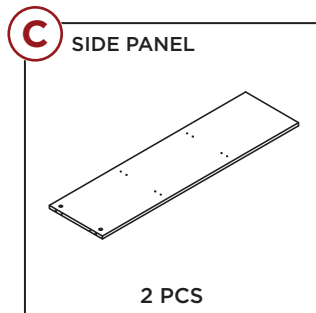
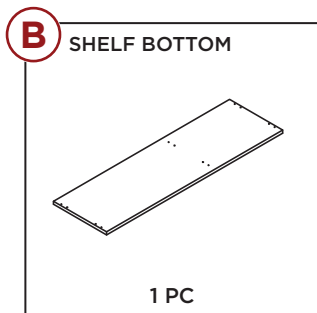
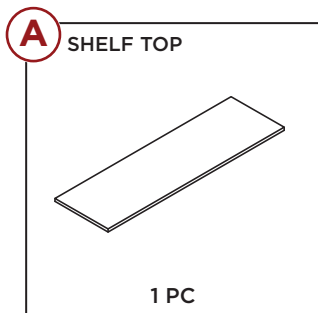


18 PCS

HARDWARE



PARTS



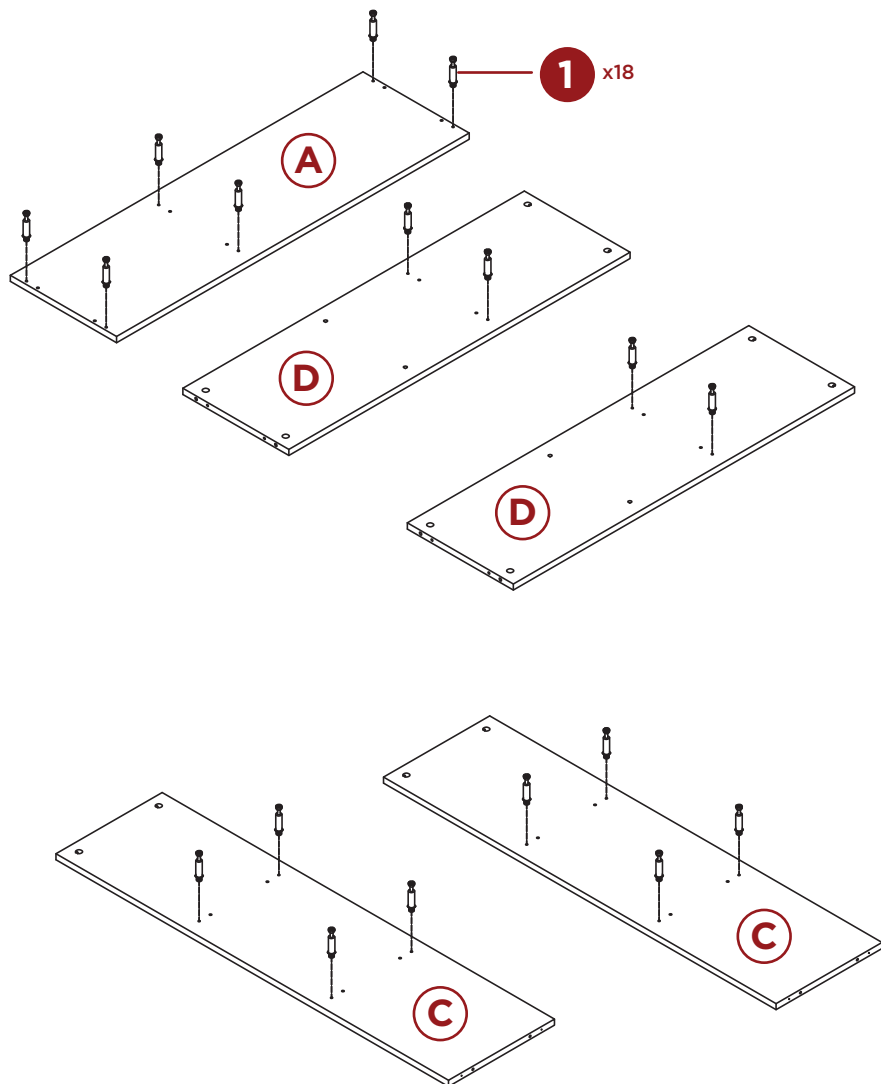
PRODUCT ASSEMBLY

1

Insert six **part 1 cam bolts** into the **part A shelf top**.

Insert four **part 1 cam bolts** into two **part D middle shelves**, two bolts per shelf.

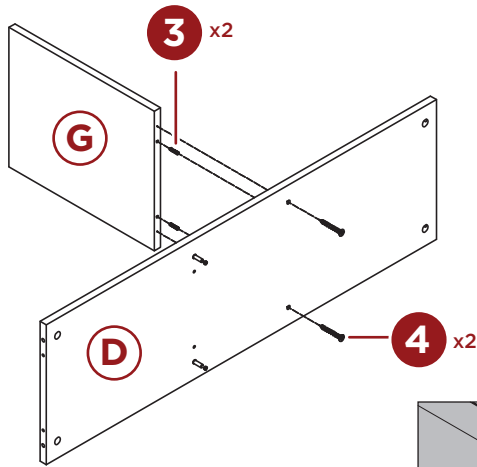
Insert eight **part 1 cam bolts** into two **part C side panels**, four bolts per side.



PRODUCT ASSEMBLY

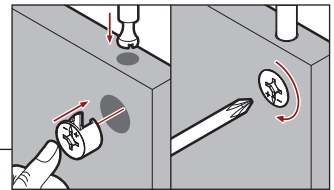
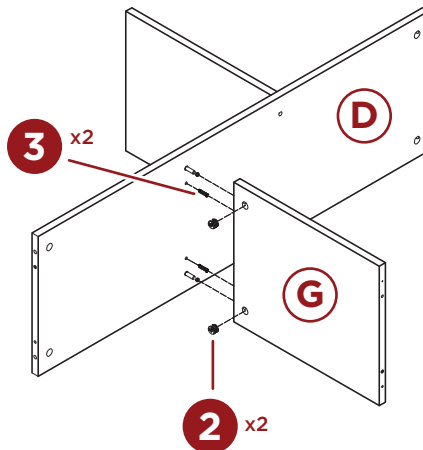
2

Insert two **part 3 dowels** into the bottom edge on one **part G shelf divider**, then attach it to one **part D middle shelf** with two **part 4 screws**.



3

Insert two **part 3 dowels** and two **part 2 cam locks** into the top of one **part G shelf divider**. Then attach it to the **part D middle shelf**, secure by turning the cam locks.

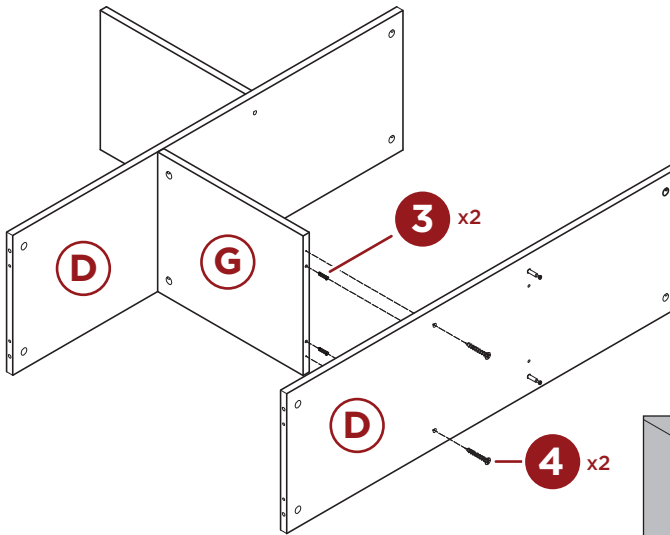


Use a screwdriver to turn the cam lock to secure the cam bolt.

PRODUCT ASSEMBLY

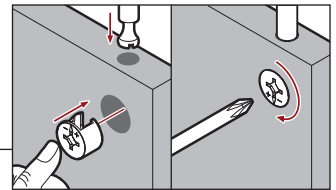
4

Place the shelf and divider assembly on a flat surface, then insert two **part 3 dowels** into the bottom edge of the lower **part G shelf divider**. Attach a second **part D middle shelf** with two **part 4 screws**.

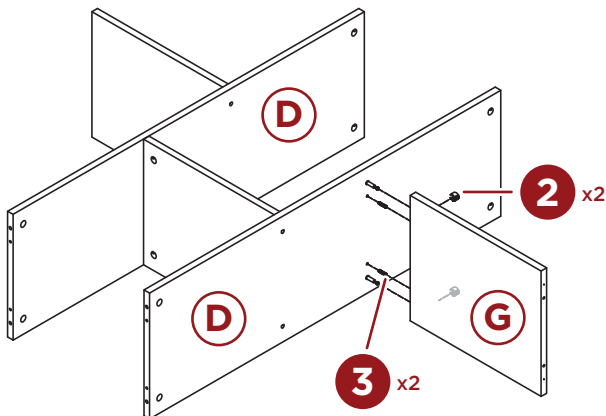


5

Insert two **part 3 dowels** and two **part 2 cam locks** into the top of one **part G shelf divider**. Then attach it to the **part D middle shelf**, secure by turning the cam locks.



Use a screwdriver to turn the cam lock to secure the cam bolt.



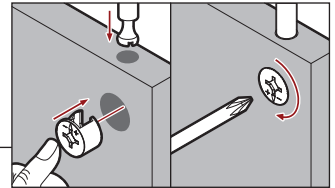
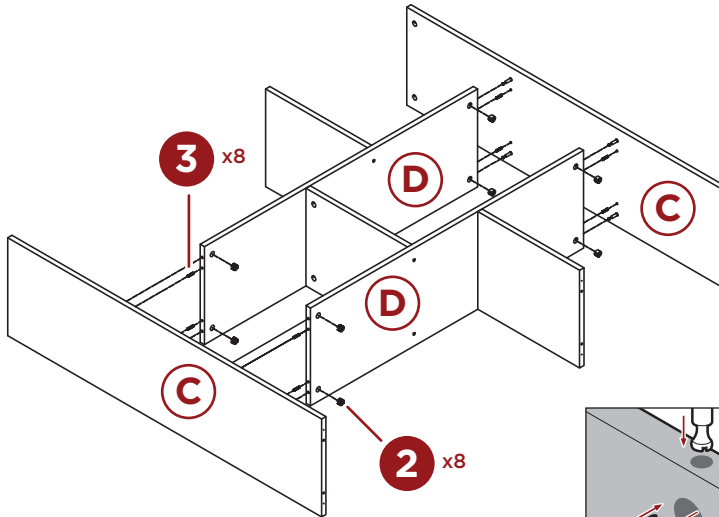
PRODUCT ASSEMBLY

6

Insert eight **part 2 cam locks** into the two **part D middle shelves**, four locks per shelf.

Insert eight **part 3 dowels** into the two **part C side panels**, four dowels per side.

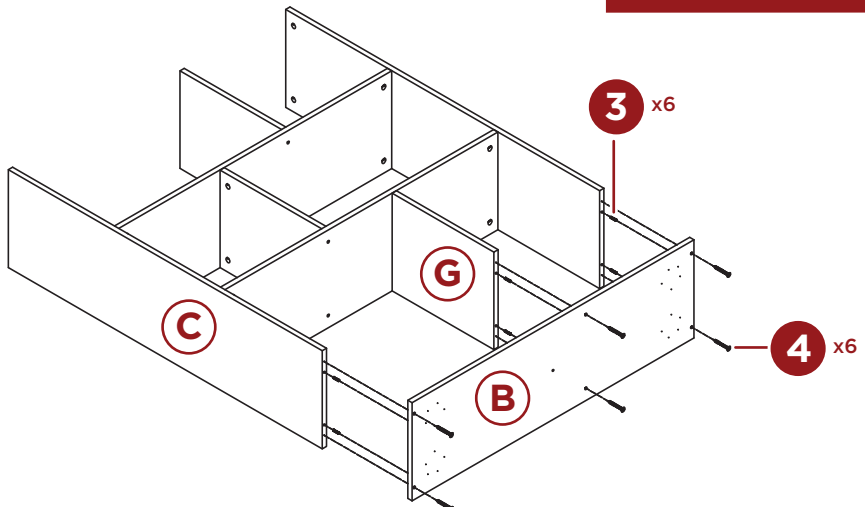
Attach the two **part C side panels** to the **part D middle shelves**, then secure by turning the cam locks.



Use a screwdriver to turn the cam lock to secure the cam bolt.

7

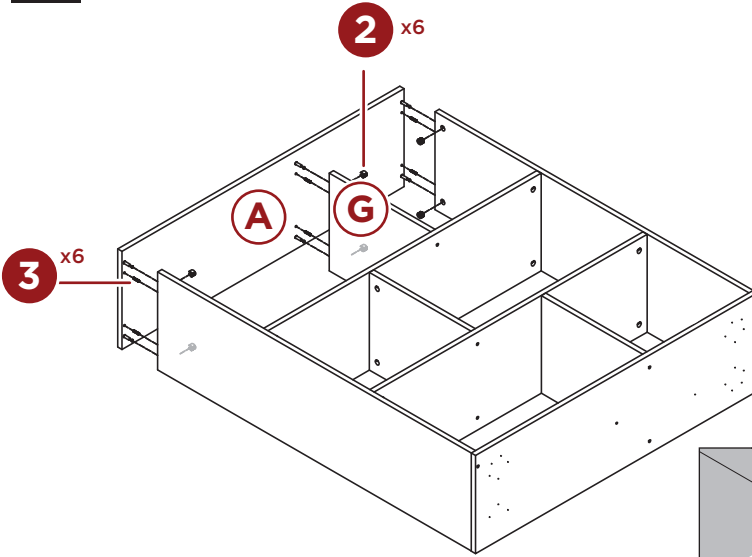
Insert two **part 3 dowels** each into the bottom of the **part C side panels** and the bottom **part G shelf divider**. Attach the **part B shelf bottom** with six **part 4 screws**.



PRODUCT ASSEMBLY

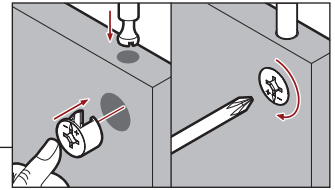
8

Insert two **part 3 dowels** and **part 2 cam locks** each into the top of the **part C side panels** and the top **part G shelf divider**. Attach the **part A shelf top**, secure by turning the cam locks.

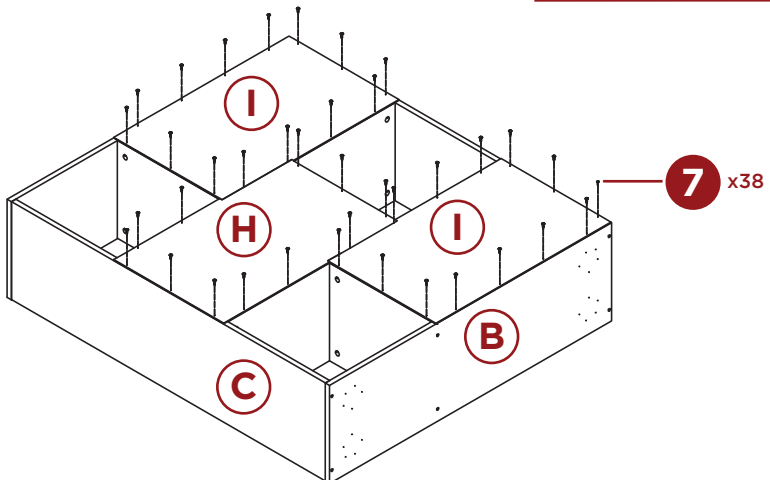


9

Flip the bookshelf assembly onto its front side, then attach two **part I back panels** with twenty-eight **part 7 screws**, fourteen screws per Back Panel. Attach one **part H back panel** with ten **part 7 screws**.



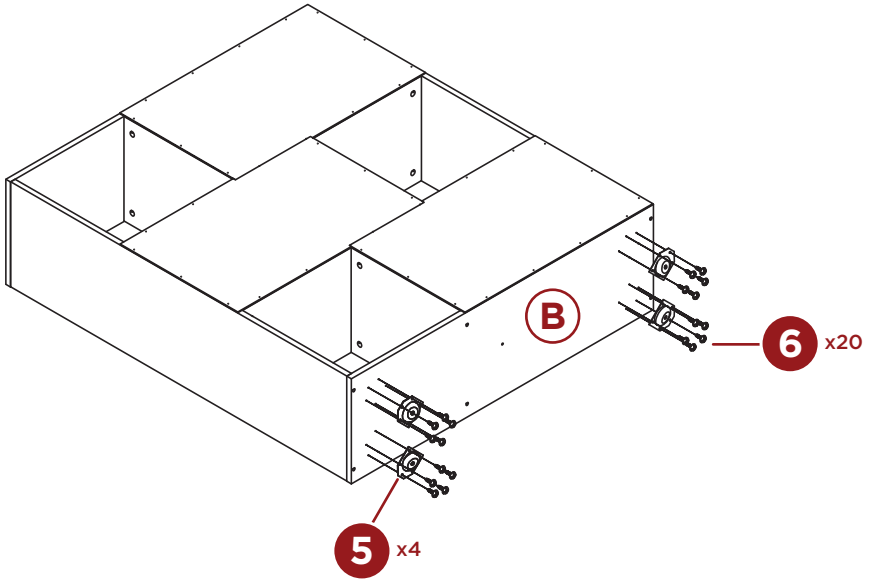
Use a screwdriver to turn the cam lock to secure the cam bolt.



PRODUCT ASSEMBLY

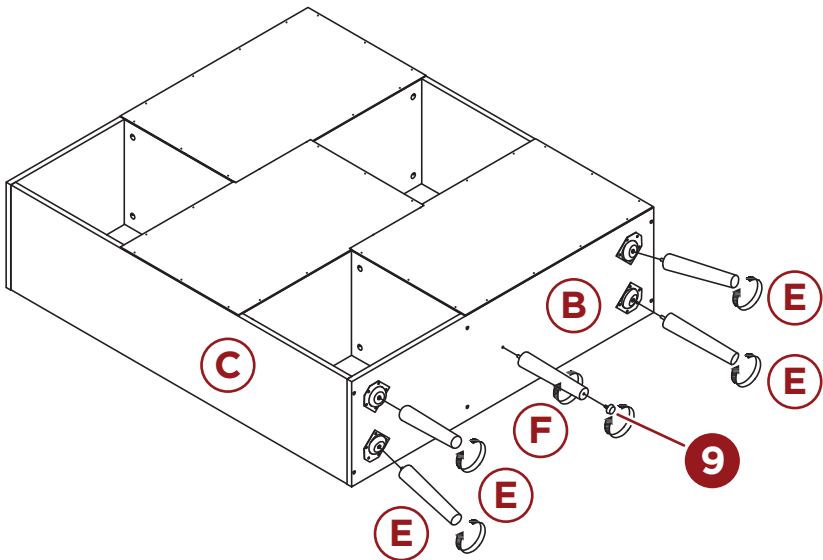
10

Attach four **part 5 leg mounting plates** to the **part B shelf bottom** with twenty **part 6 screws**, five screws per plate.



11

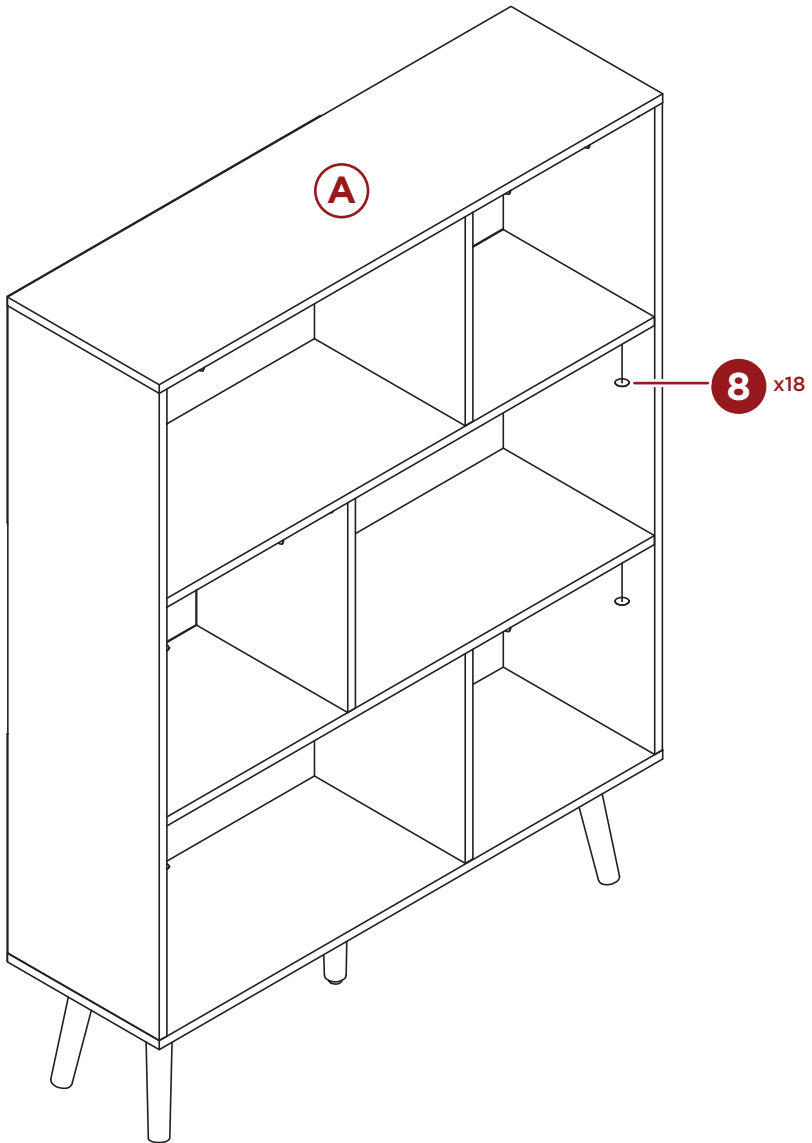
Screw one **part 9 foot elevator** into the bottom of one **part F leg**, then screw the leg into the **part B shelf bottom**. Screw four **part E legs** into the **part 5 leg mounting plates**.



PRODUCT ASSEMBLY

12

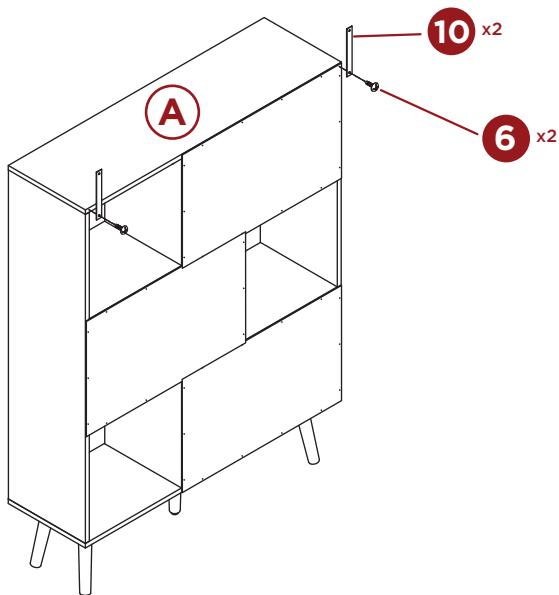
Stand the assembled bookshelf upright, then cover the cam locks with eighteen **part 8 stickers**.



WALL MOUNTING

1

Attach two **part 10 mounting straps** to the back corners of the **part A shelf top** with two **part 6 screws**.



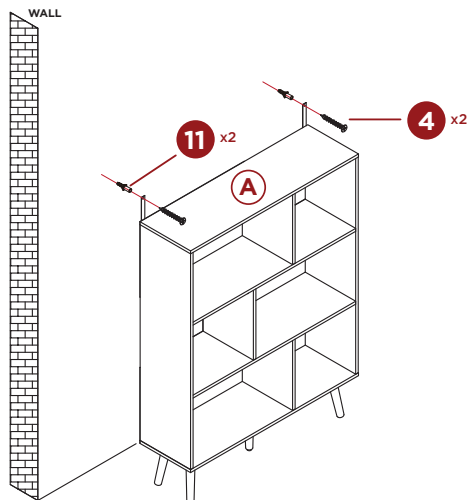
2

Place the assembled product in its intended space, abutting a wall. Stretch the straps to sit flat against the wall, then use a pencil to mark the wall, use the strap's pilot hole as a guide.

Use a power drill to make two pilot holes in the wall then insert two **part 11 wall anchors**.

Align the mounting straps with the wall anchors, then secure the strap with two **part 4 screws**.

Note: You may need to use different wall anchors/screws depending on your wall material.





HELP CENTER



Question about your product? We're here to help. Visit us at:

help.bestchoiceproducts.com



Chat Support



Product Inquiry



Orders FAQ



Product Assembly



Returns & Refunds

PRODUCT WARRANTY INFORMATION

All items can be returned for any reason within 60 days of the receipt and will receive a full refund as long as the item is returned in its original product packaging and all accessories from its original shipment are included. All returned items will receive a full refund back to the original payment method. All returned items will not be charged a re-stocking fee.

All returned items require an RA (Return Authorization) number, which can only be provided by a Best Choice Products Customer Service Representative when the return request is submitted. Items received without an RA may not be accepted or may increase your return processing time. Once an item has been received by Best Choice Products, refunds or replacements will be processed within 5 business days.

All returns must be shipped back to the Best Choice Products Return Center at the customer's expense. If the reason for return is a result of an error by Best Choice Products then Best Choice Products will provide a pre-paid shipping label via email. Boxes for return shipping will not be provided by Best Choice Products, and is the customer's responsibility to either use the original shipping boxes or purchase new boxes.

Pictures may be required for some returns to ensure an item is not damaged prior to its return. Items returned are not considered undamaged until they are received by Best Choice Products and verified as such. All damages to items are the customer's responsibility until the item has been received by and acknowledged by Best Choice Products as undamaged.

© 2023 Best Choice Products, Inc. All rights reserved. Distributed by Best Choice Products, Inc. Tustin, CA 92780

WARNING

Manufacturer and seller expressly disclaim any and all liability for personal injury, property damage or loss, whether direct, indirect, or incidental, resulting from the incorrect attachment, improper use, inadequate maintenance, unapproved modification, or neglect of this product.