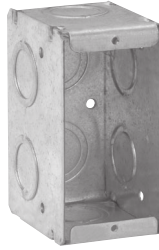


Steel Masonry Boxes

MASONRY BOXES

2 1/2" DEEP x 3 3/4" HIGH
1/2" & 3/4" CONCENTRIC KOs

UL LISTED



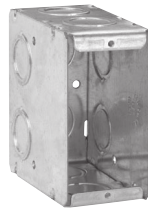
TP682

| Cat. # | Gang | Width | Knockouts | | | Capacity Cu. In. | Unit Qty. | Wt. Lbs. Per 100 |
|--------|------|----------|-----------|-----------|--------|---------------------|--------------|---------------------|
| | | | Each End | Each Side | Bottom | | | |
| TP682 | 1 | 1 15/16" | 1 | 2 | 2 | 15.5 | 20 | 70 |
| TP683 | 2 | 3 3/4" | 2 | 2 | 4 | 31.0 | 10 | 103 |
| TP684 | 3 | 5 9/16" | 3 | 2 | 6 | 46.5 | 5 | 129 |
| TP685 | 4 | 7 3/8" | 4 | 2 | 8 | 62.0 | 5 | 165 |
| TP686 | 5 | 9 3/16" | 5 | 2 | 10 | 77.5 | 5 | 189 |
| TP687 | 6 | 11" | 6 | 2 | 12 | 93.0 | 1 | 230 |

MASONRY BOXES

3 1/2" DEEP x 3 3/4" HIGH
1/2" & 3/4" CONCENTRIC KOs

UL LISTED



TP690



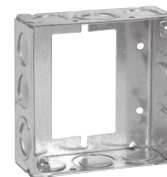
TP691

| Cat. # | Gang | Width | Knockouts | | | Capacity Cu. In. | Unit Qty. | Wt. Lbs. Per 100 |
|--------|------|----------|-----------|-----------|--------|---------------------|--------------|---------------------|
| | | | Each End | Each Side | Bottom | | | |
| TP690 | 1 | 1 15/16" | 2 | 2 | 2 | 22.0 | 20 | 84 |
| TP691 | 2 | 3 3/4" | 4 | 2 | 4 | 44.0 | 10 | 120 |
| TP692 | 3 | 5 9/16" | 6 | 2 | 6 | 66.5 | 10 | 155 |
| TP693 | 4 | 7 3/8" | 8 | 2 | 8 | 88.0 | 5 | 207 |
| TP694 | 5 | 9 3/16" | 10 | 2 | 10 | 110.0 | 5 | 235 |
| TP695 | 6 | 11" | 12 | 2 | 12 | 132.0 | 1 | 287 |

MASONRY BOX PARTITIONS & EXTENSION RING



TP820



TP422†

| Cat. # | Description | Unit Qty. | Wt. Lbs. Per 100 |
|-------------------------------|--|--------------|---------------------|
| Masonry Box Partitions | | | |
| TP820 | Non-metallic Partition for 2 1/2" Deep Masonry Boxes | 25 | 3 |
| TP821 | Non-metallic Partition for 3 1/2" Deep Masonry Boxes | 25 | 4 |

| Cat. # | Knockouts | | Unit Qty. | Wt. Lbs. Per 100 |
|--|-----------------------------|--------|--------------|---------------------|
| | Sides | Bottom | | |
| 1 1/2" Deep Switch & Masonry Box Extension Ring | | | | |
| TP422† | 8 - 1/2", 4 - 1/2" + 3/4" E | - | 50 | 50 |

†For use as extension with switch box, not four square box. See page 181 for 4" steel square covers.

Steel Masonry Boxes

GANGABLE MASONRY BOXES

UL LISTED

Features:

- The gangable feature allows the option of creating a multiple gang box from a single gang box by simply removing the combo head screw holding the side with a #2 bit and connecting the two (or more) boxes together re-using the screws
- Non-metallic partitions (ordered separately) install quickly and easily without tools in multi-gang boxes and are used to separate power and control circuits within the same box, as required by the National Electrical Code®



| Cat. # | Width | Knockouts | | | Capacity Cu. In. | Unit Qty. | Wt. Lbs. Per 100 |
|--|----------|-----------|-----------|--------|---------------------|--------------|---------------------|
| | | Each End | Each Side | Bottom | | | |
| 2 1/2" Deep x 3 3/4" High, 1/2" & 3/4" Concentric KOs | | | | | | | |
| TP671 | 1 15/16" | 2 | 2 | 2 | 15.5 | 20 | 63 |
| 3 1/2" Deep x 3 3/4" High, 1/2" & 3/4" Concentric KOs | | | | | | | |
| TP675 | 1 15/16" | 2 | 4 | 2 | 22.0 | 20 | 82 |

GANGABLE MASONRY BOX PARTITIONS



TP654

| Cat. # | Description | Unit Qty. | Wt. Lbs. Per 100 |
|--------|---|--------------|---------------------|
| TP654 | Non-metallic Partition for 2 1/2" Deep Gangable Masonry Boxes | 25 | 4 |
| TP656 | Non-metallic Partition for 3 1/2" Deep Gangable Masonry Boxes | 25 | 6 |

Steel Boxes