

USB to Bluetooth Adapter

USBBT1

StarTech.com

The Professionals' Source For Hard-to-Find Computer Parts



Thank you for purchasing a StarTech.com USB to Bluetooth adapter. Now you'll be able to create a short-range wireless personal area network (PAN) of up to 7 Bluetooth-enabled devices like PDAs, mobile phones or printers.

Features

- Compliant with Bluetooth 1.1 and USB 1.1
- Complies with Plug and Play specifications
- For low-power modes: Park, Sniff, Hold, and Deep Sleep
- Supports data transfer rates up to 721 Kbits/sec
- Wireless range of up to 50 ft (15m)
- 2.4 GHz- 2.4835GHz in unlicensed ISM band
- 4 dBm (Class 2) Bluetooth radio

Bluetooth Profile Support

- Generic access profile (GAP)
- Service discovery app profile (SDAP)
- Object push profile (OPP)
- Dial-up network profile (DUN)
- Fax profile (FAX)
- Serial port profile (SPP)
- Generic object exchange profile (GOEP)
- File transfer profile (FTP)
- LAN access profile (LAP)
- Active Sync

System Requirements

- A PC running Windows XP, 2000, Me, 98SE

Software Installation

NOTE: The USBBT1 will automatically uninstall any versions of Bluetooth that have been installed on your system. Do not physically install the device until you have installed the software.

You may be required to provide your Windows Installation disk during this procedure.

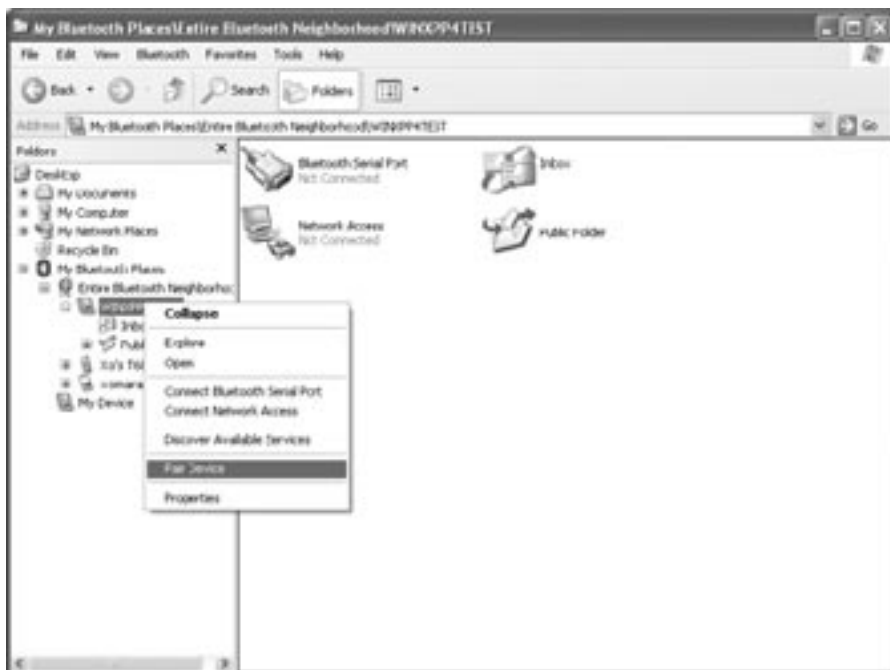
1. Exit all other applications and insert the driver disk into the disk drive.
2. Locate and click on the **setup.exe** file for the Bluetooth device.
3. At the Welcome screen, click **Next**.
4. Read the license agreement, click the "I accept the terms in the license agreement" box and click **Next**.
5. On the Device Information screen, enter a name for your PC in the Device Name field. This name will be how you identify your computer in your Bluetooth network. Then choose either **Desktop** or **Laptop** in the Device Type field and click **Next**.

NOTE: You can change the Device Name and Device Type after the installation process through the Bluetooth Configuration Panel.

6. On the Destination Folder screen, choose the location to install the software and click **Next**.
7. If you are happy with your installation settings, click **Install**.
8. Click **OK** at the Driver Signature Notice, then click **Finish**.
9. When prompted, choose to reboot your computer. Once your computer has rebooted, plug the USBBT1 into an open USB port. Choose to install the drivers automatically.

Using Your Bluetooth Device

In order to communicate with another Bluetooth device, you first have to pair them.



1. Once your USB BT1 is installed, you will see a small blue and white Bluetooth icon in your PC's taskbar. Double-click the icon.
2. Click on the Entire Bluetooth Network option. You will be able to see any available Bluetooth devices in range.
3. Right-click on the Bluetooth device you want to connect with. Choose **Pair Device** from the list of options.
4. A pop-up menu will appear with the name of the device. You will be prompted to enter a passkey (a combination of numbers/letters that serves as a password). Enter a passkey of your choosing and click **OK**.
5. On the second Bluetooth device (the device you wish to connect too), you will see a message indicating that a join request has been made. Enter the same passkey you entered in step 4 and click **OK**.
6. Your two Bluetooth devices are now joined and can communicate with each other. Paired devices will be marked with a checkmark in the My Bluetooth Neighborhood screen. The type of communication that can occur between devices depends on the type of Bluetooth device you are using. You can click on the paired device. Check the documentation that accompanies your other Bluetooth device for information on the type of actions it can perform.

The Configuration Utility

The Bluetooth Configuration Utility lets you view and configure information about your Bluetooth network.

To view the Configuration Utility, right-click on the Bluetooth icon in your taskbar, then choose **Setup**, then **Configuration**.

NOTE: The Configuration Utility provides a detailed Help section if you are encountering any problems with your Bluetooth network. From the Configuration Utility, click on the **Help** button for information.

You can use the Help utility if you are encountering any difficulties with the Configuration Utility, but some areas of interest are:

- The **General** tab lets you change your device's name or type.
- The **Information Exchange** tab lets you decide where you want networked files to be sent or saved.

Warranty Information

This product is backed by a one-year warranty. In addition, StarTech.com warrants its products against defects in materials and workmanship for the periods noted below, following the initial date of purchase. During this period, the products may be returned for repair, or replacement with equivalent products at our discretion. The warranty covers parts and labor costs only. StarTech.com does not warrant its products from defects or damages arising from misuse, abuse, alteration, or normal wear and tear.

Limitation of Liability

In no event shall the liability to StarTech.com Ltd. (or its officers, directors, employees or agents) for any damages (whether direct or indirect, special, punitive incidental, consequential, or otherwise), loss of profits, loss of business, or any pecuniary loss, arising out of related to the use of the product exceed the actual price paid for the product.

Some states do not allow the exclusion or limitation of incidental or consequential damages. If such laws apply, the limitations or exclusions contained in this statement may not apply to you.

Call StarTech.com tech support for help:

USA/Canada: 1-519-455-4931

UK/Ireland/Europe: 00-800-7827-8324

Support hours: Monday to Friday 9:00AM to 5:00PM EST (except holidays)