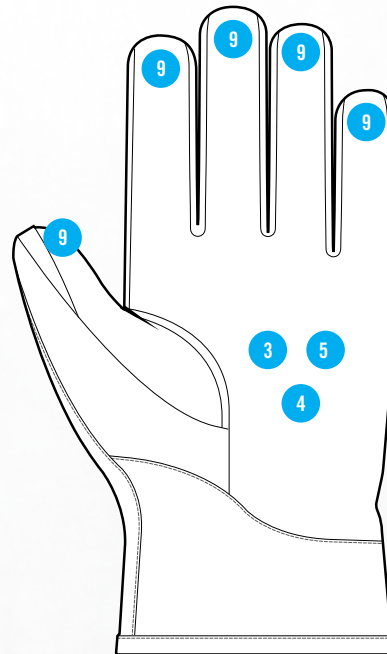
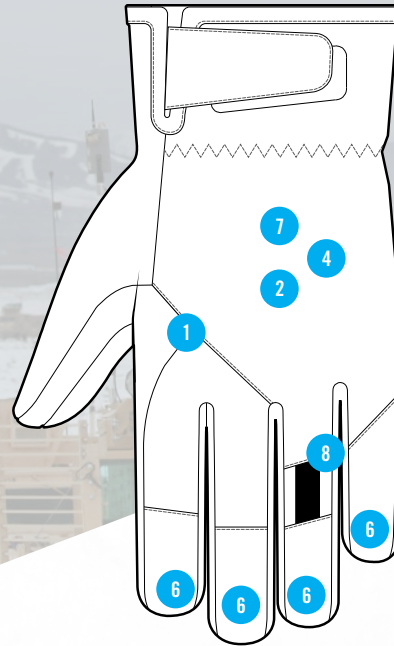




BERRY COMPLIANT CWGS INTERMEDIATE LAYER



USA
(800) 222-4296

Spain
+34 93 628 22 00

Canada
(877) 278-5822

Australia
1 300-731 336

Japan
03 4590 0066

MECHANIX WEAR LLC
www.mechanix.com



TACTICAL COLD WEATHER GLOVE SYSTEM

With a soft sweater-knit Polartec® Alpha® fleece liner, a waterproof breathable barrier, and Durahide™ Goat Leather Technology throughout the palm, this Intermediate Layer keeps you both comfortable and protected from all elements.

FEATURES

- 1 Multi-layer construction design delivers ultimate warmth and dryness.
- 2 Constructed with a waterproof membrane for ultimate protection from the elements.
- 3 Soft sweater-knit wool blended Polartec® Alpha® fleece insulation traps maximum warmth and moisture management.
- 4 Waterproof breathable barrier encapsulates entire glove.
- 5 FR and water resistant Durahide™ Goat Leather Technology throughout the palm.
- 6 Leather rollover fingertips for maximum durability and precision grip.
- 7 Nylon woven outer shell deflects snow.
- 8 Carabiner finger loop design secures gloves and reduces water and debris from entering the glove during storage.
- 9 Touch screen capable leather keeps you connected.



TOUCHSCREEN
TECHNOLOGY



DURAHIDE™ LEATHER
TECHNOLOGY

INTENDED USES

- Military
- Law Enforcement
- Shooting Sports
- Maintenance Repair Operations

SIZE	S-008	M-009	L-010	XL-011	XXL-012
COLOR	CWGSIM-B72 COYOTE				

BERRY COMPLIANT CWGS INTERMEDIATE LAYER

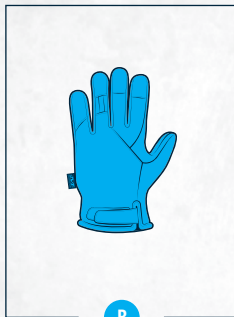
MULTI-LAYER INSULATION

The Mechanix Wear® Cold Weather Glove System utilizes a multi-glove design to easily provide highly adaptable, customizable protection against the full range of winter weather conditions.



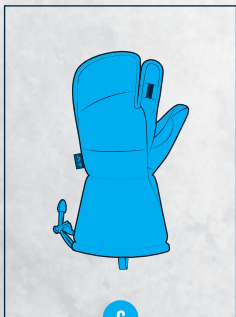
A

KNIT LINER



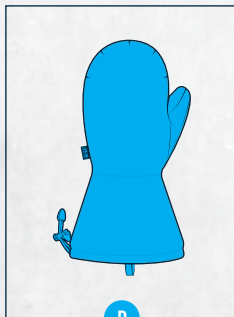
B

INTERMEDIATE LAYER



C

HEAVY INSULATION MITTEN



D

OUTER SHELL MITTEN

5 PAIRING OPTIONS AVAILABLE

Modularity / Configurable to Individual Needs

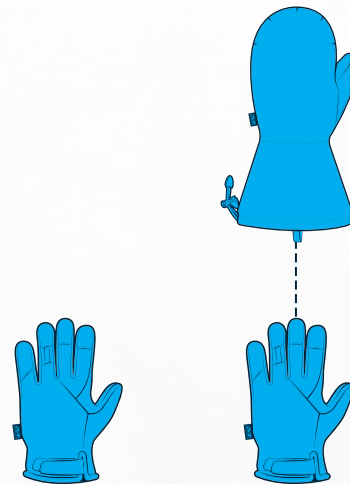
Designed to Meet the Requirements of the US Army From 40°F to -40°F

Moisture managing / Wicking Insulation

Water Resistant

INTERMEDIATE
COMBINATION

Up to **2 LAYERS** of insulation

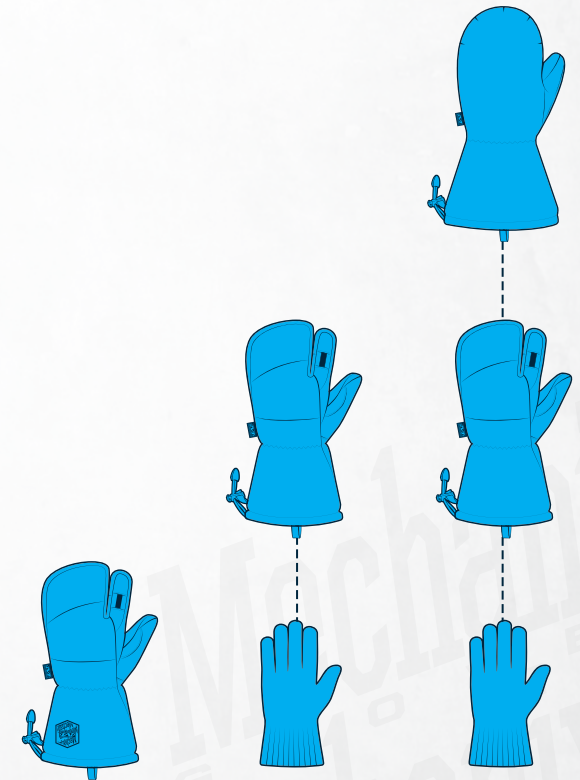


B

B D

HEAVY INSULATION
COMBINATION

Up to **3 LAYERS** of insulation



C

A C

A C D