



Diamond Tub & Showers Spec Sheet

Model: TSTN 603173 R/L (Right Shown)

Description: Tub/Shower Combo 1 Piece Unit

Specifications

Model #	Material	Wall Finish	Pieces	Drain	Apron Height	Net Weight Lbs.
TSTN 603173 R/L	Fiberglass/Gelcoat	Subway Tile	1	LH/RH	14"	

Sump Data

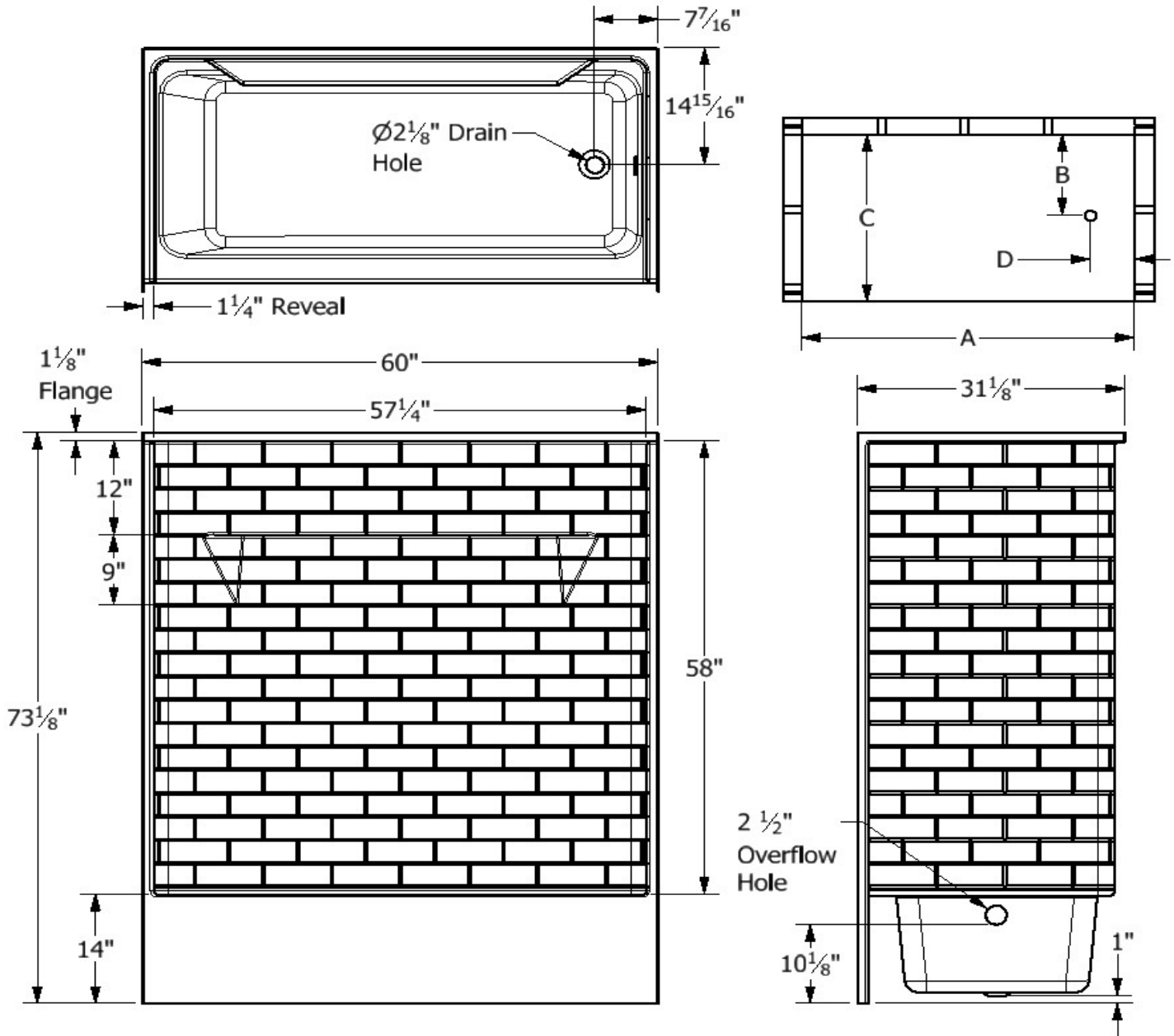
Top of Drain to Bottom of Overflow	Capacity to Overflow Gallons	Top Dimensions		Bottom Dimensions	
		Length	Width	Length	Width
10 1/8"	38.0	55"	23"	49"	21 3/8"

Framing Dimensions

A	B	C	D
60"	14 15/16"	7 7/16"	31 1/8"

Enclosure Opening

Width	Height
57 1/4"	58"



Certified to conform to ANSI Z124.1 and ASTM E-162 Flame Spread Rating 200 or less and is under a program of factory inspection.

Manufactured by Front Line Mfg., Inc. Warsaw, IN



8/27/20



Diamond Tub & Showers Spec Sheet

Model: TSTN 603175 R/L with Grab Bars(Left Shown)

Description: Subway Tile Tub/Shower Combo 1 Piece Unit

Specifications

Model #	Material	Wall Finish	Pieces	Drain	Apron Height	Net Weight Lbs.
TSTN 603175 R/L with Grab Bars	Fiberglass/Gelcoat	Subway Tile	1	LH/RH	16"	

Sump Data

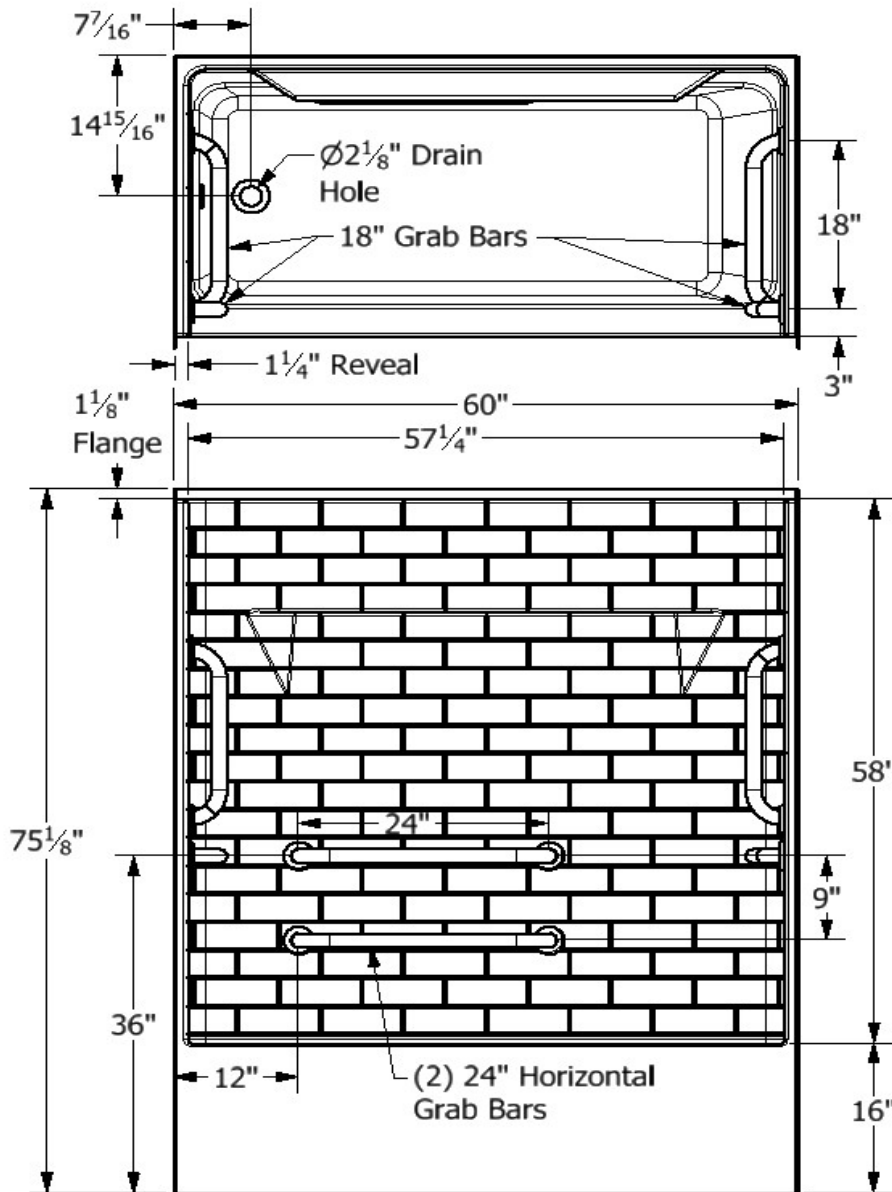
Top of Drain to Bottom of Overflow	Capacity to Bottom, of Overflow - Gallons	Top Dimensions		Bottom Dimensions	
		Length	Width	Length	Width
12 1/8"	38.0	55"	23"	49"	21 3/8"

Framing Dimensions

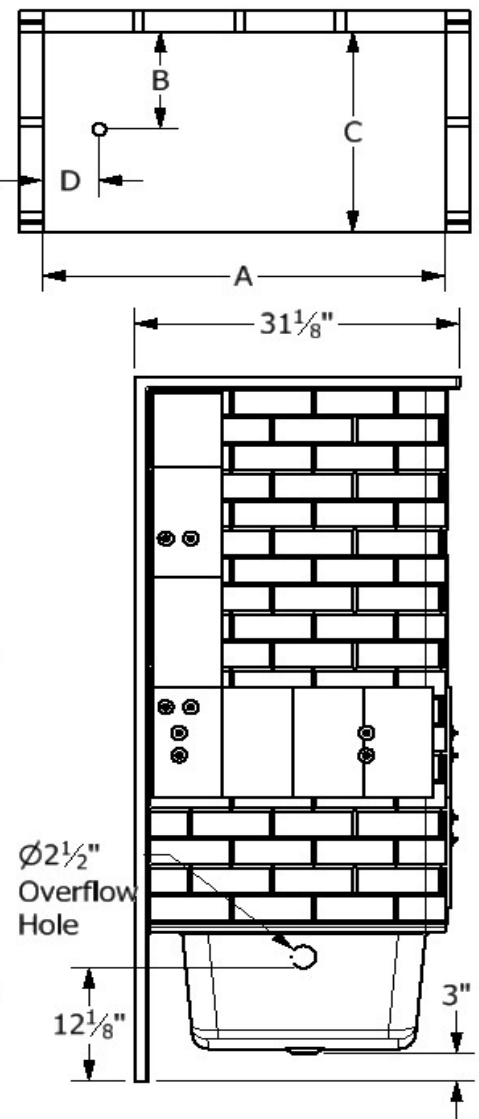
A	B	C	D
60"	14 15/16"	7 7/16"	31 1/8"

Enclosure Opening

Width	Height
57 3/4"	58"



Framing Specifications



Certified to conform to ANSI Z124.1 and ASTM E-162 Flame Spread Rating 200 or less and is under a program of factory inspection.

Manufactured by Front Line Mfg., Inc. Warsaw, IN



5/31/19