

Aimpoint®

A-CUT™ Mount plate - Micro™ interface conversion kit User manual



1 PRESENTATION

This Aimpoint® A-CUT™ Mount plate kit is designed to convert the A-CUT footprint into a Micro™ compatible platform.

1.1 Technical Specification

Size (L × W × H)

Mount plate	57 mm × 23 mm × 9,3 mm (2.2 in × 0.9 in × 0.4 in)
-------------	------------------------------------------------------

Weight

Mount plate (incl. wedge and screws)	18 g (0.6 oz)
--------------------------------------	---------------

COA R sight incl. Mount plate	66 g (2.3 oz)
-------------------------------	---------------

Materials

Mount plate and wedge	High strength aluminum, black to dark gray, non-glare finish
-----------------------	--------------------------------------------------------------

Height of optical center

Bottom of mount plate to optical center	18.9 mm (0.74 in)
-----------------------------------------	-------------------

1.2 Overview

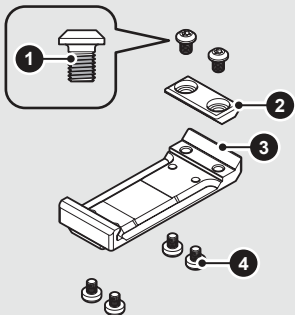


Fig. 1 Overview

- 1** Screws for wedge (2pcs) - with pre-applied thread locker
- 2** Wedge

- 3** A-CUT™ Mount plate
- 4** Screws for Micro™ mount (not included)

2 OPERATION

▲ WARNING

Make sure the weapon is unloaded and that the chamber is empty before attempting to install, remove or perform maintenance.

2.1 A-CUT™ Mount plate installation

For proper assembly of the A-CUT Mount plate onto the Micro™ mount base, the original screws supplied with the MICRO mount must be tightened by hand and with the Torx T10 tool.

▲ NOTE

Start with mounting the A-CUT Mount plate onto the MICRO base before installing the sight.

- a Place the A-CUT mount plate upside down in your hand.
- b Press the MICRO mount base against the A-CUT mount plate and verify there is no gap.

- a Apply thread locking fluid (Loctite 222 or equivalent) to the threads and install the screws (4).
- b Tighten the screws (4) in a crosswise pattern. Tighten until resistance is encountered. Proceed with another 1/4 to 1/2 turn until fully tightened (1.35 Nm / 1.0 ft·lb). No screws may protrude.

▲ CAUTION

Do not overtighten.

2.2 COA™ R sight installation

To install the COA R sight onto the A-CUT™ Mount plate (3):

- a Tilt the sight so that the front protruding part can be inserted into the slot on the A-CUT Mount plate (1 / Fig. 2). The sight will interface with the Aimpoint A-CUT on the mount plate and center itself.

▲ NOTE

Make sure to mount the sight in the right direction.

▲ NOTE

Make sure the sight is centered and sits flat on the A-CUT™ mount plate.

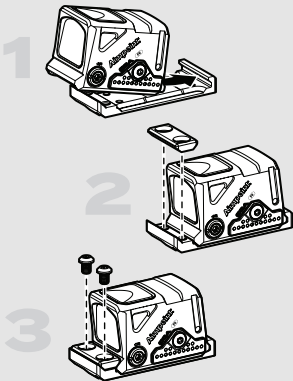


Fig. 2 COA™ R sight installation

- a Place the wedge (2) onto the mount plate so that the holes in the wedge line up with the holes in the mount plate (2 / Fig. 2).
- b Mount the screws(1) through the wedge into the mount plate (3 / Fig. 2). Alternately tighten the screws to 2 Nm (17.7 in. lbs). Make sure to use only these screws for attaching the wedge.

▲ NOTE

Ensure that the threads are clean so that the pre-applied thread locker on the wedge screws (1) works properly.

- c Check the sight for a tight fit without any play. Let the pre-applied thread locking harden for at least 6 hours before using the sight on a weapon.

▲ NOTE

The pre-applied thread locker is one time use only. If disassembled, new thread locking fluid (Precote 80 or equivalent) must be applied to the screws (1).

Aimpoint AB

Jägershillgatan 15
SE- 213 75 Malmö, Sweden
Phone: +46 (0)40 671 50 20
Fax: +46 (0)40 21 92 38
e-mail: info@aimpoint.se

Aimpoint Inc.

7309 Gateway Court
Manassas, VA 20109, USA
Phone: +1 703-263-9795
Fax: +1 703-263-9463
e-mail: info@aimpoint.com

WWW.AIMPOINT.COM

© 2026 Aimpoint AB. [PA000918-01]

