



SK2660
Kitchen Faucet
Operation & Maintenance Manual



Model Numbers

- ☐ **SK2660** Kitchen Faucet, p/n KN-328

Feature Highlights

- Single Handle Kitchen Faucet with single hole mount
- Lever handle with chrome inserts and quarter turn ceramic control components
- Swivel spout
- Aerator with 1.5 gpm flow rate (5.7 L/min)
- Optional lower flow rate restrictor available
- Metal construction
- Polished chrome standard finish

Compliance

- ASME A112.18.1/CSA B125.1
- NSF/ANSI/CAN 61: Q<1, NSF/ANSI 372

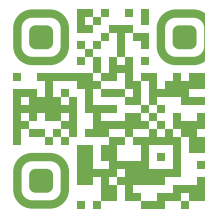


⚠ WARNING: This product can expose you to chemicals including lead, which is known to the state of California to cause cancer, birth defects, or other reproductive harm. For more information, go to www.P65Warnings.ca.gov.

Warranty

Limited Lifetime - to the original end purchaser in consumer/residential installations.

10 Years - for commercial/industrial installations. Refer to www.symmons.com/warranty for complete warranty information.

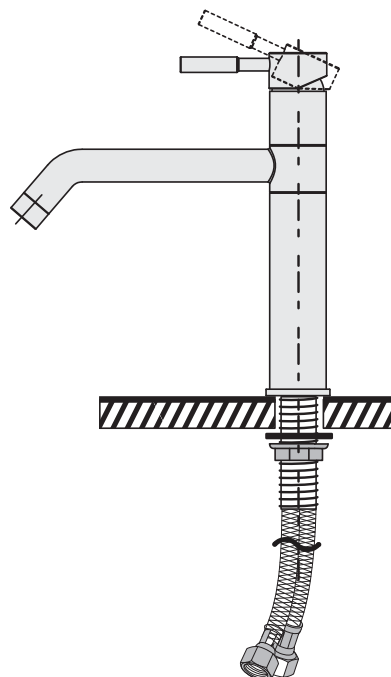
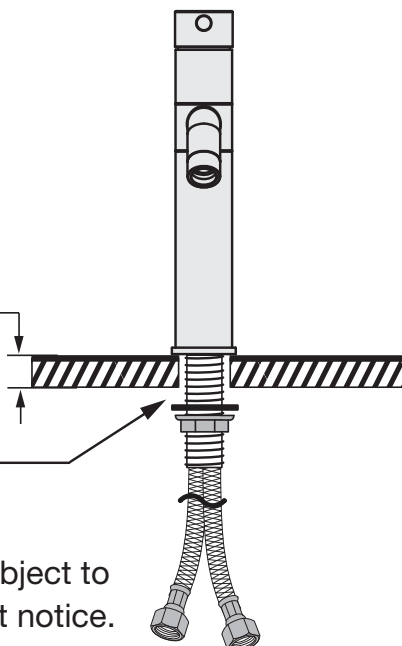


Dimensions

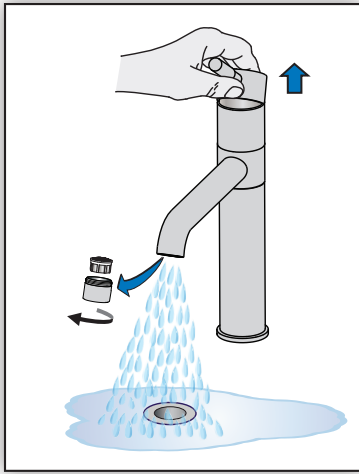
Deck thickness
1-1/2" (38 mm) max

Hole size
1-3/8" (35 mm) min
1-1/2" (38 mm) max

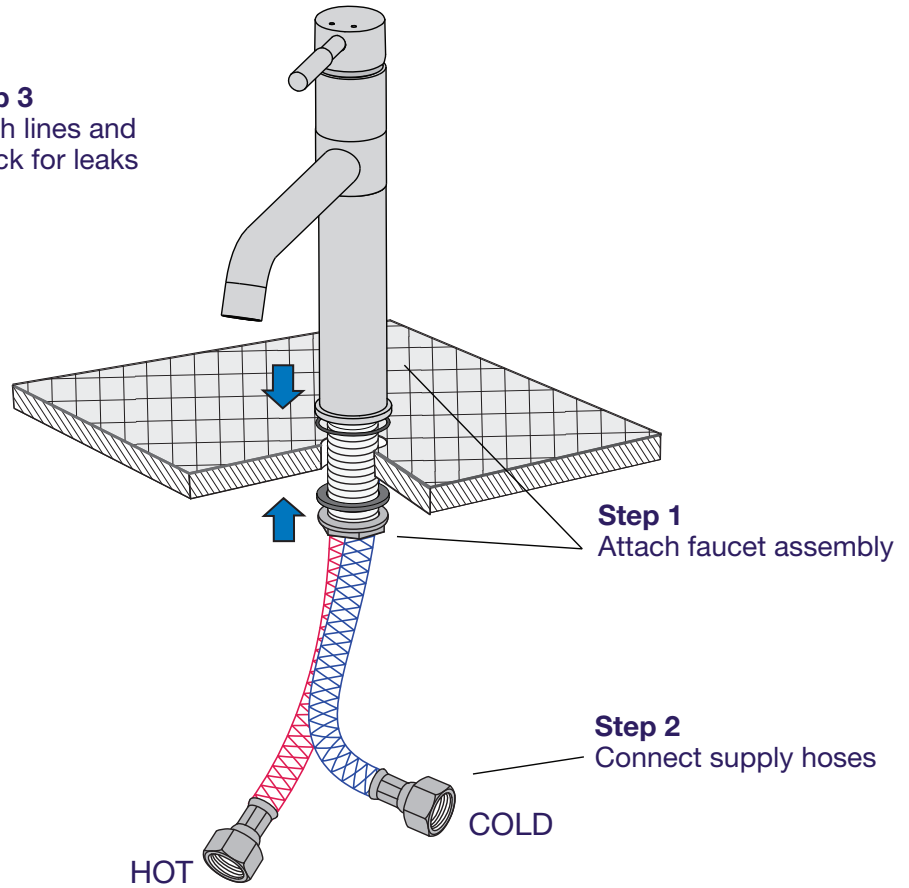
Note: Dimensions subject to change without notice.



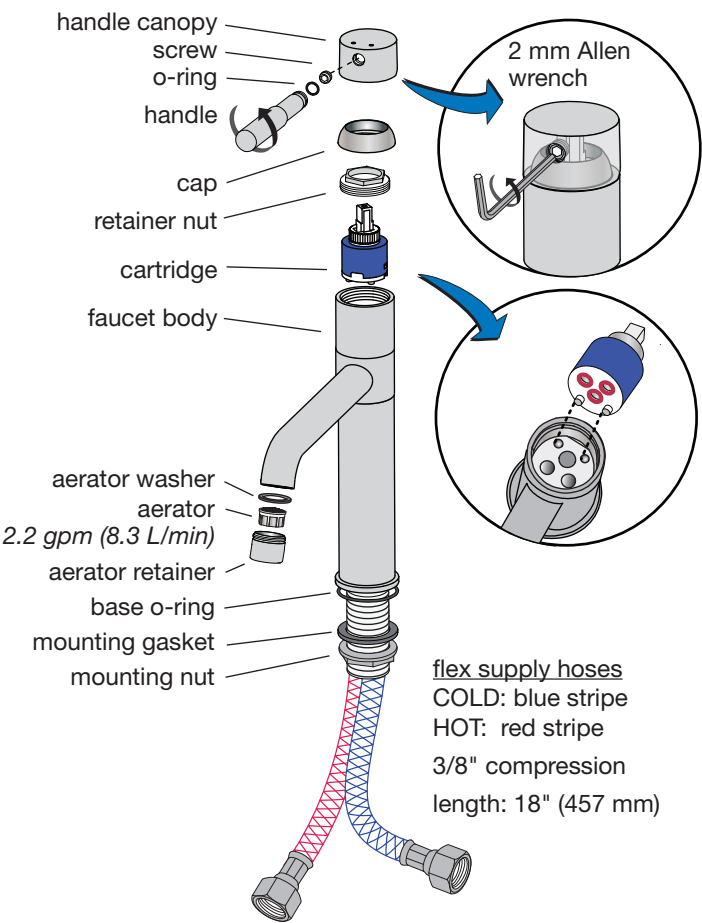
Installation



Step 3
Flush lines and
check for leaks



Parts Breakdown



Replacement Parts	
Part Number	Item
KN-4	Cartridge
RK-023-2.2	2.2 gpm (8.3 L/min)
RK-023-1.5	1.5 gpm (5.7 L/min)
RK-023-1.0	1.0 gpm (3.8 L/min)

Ordering replacement parts:
Call Symmons customer service at (800) 796-6667, M-F 7:30 am - 7:00 pm EST or check our website at www.symmons.com for a list of Symmons distributors.

* Note: For decorative finish faucets append the appropriate suffix code letters to part numbers marked with an asterisk (*)

