



BEST CHOICE  
PRODUCTS



# INSTRUCTION MANUAL

---

Pretend Play Vanity Set

## WARNING

**CHOKING HAZARD** - Small parts.  
Not for children under 3 years old.

## WARNING

**ADULT ASSEMBLY REQUIRED**

### NOTICE

Please retain these instructions for future reference.

- This product requires adult assembly and supervision when in use.
- This product is intended for indoor use only.
- Do not stand on or use any part of this item as a step ladder.
- Firmly secure all bolts, screws, and knobs before use.
- Reconfirm that all bolts, screws, and knobs are secure every 90 days.
- Do not use or store this item in the proximity of open flame or flammable/combustible chemicals.
- If any parts are missing, broken, damaged, or worn, stop using this item until repairs are made and/or factory replacement parts are installed.
- Do not use this item in a way inconsistent with the manufacturer's instructions as this could void the product warranty.
- This product contains small parts. May result in choking hazard for children under 3 years.
- To wipe down item, use a damp cloth. Then, wipe it down once more with a dry cloth.
- This product is intended for residential use only.

## TOOLS REQUIRED



**PHILLIPS  
SCREWDRIVER  
(NOT PROVIDED)**



**3 YEARS  
OLD AND UP**

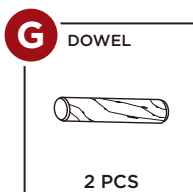
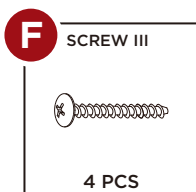
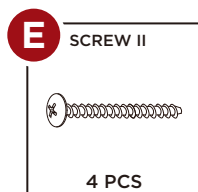
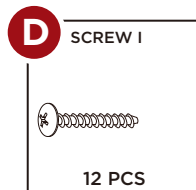
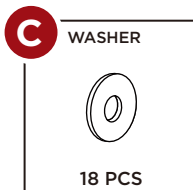
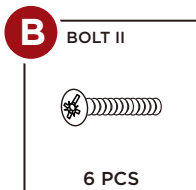
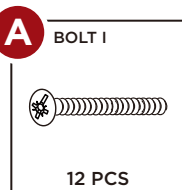


**1 PERSON  
ASSEMBLY**



**UP TO 45 MIN.  
ASSEMBLY**

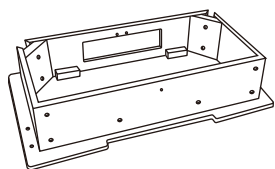
## HARDWARE



## PARTS

1

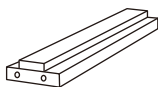
TABLETOP



1 PC

2

TABLE CENTER  
SUPPORT



1 PC

3

TABLE FRONT LEG



2 PCS

4

TABLE BACK LEG



2 PCS

5

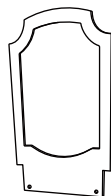
MIRROR SUPPORT



1 PC

6

MIRROR



1 PC

7

SMALL DRAWER  
HOUSING



2 PCS

8

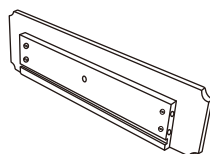
DRAWER KNOB



1 PC

9

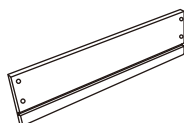
DRAWER FRONT



1 PC

10

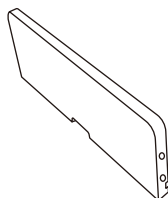
DRAWER SIDE



2 PCS

11

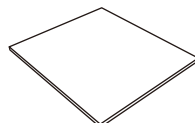
DRAWER BACK



1 PC

12

DRAWER BOTTOM

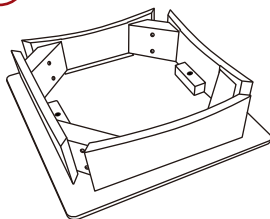


1 PC

## PARTS

13

SEAT



1 PC

14

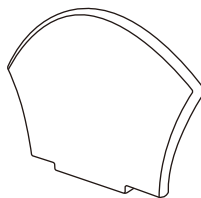
CHAIR LEG



4 PCS

15

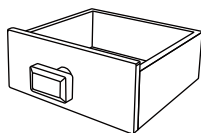
BACKREST



1 PC

16

SMALL DRAWER

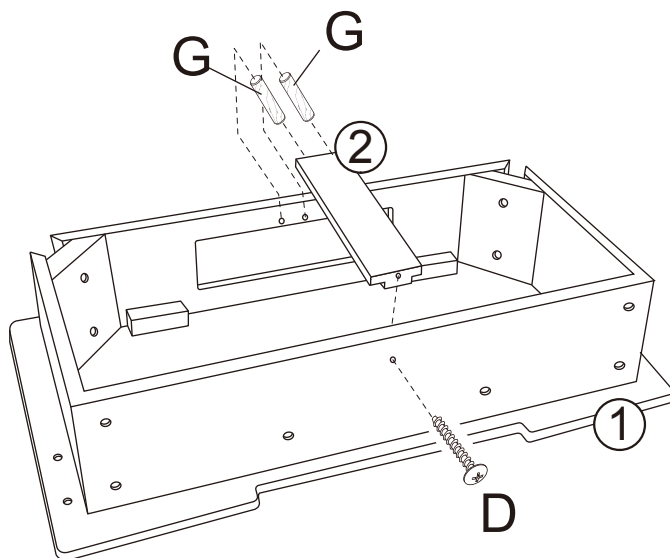


2 PCS

## PRODUCT ASSEMBLY

1

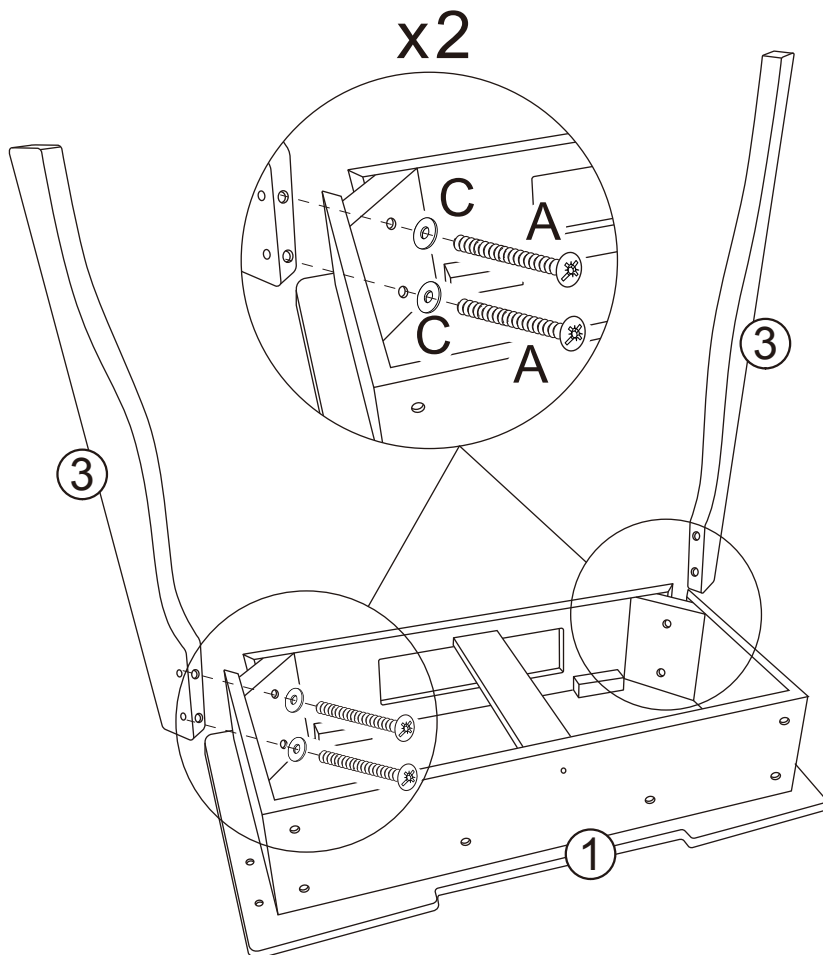
Attach the **part 2 table center support** to the **part 1 tabletop** with two **part G dowels** and one **part D screw**.



## PRODUCT ASSEMBLY

2

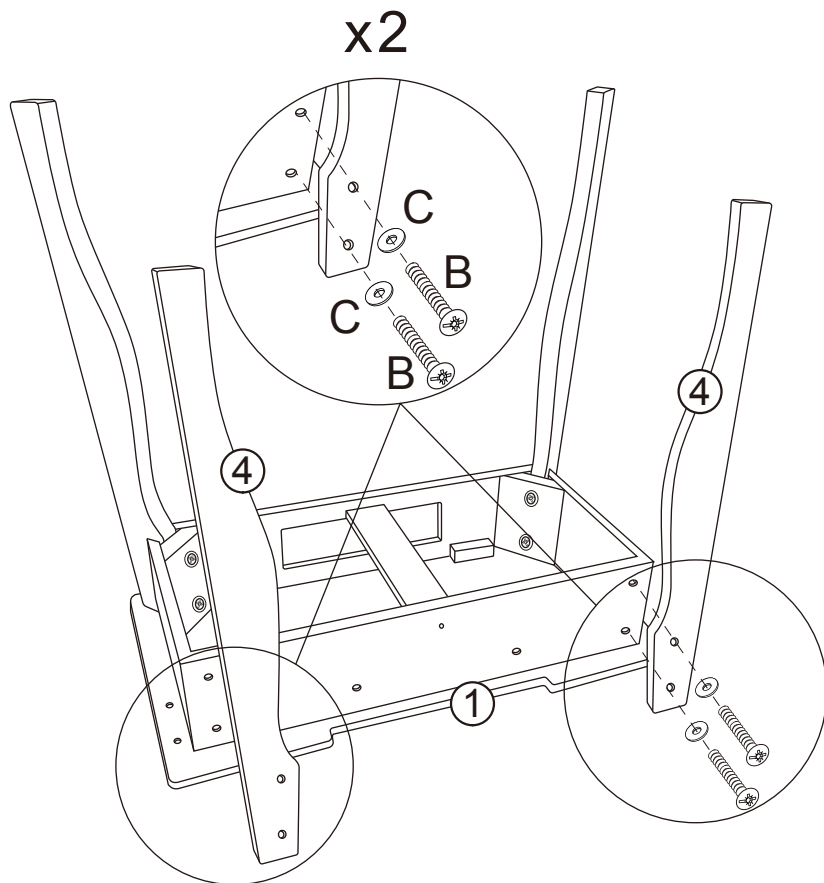
Attach two **part 3 table front leg** with two **part C washers** and two **part A bolt**, two bolts and two washers per leg.



## PRODUCT ASSEMBLY

3

Attach two **part 4 table back leg** with two **part C washers** and two **part B bolt**, two bolts and two washers per leg.

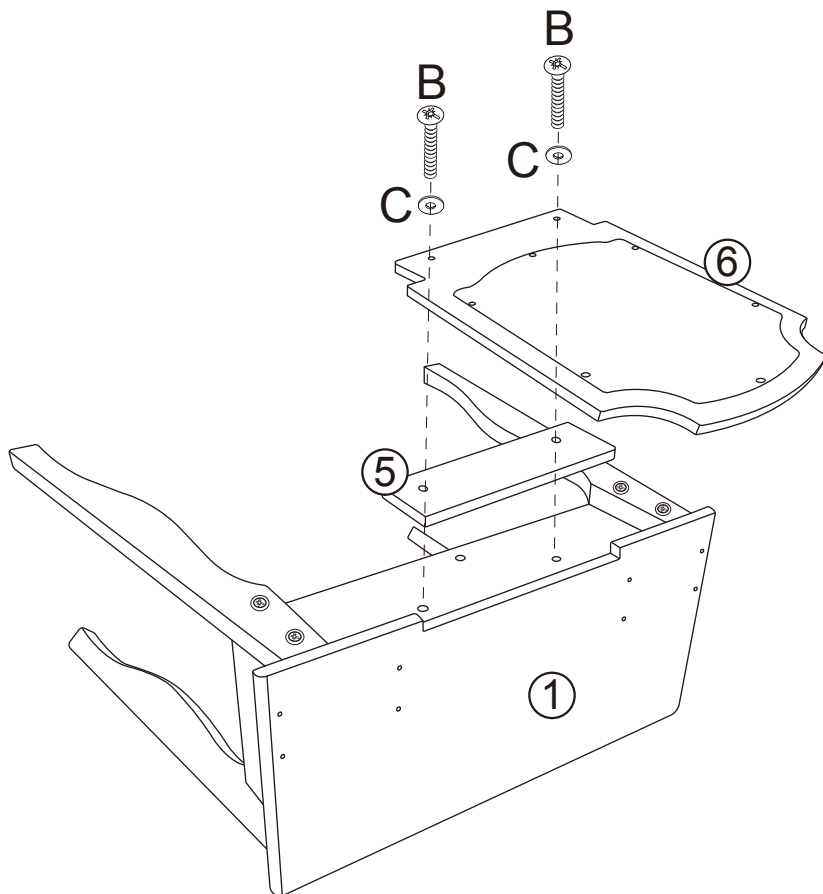


## PRODUCT ASSEMBLY

4

Place the **part 5 mirror support** on the back of the **part 1 tabletop**, and then overlap it with the **part 6 mirror**.

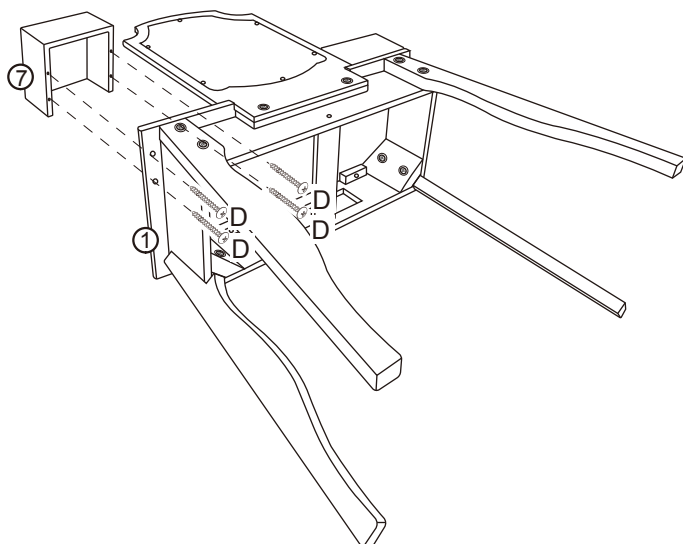
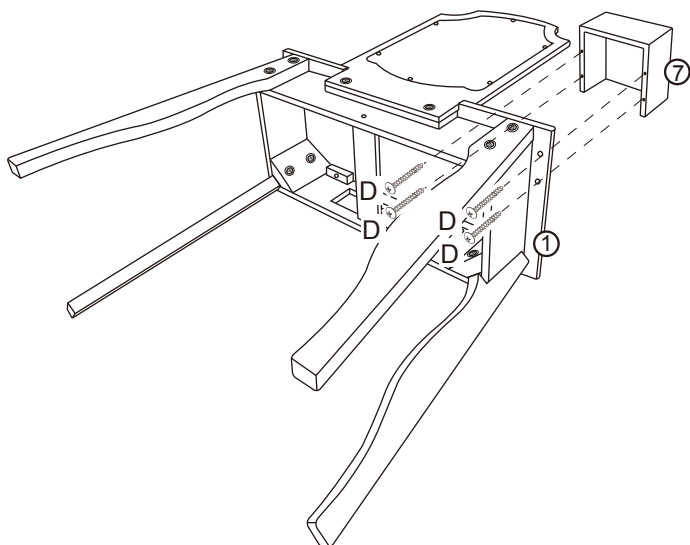
Secure the connection with two **part C washers** and two **part B bolts**.



## PRODUCT ASSEMBLY

5

Attach two **part 7** small drawer housings with **eight part D screws**, four screws per housing.





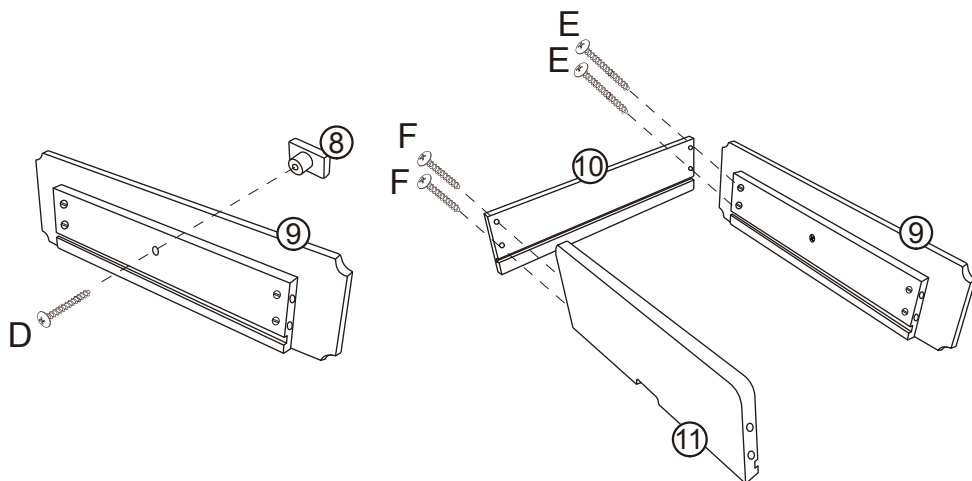
## PRODUCT ASSEMBLY

6

Attach the **part 8 drawer knob** to the **part 9 drawer front** with one **part D** screws.

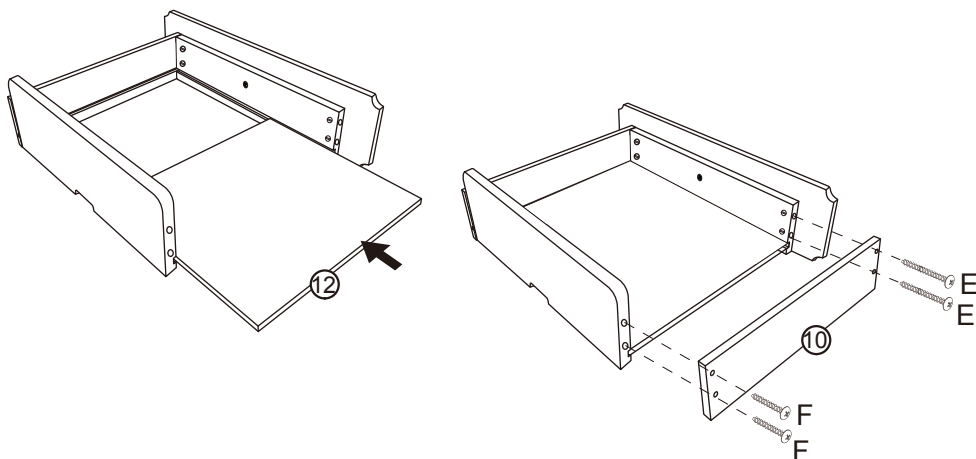
Attach one **part 10 drawer side** to the **part 9 drawer front** with two **part E** screws.

Attach the **part 11 drawer back** to the **part 10 drawer side** with two **part F** screws.



7

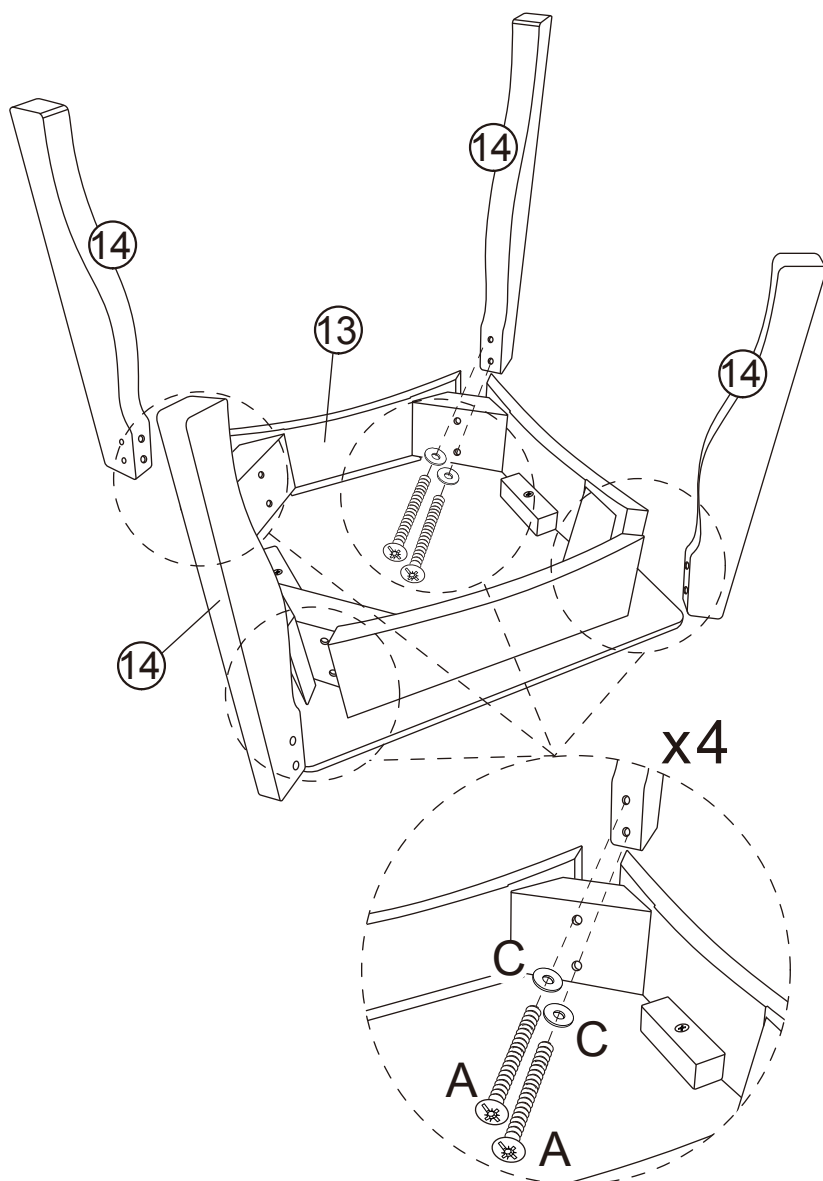
Slide in the **part 12 drawer bottom** then attach another **part 10 drawer side** to the **part 9 drawer front** and **part 11 drawer back** with two **part E** and two **part F** screws.



## PRODUCT ASSEMBLY

8

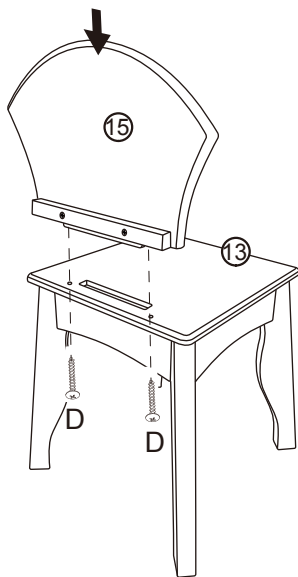
Attach four **part 14 chair legs** to the **part 13 seat** with eight **part C washers** and eight **part A bolts**, two bolts and two washers per leg.



## PRODUCT ASSEMBLY

9

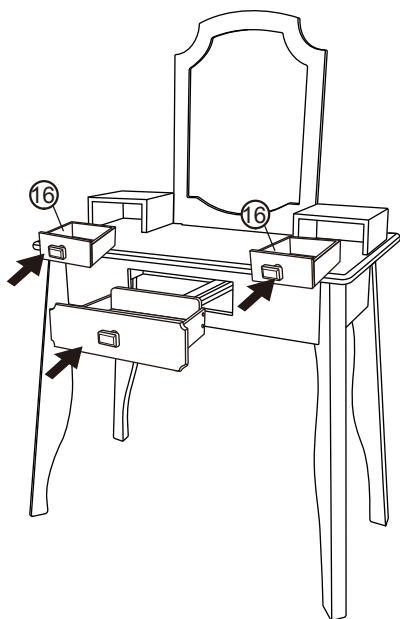
Attach the **part 15 backrest** to the **part 13 seat** with two **part D screws**.



10

Slide in the assembled drawer into the table.

Slide two **part 16 small drawers** into **part 7 drawer housings**.





# HELP CENTER



Question about your product? We're here to help. Visit us at:

[help.bestchoiceproducts.com](http://help.bestchoiceproducts.com)



Chat Support



Product Inquiry



Orders FAQ



Product Assembly



Returns & Refunds

## PRODUCT WARRANTY INFORMATION

All items can be returned for any reason within 60 days of the receipt and will receive a full refund as long as the item is returned in its original product packaging and all accessories from its original shipment are included. All returned items will receive a full refund back to the original payment method. All returned items will not be charged a re-stocking fee.

All returned items require an RA (Return Authorization) number, which can only be provided by a Best Choice Products Customer Service Representative when the return request is submitted. Items received without an RA may not be accepted or may increase your return processing time. Once an item has been received by Best Choice Products, refunds or replacements will be processed within 5 business days.

All returns must be shipped back to the Best Choice Products Return Center at the customer's expense. If the reason for return is a result of an error by Best Choice Products then Best Choice Products will provide a pre-paid shipping label via email. Boxes for return shipping will not be provided by Best Choice Products, and is the customer's responsibility to either use the original shipping boxes or purchase new boxes.

Pictures may be required for some returns to ensure an item is not damaged prior to its return. Items returned are not considered undamaged until they are received by Best Choice Products and verified as such. All damages to items are the customer's responsibility until the item has been received by and acknowledge by Best Choice Products as undamaged.

© Best Choice Products, Inc. All rights reserved. Distributed by Best Choice Products, Inc. Newport Beach, CA 92660



## WARNING

Manufacturer and seller expressly disclaim any and all liability for personal injury, property damage or loss, whether direct, indirect, or incidental, resulting from the incorrect attachment, improper use, inadequate maintenance, unapproved modification, or neglect of this product.