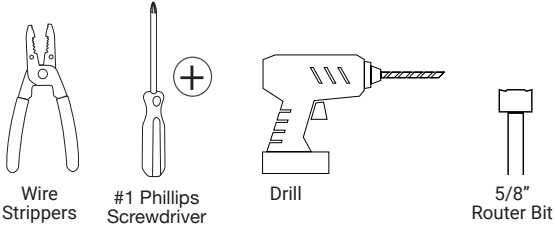


NOTE

- **DO NOT** connect low-voltage LED tape light to high-voltage power.
- Do not over tighten any screws.
- Maintain polarity on all connections, Red wire to (+ or DC12V or DC24V) and Black wire to (- or GND).

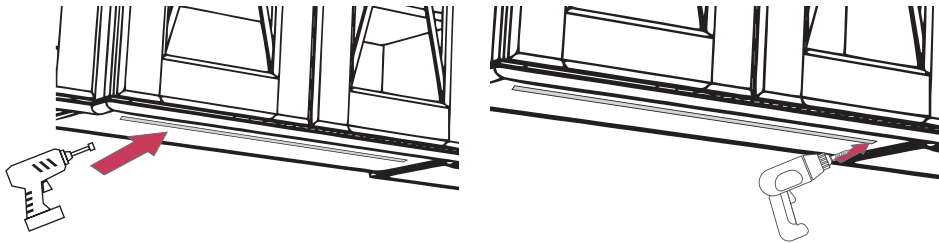
Tools Needed



Product Legend



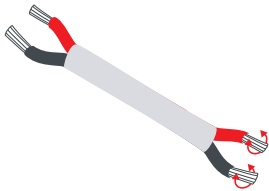
Step 1. Route a Groove for the Fixture



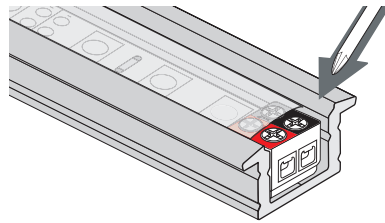
1. Using a 5/8" router bit, hollow out a groove (the length of the fixture) from cabinet or shelf bottom where the fixture will go.

2. Drill a 1/4" hole at either end of the groove to run wire through.

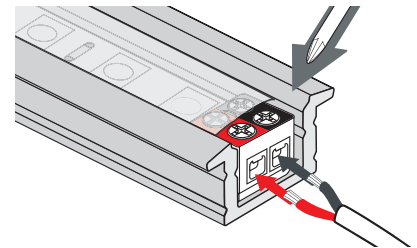
Step 2. Connecting Single Color Recessed Linear Fixture to the 8MM EZ Connector on the Fixture



1. Use wire strippers to strip wire 1/4", then twist ends. **NOTE: wires may be folded over after being twisted, but it is not required.**

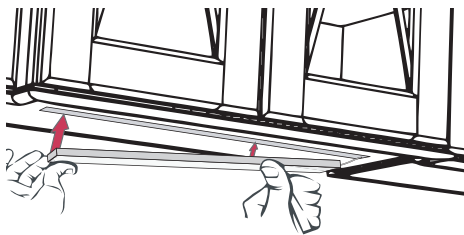


2. Leave frosted lens on the fixture. Use #1 Philips to loosen the 2 outer terminal screws on the 8MM-EZ Connector. **NOTE: DO NOT loosen the two inner terminal screws.**



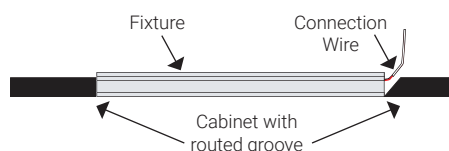
3. Run wires through pre-drilled hole at either end of the groove. Insert stripped wires from power supply or receiver into outer terminals, Red wire to (+ or DC12V) side marked in red, Black wire to (- or GND) side of tape marked in black; tighten screws.

Step 3. Insert Fixture into Groove

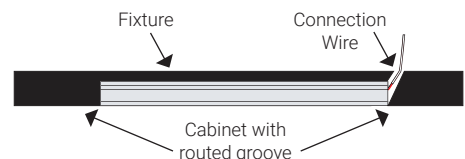


1. Insert fixture up into the groove. Fixture will fit tight. Press along the length of the fixture to ensure fixture is secure in groove.

Wiring for when fixture is thicker than substrate.



Wiring for when substrate is thicker than fixture.

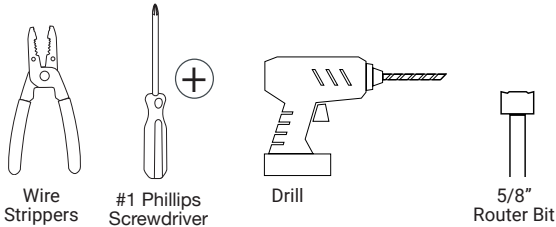


Follow instructions included in receiver or controller to properly hook up single color 8MM tape light system.

NOTE

- **DO NOT** connect low-voltage LED tape light to high-voltage power.
- Do not over tighten any screws.
- Maintain polarity on all connections, Red wire to (WW+) and Black wire to (CW-).

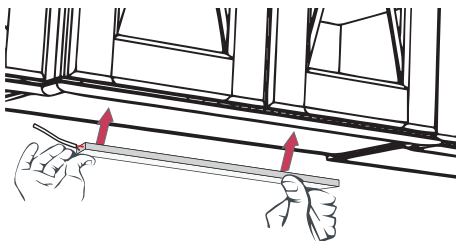
Tools Needed



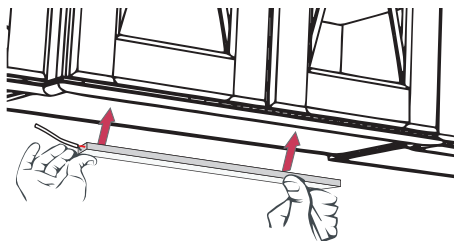
Product Legend



Step 1. Route a Groove for the Fixture

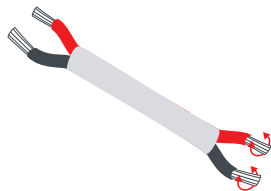


1. Using a 5/8" router bit, hollow out a groove (the length of the fixture) from cabinet or shelf bottom where the fixture will go.

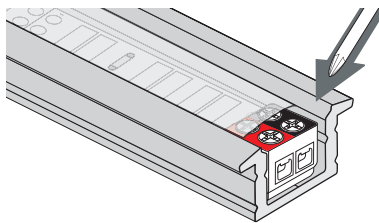


2. Drill a 1/4" hole at either end of the groove to run wire through.

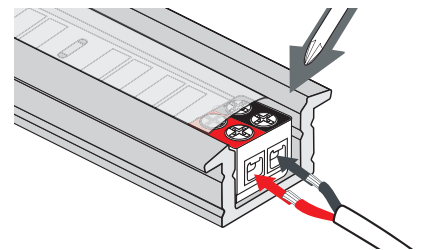
Step 2. Connecting TandemLED Recessed Linear Fixture to the 8MM EZ Connector on the Fixture



1. Use wire strippers to strip wire 1/4", then twist ends. **NOTE: wires may be folded over after being twisted, but it is not required.**

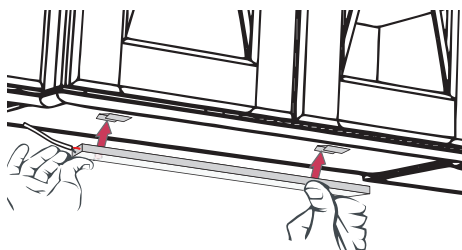


2. Leave frosted lens on the fixture. Use #1 Philips to loosen the 2 outer terminal screws on the 8MM-EZ Connector. **NOTE: DO NOT loosen the two inner terminal screws.**



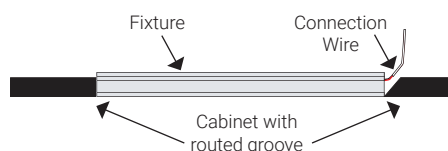
3. Run wires through pre-drilled hole at either end of the groove. Insert stripped wires from power supply or receiver into outer terminals, Red wire to (WW+) side marked in red, Black wire to (CW-) side of tape marked in black; tighten screws.

Step 3. Insert Fixture into Groove

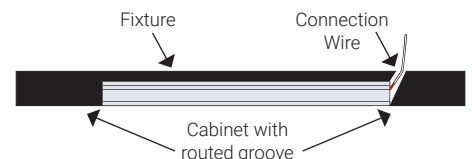


1. Insert fixture up into the groove. Fixture will fit tight. Press along the length of the fixture to ensure fixture is secure in groove.

Wiring for when fixture is thicker than substrate.



Wiring for when substrate is thicker than fixture.



Follow instructions included in receiver or controller to properly hook up TandemLED tape light system.