



TECHNICAL INFORMATION



V3 Moderate Variation



Ready Ship



Recommend offset pattern $\leq 33\%$



DCOF: ≥ 0.42



Made in USA

COLORS



Noble Platinum CRV NVMO 1



Nickel Plate CRV NVMO 2



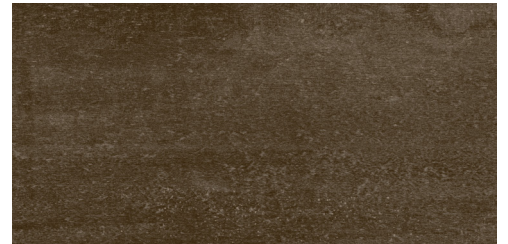
Crucible Steel CRV NVMO 3



Copper Deposit CRV NVMO 4



Cobalt Ore CRV NVMO 5



Graphite Black CRV NVMO 6

MOSAIC AND DECOS



Noble Platinum with Gold Mixed Hex Mosaic CRV NVMO 1HEXG



Noble Platinum with Iron Mixed Hex Mosaic CRV NVMO 1HEXI



Nickel Plate with Iron Mixed Hex Mosaic CRV NVMO 2HEXI



Crucible Steel with Iron Mixed Hex Mosaic CRV NVMO 3HEXI



Copper Deposit with Gold Mixed Hex Mosaic CRV NVMO 4HEXG



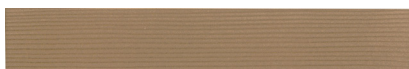
Copper Deposit with Iron Mixed Hex Mosaic CRV NVMO 4HEXI



Cobalt Ore with Iron Mixed Hex Mosaic CRV NVMO 5HEXI



Graphite Black with Iron Mixed Hex Mosaic CRV NVMO 6HEXI



Champagne Gold CRV NVMC GMOLT212



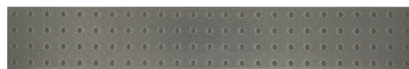
White Iron CRV NVMW IMOLT212



Rubbed Bronze CRV NVMR BMOLT212



Champagne Gold CRV NVMC GPERF212



White Iron CRV NVMW IPERF212



Rubbed Bronze CRV NVMR BPERF212



Tiles, Mosaic and Trim*

SIZE	ACTUAL	THICKNESS	FINISH
24" x 48" Rectified	23.5" x 47.12"	10.5mm	Matte
24" x 24" Rectified	23.5" x 23.5"	9.5mm	Matte
12" x 24" Rectified	11.69" x 23.5"	9.5mm	Matte
2" x 2" Mosaic	11.73" x 11.73" (sheet size)	9.5mm	Matte
10" x 11" Mixed Hex Mosaic	10.19" x 10.62" (sheet size)	9.5mm	Mixed
2" x 12" Molten Deco	1.85" x 11.69"	9.5mm	Satin
2" x 12 Perforated Deco	1.85" x 11.69"	9.5mm	Satin
4" x 24" Bullnose	3.77" x 23.5"	9.5mm	Matte
6" x 12" Cove Base	5.9" x 11.69"	9.5mm	Matte

* Not all sizes are available in all colors and finishes

Application**

		Matte		Mixed & Satin	
		WALL	FLOOR	WALL	FLOOR
Interior	Residential	•	•	•	
Interior	Commercial	•	•	•	
Interior	Heavy Commercial	•		•	
Exterior	Residential/Commercial	•			

** These recommendations are not defined by ANSI Standards

Performance Characteristics

Breaking Strength	≥450 lbf
Chemical Resistance	Resistant
DCOF	≥0.42
Deep Scratch Resistance - Unglazed	Not Applicable
Frost Resistance	Resistant
Mohs Hardness - EN101	7
PEI Rating	Not Applicable
Water Absorption	<0.50%
Certifications	Green Squared
Shade Variation Code	v3

