

RGB Wireless Controller
T-C-RGBWC-RF-WT

Battery Warnings & Safety

Warnings and Statements:

This product contains a CR Coin Cell Lithium Battery and meets the requirements of **16 CFR Part 1263**. For your safety and to ensure proper operation, please carefully read and understand the following warnings and statements.

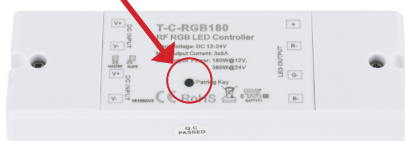
⚠ WARNING

- **INGESTION HAZARD:** This product contains a button cell or coin battery.
- **DEATH** or serious injury can occur if ingested.
- A swallowed button cell or coin battery can cause **Internal Chemical Burns** in as little as **2 hours**.
- **KEEP** new and used batteries **OUT OF REACH of CHILDREN**
- **Seek Immediate Medical Attention** if a battery is suspected to be swallowed or inserted inside any part of the body.



RGB 180-Watt Receiver

Press Pairing Key button



T-C-RGB180

RGB WAV Smart Receiver

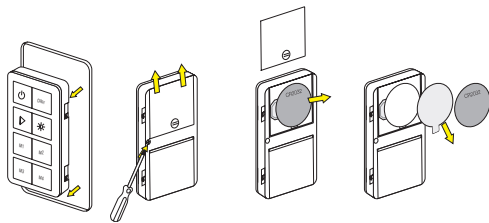
Press Prog. button



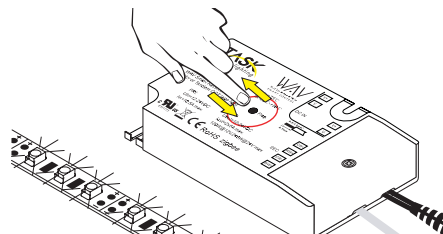
T-WAV-WR180-RGB

Pairing Wireless Controller to smart-home compatible receiver (T-WAV-WR180-RGB)

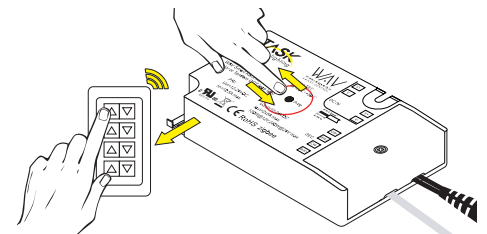
Pairing Instructions to one zone (T-WAV-WR180-RGB shown in illustrations).



1. Remove Controller from back plate. Use included screw driver to remove screw, slide battery compartment open, remove battery, and discard clear plastic tab. Reinsert battery, replace cover, and screw down.



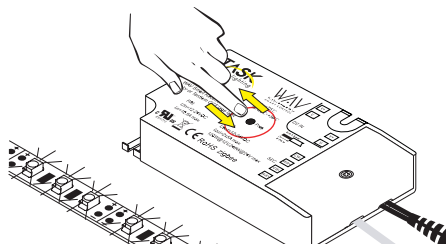
2. If setting the receiver up for the first time, clear the memory by pressing and holding the "Prog." button until the lights blink.



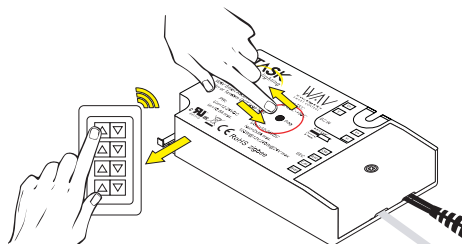
3. Very quickly, click and release the "Prog." button and, within 5 seconds, quickly click and release one of the "Up arrow" buttons on the Controller. When lights blink once, Controller and Receiver are paired.

NOTE: when pairing additional controllers to the same receiver, DO NOT clear the memory.

Pairing Instructions for additional zones



1. When pairing additional zones to the same Controller, clear the memory on the new Receiver for the next zone by pressing and holding the "Prog." button until the lights blink.



2. Very quickly, click and release the "Prog." button and, within 5 seconds, quickly click and release one of the "Up arrow" buttons on the Controller. When lights blink once, Controller and Receiver are paired. Repeat process until zones are paired as desired.

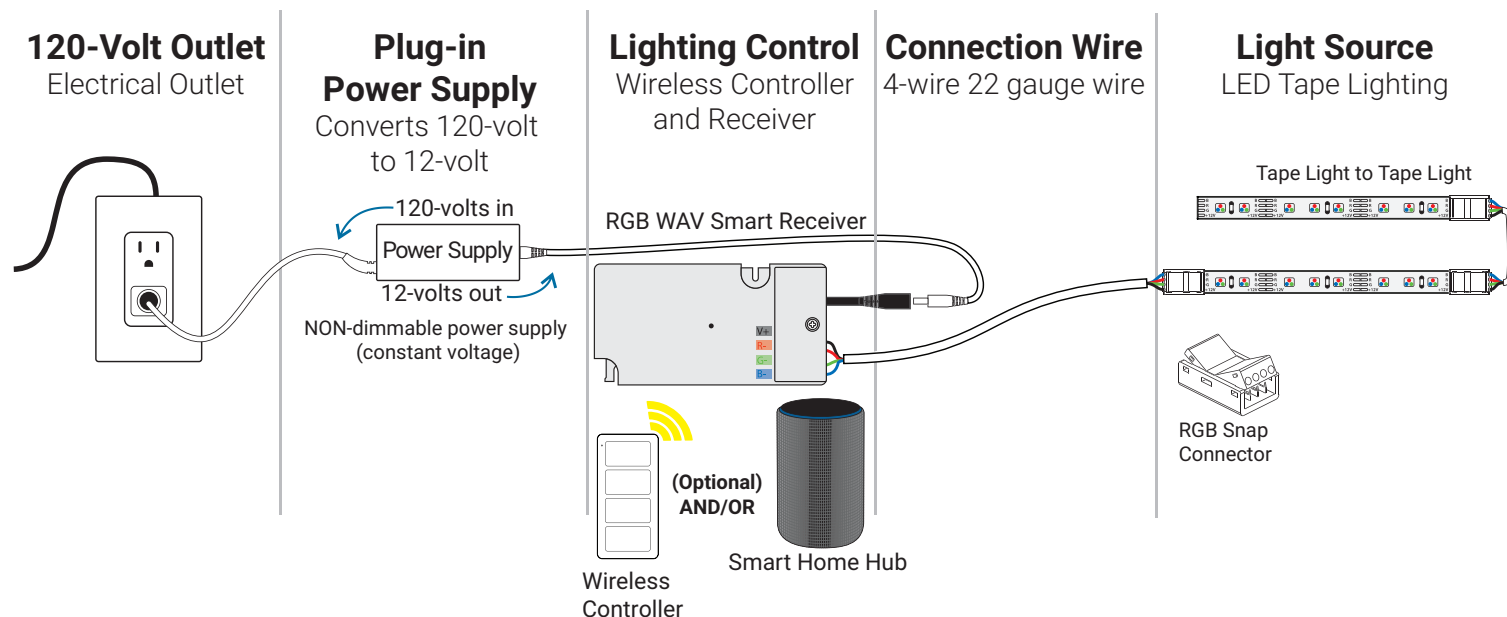
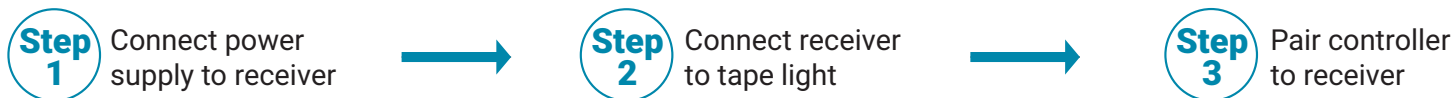
Follow instructions included in receiver or lighting to properly hookup lighting system.

Pairing Instructions – if pairing to a Smart Home Hub, visit www.Vimeo.com/Channels/WAVSmartControl



Scan the QR code to view a list of compatible smart home devices

Easy-to-use smart home controlled LED lighting system

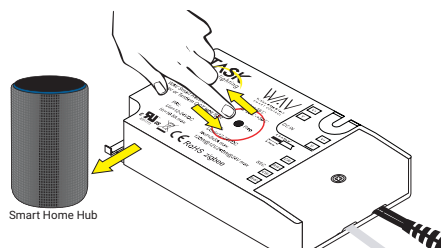


Pairing a smart-home compatible receiver to a smart-home device

Pairing Instructions to one zone (T-WAV-WR180-RGB shown in illustrations).



1. WAV Smart Control™ devices require a Zigbee* 3.0 technology enabled smart home hub to use voice commands and smartphone app control. An additional Zigbee 3.0 technology enabled smart home hub is required if the first device does not have it.



2. Press the "Prog" button on the receiver 5 times to put it into pairing mode, then command the lighting control-enabled smart home hub of your choice to search for lights. In less than 60 seconds, the lights will be paired with the smart home device, enabling app and voice control for on/off/dimming/white light temperature control.

WAV Smart Control™ products work with Zigbee-enabled smart home hub products available from several manufacturers.

*Zigbee is a trademark of Zigbee Alliance, Davis, California.

Follow instructions included in receiver or lighting to properly hookup lighting system.