



## Baby Proofing Product Instructions

Read all instructions before using these products.  
**KEEP INSTRUCTIONS FOR FUTURE USE.**

---

**⚠ WARNING:** Failure to follow these warnings and instructions could result in death or serious injury.

- Read these warnings and instructions carefully before installing and using these products.
- Adult installation required. Keep small parts away from children during installation.
- Properly store any extra or unused components out of reach of children.
- These products will not necessarily prevent all accidents and are only a deterrent. They are not a substitute for adult supervision.
- **STOP** using these products when the child is old enough to defeat them.
- These products are **NOT** toys. **DO NOT** allow children to play with them.
- **DO NOT** use cabinet, drawer or multi-purpose latch products to guard against toxic and dangerous substances or sharp-edged or pointed objects. Such objects should be placed out of the reach of children.
- Frequently check that these products are working properly.
- Replace these products if they become damaged, broken, or fail to function properly.

### NOTES:

- Adhesive may remove finish from some surfaces so test on small area first.
- For best performance, the mounted adhesive must be left to fully adhere for 48 hours before first use.

## TABLE OF CONTENTS

<b>2-PACK OUTLET COVERS</b> (SKU# 67010001) .....	3
<b>CABINET &amp; DRAWER LATCHES</b> (SKU# 67010002) .....	4
<b>FINGER &amp; HAND PINCH GUARD</b> (SKU# 67010003) .....	7
<b>2-PACK TV OR FURNITURE WALL STRAPS</b> (SKU# 67010005) .....	8
<b>2-PACK FURNITURE WALL ANCHORS</b> (SKU# 67010006) .....	14
<b>CABINET SLIDE LOCK</b> (SKU# 67010007) .....	16
<b>MULTI-PURPOSE STRAP LATCH</b> (SKU# 67010008) .....	18
<b>STOVE KNOB COVERS</b> (SKU# 67010009) .....	20
<b>DOORKNOB COVERS</b> (SKU# 67010010) .....	22
<b>DOOR LEVER HANDLE LOCK</b> (SKU# 67010011) .....	24
<b>2-PACK CLEAR FURNITURE CORNER CUSHIONS</b> (SKU# 67010012) .....	26
<b>FOAM EDGE GUARDS</b> (SKU# 67010013) .....	28
<b>2-PACK FOAM CORNER CUSHIONS</b> (SKU# 67010014) .....	30
<b>NOTES</b> .....	31

## 2-PACK OUTLET COVERS

### **⚠ WARNING: RISK OF FIRE OR ELECTRIC SHOCK.**

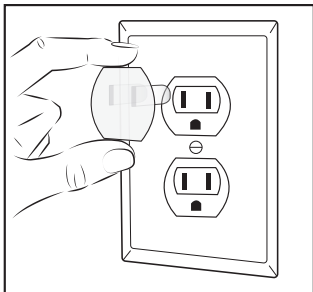
- If the Outlet Cover falls out of or fits loosely in the receptacle, the receptacle contacts may be worn or broken.
  - To reduce the risk of fire or injury caused by overheating, arcing or exposure of live plug blades, do not use receptacle until it has been checked by a licensed electrician.
  - This device is intended to make it difficult for children to gain access to energized outlets. Like any other child-deterrent product, this device is not a substitute for adult supervision. An unsupervised child may be able to defeat this product. As with all electrical products, precautions should be observed during handling and use to prevent electrical shock. Do not allow children to play with electrical equipment.
- 

### **INSTALLATION**

Firmly push the Outlet Cover into the electrical outlet.

### **TO CLEAN**

Remove Outlet Cover. Wipe Cover with damp cloth and dry completely.



### **CAUTION:**

- Check the product regularly to ensure safe use.
  - If worn or damaged, remove outlet cover immediately and replace as needed.
  - Discontinue use when the child is able to remove it.
-

## CABINET & DRAWER LATCHES

**⚠ WARNING:** Failure to follow these warnings and instructions could result in death or serious injury.

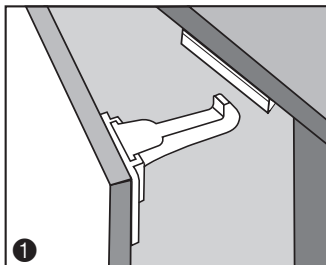
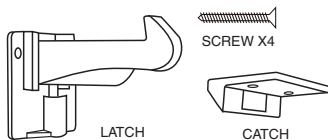
- This device is intended to restrict access by young children to the contents of a cabinet or drawer, but some children may still be able to defeat it.
- **ALWAYS** use the screws provided to install the latches. **NEVER** rely on the adhesive pads without screws.
- **DO NOT** use this product to guard against toxic and dangerous substances, or sharp-edged or pointed objects. Such objects should be placed out of the reach of children.

### INSTALLATION

**Tools Needed:** Phillips Head Screwdriver, Pencil

#### Cabinet Door Installation

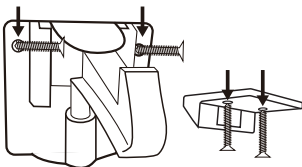
1. Determine position for door latches. Position the latch on the inside of the cabinet door near the edge of the cabinet. Your ideal location can be at the door side or the top edge. ❶
2. Clean and dry the surface thoroughly where you plan to place the latch and catch.
3. Remove adhesive backing on the latch, stick into position, press and hold for 10 seconds.



**NOTE:** For best performance, the mounted adhesive must be left to fully adhere for 48 hours before first use.

## CABINET & DRAWER LATCHES (continued)

4. Determine the correct position for the catch to lock the latch. The tip of the latch should grasp the tip of the catch, keeping the cabinet door secure. Place the catch following the same steps above.

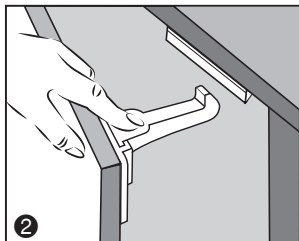


5. Using a Phillips Head Screwdriver, screw the 4 included screws into the holes on both the latch and catch.

**ALWAYS** use the screws provided to install the latches.

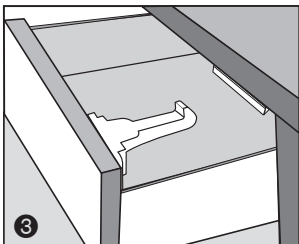
**NEVER** rely on the adhesive pads without screws.

6. To open, simply open the cabinet door and push down on the spring-loaded latch. ②



### Drawer Installation

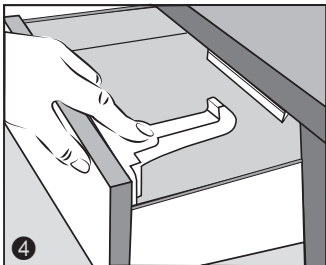
1. Determine position for drawer latches. Position the latch on the inside of the face of the drawer aligned with the top, inside edge. ③
2. Clean and dry the surface thoroughly where you plan to place the latch and catch.
3. Remove adhesive backing on the latch, stick into position, press and hold for 10 seconds.



**NOTE:** For best performance, the mounted adhesive must be left to fully adhere for 48 hours before first use.

## CABINET & DRAWER LATCHES (continued)

4. Determine the correct position for the catch to lock the latch.  
The tip of the latch should grasp the tip of the catch, keeping the drawer secure. Place the catch following the same steps above.
5. Using a Phillips Head Screwdriver, screw the 4 included screws into the holes on both the latch and catch. **ALWAYS** use the screws provided to install the latches. **NEVER** rely on the adhesive pads without screws. ④
6. To open, simply pull out the drawer and push down on the spring-loaded latch.



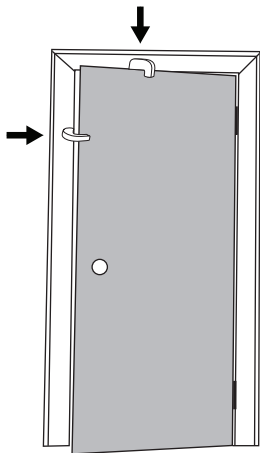
### TO CLEAN

Wipe with damp cloth and dry completely.

## FINGER & HAND PINCH GUARD

### INSTALLATION

1. Install Finger & Hand Pinch Guard to the top or the side of the door as shown. Ensure that the door guard is installed securely and cannot fall from door.
2. Make sure your child can not reach the Finger & Hand Pinch Guard.
3. Check the Finger & Hand Pinch Guard regularly. Replace if it gets worn or loose.



## 2-PACK TV OR FURNITURE WALL STRAPS

**⚠WARNING:** Failure to follow these warnings and instructions could result in death or serious injury.

- Secure Televisions and Furniture by fastening/anchoring the restraints to a stud in the wall. **ALWAYS** use 1 set (2 straps) of the TV or Furniture Wall Straps for each TV and/or each piece of furniture to be anchored.
- Frequently check to ensure that the anchoring screws are securely installed.
- Visit CPSC.GOV to learn all about the Anchor It! public service announcement on TV and Furniture tip-overs.
- For indoor use only.
- This product is not a substitute for proper adult supervision. Manufacturer assumes no liability for improper installation or excessive loads placed on screws, brackets or straps.

---

## **INSTALLATION**

**Tools Needed:** Phillips Head Screwdriver, Power Drill with 1/8" Bit, Measuring Tape, Stud Finder, Pencil

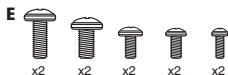
### **Before You Begin:**

- Remove all parts from packaging.
- Layout and identify all parts. Keep small parts away from children.
- Use a Phillips Head Screwdriver to manually install all bolts/screws.

**NOTE:** Not all included hardware will be used. Place any unused hardware out of child's reach.



## 2-PACK TV OR FURNITURE WALL STRAPS (continued)



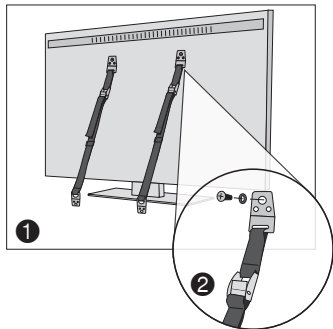
- A. Wall Strap End Bracket  
B. Adjuster  
C. Adjuster  
D. Wall Strap End Bracket

- E. Bolts  
(5 sizes, 2 each)  
F. Washers (4)  
G. Wood Screws  
(2 sizes, 4 each)

### TV-TO-WALL STUD INSTALLATION

#### Attaching Straps to Wall Stud

1. Unplug TV from power outlet.
2. Align Wall Strap End Brackets **A** with the top holes on the back of the TV. ❶
3. Using a Phillips Head Screwdriver, secure Wall Strap End Brackets using the bolt **E** that fits your TV. Washers **F** may also be required if using the small diameter bolts. ❷
4. Using a stud finder tool, locate the 2 wall studs behind your TV.

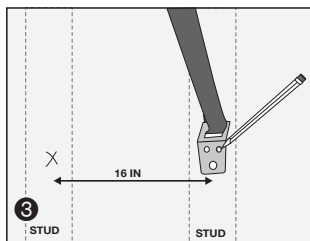


**NOTE:** Studs are typically 16" apart on center.

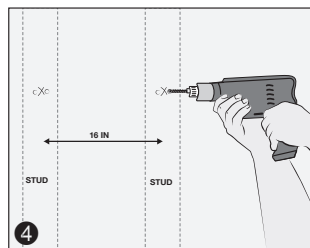
Mark your stud locations with a pencil approximately 6" below the top of your TV stand. This is the height/location for your strap

## 2-PACK TV OR FURNITURE WALL STRAPS (continued)

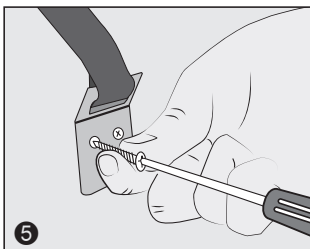
brackets to be installed. Using the brackets, mark the wall through the 2 smaller holes for each strap. ③  
(Total = 4 marks)



5. Using a 1/8" drill bit, drill a pilot hole in all 4 locations as marked. ④

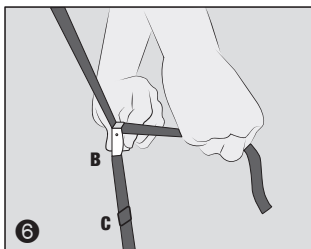


6. Select the longest length wood screws ⑥. Using a Phillips Head Screwdriver, manually install the screws into the wall studs through the brackets, to securely attach the brackets to the wall. ⑤



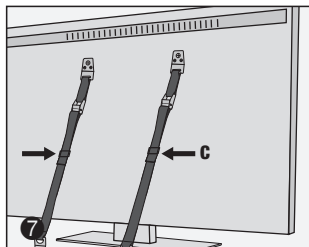
## 2-PACK TV OR FURNITURE WALL STRAPS (continued)

7. If the TV was moved to install the straps to the wall, move the TV back to its desired location and firmly tighten the straps as directed in the next step.
8. To tighten, pinch the adjuster **B** and pull the strap ensuring that the TV is securely supported and cannot tip forward. **6**



9. Slip the tail end of the strap into the holder provided **C** to complete the installation. **7**

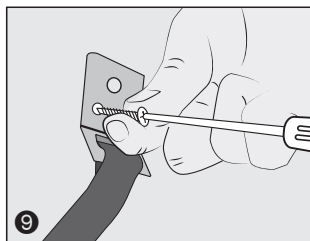
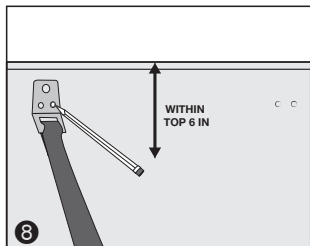
**NOTE:** Check frequently to assure the straps remain taut and tight.



### FURNITURE-TO-WALL STUD INSTALLATION

#### Attaching Straps to Furniture

1. Position the strap end brackets on the back of the furniture. Using a pencil, mark the furniture through the 2 smaller holes. **8**  
(Total = 4 marks)
2. Using a 1/8" drill bit, drill a pilot hole in all 4 locations as marked.
3. Select the shortest length wood screws **6**. Using a Phillips Head Screwdriver, manually install the screws into the furniture through the brackets to securely attach the brackets to the furniture. **9**



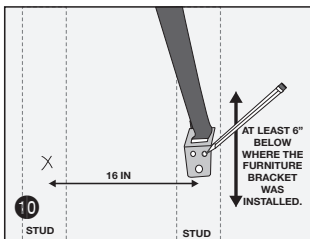
#### Attaching Straps to Wall

1. Using a stud finder tool, locate the 2 wall studs behind your furniture.

**NOTE:** Studs are typically 16" apart on center.

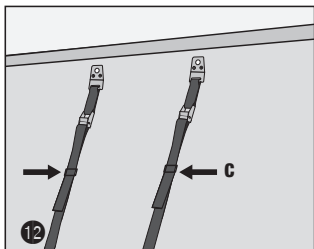
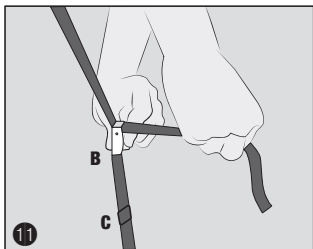
Mark your stud locations with a pencil at least 6" below where the furniture bracket was installed. This is the height/location for your strap brackets to be installed.

Using the brackets, mark the wall through the 2 smaller holes for each strap. **10**  
(Total = 4 marks)



## 2-PACK TV OR FURNITURE WALL STRAPS (continued)

- Using a 1/8" drill bit, drill a pilot hole in all 4 locations as marked.
- Select the longest length wood screws **G** (see pg. 9). Using a Phillips Head Screwdriver, manually install the screws into the wall studs through the brackets, to securely attach the brackets to the wall.
- If the furniture was moved to install the straps, then move the furniture back to desired location and firmly tighten the straps as directed in next step.
- To tighten, pinch the adjuster **B** and pull the strap ensuring that the furniture is securely supported and cannot tip forward. 11
- Slip the tail end of the strap into the holder **C** provided to complete the installation. 12



**NOTE:** Check frequently to assure the straps remain taut and tight.

### CAUTION:

- For ALL installations, two sets of brackets are required per each TV. Two sets of brackets are required for each piece of furniture.
- When attaching directly to the wall, check to ensure the brackets are firmly screwed into wall studs and that the TV or Furniture brackets are firmly attached to the TV or Furniture, and the straps are taut and secure.

## 2-PACK FURNITURE WALL ANCHORS

**⚠ WARNING:** Failure to follow these warnings and instructions could result in death or serious injury.

- Secure Furniture by fastening/anchoring the restraint to a wood stud in the wall. **ALWAYS** use 1 set (2 anchors) of the Furniture Wall Anchors for each piece of furniture to be anchored.
- Wall Anchors **MUST** be positioned on a wall stud to properly secure furniture.
- Frequently check to assure that the anchoring screws are securely installed.
- Visit CPSC.GOV to learn all about the Anchor It! public service announcement on TV and Furniture tip-overs.
- This product is not a substitute for proper adult supervision. Manufacturer assumes no liability for improper installation or excessive loads placed on screws, brackets or straps.

---

### INSTALLATION

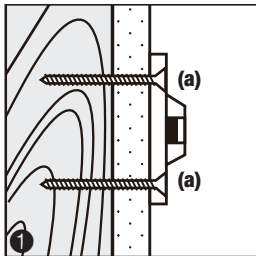
**Tools Needed:** Phillips Head Screwdriver, Power Drill with 1/8" Bit, Measuring Tape, Stud Finder, Pencil

#### FURNITURE-TO-WALL STUD INSTALLATION

1. Using a stud finder tool, locate the 2 wall studs behind your furniture.

**NOTE:** Studs are typically 16" apart on center.

Mark your stud locations with a pencil approximately 1" inch below the top of the furniture. This is the height/ location for the wall brackets to be installed. Using the brackets, mark the wall through the 2 holes for each anchor. (Total = 4 marks)



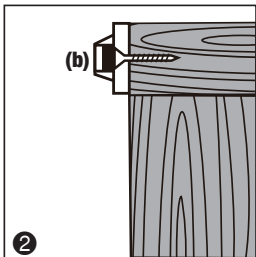
## 2-PACK FURNITURE WALL ANCHORS (continued)

Using a 1/8" drill bit, drill a pilot hole in all 4 locations as marked.

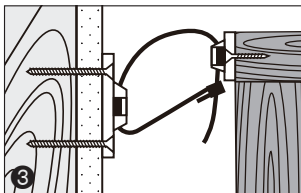
Select the longest length wood screws **(a)**. Using a Phillips head screwdriver, manually install the screws into the wall studs through the brackets, to securely attach the brackets to the wall. ❶

2. Two brackets will need to be attached to the back of the furniture frame at the top. Temporarily move the furniture into its final position and mark the location of the furniture brackets on the furniture frame (Total = 4 marks).

Move the furniture away and place a bracket on each mark. Using a 1/8" drill bit, drill a pilot hole in all 4 locations as marked. Select the shorter length wood screws **(b)**. Using a Phillips head screwdriver, manually install the screws into the furniture frame through the brackets, to securely attach the brackets to the furniture. ❷



3. Move the furniture back into its final position, taking care to line up the wall brackets with the furniture brackets. Thread a Furniture Wall Anchor through each bracket. Tighten straps until snug. Do not overtighten. ❸



### CAUTION:

- For ALL installations, two sets of brackets are required per each piece of furniture.
- Check to be sure the wall brackets are firmly screwed into wall studs, the furniture brackets are firmly attached to the frame, and the straps are snug.

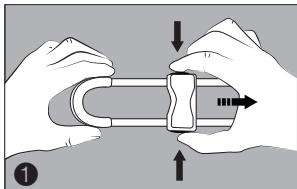
## CABINET SLIDE LOCK

**⚠ WARNING:** Failure to follow these warnings and instructions could result in death or serious injury.

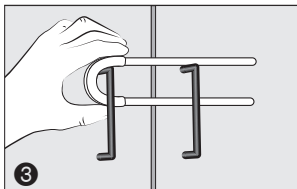
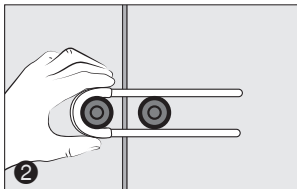
- DO NOT use this product to guard against toxic and dangerous substances, or sharp-edged or pointed objects. Such objects should be placed out of the reach of children.

### INSTALLATION

1. To unlock press the top and bottom buttons on the Cabinet Slide Lock and slide to remove the lock. ①



2. Place the lock slide around the cabinet knobs ② or through the cabinet handles. ③

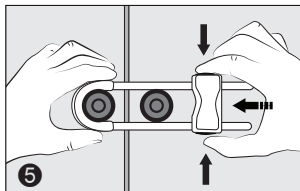
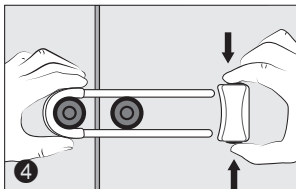




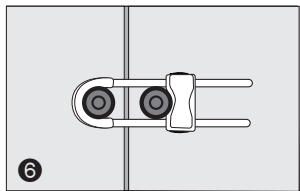
## CABINET SLIDE LOCK (continued)

3. Press the buttons on the Cabinet Slide Lock ④ and slide tightly into place as close as possible. ⑤

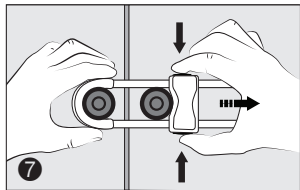
Pull on knobs/handles to ensure that lock is working as intended.



4. Release the buttons to lock the Cabinet Slide Lock into place against knobs/handles. ⑥



5. To unlock press buttons and slide out. ⑦



## TO CLEAN

Wipe with damp cloth and dry completely.

## MULT-PURPOSE STRAP LATCH

**⚠ WARNING:** Failure to follow these warnings and instructions could result in death or serious injury.

- DO NOT use this product to guard against toxic and dangerous substances, or sharp-edged or pointed objects. Such objects should be placed out of the reach of children.

### INSTALLATION

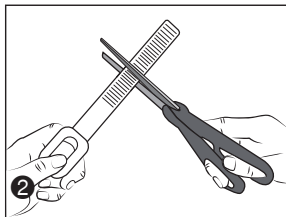
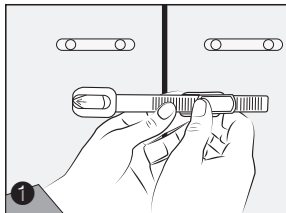
**Tools Needed:** Scissors

1. Determine position for the Multi-Purpose Strap Latch. ❶

Position strap in selected location and mark the extra strap length that extends past the sliding clip if the strap needs to be adjusted.

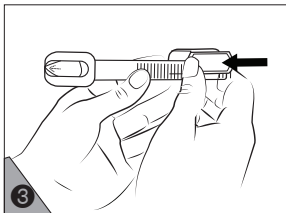
**NOTE:** If you do not need to adjust the length of the strap, move to Step 3.

2. Using scissors, trim the strap to the desired length. ❷



3. Place the sliding clip back onto the strap and push the clip to the left. You will hear a “click” when the clip is in the secure position. ❸

**NOTE:** Measure and trim the strap carefully. The slide cannot be repositioned once it has clicked into this final position.

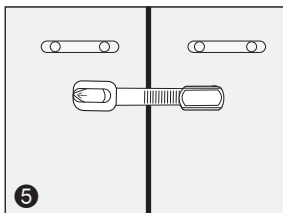
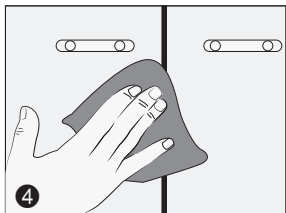


## MULTI-PURPOSE STRAP LATCH (continued)

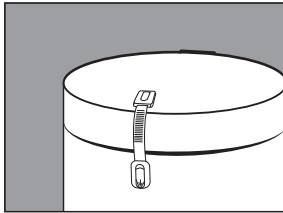
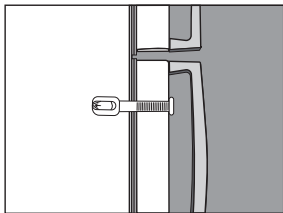
4. Clean and dry the area where you plan to place the Multi-Purpose Strap Latch. ④
5. Remove adhesive backing on both sides of the latch, stick into position, press and hold firmly for 10 seconds. ⑤

**NOTE:** For best performance, the mounted adhesive must be left to fully adhere for 48 hours before first use.

6. To open the multi-purpose strap latch, slide the button and pull the latch toward you to access the locked area.



**The Multi-Purpose Strap Latch can also be used to secure Appliances, Drawers, Trash Cans and more.**



## TO CLEAN

Wipe with damp cloth and dry completely.

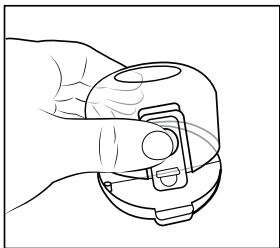
## STOVE KNOB COVERS

**⚠WARNING:** Failure to follow these warnings and instructions could result in death or serious injury.

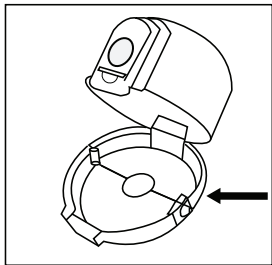
- ALWAYS keep children away from the stove.
  - Assemble Stove Knob Covers so that the release button is pointed away from child.
  - Frequently check to assure that they are locked.
- 

### INSTALLATION

1. Press the front button on the top half to unlock and lift the Stove Knob Cover.

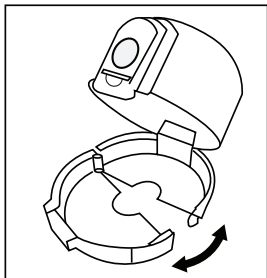


2. Press in on the outer edge of the lower half to open at the hinge.

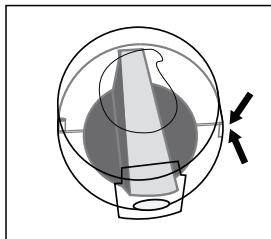


## STOVE KNOB COVERS (continued)

3. Spread open the lower half of cover and place over the knob on your stove.
4. Snap together both sides of lower half. Listen for the “click” to ensure it is secure and firmly locked in position.



5. Close the top lid. Listen for the “click” to ensure it is secure and firmly locked in position.



### **TO CLEAN**

Hand wash in hot, soapy water and dry with soft cloth.

## DOORKNOB COVERS

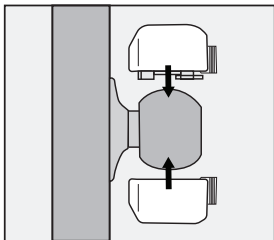
**⚠ WARNING:** Failure to follow these warnings and instructions could result in death or serious injury.

- DO NOT use product if damaged or broken.
- Using this product on an exterior door can hinder your ability to open the door in an emergency.
- Understand how this product works so that you can exit in an emergency.

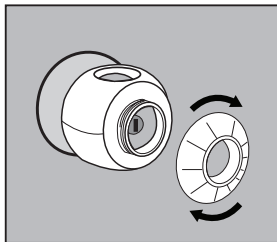
---

### INSTALLATION

1. Snap top and bottom halves of Doorknob Cover in place over the doorknob, with the threads facing out.

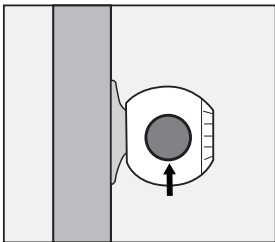


2. Tighten the threaded ring onto the face of the Doorknob Cover.



## DOORKNOB COVERS (continued)

3. The doorknob will be visible on two sides of the Doorknob Cover for adults to grip and turn the knob.



### **TO CLEAN**

Wipe with damp cloth and dry completely.

## DOOR LEVER HANDLE LOCK

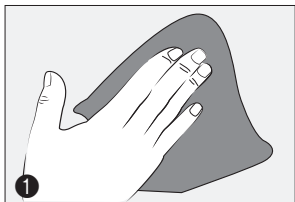
**⚠ WARNING:** Failure to follow these warnings and instructions could result in death or serious injury.

- DO NOT use this product to guard against toxic and dangerous substances, or sharp-edged or pointed objects. Such substances or objects should be placed out of the reach of children.
- DO NOT use product if damaged or broken.
- Using this product on an exterior door can hinder your ability to open the door in an emergency.
- Understand how this product works so that you can exit in an emergency.

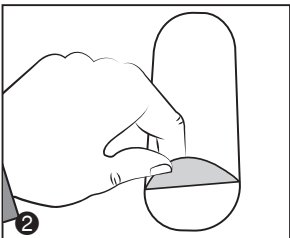
---

### INSTALLATION

1. Clean and dry the area around door lever handle. ①



2. Determine position for Door Lever Handle Lock. With the adhesive still on the product, test fit the lock around the door lever.
3. Remove adhesive backing from the Door Lever Handle Lock. ②

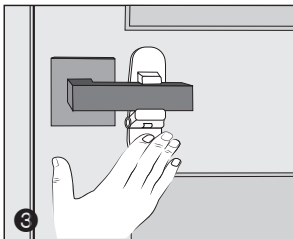




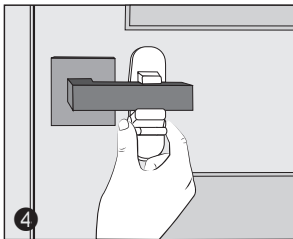
## DOOR LEVER HANDLE LOCK (continued)

4. Stick the Door Lever Handle Lock in position as shown. Press firmly and hold for 10 seconds. ③

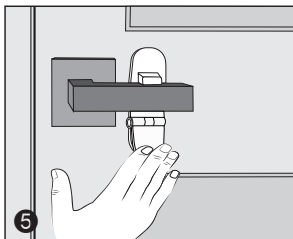
**NOTE:** For best performance, the mounted adhesive must be left to fully adhere for 48 hours before first use.



5. To enable the lock, pinch the buttons on both sides of the lock and flip the lock up to restrict lever handle movement. ④
6. To disable the lock, pinch the buttons on both sides of the lock.



7. Flip the lock down to allow the door handle free movement. ⑤



### TO CLEAN

Wipe with damp cloth and dry completely.

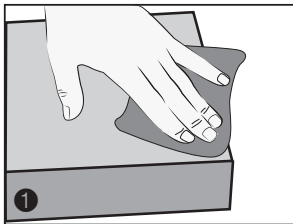
## 2-PACK CLEAR FURNITURE CORNER CUSHIONS

**⚠ WARNING:** Failure to follow these warnings and instructions could result in death or serious injury.

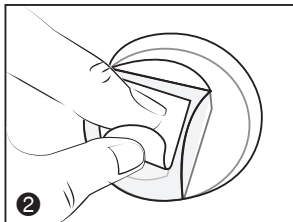
- Always check security of adhesive-backed guards to furniture.
- Check frequently after initial installation and before use.
- For indoor use only.
- DO NOT allow children to chew on product.

### INSTALLATION

1. Clean and dry the area where each Clear Furniture Corner Cushion will be applied. ①



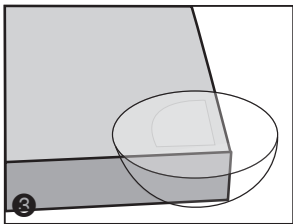
2. Peel paper backing off the Clear Furniture Corner Cushion. ②



## 2-PACK CLEAR FURNITURE CORNER CUSHIONS (continued)

3. Apply the Clear Furniture Corner Cushion onto each selected corner, pressing firmly for 10 seconds. ③

**NOTE:** For best performance, the mounted adhesive must be left to fully adhere for 48 hours before first use.



### **TO CLEAN**

Wipe with damp cloth and dry completely.

## FOAM EDGE GUARDS

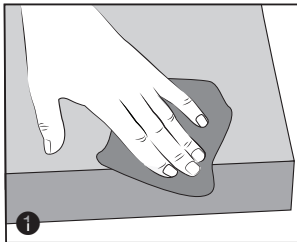
**⚠WARNING:** Failure to follow these warnings and instructions could result in death or serious injury.

- Always check security of adhesive-backed guards to furniture or fireplace hearth.
- Check frequently after initial installation and before use.
- For indoor use only.
- DO NOT allow children to chew on product.

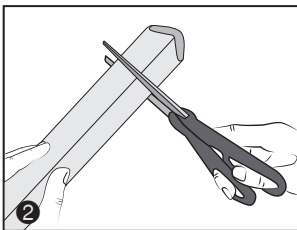
## INSTALLATION

**Tools Needed:** Scissors

1. Clean and dry the area where you plan to place each Foam Edge Guard. ❶



2. Measure the length of furniture edge and cut the Foam Edge Guard to the desired length. ❷

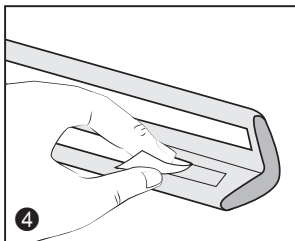
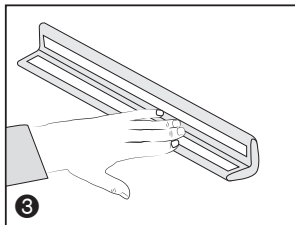


## FOAM EDGE GUARDS (continued)

3. Stick double-sided adhesive tape to edge protector. Press firmly and hold for 10 seconds. ③
4. Peel the paper backing off each adhesive strip once it is mounted to the Foam Edge Guard. ④
5. Align the Foam Edge Guards, pressing firmly on the table or hearth edge surface to secure. Press firmly and hold for 10 seconds.

**NOTE:** For best performance, the mounted adhesive must be left to fully adhere for 48 hours before first use.

6. Repeat until all desired edges are covered.



### TO CLEAN

Wipe with damp cloth and dry completely.

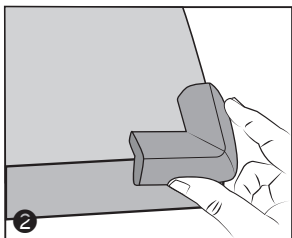
## 2-PACK FOAM CORNER CUSHIONS

**⚠ WARNING:** Failure to follow these warnings and instructions could result in death or serious injury.

- Always check security of adhesive-backed guards to furniture or fireplace hearth.
- Check frequently after initial installation and before use.
- For indoor use only.
- DO NOT allow children to chew on product.

### INSTALLATION

1. Clean the location where each Foam Corner Cushion will be applied and allow to dry thoroughly. ❶
2. Peel the paper backing off the adhesive strips on the Foam Corner Cushion.
3. Apply Foam Corner Cushions onto each corner, pressing each firmly for 10 seconds. ❷



**NOTE:** For best performance, the mounted adhesive must be left to fully adhere for 48 hours before first use.

### TO CLEAN

Wipe with damp cloth and dry completely.



# ParentLink®

answers. advice. affirmation.

[www.eventflo.com](http://www.eventflo.com)

1-800-233-5921

8 AM to 5 PM E.T.