



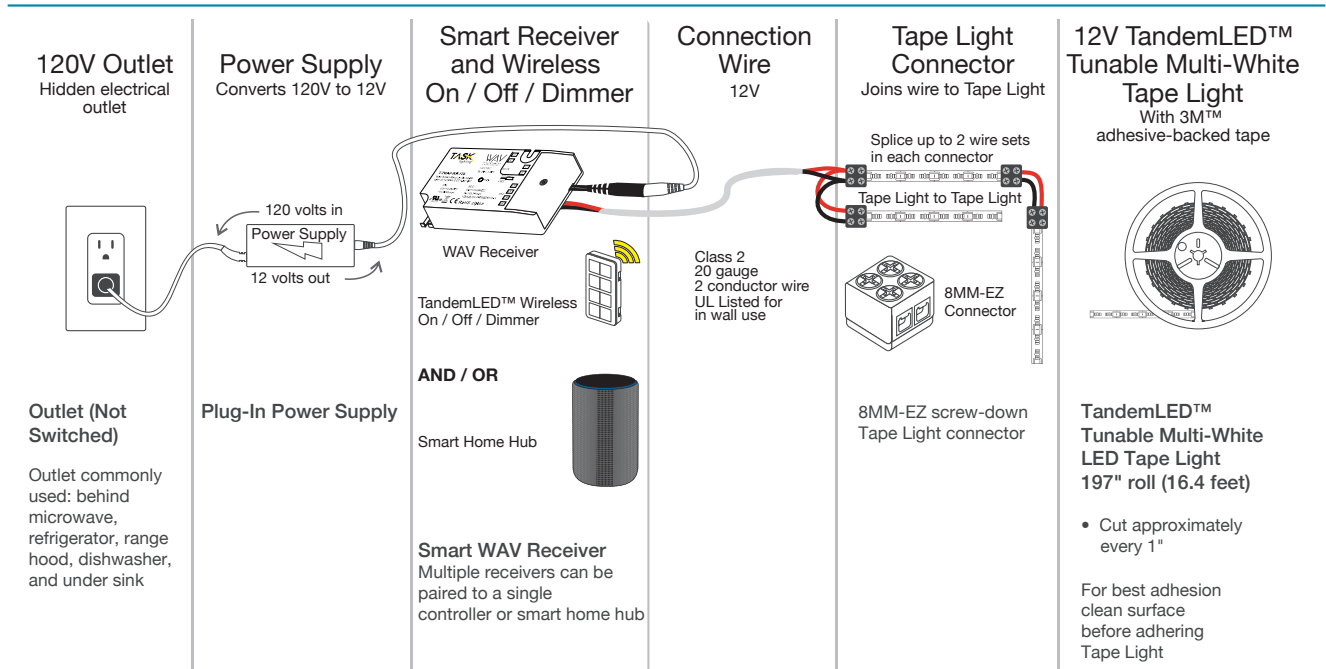
Part Number	Description
T-TWAV-WR-120	120 watt WAV smart LED receiver. Allows you to use a wireless RF controller, a third-party Smart Home app, or voice via Smart Home Hub to control lights. Use with TandemLED smart controller (T-T-1Z-WC-RF-Color) for tunable white light control or use with an Uno controller (T-Q-1Z-WC-RF-Color), Duo controller (T-Q-2Z-WC-RF-Color), or a Quattro controller (T-Q-4Z-WC-RF-Color) for single color tape light control with smart home compatibility.

Overview of WAV Smart Receiver Hookup Diagram

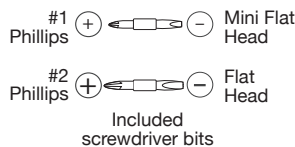
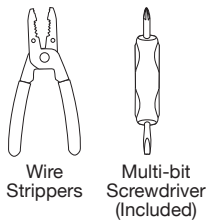
Step 1. Connect Power Supply to Receiver

Step 2. Connect Receiver to Tape Light

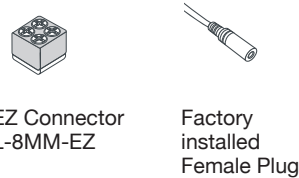
Step 3. Pair Receiver to Wireless Controller or Smart Home Hub



Tools Needed

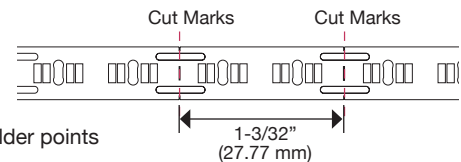


Product Legend



NOTE

- **DO NOT** connect low-voltage LED tape light to high-voltage power.
- Do not over tighten any screws.
- Maintain polarity on all connections, Red to (+) and Black to (-).
- Maximum 32.8 feet of Tape Light can be connected together.
- For shorter lengths of Tape Light, cut with scissors at cut marks where a black line runs through 2 solder points – **CUT AT DESIGNATED CUT LINES ONLY**



Pre-Installation Testing

1. Completely unroll the LED Tape Light from the reel.

2. Plug-in Power Supply – insert the Male Plug on the Power Supply into the Female Connector on the end of the LED Tape Light.

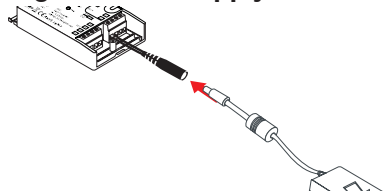
3. Turn on 120V AC power to the Power Supply. All LEDs should illuminate.

4. Unplug Power Supply – after verifying LED illumination, disconnect LED Tape Light from Power Supply.

Step 1. Connect Power Supply to Receiver

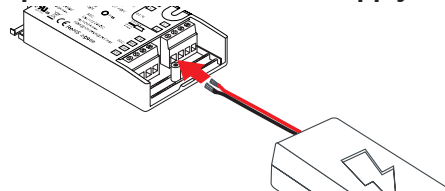
NOTE: Provide receptacle for Plug-in Power Supply or use existing outlet behind the microwave, refrigerator, dishwasher, or under the sink. If using our in-line low voltage switches, sensors, or Wireless Control systems, see instructions packaged with the components.

Plug-In Power Supply



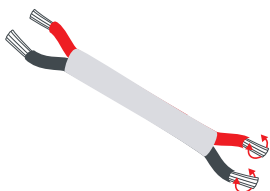
Insert the Male Barrel Connector on the Power Supply into the Female Plug Cable on the Receiver.

Waterproof Hardwired Power Supply

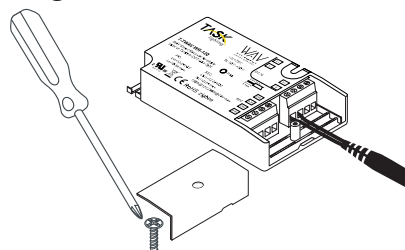


Insert Red wire from Power Supply to (V+) on WAV Smart Receiver and Black Wire from Power Supply to (V-).

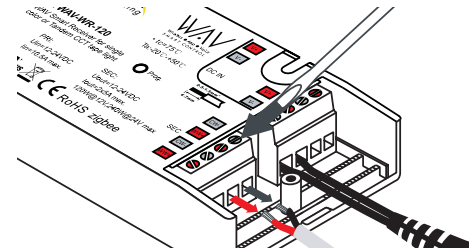
Step 2. Connect Receiver to Tape Light with 8MM-EZ Connector



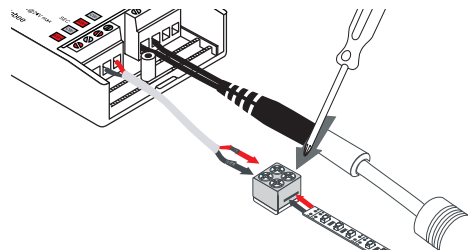
1. Cut a length of connection wire to run from Receiver to Tape Light location. Strip 1/4" insulation from both ends of wire, twist each wire, and fold stripped wires in half.



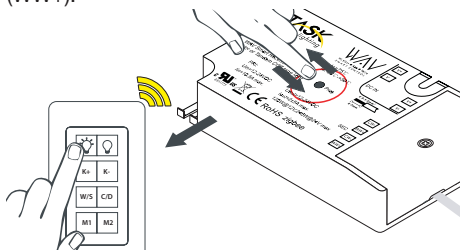
2. Use #2 Phillips to loosen screw and remove cover from WAV Smart Receiver. Use the flat head from the multi-bit screwdriver to loosen one terminal marked (CW-) and one marked (WW+).



3. Insert one end of stripped wires into WAV Smart Receiver LED Terminals, Red wire to (WW+) and Black wire to (CW-) terminals. Tighten screws.



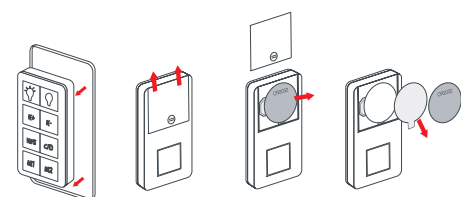
4. Use #1 Phillips to loosen the 4 terminal screws on 8MM-EZ Connector. Peel 1/2" of the adhesive protector from back of LED tape light, and scrape waterproof coating, insert into connector, evenly tighten screws. Insert wires from WAV Smart Receiver into terminals, Red wire to (+ or WW) side of tape, Black wire to (- or CW) side of tape; tighten screws.



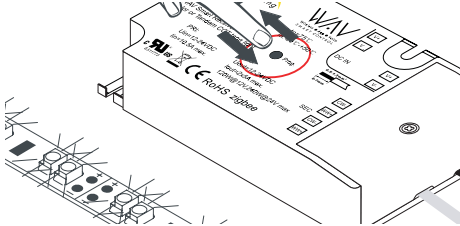
5. Turn on 120V AC to Power Supply and pair WAV Smart Receiver to Controller.

Step 3. Pair Receiver to Wireless Controller

Pairing Instructions – if pairing to a Smart Home Hub, visit www.Vimeo.com/Channels/WAVSmartControl

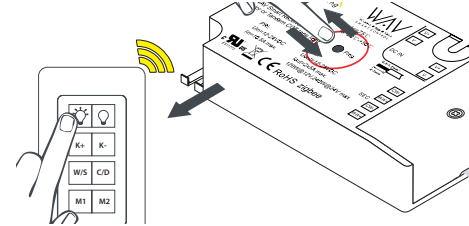


1. Remove Controller from back plate, slide battery compartment open, remove battery, and discard clear plastic tab. Reinsert battery, replace cover.



2. If setting WAV Smart Receiver up for the first time, clear the memory by pressing and holding the "Prog" button until the lights blink twice.

When pairing the WAV Smart Receiver, you DO NOT need to clear the memory each time. Follow Step 3 to pair.



3. Very quickly, click and release the "Prog" button and, within 5 seconds, quickly click and release the "On Light Bulb" button on the Controller. When lights blink once, Controller and Receiver are paired.

NOTE: when pairing additional controllers to the same receiver, DO NOT clear the memory.



Part Number Description

T-TWAV-WR-120

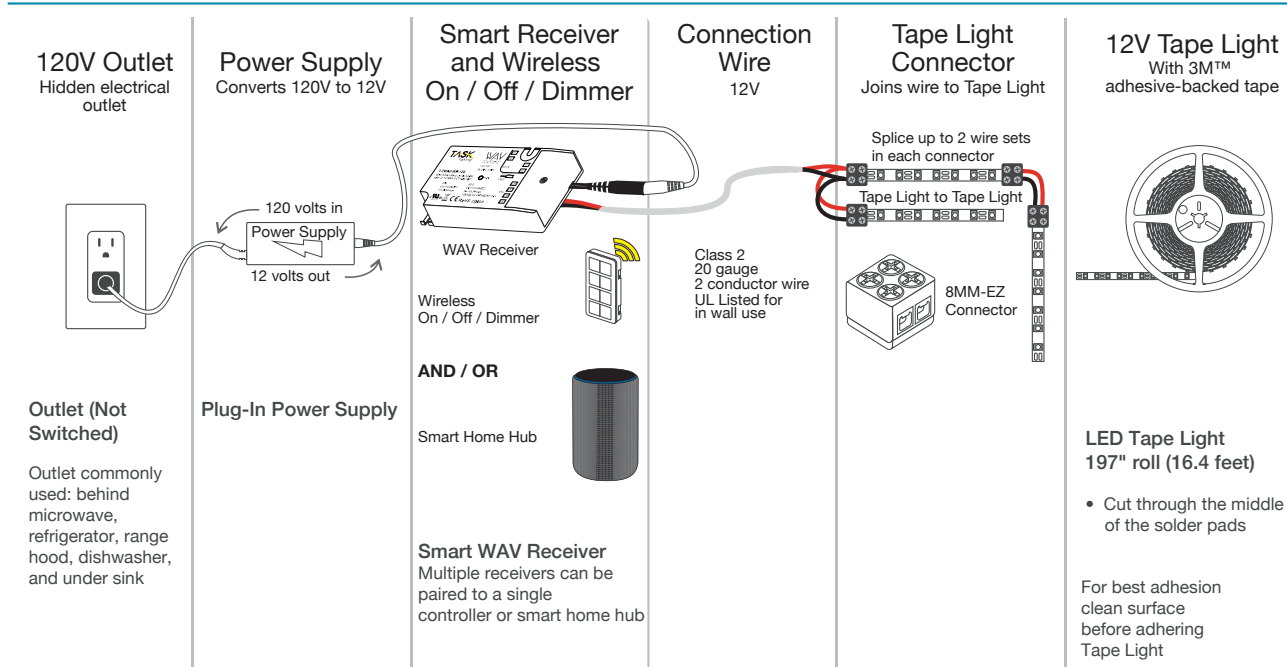
120 watt WAV smart LED receiver. Allows you to use a wireless RF controller, a third-party Smart Home app, or voice via Smart Home Hub to control lights. Use with TandemLED smart controller (T-T-1Z-WC-RF-Color) for tunable white light control or use with an Uno controller (T-Q-1Z-WC-RF-Color), Duo controller (T-Q-2Z-WC-RF-Color), or a Quattro controller (T-Q-4Z-WC-RF-Color) for single color tape light control with smart home compatibility.

Overview of WAV Smart Receiver Hookup Diagram

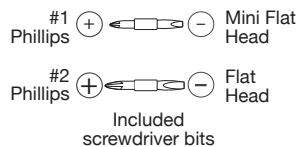
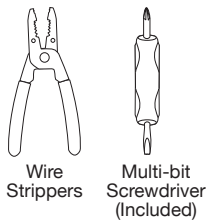
Step 1. Connect Power Supply to Receiver

Step 2. Connect Receiver to Tape Light

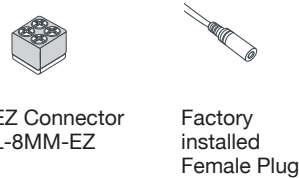
Step 3. Pair Receiver to Wireless Controller or Smart Home Hub



Tools Needed

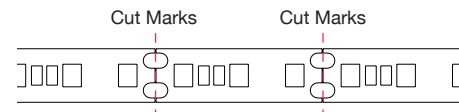


Product Legend



NOTE

- **DO NOT** connect low-voltage LED tape light to high-voltage power.
 - Do not over tighten any screws.
 - Maintain polarity on all connections, Red to (+) and Black to (-).
 - Maximum 32.8 feet of Tape Light can be connected together.
 - For shorter lengths of Tape Light, cut with scissors at cut marks where a black line runs through 2 solder points
- CUT AT DESIGNATED CUT LINES ONLY



Pre-Installation Testing

1. Completely unroll the LED Tape Light from the reel.

2. Plug-in Power Supply – insert the Male Plug on the Power Supply into the Female Connector on the end of the LED Tape Light.

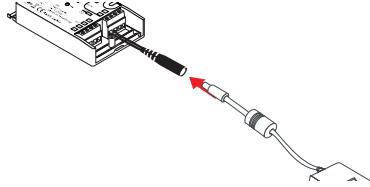
3. Turn on 120V AC power to the Power Supply. All LEDs should illuminate.

4. Unplug Power Supply – after verifying LED illumination, disconnect LED Tape Light from Power Supply.

Step 1. Connect Power Supply to Receiver

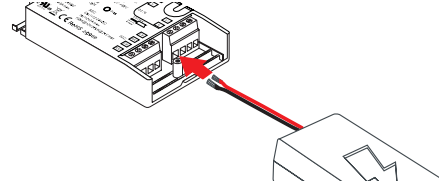
NOTE: Provide receptacle for Plug-in Power Supply or use existing outlet behind the microwave, refrigerator, dishwasher, or under the sink. If using our in-line low voltage switches, sensors, or Wireless Control systems, see instructions packaged with the components.

Plug-In Power Supply



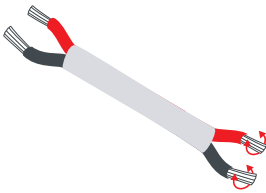
Insert the Male Barrel Connector on the Power Supply into the Female Plug Cable on the Receiver.

Waterproof Hardwired Power Supply

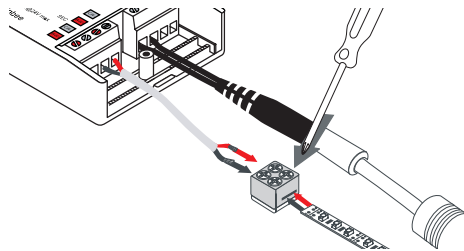


Insert Red wire from Power Supply to (V+) on WAV Smart Receiver and Black Wire from Power Supply to (V-).

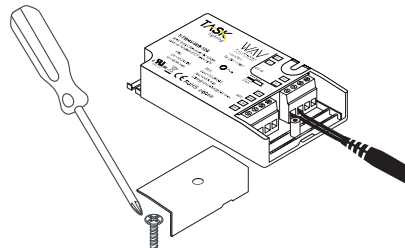
Step 2. Connect Receiver to Tape Light with 8MM-EZ Connector



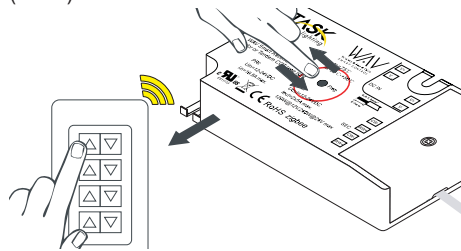
1. Cut a length of connection wire to run from Receiver to Tape Light location. Strip 1/4" insulation from both ends of wire, twist each wire, and fold stripped wires in half.



4. Use #1 Phillips to loosen the 4 terminal screws on 8MM-EZ Connector. Peel 1/2" of the adhesive protector from back of LED tape light, and scrape waterproof coating, insert into connector, evenly tighten screws. Insert wires from WAV Smart Receiver into terminals, Red wire to (+ or WW) side of tape, Black wire to (- or CW) side of tape; tighten screws.

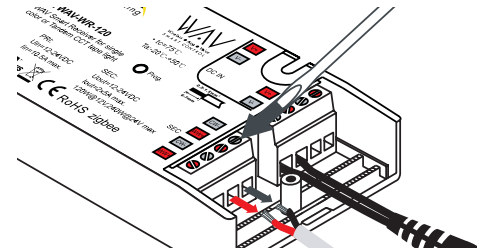


2. Use #2 Phillips to loosen screw and remove cover from WAV Smart Receiver. Use the flat head from the multi-bit screwdriver to loosen one terminal marked (CW-) and one marked (WW+).



5. Turn on 120V AC to Power Supply and pair WAV Smart Receiver to Controller.

NOTE: when pairing the WAV Smart Receiver to a Smart Home Hub, make sure in the app for the smart home device, the Kelvin temperature is tuned to the warmest white to ensure full brightness.

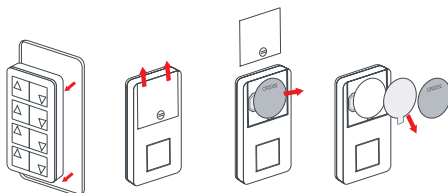


3. Insert one end of stripped wires into WAV Smart Receiver LED Terminals, Red wire to (WW+) and Black wire to (CW-) terminals. Tighten screws.

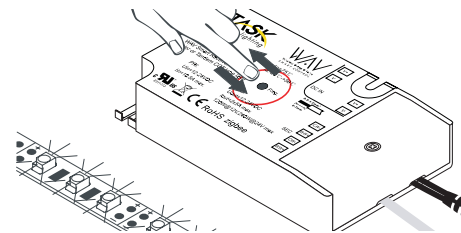
Step 3. Pair Receiver to Wireless Controller

Pairing Instructions – if pairing to a Smart Home Hub, visit www.Vimeo.com/Channels/WAVSmartControl

Note: Smart Home App must be used to turn Kelvin temperature to warmest white to ensure full brightness.

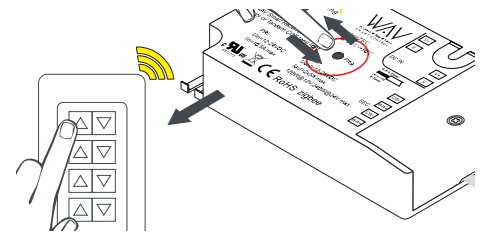


1. Remove Controller from back plate, slide battery compartment open, remove battery, and discard clear plastic tab. Reinsert battery, replace cover.



2. If setting WAV Smart Receiver up for the first time, clear the memory by pressing and holding the "Prog" button until the lights blink twice.

When pairing the WAV Smart Receiver, you DO NOT need to clear the memory each time. Follow Step 3 to pair.



3. Very quickly, click and release the "Prog" button and, within 5 seconds, quickly click and release the "On Light Bulb" button on the Controller. When lights blink once, Controller and Receiver are paired.

NOTE: when pairing additional controllers to the same receiver, DO NOT clear the memory.