

# ARGO

## 3483SK

### LARGE PENDANT

Argo is brilliantly basic in design but has all the right details to make it shine. The smooth lines of its dome have a vintage, industrial feel, but modern updates make Argo contemporary. Heavy straps and decorative screws secure the dome to the cap in this clean and stylish profile.

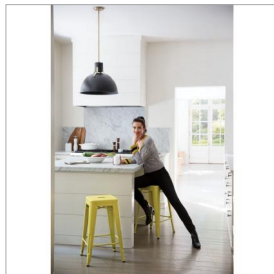
DETAILS	
FINISH:	Satin Black
MATERIAL:	Steel
SLOPE DEGREE:	90
DIMMABLE:	YES - CL TYPE DIMMER (SSL7A)

DIMENSIONS	
WIDTH:	20"
HEIGHT:	17"
WEIGHT:	8.8lb

LIGHT SOURCE	
LIGHT SOURCE:	Socketed
LED NAME:	GU10LED-3K
WATTAGE:	1-6.50w GU10 LED *Included
VOLTAGE:	120v
LUMENS:	500
CRI:	90
INCANDESCENT EQUIVALENCY:	1 x 50w
DIMMABLE:	YES - CL TYPE DIMMER (SSL7A)

MOUNTING	
CANOPY:	5.5" Dia.
LEAD WIRE:	1 X 120"
MAX HEIGHT:	49.8

SHIPPING	
CARTON LENGTH:	22.4
CARTON WIDTH:	22.5
CARTON HEIGHT:	20
CARTON WEIGHT:	14



#### PRODUCT DETAILS:

- Can be hung on a sloped ceiling
- Includes (1) 6" stem and (2) 12" stems to customize hanging height
- Dry Rated
- LED Bulbs carry a 3-year limited warranty
- Bold silhouette with dramatic details creates a modern statement

# HINKLEY

HINKLEY  
33000 Pin Oak Parkway  
Avon Lake, OH 44012

PHONE: (440) 653-5500  
Toll Free: 1 (800) 446-5539

[hinkley.com](http://hinkley.com)