

User Manual

KW2 RX Receiver

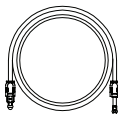
In the Box

Check whether KW2 or any parts are damaged or missed. If this is the case, do not use the product and contact your retailer.



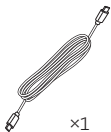
×1

KW2



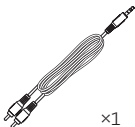
×1

Optical cable (1 m)



×1

USB-C power
cable (1 m)



×1

3.5 mm AUX to RCA
Cable (1 m)



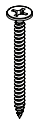
×1

Printed materials



×2

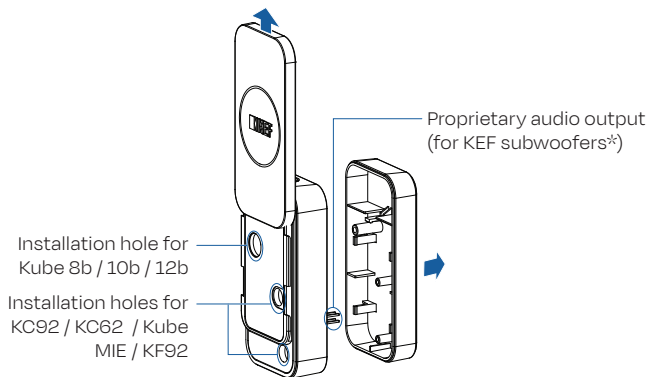
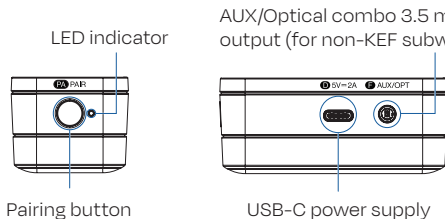
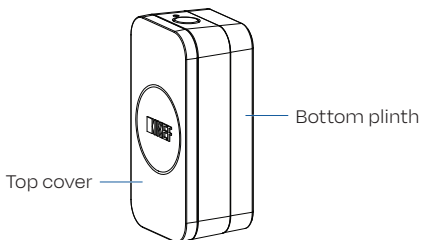
Flat-end Screws
(For KC92 / KC62 / Kube MIE / KF92)



×1

Sharp-end Screw
(For Kube 8b / 10b / 12b)

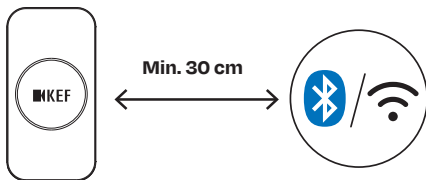
Controls and Connections



*KC92 / KC62 / Kube MIE / KF92 / Kube 8b / 10b / 12b

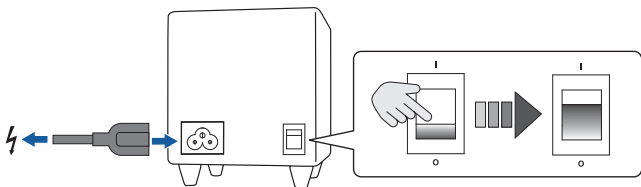
Placement

Ensure KW2 is placed at least 30 cm away from wireless transmitting equipment such as Wi-Fi routers and Bluetooth devices to prevent potential signal interference.



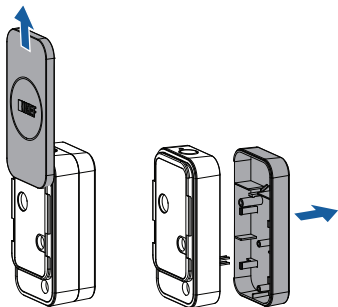
Getting Prepared

- Plug your subwoofer for power and turn it off by setting the power switch to the "O" (OFF) position.

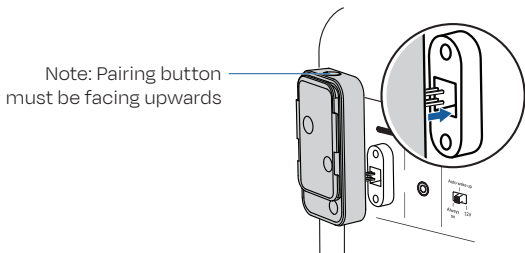


Connecting to KEF Subwoofers KC92 / KC62 / Kube MIE / KF92

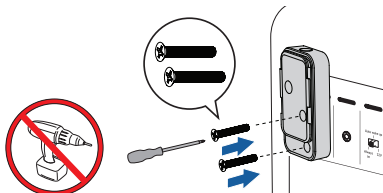
1. Slide the top cover upwards to reveal the installation holes and then gently remove the bottom plinth to expose the 4-pin audio output.



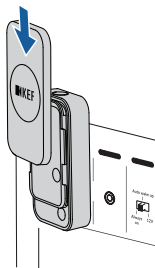
2. Plug the 4-pin audio output into the subwoofer's expansion port (E).
 - IMPORTANT: Make sure the pins are inserted horizontally and the pairing button faces upwards.



3. With a screwdriver, tighten the flat-end screws in the installation holes.
- **IMPORTANT:** Never use an electric screwdriver to avoid damage.

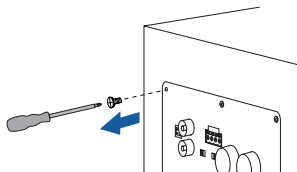


4. Slide the top cover back to its original position.

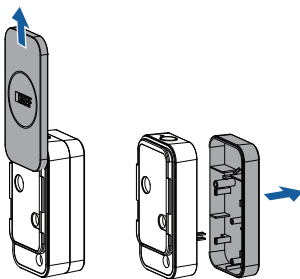


Connecting to KEF Subwoofers Kube 8b/10b/12b

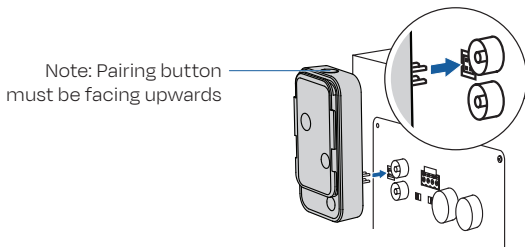
1. With a screwdriver, remove the original screw from the subwoofer.



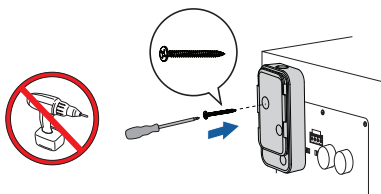
2. Slide the top cover upwards to reveal the installation hole and then gently remove the bottom plinth to expose the 4-pin audio output.



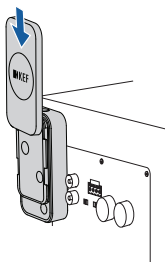
3. Plug the 4-pin audio output into the subwoofer's expansion port (**E**).
 - **IMPORTANT:** Make sure the pins are inserted horizontally and the pairing button faces upwards.



4. With a screwdriver, tighten the sharp-end screw in the installation hole.
- **IMPORTANT:** Never use an electric screwdriver to avoid damage.



5. Slide the top cover back to its original position.



Subwoofer Settings

1. Enable the LFE mode on your subwoofer.

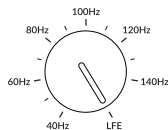
**KC62 / KF92 /
Kube 8b / 10b / 12b**

MANUAL

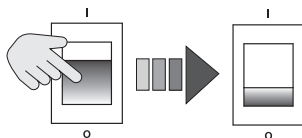


LFE

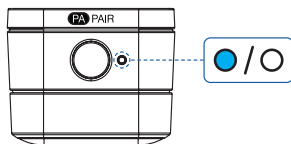
KC92 / Kube MIE



2. Set the subwoofer power switch to the "I" (ON) position.

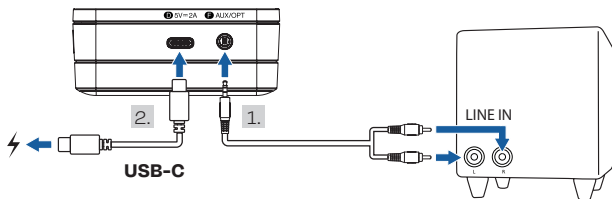


- The LED indicator of KW2 should blink cyan and white.

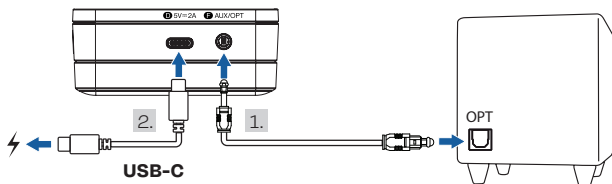


Connecting to non-KEF Subwoofers with Analogue Input

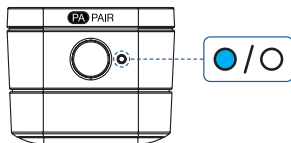
1. Connect KW2 and your subwoofer with a 3.5 mm to RCA audio cable or an optical cable.
2. Connect the USB-C power cable to the USB-C power supply.



OR



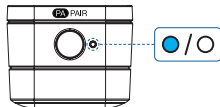
- The LED indicator of KW2 should blink cyan and white.



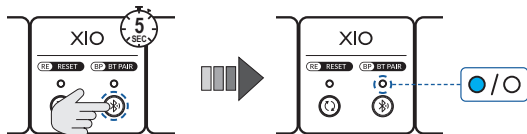
3. Power on your subwoofer.

Pairing with XIO

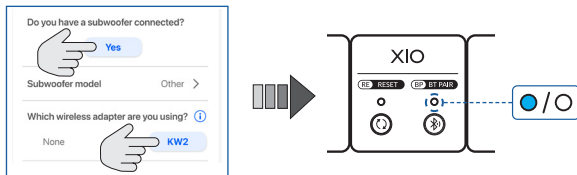
1. Ensure the subwoofer is powered on and the LED indicator of KW2 is blinking cyan and white.



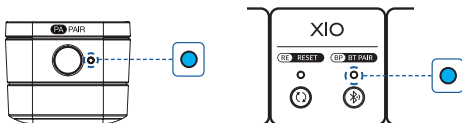
2. Ensure XIO is powered on (not in standby mode).
3. On the back panel of the XIO, press and hold the "BT Pair" button (BP) for 5 seconds. The LED light above the "BT Pair" button will then blink cyan and white.



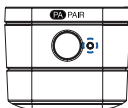
- Alternatively, you can also pair through the KEF Connect App. In the app, go to the EQ setting page. Then tap "Yes" and "KW2" in the settings shown below. The LED light above the "BT Pair" button will then blink cyan and white.








4. When pairing is successful, the LED indicator of KW2 will become solid cyan. The LED light of XIO will become solid cyan for 3 seconds and then turn off.






Basic LED Indications



Product	LED indicator	Status
KW2	 Cyan/White	Searching for and connecting to XIO
KW2	 Cyan (Blinking slowly)	Searching for and connecting to a previously connected XIO
KW2	 Cyan (solid)	Connected to XIO
KW2	 Cyan/Amber	Initiating firmware update
KW2	 Cyan/Green/ Magenta/White	Firmware update is in progress (Do not turn off the subwoofer and XIO)

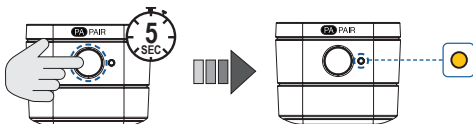


Product	LED indicator	Status
XIO	 Cyan/White	Broadcasting and allowing new KW2 to pair
XIO	 Cyan (Blinking slowly)	Broadcasting and connecting to a previously paired KW2
XIO	 Cyan (solid for 3 seconds)	KW2 is paired successfully

FAQ

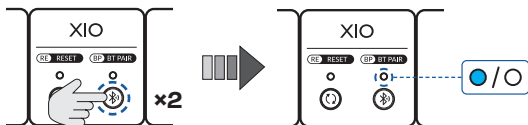
1. How to reset KW2?

- Press and hold the Pairing button on KW2 until the LED indicator blinks amber.

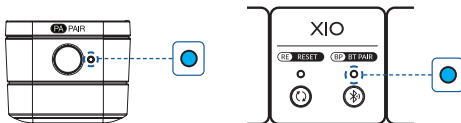


2. How to add additional KW2?

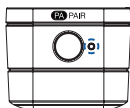
- Double press the "BT PAIR" button (BP) on the back panel of XIO. The LED light above the button will blink cyan and white.









- When pairing is successful, the LED indicator of KW2 will become solid cyan. The LED light of XIO will become solid cyan for 3 seconds and then turn off.









3. What do these LED indications mean?



XIO BT LED light	KW2 LED indicator	Status	Solution
Off	 Cyan/ White	KW2 is searching for new wireless transmitter.	<p>Ensure XIO is powered on and not in standby mode. If wireless transmitter is switched off:</p> <ul style="list-style-type: none"> Press and hold the "BT Pair" button for 5 seconds on XIO. The LED light above the button on XIO will then blink cyan and white. <p>If wireless transmitter is switched on:</p> <ul style="list-style-type: none"> Double press the "BT Pair" button on XIO. The LED light above the button on XIO will then blink cyan and white.
 Cyan/ White	 Cyan (blinking slowly)	KW2 is searching for the previously paired wireless transmitter.	Press and hold the pairing button on KW2 until the LED indicator blinks amber to reset KW2.

XIO BT LED light	KW2 LED indicator	Status	Solution
 Cyan/ White	 Red (blinking quickly)	An error has occurred.	<p>If using KEF subwoofer:</p> <ol style="list-style-type: none"> 1. Turn OFF all Bluetooth devices nearby. 2. Set the subwoofer power switch to OFF, then turn ON again. The LED indicator of KW2 will then blink cyan and white. <p>If using non-KEF subwoofer:</p> <ol style="list-style-type: none"> 1. Turn OFF all Bluetooth devices nearby. 2. Unplug and then plug again the USB-C power cable. The LED indicator of KW2 will then blink cyan and white.
 Cyan/ White	Off	The wireless transmitter is searching for KW2. But KW2 does not have power.	Ensure KW2 is connected to power.

XIO BT LED light	KW2 LED indicator	Status	Solution
 Cyan (blinking slowly)	 Cyan/ White	The wireless transmitter is trying to connect to the previously paired KW2.	Double press the "BT Pair" button on XIO. <ul style="list-style-type: none"> After successful pairing, the LED indicator of KW2 will become solid cyan. The LED light above the button on XIO will become solid cyan for 3 seconds and then turn off.
 Cyan (solid for 3 seconds)	 Cyan/ White	The wireless transmitter is connected to another KW2.	Double press the "BT Pair" button on XIO. <ul style="list-style-type: none"> The LED light above the button on XIO will blink cyan and white. After successful pairing, the LED indicator of KW2 will become solid cyan. The LED light above the button on XIO will become solid cyan for 3 seconds and then turn off.

XIO BT LED light	KW2 LED indicator	Status	Solution
 Red (blinking quickly)	 Cyan/ White	The wireless transmitter has an error and KW2 is searching for it.	<p>If using KEF subwoofer:</p> <ol style="list-style-type: none"> 1. Turn OFF all Bluetooth devices nearby. 2. Set the subwoofer power switch to OFF, then turn ON again. <p>If using non-KEF subwoofer:</p> <ol style="list-style-type: none"> 1. Turn OFF all Bluetooth devices nearby. 2. Unplug and then plug again the USB-C power cable.

For more support, please visit kef.com