

ring



Spotlight
Smart Lighting

1. Set up your Spotlight.

Download the Ring app.

The app walks you through setting up and managing your Ring Spotlight.

Search for “Ring” in one of these app stores, or visit:
ring.com/app



Set up your Ring Bridge.

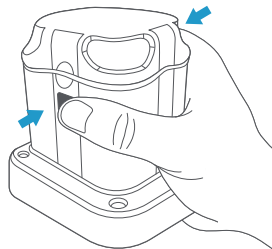
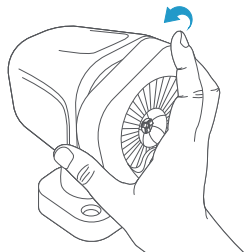
The Bridge connects your Ring Smart Lights to the Ring app and the rest of your Ring devices.

To set up your Bridge, follow the instructions in the Ring app or the Bridge user manual.



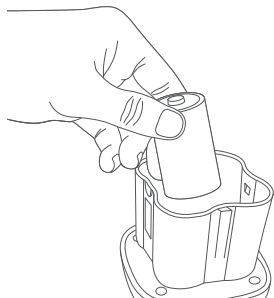
Insert the batteries.

Twist and pull off the front of the light, then press the buttons on the top and bottom of the battery compartment to open.



Insert four D Cell batteries (not included), matching the flat ends with the springs.

Line up the arrows on the lid and compartment. Press down to snap the lid back on.



Set up your Spotlight in the Ring app.

In the app, tap **Set Up a Device**.

When prompted, select **Smart Lights** and follow the in-app instructions.

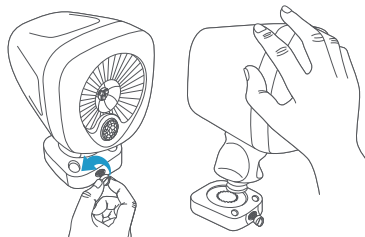
Once setup is complete, you can replace the front of your Spotlight.



2. Install your Spotlight.

Remove the base.

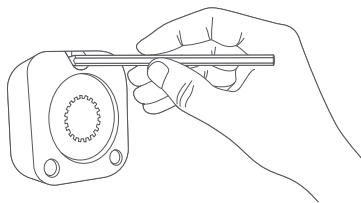
Loosen the locking screw on the base and remove the base from your Spotlight.



Mark the pilot holes.

If installing on a masonry surface, use the base as a template to mark pilot holes.

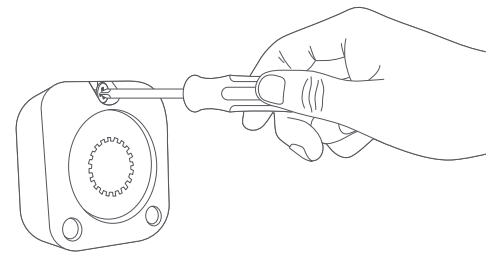
Then drill the holes and insert the included anchors.



i Your Spotlight detects motion best when mounted 8-12 feet above the ground.

Drive the screws.

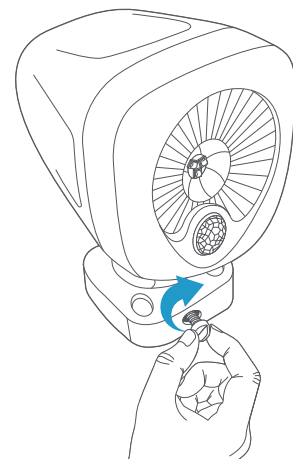
Hold the base firmly against the surface and drive the three mounting screws.



Lock it in.

Insert your Spotlight back into the base at your chosen angle and tighten the locking screw.

To adjust the vertical angle, loosen the side screw, rotate to desired position, and tighten the screw.



For additional help, visit: ring.com/help

Or give us a call...

[US 1 800 656 1918](tel:18006561918)

[Canada 1 855 300 7289](tel:18553007289)

[Worldwide +1 310 929 7085](tel:+13109297085)

For a list of all our customer support numbers,
visit: ring.com/callus

To review your warranty coverage, please visit www.ring.com/warranty.

Patents: www.ring.com/patents

© 2019 Ring LLC or its affiliates.

RING, ALWAYS HOME, and all related logos are trademarks of Ring LLC or its affiliates.

Last updated: 01/04/19