



XOU24WDZGO

24" PANEL READY UNDERCOUNTER
DUAL-ZONE WINE COOLER

LIFESTYLE REFRIGERATION



XOU24WDZGO

- Racks Fully Extend While Loaded
- Dual Zone Stores White And Red Wine At Different Temperatures
- Tri-Color Led Lighting
- Secure Lock For Each Door

24" UNDERCOUNTER WINE COOLER with OVERLAY FRAME DOOR

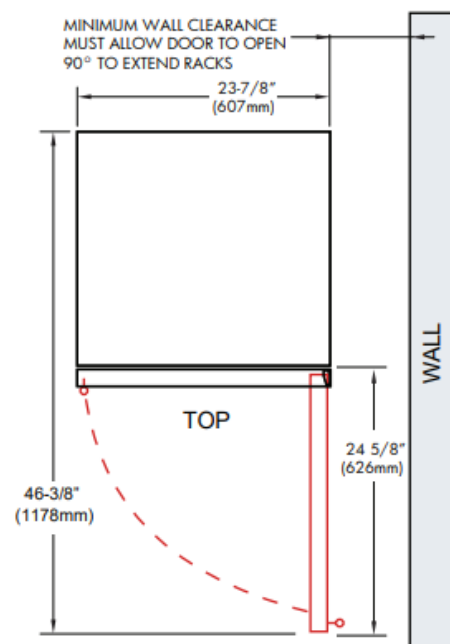
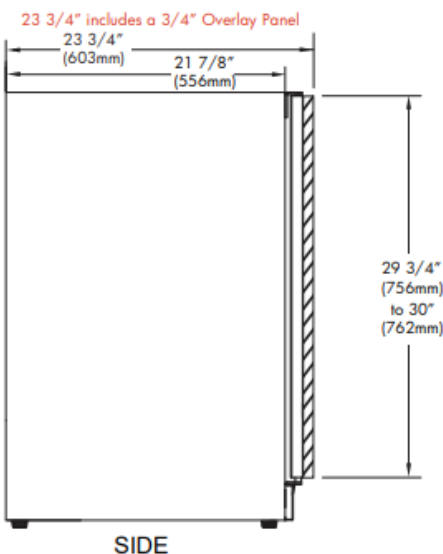
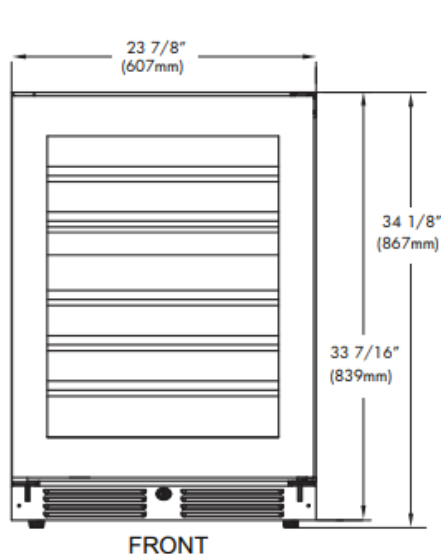
Keep 16 bottles ready to serve in the upper zone at 41° to 50° while you store 30 bottles in the lower zone at 50° to 64° . This elegant, efficient wine storage and serving center is the perfect choice for convenient entertaining. Both red and white wines are close at hand with this quiet, undercounter unit.

The XO Dual Zone Wine Cooler gives you the best of both worlds.

WORLD CLASS SERVICE | COMPREHENSIVE WARRANTIES

OUR LASTING COMMITMENT TO YOU

*Specify **R** for right hand hinge - or - **L** for left hand hinge



FEATURES

CAPACITY

Full extension smooth glide racks hold:
(16) 750ml bottles upper section at 41° to 50° F
(30) 750ml bottles lower section at 50° to 64° F

FEATURES

- Telescoping racks fully extend while loaded
- Have wine ready to serve at one temperature, while providing an ideal storage temperature for the rest.
- Tri-Color LED Lighting
- Flush Undercounter Installation design
- Independent intuitive electronic controls
- Secure Lock
- X-Active circulation ensures uniform temperature
- Low E-Glass blocks damaging UV light
- Quiet Operation 39 dBA
- Designed for residential or commercial settings

* Note: zero clearance hinges are visible just above and below the door panel

SPECIFICATIONS

ELECTRICAL

120V 60HZ 4.35 AMP*

DIMENSIONS

H 34 1/8"8
W 23 7/8"
D 23 3/4" (w 3/4" finish panel)

ROUGH IN

H 34 1/4" min
W 24"
D 24"

REFRIGERANT

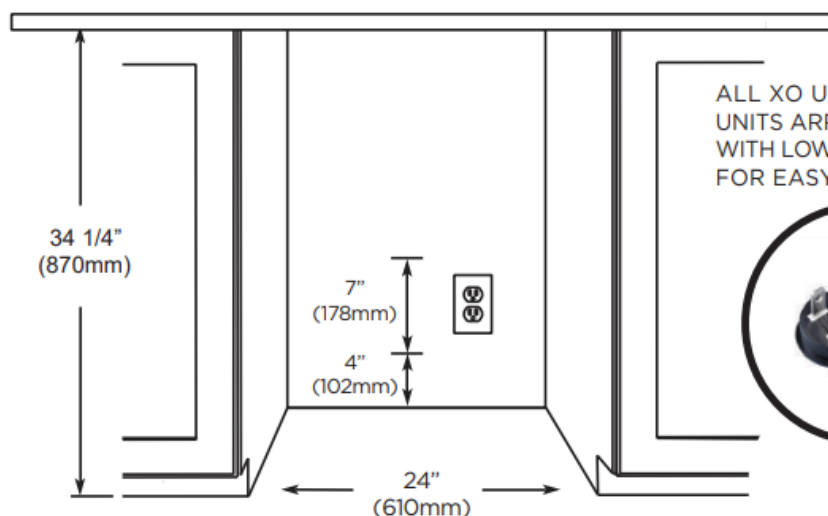
R600A



Scan the QR Code to see the installation video.



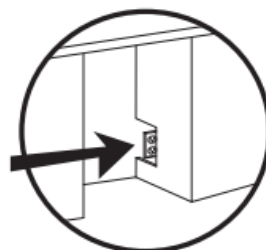
ROUGH IN DIMENSIONS



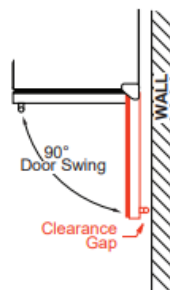
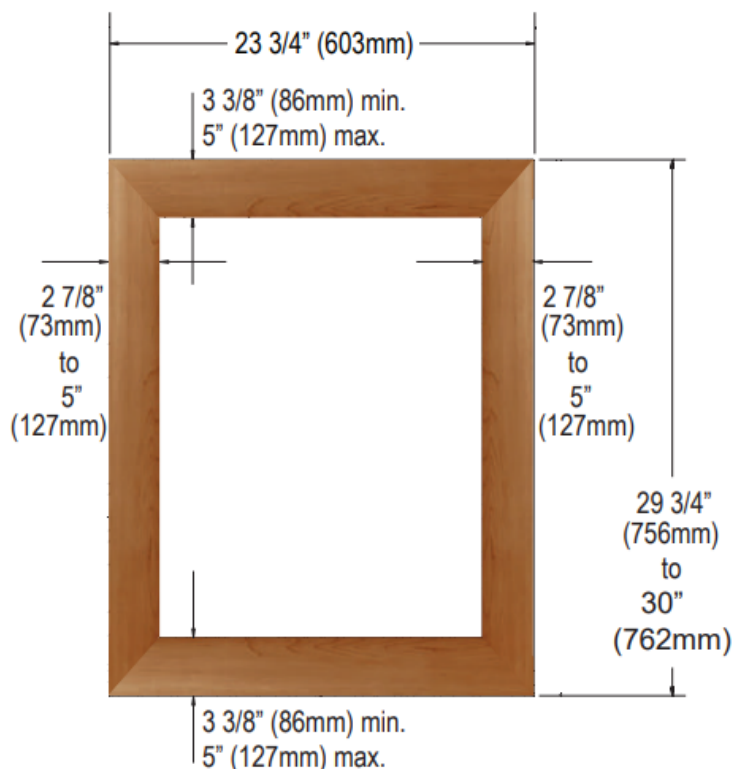
ALL XO UNDERCOUNTER UNITS ARRIVE PRE-WIRED WITH LOW PROFILE PLUGS FOR EASY INSTALLATION



NEED MORE SPACE - CUT INTO AN ADJOINING CABINET TO REACH AN OUTLET THERE

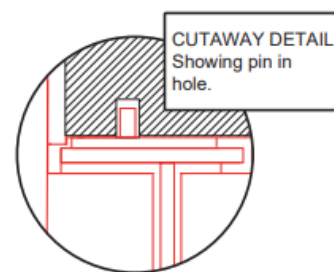


OVERLAY FRAME DIMENSIONS

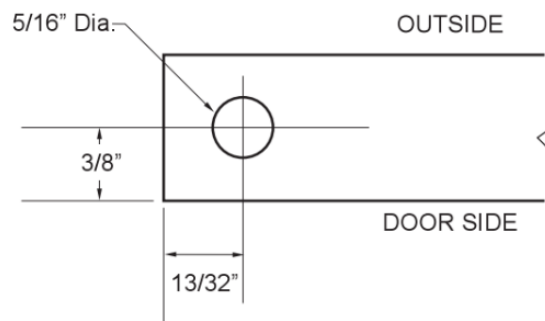


WHEN INSTALLING WITH THE HINGE SIDE NEXT TO A WALL - LEAVE ADEQUATE SPACE FOR CABINET HANDLES

DOOR MUST BE ABLE TO OPEN A MINIMUM OF 90°.



TO ACCOMMODATE THE HINGE PINS ON THE HINGE SIDE OF THE PANEL Drill a hole at least 5/16" in diameter and 1" deep into the top and bottom of the frame in the location shown.



THE DOOR STOP IS SET AT 110° BUT CAN BE RESET TO 90° OR 140°.

IF THE DOOR CANNOT OPEN FULLY YOU CANNOT EXTEND THE RACKS.

XO the next level in luxury appliances

xoappliance.com | 800.966.8300