

# Spotlight

SPOTLIGHT COLLECTION EMBODIES THE SYNTHESES OF FUNCTIONALITY AND STYLE.

## Floor Colors



Linen VTL SGLI



Beige VTL SGBE



Wheat VTL SGWH



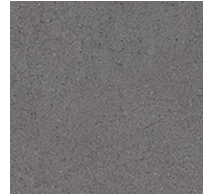
Moss VTL SGMO



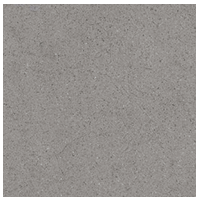
Atlantic VTL SGAT



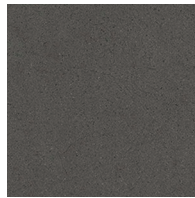
Storm Cloud VTL SGSC



Dark Grey VTL SGDG



Light Grey VTL SGLG



Anthracite VTL SGAN

## Wall Colors



Snow Glossy VTL SGSN



Sand Glossy VTL SGSA



Tan Glossy VTL SGTA



Sky Glossy VTL SGSK



Mist Glossy VTL SGMI



Smoke Glossy VTL SGSM



Fog Glossy VTL SGFO



Pebble Glossy VTL SGPE



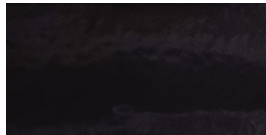
Twilight Grey Glossy VTL SGTW



Rain Glossy VTL SGRA



Storm Glossy VTL SGST



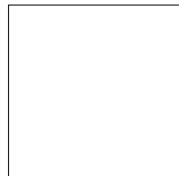
Caviar Glossy VTL SGCA

## Sizes



24" x 48" Rectified 10mm  
Bush Hammered and Matte

- Linen
- Beige
- Wheat
- Moss
- Atlantic
- Storm Cloud
- Dark Grey
- Light Grey
- Anthracite



24" x 24" Rectified 10mm  
Bush Hammered,  
Chiseled and Matte

- Linen
- Beige
- Wheat
- Moss
- Atlantic
- Storm Cloud
- Dark Grey
- Light Grey
- Anthracite



12" x 24" Rectified 10mm  
Bush Hammered and  
Matte

- Linen
- Beige
- Wheat
- Moss
- Atlantic
- Storm Cloud
- Dark Grey
- Light Grey
- Anthracite



12" x 12" Rectified 10mm  
Bush Hammered,  
Chiseled and Matte

- Linen
- Beige
- Wheat
- Moss
- Atlantic
- Storm Cloud
- Dark Grey
- Light Grey
- Anthracite



6" x 24" Glossy 8mm

- Snow
- Sand
- Tan
- Sky
- Mist
- Smoke
- Fog
- Pebble
- Twilight Grey
- Rain
- Storm
- Caviar



3" x 12" Glossy 8mm

- Snow
- Sand
- Tan
- Sky
- Mist
- Smoke
- Fog
- Pebble
- Twilight Grey
- Rain
- Storm
- Caviar

# SPOTLIGHT

## Field Tiles\*

SIZE	THICKNESS	FINISH
24" x 48" Rectified	10mm	Bush Hammered
24" x 48" Rectified	10mm	Chiseled
24" x 48" Rectified	10mm	Matte
24" x 24" Rectified	10mm	Bush Hammered
24" x 24" Rectified	10mm	Matte
12" x 24" Rectified	10mm	Bush Hammered
12" x 24" Rectified	10mm	Chiseled
12" x 24" Rectified	10mm	Matte
12" x 12" Rectified	10mm	Bush Hammered
12" x 12" Rectified	10mm	Matte
6" x 24"	8mm	Glossy
3" x 12"	8mm	Glossy

\*Not all sizes/trims are available in all colors and finishes

## Mosaics & Coordinating Trims\*

SIZE	THICKNESS	FINISH
2" x 2" Mosaic	10mm	Bush Hammered
2" x 2" Mosaic	10mm	Matte
6" x 24" Bullnose	8mm	Glossy
6" x 12" Cove Base	10mm	Matte
3" x 12" Bullnose	10mm	Matte

## Product Characteristics

Breaking Strength	Range of $\geq 300$ lb/ft 2 to $\geq 400$ lb/ft 2
Chemical Resistance	Resistant
DCOF	$\geq 0.42$ Wet
Deep Scratch Resistance - Unglazed	Not Resistant
Frost Resistance	Resistant
Mohs Hardness - EN101	Not Applicable
Water Absorption	$\leq 0.4\%$
Certifications	Bureau Veritas, Greenguard, LEED, Green Squared
Country of Origin	USA
Shade Variation Code	v2

## Material

Porcelain



V2 Variation



Recommend an offset pattern  $\leq 33\%$



Water Absorption:  $\leq 0.4\%$



Made in USA



Ready Ship and Stock



Bureau Veritas, Greenguard, Leed, Green Squared Certified



Frost Resistant



DCOF  $\geq 0.42$



## Request samples.

[www.vitlsurfaces.com](http://www.vitlsurfaces.com)  
[samples@vitlsurfaces.com](mailto:samples@vitlsurfaces.com)



VITL  
SURFACES  
COMMERCIAL