

Willoughby - 12mil

LVT - Woods



Beige Oak



Weathered Brown



Brown Oak



Walnut



Hickory



Weathered Black



Medium Gray Oak



Light Gray Oak

LVT - Tiles



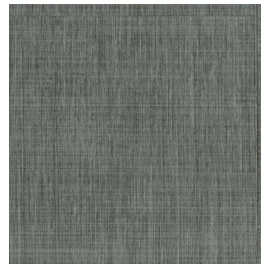
Fabric Beige



Stone Gray



Stone Taupe



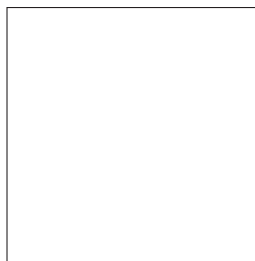
Fabric Gray

Size



6" x 48" x 2mm

- Beige Oak
- Weathered Brown
- Brown Oak
- Walnut
- Hickory
- Weathered Black
- Medium Gray Oak
- Light Gray Oak



18" x 18" x 2mm

- Fabric Beige
- Stone Gray
- Stone Taupe
- Fabric Gray

WILLOUGHBY - 12MIL



Product Features

Construction	Dimensions	6" x 48" 18" x 18"
	Overall Thickness	0.080 in.
	Wear Layer Thickness	12 mil
	Raw Material	Solid Vinyl Tile
	Edge Detail	Micro-beveled edges and ends
Installation Method:	Dry-Back Traditional LVT - Glue Down	
Recommended Adhesive	TEC Flexera TEC Flexera HT	Bostik LVT-Lock+ Bostik Multi-Lock Bostik Uni-Lock
Warranty	2.0mm: 7-year Commercial/15-year Residential	
Country of Origin	USA	

Technical Data

Thickness	ASTM F386	Nominal ±0.005in
Wear Layer Thickness (2.5 mm)	ASTM F410	0.020in (0.5mm) minimum for Commercial use
Size	ASTM F2421/F2055	±0.016 in per linear foot
Squareness	ASTM F2421/F2055	0.010 in. maximum
Residual Indentation	ASTM F1914	Average less than 8%
Dimensional Stability	Internal	±0.018in. per linear ft. MD, <0.012 in per lin ft. AMD
Chemical Resistance	ASTM F925	No more than slight change in surface dulling, attack or staining
Resistance to Light	ASTM F1515	ΔE < 8
Resistance to Heat	ASTM F1514	ΔE < 8
Fire Test - Flame Spread	ASTM E648	0.45 W/cm2 or more Class 1
Fire Test - Smoke Evolution	ASTM E48	450 or less
Static Load Resistance @250	ASTM F 970	<0.005in
Fire Test Data - Canada 2.0mm	Flame Spread - 0 Smoke Developed - 50	CAN/ULC S-102.2
ADA Standards for Accessible Design	Chapter 3, Section 302.1	Meets

Compliance

Low VOC emissions and FloorScore certified
Free of ortho-phthalates and heavy metals.



Scan for additional product details

Request samples.

www.vitlsurfaces.com
samples@vitlsurfaces.com



VITL
SURFACES
COMMERCIAL