



# HALO<sup>®</sup>

ML Collection

LED Modular Recessed Lighting System

# Introduction

## The ML Concept

The HALO™ Modular LED recessed lighting system provides a broad range of lighting solutions ideal for residential and commercial use including single and multi-family dwellings, hospitality, retail, office and institutional spaces. The ML family delivers the energy savings, long life and sustainability of LED with excellent optical control providing cost effective and visually comfortable lighting.

Apertures include full cone reflectors, baffles, open and lens wall washers and directional styles. These combinations provide useful distributions including ambient, task, wall wash and accent facilitating a balanced lighting layout. Choose from round or square forms and a broad range of finishes to complement any décor.

LED module and trim combinations are compatible with industry standard 4, 5 and 6 inch housing types and can be used for new construction as part of the electrical rough-in or install from below - ideal for remodeling applications. They can also be retrofit into existing housings enabling older light-source technologies to be easily upgraded to LED.

With a color rendering index (CRI) of 90 minimum the ML family delivers excellent color quality and can be specified in field selectable 2700, 3000, 3500, 4000 and 5000K correlated color temperature (CCT). It can be used to meet the IECC and the State of California Title 24 high efficacy luminaire compliance. Consult the California Energy Commission Title 20 Appliance Efficiency Database for current listings. Meets the State of California voluntary lamp standards. Most combinations are ENERGY STAR® listed, reference qualified product listing.



*Innovation you can rely on*



The US Environmental Protection Agency's ENERGY STAR® program is designed to identify and promote energy efficient products and buildings. Cooper Lighting Solutions is proud to be an industry leader of certified products including many of our HALO recessed downlights. [www.energystar.gov](http://www.energystar.gov)



International Energy Conservation Code (IECC) establishes energy-related heating, cooling, water heating, electrical and lighting system standards for residential, multi-family, and commercial buildings. [www.iccsafe.org](http://www.iccsafe.org)



HALO luminaires are manufactured and designed in accordance with the specifications outlined in Underwriters Laboratories Standard for Safety – Luminaires 1598. These luminaires additionally comply with the applicable requirements found within the National Electrical Code (NEC), NFPA 70.

Products bearing the cULus Listed marks indicate that the luminaires have been evaluated by Underwriters Laboratories, and are found to be compliant with the product specific requirements for the United States and Canada. [www.ul.com](http://www.ul.com)



Cooper Lighting Solutions supports state codes enforcing more stringent and environmentally protective standards such as California Energy Commission's Title 24 Energy Efficiency standards. [www.energy.ca.gov/title24](http://www.energy.ca.gov/title24)



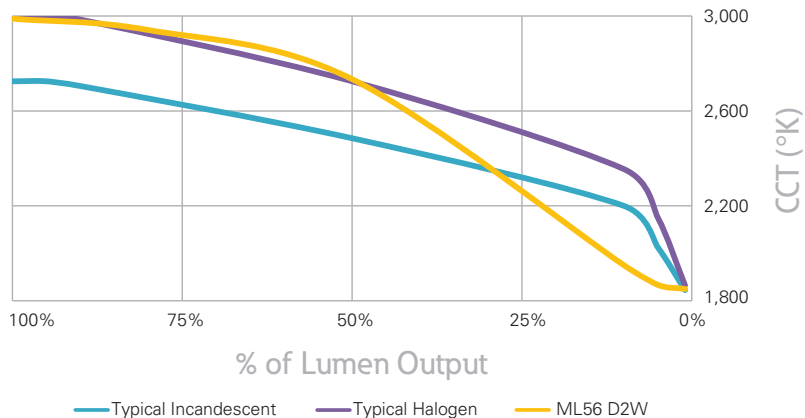
RoHS Directive - Restriction of Hazardous Substances. This global initiative seeks to eliminate hazardous materials in products. Key materials being eliminated from products through RoHS include: cadmium, mercury and lead among others.

## D2W™

Select ML combinations are available in the D2W dim-to-warm option mimicking the black body dimming response of tungsten halogen lamps warming the output from approximately 3000 to 1800K or 2700 to 1800K CCT.

- Dims smoothly from 3000K to 1800K or 2700 to 1800K creating a rich, warm glow within the space.
- Maintains 90 CRI throughout the dimming range.
- Available in 600 lumen output.
- Use the same 120V dimmers as with any of the ML4 and ML56 LED modules.

### Dimming Profile



# D2W™



# ML4

## 4-inch LED downlighting system

The ML4 system is comprised of an LED module that can be installed in a canless solution or a retrofit solution. This compact LED module installs from below the ceiling into either a 3-3/4" opening or a 4-inch line voltage housing suitable for 2x6 residential framing or shallow plenum commercial construction.

For even tighter spacing use the canless installation or an ultra-shallow install from below housing which are suitable for 2x4 framing. For ceiling types that make recessed lighting difficult, like concrete pour, round and square surface cylinders support direct attachment to finished ceiling surfaces.

The ML4 delivers powerful beams of light providing optical control and high color quality.





housing



module



trim



Simple, compact, accurate

**ML4 Retrofit**

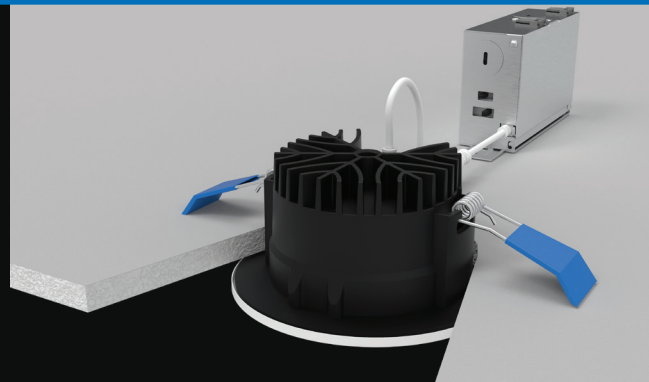
**ML4-DM**



module & jbox/driver



trim



# ML4 Module / Optic

Balance efficiency with optical control

The ML4 module combines a chip on board LED array, driver and heat sink into an integrated light engine providing a highly efficient and reliable source of light. The precision molded optic organized the source flux producing tightly controlled and useful beams of light.

The ML4 module is delivered with a 40° flood optic pre-installed and is suitable for a wide range of applications. Alternate beam patterns, 25° narrow flood, 55° wide flood, and 25° asymmetric wall wash are available as accessories and are easily interchangeable in the field. Each optic includes a media holder integral with the optic and accepts industry standard 2" diameter lenses provided additional creating control.



## ML4 optics

**TIR4D25NFL**  
25 degree  
narrow flood



**TIR4D40FL**  
40 degree  
flood



**TIR4D55WFL**  
55 degree  
wide flood



**TIR4D25AWW**  
25 degree narrow flood  
asymmetric / wall wash



**TIR45MH12PK**  
replacement  
media holder



media holder with lens  
installed on optic



## ML4 Retrofit Ordering Information

A complete luminaire consists of a fixture fitting + trim, order separately.

Catalog Number	Description	Accessories
ML4D10FL9FS1E	4" Retrofit, 1000lms, 5CCT selectable, 90CRI, 40° optic, 120V, LE/TE 5% Dim	<b>TIR4D25NFL</b> = 25° narrow flood optic <b>TIR4D40FL</b> = 40° flood optic <b>TIR4D55WFL</b> = 55° wide flood optic <b>TIR4D25AWW</b> = 25° narrow flood asymmetric wall wash optic <b>TIR45MH12PK</b> = replacement media holder, package of 12 <b>L100 Series</b> = 2.0" lens and filters, see spec sheet
ML4D10FL9FS1E010	4" Retrofit, 1000lms, 5CCT selectable, 90CRI, 40° optic, 120-277V 0-10V 5% Dim	
ML4D08FL9FS1E	4" Retrofit, 800lms, 5CCT selectable, 95CRI, 40° optic, 120V LE/TE 5% Dim	
ML4D06FLD2W1E	4" Retrofit, 600lms, Selectable D2W, 90CRI, 40° optic 120V LE/TE 5% Dim	



## ML4-DM Ordering Information

A complete luminaire consists of a fixture fitting + trim, order separately.

Catalog Number	Description	Accessories
ML4DM10LSFL9FS1E	4" Canless, Lumen Select(600/800/1000lms), 5CCT selectable, 90CRI, 40° optic, 120V, LE/TE 5% Dim	<b>TIR4D25NFL</b> = 25° narrow flood optic <b>TIR4D40FL</b> = 40° flood optic <b>TIR4D55WFL</b> = 55° wide flood optic <b>TIR4D25AWW</b> = 25° narrow flood asymmetric wall wash optic <b>TIR45MH12PK</b> = replacement media holder, package of 12 <b>L100 Series</b> = 2.0" lens and filters, see spec sheet
ML4DM10LSFL9FSE010	4" Canless, Lumen Select(600/800/1000lms), 5CCT selectable, 90CRI, 40° optic, 120-277V 0-10V 5% Dim	
ML4DM08LSFL9FS1E	4" Canless, Lumen Select(400/600/800lms), 5CCT selectable, 95CRI, 40° optic, 120V LE/TE 5% Dim	
ML4DM06FLD2W1E	4" Canless, 600lms, Selectable D2W, 90CRI, 40° optic 120V LE/TE 5% Dim	



# ML4 Trims

## The finishing touch

TL4 series trims are offered in four luxurious electro-plated finishes; brushed nickel, oil rubbed bronze, brushed copper and German bronze. Use to complement your thoughtfully selected interior finishes.

The TL4 trims are available in three trim types; open, lens, and lens wall wash.

The trims are attached by four powerful rare earth Neodymium magnets; they float on a bubble of magnetic flux keeping the trims held securely in place.



white



black



german bronze



brushed copper



brushed nickel



oil rubbed bronze

# Open pinhole

The round and square open pinhole apertures are optimized for use with beam forming optics delivering full output with visual cutoff and brightness control. Magnetic attachment makes installation a snap and allows for minor adjustment accommodating real-world construction tolerances. Available in painted and electro-plated finishes. Damp location listed.

## TL41R

2" round open pinhole



**TL41RMW**  
matte white flange



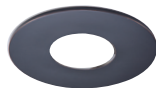
**TL41RBN**  
brushed nickel flange



**TL41RBCu**  
brushed copper flange



**TL41RMB**  
matte black flange



**TL41RORB**  
oil rubbed bronze flange



**TL41RGB**  
german bronze flange

## TL42S

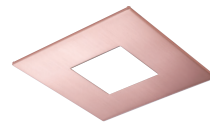
2" square open pinhole



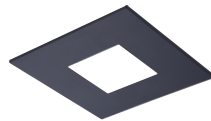
**TL42SMW**  
matte white flange



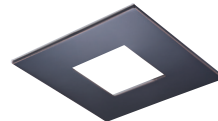
**TL42SBN**  
brushed nickel flange



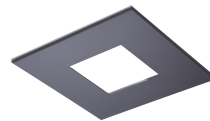
**TL42SBCu**  
brushed copper flange



**TL42SMB**  
matte black flange



**TL42SORB**  
oil rubbed bronze flange



**TL42SGB**  
german bronze flange

# Lens pinhole

The round and square lens pinhole apertures soften the light with an integral diffuse lens. Magnetic attachment makes installation a snap and allows for minor adjustment accommodating real-world construction tolerances. Available in painted and electro-plated finishes; the lens frame is available in white or black and color coordinated with the flange finish. Wet location listed.

## TL43R

2" round lens pinhole



**TL43R2GMWWB**  
matte white flange,  
white lens frame



**TL43R2GMWBB**  
matte black flange,  
black lens frame



**TL43R2GBNBB**  
brushed nickel flange,  
black lens frame



**TL43R2GBCuBB**  
brushed copper flange,  
black lens frame



**TL43R2GMBBB**  
matte black flange,  
black lens frame



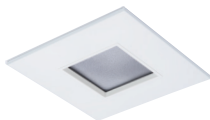
**TL43R2GORBBB**  
oil rubbed bronze flange,  
black lens frame



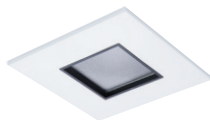
**TL43R2GGBBB**  
german bronze flange,  
black lens frame

## TL44S

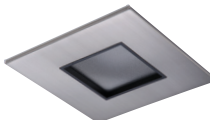
2" square lens pinhole



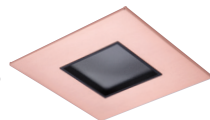
**TL44S2GMWWB**  
matte white flange,  
white lens frame



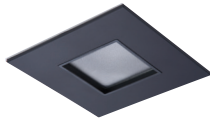
**TL44S2GMWBB**  
matte black flange,  
black lens frame



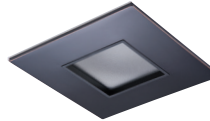
**TL44S2GBNBB**  
brushed nickel flange,  
black lens frame



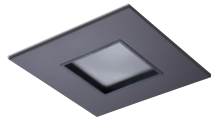
**TL44S2GBCuBB**  
brushed copper flange,  
black lens frame



**TL44S2GMBBB**  
matte black flange,  
black lens frame



**TL44S2GORBBB**  
oil rubbed bronze flange,  
black lens frame



**TL44S2GGBBB**  
german bronze flange,  
black lens frame

## Conical Reflector

The round lens conical reflector softens the light with an integral diffuse lens. Magnetic attachment makes installation a snap and allows for minor adjustment accommodating real-world construction tolerances. Available in white finish. Wet location listed.

### TL40R

3-1/2" round conical reflector



#### TL40R2GMW

matte white flange,  
diffuse lens white reflector

## Lens wall wash

The round and square lens wall wash apertures use the unique asymmetric optic that redirects light through a linear spread lens providing smooth vertical illumination. Use to light walls, paintings and textured surfaces including stone, masonry and wood. Magnetic attachment makes installation a snap and allows for minor adjustment accommodating real-world construction tolerances. The lens frame is available in white or black and color coordinated with the flange finish. Wet location listed.

### TL45R

2" round lens wall wash pinhole



#### TL45R6GMWWB

matte white flange, white lens frame



#### TL45R6GMWBB

matte white flange, black lens frame

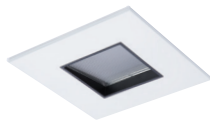
### TL46S

2" square lens wall wash pinhole



#### TL46S6GMWWB

matte white flange, white lens frame

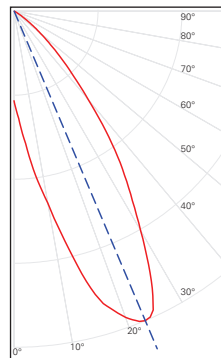


#### TL46S6GMWBB

matte white flange, black lens frame

### Candle Power Distribution

TIR4D25AWW asymmetric wall wash optic



## Providing Accents

The asymmetric / wall wash optic combined with the open and lens pinhole apertures delivers a directional beam of light effective for accenting objects of interest including art and architecture.

The aiming angle is pre-set at 22.5 degrees, a useful mid-point adjustment, eliminating the need for individual elevation adjustment. This simple yet effective lighting technique provides contrast ratios creating visual interest and drama in your environments.



TIR4D25AWW  
25 degree narrow flood  
asymmetric / wall wash

Installed in ML4-DM module.

Complete unit with  
TL46S6GMWBB installed.



# Housings

## ML4 Housing Compatibility

### Halo LED

H995ICAT, H995RICAT

### Halo Shallow Housings

H99ICAT, H99RTAT, H99TAT, H1499ICAT, H1499RTAT, H1499T75,  
H1499TAT, E4ICATSB, E4TATSB, E4RTATSB

### Halo Ultra-Shallow Housings

H245ICAT, H245RICAT

### Halo Surface Mount Housings

HS4RMW, HS4RMB, HS4SMW, HS4SMB

Halo  
4" LED  
housings



H995ICAT



H995RICAT



# Competitor Housing Compatibility

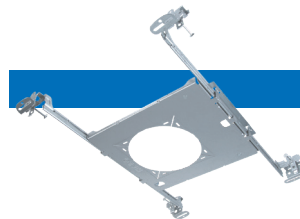
The ML4 comes with a dedicated LED connector for High Efficacy luminaire compliance (California Title 24, International Energy Conservation Code) and is cULus Listed for installation with Halo® recessed LED housings (H245ICAT, H245RICAT, H995ICAT, H995RICAT).

The ML4 is also compatible with a E26 Edison screw base adapter to accommodate many industry standard screw base housings. The series is cULus Listed and UL Classified for retrofit in Halo and others housings.



## 4" Housings

<b>Utilitech</b> CR04ICAT	<b>Lithonia Lighting®</b> L3, L3R	<b>Juno®</b> TC1, TC1R
<b>Thomas®</b> PS4	<b>Commercial Electric™</b> HBR2000B	<b>Progress Lighting®</b> P830-TG, P832-TG



## HL4RSMF

New construction rough-in frame for use with Halo 4-inch H245RICAT, H99RTAT, H1499RICAT, and E4RTATSB remodeler housings.

**Note:** Remodeler housings are installed after ceiling is installed.

## Housings

### Halo LED 4-inch

H995ICAT= 4" LED, Insulated Ceiling, Air-Tite, New Construction Housing  
H995RICAT= 4" LED, Insulated Ceiling, Air-Tite, Remodel Housing

### Halo Ultra-Shallow LED 4-inch

H245ICAT= 4" LED, Insulated Ceiling, Air-Tite, Ultra-Shallow New Construction Housing  
H245RICAT= 4" LED, Insulated Ceiling, Air-Tite, Ultra-Shallow Remodel Housing

### Halo Standard Housings 4-inch\*

H99ICAT= 4" IC, Air-Tite, Shallow New Construction Housing  
H99TAT= 4" Non-IC, Air-Tite, Shallow New Construction Housing  
H99RTAT= 4" Non-IC, Air-Tite, Shallow Remodel Housing  
E4ICATSB= 4" IC, Air-Tite, Shallow New Construction Housing  
E4TATSB= 4" Non-IC, Air-Tite, Shallow New Construction Housing  
E4RTATSB= 4" Non-IC, Air-Tite, Shallow Remodel Housing

### Halo Low Voltage Housings 4-inch\*

H1499ICAT= 4" IC, Air-Tite, New Construction Housing, 120V - 12V Low Voltage MR16  
H1499TAT= 4" Non-IC, Air-Tite, Shallow New Construction Housing, 120V - 12V Low Voltage MR16  
H1499RTAT= 4" Non-IC, Air-Tite, Shallow Remodel Housing, 120V - 12V Low Voltage MR16  
H1499T75= 4" Non-IC, New Construction Housing, 120V/277V - 12V Low Voltage, MR16

## Accessories

T24HWKIT= Title 24 Cable harness kit used to convert incandescent and low voltage housings to LED.  
HL4RSMF= 4" round and square new construction rough-in frame\*\*



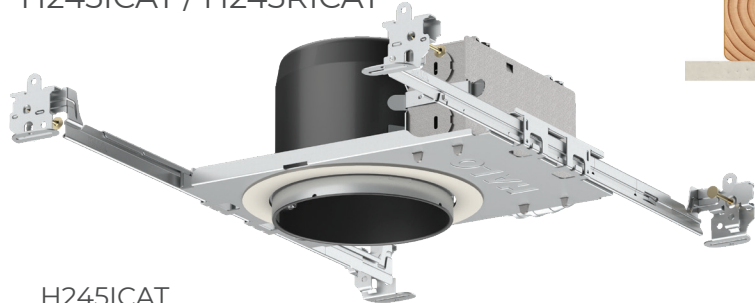
\*Use T24HWKIT, Title 24 Cable Harness Kit, to convert incandescent and low voltage housings to LED.

\*\*Compatible with H245RICAT, H99RTAT, H1499RICAT, and E4RTATSB remodeler housings.

Juno®, Lithonia Lighting®, Thomas® Lighting, Progress® Lighting and Commercial Electric™ and their product brand names, where identified above, are tradenames or trademarks of each respective company and Cooper Lighting Solutions makes no representations on these trademarks.

# Ultra-shallow housings

H245ICAT / H245RICAT



## H245ICAT

- Suitable for 2x4 framing and shallow plenum construction
- Housing adjusts for 1/2" to 1-1/4" ceiling thickness
- Suitable for direct contact with air-permeable insulation and air tight
- Captive, pre-installed Got Nail!™ bar hangers adjust from 6" to 24", integral nail penetrates standard and engineered lumber
- Slide-N-Side™ non-metallic (NM) wire traps allow wiring outside the box, 4-port push wire nuts for quick and reliable mains voltage connections



## H245RICAT

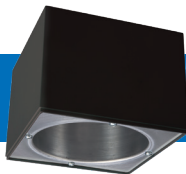
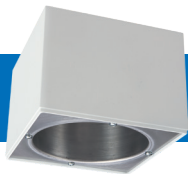
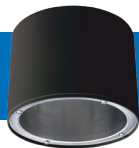
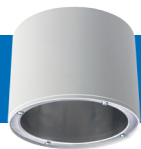
- Suitable for 2x4 framing or shallow plenum construction
- Compatible with 3/8" to 3/4" ceiling thickness
- Retractable mounting springs are designed for easy installation and removal for service or splice inspection
- Quick Connect™ remodel wiring tray increases installation speed and reliability
- Hinged and captive door on junction box allows for easy access
- Insulated ceiling listed and Air-Tite™



# Surface Housing

Square and round surface mount

- round or square housing mounts to junction box
- spider plate allows alignment of square with architecture
- exclusively for use with Halo ML4 LED module and trims
- finishes: matte white and matte black



## Surface Mount Housing

HS4R= Surface round, 120-277V  
HS4S= Surface square, 120-277V

## Finish

MW=Matte white  
MB=Matte black

# ML56

## LED downlighting system

The HALO ML56 LED downlight collection is comprised of LED modules with 5" and 6" trims. ML56 LED modules are offered with field selectable 900, 1200 and 1500 lumens. The ML56 LED series offers a versatile collection of energy-efficient LED downlights for general lighting in commercial and residential applications. Install in either new construction or retrofitting existing 5" and 6" compatible housings (Edison screw base adapter included). HALO LED ML56 collection features excellent color (90 & 95CRI) and offers field selectable five color temperatures (2700K, 3000K, 3500K, 4000K and 5000K).





Housing + Module\* + Trim  
= Complete luminaire



*high performance for volumetric spaces*

\*E26 Edison Screw Base Adapter (included for retrofit of non-LED housings).

# ML56 Module

## LED light engine

The ML56 light modules are integrated LED engines that include a LED chip package, LED driver, heat sink, and lens in a modular design that allows interchangeable use with designated ML56 5" and 6" LED trims.

The ML56 light module design features an inside frost diffusing lens that looks like a traditional lamp for visual comfort and aesthetic familiarity. The diffusing lens provides uniform illumination.



## ML56 Ordering Information

A complete luminaire consists of a housing, LED module and trim. Order separately.

### LED Modules

**ML5615LSVWFL9FS1E**= 5"/6" Retrofit, Lumen Select (650/900/1100lms), 5CCT selectable, 90CRI, Soft focus lens, 120V LE/TE 5% Dim

**ML5612LSVWFL95FS1E**= 5"/6" Retrofit, Lumen Select (450/650/900lms), 5CCT selectable, 97CRI, Soft focus lens, 120V LE/TE 5% Dim

**ML5615LSVWFL9FSE010**= 5"/6" Retrofit, Lumen Select (650/900/1100lms), 5CCT selectable, 90CRI, Soft focus lens, 120V-277V 0-10V 5% Dim

**ML5609VWFLD2W1E**= 5"/6" Retrofit, 650lms, Selectable D2W, 90CRI, Soft focus lens, 120V LE/TE 5% Dim

Field interchangeable TIR optics 25, 40, 55, 75 degree distribution patterns and soft focus lens. Ships with soft focus lens.

### TIR Optics



Soft Focus Lens  
(included)



**TIR56NFL25**  
25° Narrow Flood Optic














**TIR56FL40**  
40° Flood Optic



**TIR56WFL55**  
55° Wide Flood Optic



**TIR56VWFL75**  
75° Very Wide Flood Optic

	 5 selectable CCT colors 2700K • 3000K • 3500K 4000K • 5000K	 dim-to-warm <small>option included</small> 1800K - 3000K 1800K - 2700K	 selectable lumens 650/900/1100 Lumens	 selectable lumens 900/1200/1500 Lumens	 selectable lumens 450/650/900 Lumens	 selectable lumens 600/900/1200 Lumens	 650 Lumens	 900 Lumens	 90 CRI	 97 CRI	 DIMMABLE
ML5615LSVWFL9FS1E	✓		✓	✓					✓		5% Phase
ML5612LSVWFL97FS1E	✓				✓	✓				✓	5% Phase
ML5615LSVWFL9FSE010	✓		✓	✓					✓		5% 0-10V
ML5609VWFLD2W1E		✓					✓	✓	✓		5% Phase
			Soft Focus Lens	TIR Optics	Soft Focus Lens	TIR Optics					





**CHAMPS**  
SPORTS



Richard Cadan Photography  
[www.richardcadan.com](http://www.richardcadan.com)

# Trims

## The finishing touch

Multiple 5" and 6" baffle, reflector, and eyeball options allow the Halo ML56 LED downlighting system to be used in a variety of interior spaces. Choose the desired trim size, finish, and style to meet the needs of the application.

- Reflector and baffle trims are wet location listed for shower applications. Eyeball trims are damp location listed.
- Reflector and baffle trims make the ML56 and any compatible housing Air-Tite.
- Consult ML56 LED light module specification sheet for applicable trim listings.

### Trims

#### **590 Series - 5" LED Trims**

**591WB=5"** LED trim, polymer "dead-front", shallow white baffle & flange – shallow and standard housings (For use with 600 Series LED light modules only)

**592SC=5"** LED trim, specular reflector & white flange

**592H=5"** LED trim, haze reflector & white flange

**592W=5"** LED trim, white reflector & flange

**593WB=5"** LED trim, white micro-step baffle & flange

**593BB=5"** LED trim, black micro-step baffle & white flange

**593SNB=5"** LED trim, satin nickel micro-step baffle & flange

**593TBZB=5"** LED trim, tuscan bronze micro-step baffle & flange

**594WB=5"** LED directional trim, white eyeball, baffle & flange – shallow and standard housings

**594SNB=5"** LED directional trim, satin nickel eyeball, baffle & flange – shallow and standard housings

**594TBZB=5"** LED directional trim, tuscan bronze eyeball, baffle & flange – shallow and standard housings

**596WB=5"** LED trim, white shallow baffle & flange – shallow and standard housings

#### **690 Series - 6" LED Trims**

**691WB=6"** LED trim, polymer "dead-front", white shallow baffle & flange – shallow and standard housings (For use with 600 Series LED light modules only)

**692SC=6"** LED trim, specular reflector & white flange

**692H=6"** LED trim, haze reflector & white flange

**692W=6"** LED trim, white reflector & flange

**693WB=6"** LED trim, white micro-step baffle & flange

**693BB=6"** LED trim, black micro-step baffle & white flange

**693SNB=6"** LED trim, satin nickel micro-step baffle & flange

**693TBZB=6"** LED trim, tuscan bronze micro-step baffle & flange

**694WB=6"** LED directional trim, white eyeball, baffle & flange – shallow and standard housings

**694SNB=6"** LED directional trim, satin nickel eyeball, baffle & flange – shallow and standard housings

**694TBZB=6"** LED directional trim, tuscan bronze eyeball, baffle & flange – shallow and standard housings

**696WB=6"** LED trim, white shallow baffle & flange – for use with shallow and standard housings

### Accessories

**ML56CLIP**=Friction clip mounting kit - for retrofitting non-torsion spring housings, 6" clips\*

#### **Wall Wash Kits**

**ML5WW** = 5" Wall Wash kit

**ML6WW** = 6" Wall Wash kit

#### **Oversize Trim rings**

**TRM590WH=5"** LED oversize trim ring for use with 59\* series trims, white 6.3" I.D., 7.5" O.D. Ring slips over LED trim. Inset design allows 5" trim to fit into oversize ring for an even trim surface

**TRM690WH=6"** LED oversize trim ring for use with 69\* series trims, white 6.9" I.D., 9.5" O.D. Ring slips over LED trim. Inset design allows 6" trim to fit into oversize ring for an even trim surface

**TRM590WH=5"** LED oversize trim ring for use with 59\* series trims, white 6.3" I.D., 7.5" O.D. Ring slips over LED trim. Inset design allows 5" trim to fit into oversize ring for an even trim surface

**TRM690WH=6"** LED oversize trim ring for use with 69\* series trims, white 6.9" I.D., 9.5" O.D. Ring slips over LED trim. Inset design allows 6" trim to fit into oversize ring for an even trim surface

#### **TIR Optics**

**TIR56NFL25=25°** narrow flood optic

**TIR56FL40=40°** flood optic

**TIR56WFL55=55°** wide flood optic

**TIR56VWFL75=75°** very wide flood optic

\*ML56CLIP is compatible with 6" baffle and reflector trims only (691, 692, 693, 696 series). For eyeball trim (694 series) use ML7RAB retrofit adapter band.

## Reflectors

Create wide light patterns and maximize the efficiency of the light source.



## Eyeballs

Provide precise, variable directional lighting. Useful for directing to accent wall hangings, mantels, and task areas



## Baffles

Trap and shape light to minimize aperture glare, reduce ceiling brightness, and narrow the focus of the downlighting beam.



## Wall Wash Kit

Field snap-in, rotatable Wall Wash directional trims available in both 5" and 6" versions.

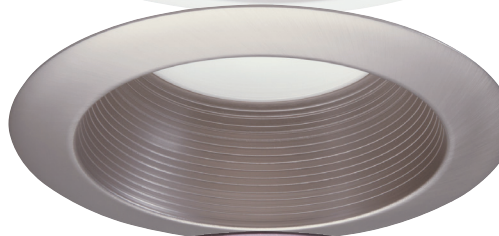


## Trim Ring Finishes

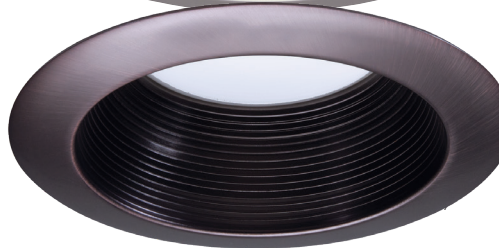
white



satin nickel



tuscan bronze



## 5" Trims

**591**

5" "dead front" shallow baffle



**591WB**

white "dead front" shallow baffle  
(for 600 Series module only)

**592**

5" reflector



**592W**

white



**592SC**

specular clear



**592H**

haze

**596**

5" shallow baffle

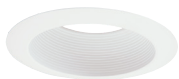


**596WB**

white shallow baffle and trim

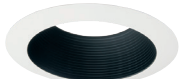
**593**

5" baffle



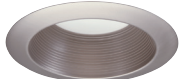
**593WB**

white baffle and trim



**593BB**

black baffle, white trim



**593SN**

satin nickel baffle and trim



**593TBZ**

tuscan bronze baffle and trim

**594**

5" eyeball



**594WB**

white



**594SN**

satin nickel



**594TBZ**

tuscan bronze

### Accessory

5" oversize trim ring



**TRM590WH**  
white

## 6" Trims

**691**

6" "dead front" shallow baffle



**691WB**

white "dead front" shallow baffle  
(for 600 Series module only)

**692**

6" reflector



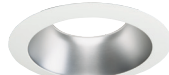
**692W**

white



**692SC**

specular clear



**692H**

haze

**696**

6" shallow baffle

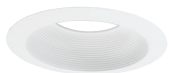


**696WB**

white shallow baffle and trim

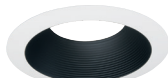
**693**

6" baffle



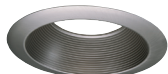
**693WB**

white baffle and trim



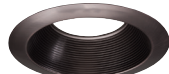
**693BB**

black baffle, white trim



**693SN**

satin nickel baffle and trim



**693TBZ**

tuscan bronze baffle and trim

**694**

6" eyeball



**694WB**

white



**694TBZ**

tuscan bronze

### Accessory

6" oversize trim ring



**TRM690WH**  
white

# Housings

## ML56 Housing Compatibility

### Halo LED

6-inch: H750ICAT, H750RICAT, H750T, H750TCP, H2750ICAT, H2750RICAT, E750ICAT, E750RICAT, H750FR2ICAT

5-inch: H550ICAT, H550RICAT, E550ICAT, E550RICAT, H550FR2ICAT

### Halo LED retrofit

6-inch: ML7E26RFK, ML7BXFK

### Halo Standard Housings

6-inch: H7ICAT, H7RICAT, H7ICT, H7RICT, H7ICATNB, H7ICTNB, H7T, H7RT, H7TNB, H7TCP, H7UICAT, E7ICAT, E7RICAT, E7ICATNB, E7TAT, E7RTAT, E7TATNB

5-inch: H5ICAT, H5RICAT, H5ICATNB, H5T, H5TNB, H5RT, E5ICAT, E5RICAT, E5ICATNB, E5TAT, E5TATNB, E5RTAT

### Halo Shallow Housings

6-inch: H27ICAT, H27RICAT, H27T, H27RT, E27ICAT, E27RICAT, E27TAT, E27RTAT

5-inch: H25ICAT, H25RICAT, H25ICATNB

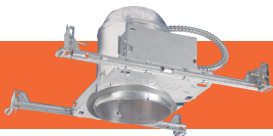
### Halo 0-10V Housings

6-inch: H750ICATD010, H750RICATD010

5-inch: H550ICATD010, H550RICATD010



Halo  
5" LED  
 housings



H550ICAT



H550RICAT

Halo  
6" LED  
 housings



H750ICAT



H750RICAT



H2750ICAT



H2750RICAT

## Housings

### **Halo LED 6-inch**

H750ICAT= 6" LED, Insulated Ceiling, Air-Tite, New Construction Housing  
H750RICAT= 6" LED, Insulated Ceiling, Air-Tite, Remodel Housing  
H750T= 6" LED, Non-IC, Air-Tite, New Construction Housing  
H750TCP= 6" LED, Non-IC, New Construction/Remodel Chicago Plenum Housing  
H750ICATD010= 6" LED, IC rated, air-tite, new construction housing, 0-10V compatibility  
H750RICATD010= 6" LED, IC rated, air-tite, remodel housing, 0-10V compatibility  
H2750ICAT= 6" LED, Shallow, Insulated Ceiling, Air-Tite, New Construction (use with 691X, 694X, 696X trims only)  
H2750RICAT= 6" LED, Shallow, Insulated Ceiling, Air-Tite, Remodel (use with 691X, 694X, 696X trims only)  
E750ICAT= 6" LED, Insulated Ceiling, Air-Tite, New Construction Housing  
E750RICAT= 6" LED, Insulated Ceiling, Air-Tite, Remodel Housing

### **Halo LED 5-inch**

H550ICAT= 5" LED, Insulated Ceiling, Air-Tite, New Construction Housing  
H550RICAT= 5" LED, Insulated Ceiling, Air-Tite, Remodel Housing  
H550ICATD010= 5" LED, IC rated, air-tite, new construction housing, 0-10V compatibility  
H550RICATD010= 5" LED, IC rated, air-tite, remodel housing, 0-10V compatibility  
E550ICAT= 5" LED, Insulated Ceiling, Air-Tite, New Construction Housing  
E550RICAT= 5" LED, Insulated Ceiling, Air-Tite, Remodel Housing

### **Halo LED retrofit**

ML7E26RFK= 6" Retrofit Enclosure, Non-IC, E26 Screw base Interface  
ML7BXFK= 6" Retrofit Enclosure, Non-IC, BX Whip

### **Halo Standard Housings 6-inch**

H7ICAT= 6" Insulated Ceiling, Air-Tite New Construction Housing  
H7RICAT= 6" Insulated Ceiling, Air-Tite Remodel Housing  
H7ICT= 6" Insulated Ceiling, New Construction Housing  
H7RICT= 6" Insulated Ceiling, Remodel Housing  
H7ICATNB= 6" Insulated Ceiling, Air-Tite New Construction Housing, No Socket Bracket  
H7ICTNB= 6" Insulated Ceiling, New Construction Housing, No Socket Bracket  
H7T= 6" Non-IC, New Construction Housing  
H7RT= 6" Non-IC, Remodel Housing  
H7TNB= 6" Non-IC, New Construction Housing, No Socket Bracket  
H7TCP= 6" Non-IC, Chicago Plenum, New Construction/Remodel Housing  
H7UICAT= 6" Insulated Ceiling, Universal, Air-Tite, New Construction Housing  
E7ICAT= 6" Insulated Ceiling, Air-Tite New Construction Housing  
E7RICAT= 6" Insulated Ceiling, Air-Tite Remodel Housing  
E7ICATNB= 6" Insulated Ceiling, Air-Tite New Construction Housing, No Socket Bracket  
E7TAT= 6" Non-IC, New Construction Housing  
E7RTAT= 6" Non-IC, Remodel Housing  
E7TATNB= 6" Non-IC, New Construction Housing, No Socket Bracket

### **Halo Standard Housings 5-inch**

H5ICAT= 5" Insulated Ceiling, Air-Tite New Construction Housing  
H5RICAT= 5" Insulated Ceiling, Air-Tite Remodel Housing  
H5ICATNB= 5" Insulated Ceiling, Air-Tite New Construction Housing, No Socket Bracket  
H5T= 5" Non-IC, New Construction Housing  
H5RT= 5" Non-IC, Remodel Housing

### **Halo Standard Housings 5-inch (continued)**

H5TNB= 5" Non-IC, New Construction Housing, No Socket Bracket  
E5ICAT= 5" Insulated Ceiling, Air-Tite New Construction Housing  
E5RICAT= 5" Insulated Ceiling, Air-Tite Remodel Housing  
E5ICATNB= 5" Insulated Ceiling, Air-Tite New Construction Housing, No Socket Bracket  
E5TAT= 5" Non-IC, New Construction Housing  
E5RTAT= 5" Non-IC, Remodel Housing  
E5TATNB= 5" Non-IC, New Construction Housing, No Socket Bracket

### **Halo Shallow Housings 6-inch\***

H27ICAT= 6" Shallow, Insulated Ceiling, Air-Tite New Construction  
H27RICAT= 6" Shallow, Insulated Ceiling, Air-Tite Remodel Housing  
H27T= 6" Shallow, Non-IC, New Construction Housing  
H27RT= 6" Shallow, Non-IC, Remodel Housing  
E27ICAT= 6" Shallow, Insulated Ceiling, Air-Tite New Construction  
E27RICAT= 6" Shallow, Insulated Ceiling, Air-Tite Remodel Housing  
E27TAT= 6" Shallow, Non-IC, New Construction Housing  
E27RTAT= 6" Shallow, Non-IC, Remodel Housing

### **Halo Shallow Housings 5-inch\*\***

H25ICAT= 5" Shallow, Insulated Ceiling, Air-Tite New Construction  
H25RICAT= 5" Shallow, Insulated Ceiling, Air-Tite Remodel  
H25ICATNB= 5" Shallow, Insulated Ceiling, Air-Tite New Construction, No Socket Bracket

\*use with 691X, 694X, 696X trims only

\*\*use with 591X, 594X, 596X trims only

**Lighting Brands**

Ametrix  
AtLite  
Corelite  
Ephesus  
Fail-Safe  
HALO  
HALO Commercial  
Invue  
iO  
Iris  
Lumark  
Lumière  
McGraw-Edison  
Metalux  
MWS  
Neo-Ray  
Portfolio  
PrentaLux - 3D Printed  
Lighting  
RSA  
Shaper  
Streetworks  
Sure-Lites  
Telensa

**Controls Brands**

Greengate  
Fifth Light  
Intelligent Lighting Controls

**Connected Lighting Systems  
and Smart Spaces Platform**

WaveLinx

**Cooper Lighting Solutions**

1121 Highway 74 South  
Peachtree City, GA 30269  
P: 770-486-4800  
www.cooperlighting.com

**Canada Sales**

5925 McLaughlin Road  
Mississauga, Ontario L5R 1B8  
P: 905-501-3000  
F: 905-501-3172

© 2023 Cooper Lighting Solutions  
All Rights Reserved  
Printed in USA  
Publication No. BR518101EN  
April 2023

Cooper Lighting Solutions is a  
registered trademark.

All other trademarks are property  
of their respective owners.

Product availability, specifications,  
and compliances are subject to  
change without notice.