



FUTUREGLASS



Contents

FastFit	04
Hinges	06
Clips	15
Pull Handles & Knobs	22
Slider Kits	28
Seals	38
Channels	39
Glass Panels	40

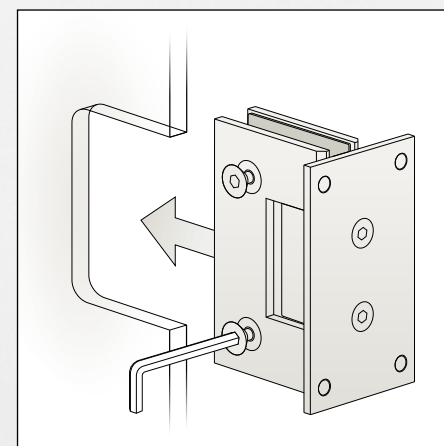
Timeless Style in Seconds

Discover how easy installing our quality shower enclosure hardware can be with FastFit Non-Slip Technology by Future Glass.

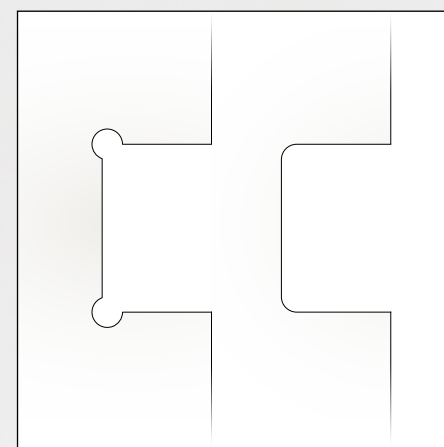
FASTFIT
NON-SLIP TECHNOLOGY



Prevent panel slippage, save time and increase efficiency with pre-installed rubber gaskets



Hinge backing plate stays in place during installation- simply slide on to glass panel and tighten screws

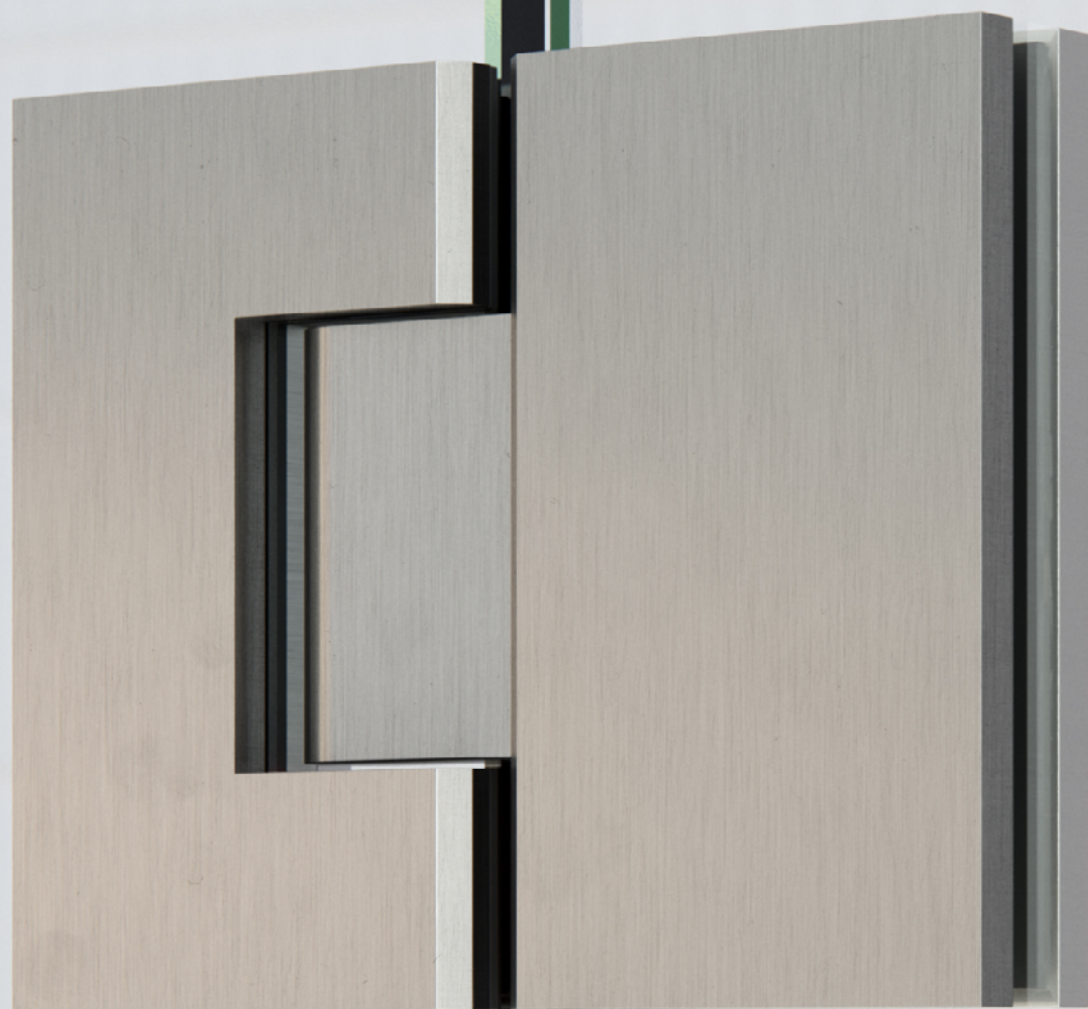


Versatile design works with both mouse ear and square cut-outs



Fast Fit Non-Slip Technology comes standard on all Future Glass Hinges as well as a 5 year limited warranty.

FUTUREGLASS



Hinges

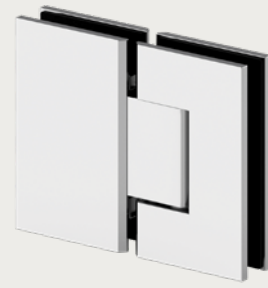
Gamma & Pegasus	08
Volans & Ceres	10
Hydra & Titan	12
Helix & Medusa	13

GAMMA

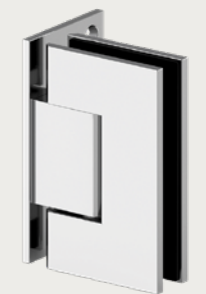
The Future Glass Gamma Hinge is made from high-quality solid brass. Unlike other brands, Future Glass hinges feature a fixed rubber gasket designed to reduce door slippage. The unique square cut-out design alleviates the need for traditional mouse ear glass panel cut-outs. Eliminating the need to remove the backing plate completely when fixing the hinge to the door panel allows for significantly faster and easier installation.



GAM-FB90
Wall Mount
Full Back Plate Hinge



GAM-180
180° Glass-to-Glass Hinge



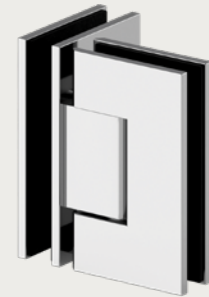
GAM-OB90
Wall Mount
Offset Back Plate Hinge



GAM-135
135° Glass-to-Glass Hinge



GAM-SB90
Wall Mount
Short Back Plate Hinge



GAM-90GM
90° Glass-to-Glass Hinge

PEGASUS

The Future Glass Pegasus Hinge is made from high-quality solid brass. Functionally equivalent to our Gamma hinge, the Pegasus features radius corners, and beveled edges. Unlike other brands, Future Glass hinges feature a fixed rubber gasket designed to reduce door slippage. The unique square cut-out design alleviates the need for traditional mouse ear glass panel cut-outs. Eliminating the need to remove the backing plate completely when fixing the hinge to the door panel allows for significantly faster and easier installation.



PEG-HB90
Wall Mount
'H' Back Plate Hinge



PEG-180
180° Glass-to-Glass Hinge



PEG-OB90
Wall Mount
Offset Back Plate Hinge



PEG-135
135° Glass-to-Glass Hinge



PEG-SB90
Wall Mount
Short Back Plate Hinge

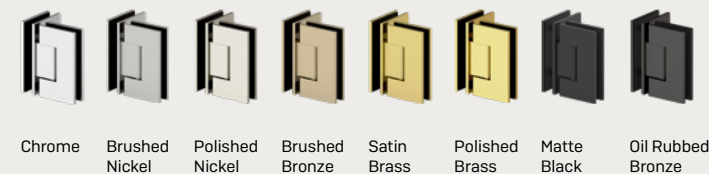


PEG-90GM
90° Glass-to-Glass Hinge

GAMMA & PEGASUS FEATURES

- › Solid brass construction
- › Total allowable door weight (2 hinges) Up to 110 lbs. (50 kg) and maximum door width of 32"
- › Use with 3/8" (10mm) or 1/2" (12mm) thickness tempered safety glass
- › Fast Fit technology easy slide-on hinge
- › Fixed gaskets to prevent door slippage
- › Choose from eight superior hardware finishes
- › Self-center closing when within 15° of closed position
- › 90° swing inwards and outwards

AVAILABLE FINISHES



MAXIMUM DOOR CAPACITY	DOOR WEIGHT	DOOR WIDTH
USING 2 HINGES	110 lbs. (50 kg.)	32" [813 mm]
USING 3 HINGES	140 lbs. (64 kg.)	32" [813 mm]



GLASS PANEL COMPATIBILITY

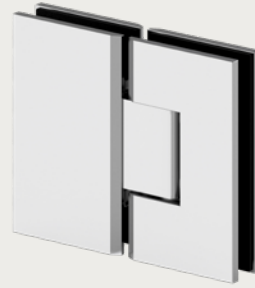
- › Our Gamma & Pegasus hinges are compatible with all FG Glass Panels sold on futureglass.us. When used together, our hinges and panels allow the fastest installation possible with the highest quality shower products available in market
- › GAM-90GM, GAM-135, PEG-90GM and PEG-135 are not compatible with our current range of glass panels. Please refer to website for additional technical and glass cutout details

VOLANS

The Future Glass Volans collection of hinges are made from high-quality solid brass. One of our mid-size ranges, Volans hinges supports door weights up to 130 lbs. Unlike other brands, Future Glass hinges feature a fixed rubber gasket designed to reduce door slippage. The unique square cut-out design alleviates the need for traditional mouse ear glass panel cut-outs. Eliminating the need to remove the backing plate completely when fixing the hinge to the door panel allows for significantly faster and easier installation.



VOL-FB90
Wall Mount
Full Back Plate Hinge



VOL-180
180° Glass-to-Glass Hinge



VOL-OB90
Wall Mount
Offset Back Plate Hinge



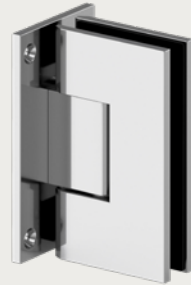
VOL-135
135° Glass-to-Glass Hinge

NEW ADJUSTABLE HINGES

We've taken the best and improved on it. Try our Adjustable Hinges for your next installation.



VOL-OB90ADJ
Adjustable Wall Mount
Offset Back Plate Hinge



VOL-FB90ADJ
Adjustable Wall Mount
Full Back Plate Hinge



VOL-SB90
Wall Mount
Short Back Plate Hinge



VOL-90GM
90° Glass-to-Glass Hinge

CERES & VOLANS FEATURES

- › Solid brass construction
- › Total allowable door weight (2 hinges) Up to 130 lbs. (59 kg) and maximum door width of 36"
- › Use with 3/8" (10mm) or 1/2" (12mm) thickness tempered safety glass
- › Fast Fit technology easy slide-on hinge
- › Fixed gaskets to prevent door slippage
- › Choose from eight superior hardware finishes
- › Self-center closing when within 15° of closed position
- › 90° swing inwards and outwards

AVAILABLE FINISHES



Chrome Brushed Nickel Polished Nickel Brushed Bronze Satin Brass Polished Brass Matte Black Oil Rubbed Bronze

CERES

The Future Glass Ceres collection of hinges are made from high-quality solid brass. Functionally equivalent to our Volans family, the Ceres mid-size hinges feature radius corners, beveled edges, and support door weights up to 130 lbs. Unlike other brands, Future Glass hinges feature a fixed rubber gasket designed to reduce door slippage. The unique square cut-out design alleviates the need for traditional mouse ear glass panel cut-outs. Eliminating the need to remove the backing plate completely when fixing the hinge to the door panel allows for significantly faster and easier installation.



CRS-HB90
Wall Mount
'H' Back Plate Hinge



CRS-180
180° Glass-to-Glass Hinge



CRS-OB90
Offset Back Plate Hinge



CRS-135
135° Glass-to-Glass Hinge

NEW ADJUSTABLE HINGES

We've taken the best and improved on it. Try our Adjustable Hinges for your next installation.



CRS-HB90ADJ
Adjustable Wall Mount
'H' Back Plate Hinge



CRS-OB90ADJ
Adjustable
Offset Back Plate Hinge



CRS-90GM
90° Glass-to-Glass Hinge

MAXIMUM DOOR CAPACITY	DOOR WEIGHT	DOOR WIDTH
USING 2 HINGES	130 lbs. (59 kg.)	36" (914 mm)
USING 3 HINGES	160 lbs. (72 kg.)	36" (914 mm)

GLASS PANEL COMPATIBILITY

- › Our Ceres & Volans hinges are not compatible with our current range of glass panels. Please refer to website for additional technical and glass cutout details



TITAN

The Future Glass Titan series of hinges are made from high-quality solid brass. The Titan, our largest hinges, support door weights up to 150 lbs. Unlike other brands, Future Glass hinges feature a fixed rubber gasket designed to reduce door slippage. The unique square cut-out design alleviates the need for traditional mouse ear glass panel cut-outs. Eliminating the need to remove the backing plate completely when fixing the hinge to the door panel allows for significantly faster and easier installation.

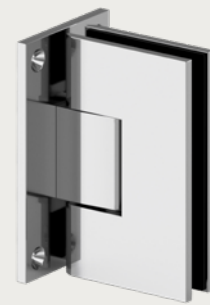
HYDRA

The Future Glass Hydra collection of hinges are made from high-quality solid brass. Functionally equivalent to our Titan hinges, the large size Hydra family feature radius corners, beveled edges and support door weights up to 150 lbs. Unlike other brands, Future Glass hinges feature a fixed rubber gasket designed to reduce door slippage. The unique square cut-out design alleviates the need for traditional mouse ear glass panel cut-outs. Eliminating the need to remove the backing plate completely when fixing the hinge to the door panel allows for significantly faster and easier installation.

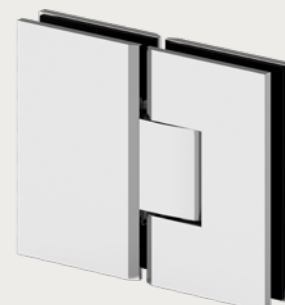
HYDRA & TITAN FEATURES

- › Solid brass construction
- › Total allowable door weight (2 hinges) Up to 150 lbs. (68 kg) and maximum door width of 39"
- › Use with 3/8" (10mm) or 1/2" (12mm) thickness tempered safety glass
- › Fast Fit technology easy slide-on hinge
- › Fixed gaskets to prevent door slippage
- › Choose from eight superior hardware finishes
- › Self-center closing when within 15° of closed position
- › 90° swing inwards and outwards

MAXIMUM DOOR CAPACITY	DOOR WEIGHT	DOOR WIDTH
USING 2 HINGES	150 lbs. (68 kg.)	39" (991 mm)



TTN-FB90
Wall Mount
Full Back Plate Hinge



TTN-180
180° Glass-to-Glass Hinge



HYD-HB90
Wall Mount
'H' Back Plate Hinge



HYD-180
180° Glass-to-Glass Hinge

AVAILABLE FINISHES



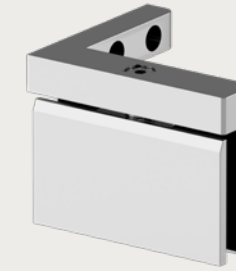
Chrome Brushed Nickel Polished Nickel Brushed Bronze Satin Brass Polished Brass Matte Black Oil Rubbed Bronze

GLASS PANEL COMPATIBILITY

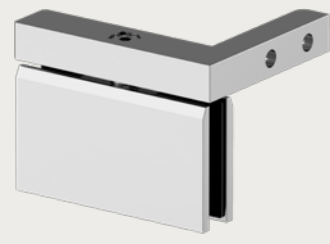
- › Our Hydra & Titan hinges are not compatible with our current range of glass panels. Please refer to website for additional technical and glass cutout details

HELIX

The Future Glass Helix series of pivot hinges are designed for use with 5/16" (8 mm) to 3/8" (10 mm) tempered safety glass. While pivot hinges provide multiple application possibilities, one of the biggest advantages is that they carry most of the weight on the bottom. Pivot hinges can also be inset from the wall, enabling clearance for towel bars and other projections. Helix hinges are self-centering, with four springs for maximum retention strength. Available in left or right configurations.



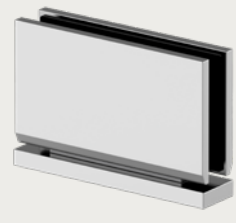
HEL-SPHWM-L
Lefthand Mount Pivot Hinge



HEL-SPHWM-R
Righthand Mount Pivot Hinge



HEL-SPH180
180° Glass-to-Glass Pivot Hinge



HEL-SPHTB
Top/Bottom Mount
Pivot Hinge

AVAILABLE FINISHES



Chrome Brushed Nickel Polished Nickel Brushed Bronze Satin Brass Polished Brass Matte Black Oil Rubbed Bronze

GLASS PANEL COMPATIBILITY

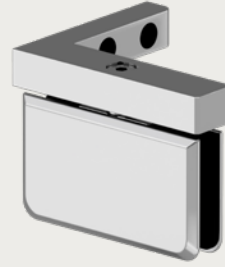
- › Our Helix hinges are not compatible with our current range of glass panels. Please refer to website for additional technical and glass cutout details

WEIGHT CAPACITY	DOOR WEIGHT	DOOR WIDTH
HELIX	100 lbs. (45 kg.)	32" (813 mm)

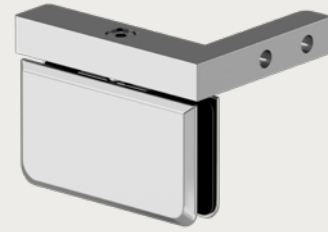


MEDUSA

The Future Glass Medusa series of pivot hinges are designed for use with 5/16" (8 mm) to 3/8" (10 mm) tempered safety glass. While pivot hinges provide multiple application possibilities, one of the biggest advantages is that they carry most of the weight on the bottom. Pivot hinges can also be inset from the wall, enabling clearance for towel bars and other projections. Medusa hinges are self-centering, with four springs for maximum retention strength. Available in left or right configurations.



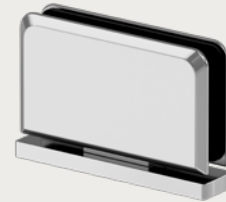
MED-BPHWM-L
Lefthand Mount Pivot Hinge



MED-BPHWM-R
Righthand Mount Pivot Hinge

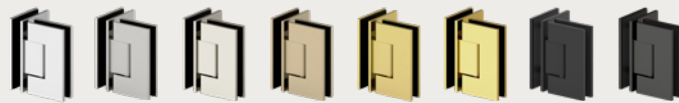


MED-BPH180
180° Glass-to-Glass Pivot Hinge



MED-BPHTB
Top/Bottom Mount
Pivot Hinge

AVAILABLE FINISHES



Chrome Brushed Nickel Polished Nickel Brushed Bronze Satin Brass Polished Brass Matte Black Oil Rubbed Bronze

GLASS PANEL COMPATIBILITY

› Our Medusa hinges are not compatible with our current range of glass panels. Please refer to website for additional technical and glass cutout details

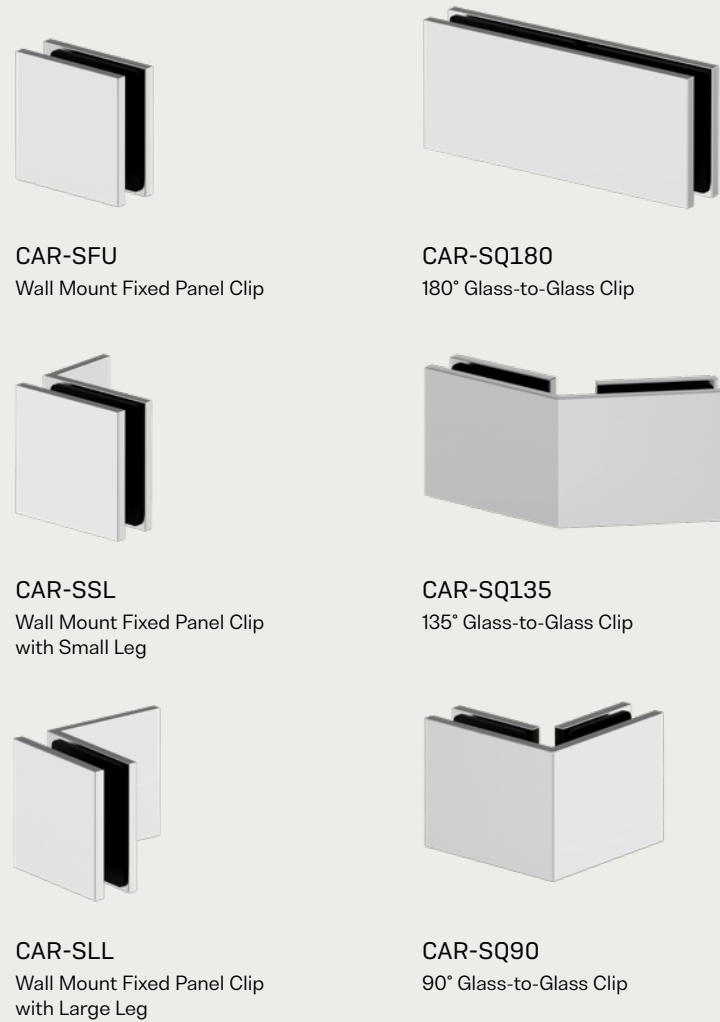
WEIGHT CAPACITY	DOOR WEIGHT	DOOR WIDTH
MEDUSA	100 lbs. (45 kg.)	32" (813 mm)



CLIPS

CARINA

The Future Glass Carina line of high quality, solid brass, square-style clips, are designed to firmly secure glass panels in place. With glass-to-glass and surface mount options, in multiple sizes and angles, the Carina line has you covered for any frameless glass shower enclosure project. Designed to match seamlessly with any of our square hinges for a complete look. Utilizing fixed gaskets, the Carina clips offer faster and easier installation than traditional clips.



CAR-SWMB
Wall Mount 90° Bracket
Glass-to-Wall

CAR-SLL
Wall Mount Fixed Panel Clip
with Large Leg

CAR-SQ90
90° Glass-to-Glass Clip

CARINA FEATURES

- › Solid brass construction
- › Choose from eight superior hardware finishes
- › Glass fabrication needed to accommodate clips
- › Requires a 3/4" (19 mm) hole in glass panel
- › Use with 3/8" (10 mm) or 1/2" (12 mm) tempered safety glass
- › Includes screws and wall tile plugs
- › For SLL/SSL: large, 90-degree leg covers a greater surface area for extra strength

AVAILABLE FINISHES



GLASS PANEL COMPATIBILITY

- › Our Carina line of clips is not compatible with our current range of FG Glass Panels



CARINA TRANSOM

The Future Glass Carina Transom line of high quality, solid brass, square-style clips, are designed to rotate a movable transom off a wall or an inline fixed glass panel, depending on the model. With glass-to-glass and wall mount options, the Carina Transom line has you covered for any frameless glass shower enclosure project. The Carina Transom line is designed to match seamlessly with any of our square hinges for a complete look. Utilizing fixed gaskets, the Carina Transom clips offer faster and easier installation than traditional clips.



CAR-TS180
180° Glass-to-Glass
Movable Transom Clip

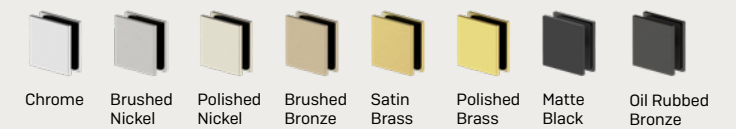
CAR-TSDS180
180° Glass-to-Glass
Double Stud Transom Clip

CAR-TSWM
Wall Mount
Movable Transom Clip

CARINA TRANSOM FEATURES

- › Solid brass construction
- › Choose from eight superior hardware finishes
- › Glass fabrication needed to accommodate clips
- › Requires a 3/4" (19 mm) hole in glass panel
- › Use with 3/8" (10 mm) or 1/2" (12 mm) tempered safety glass
- › Includes screws and wall tile plugs
- › Glass transom swivels to allow steam release
- › CAR-TSDS180 designed with reduced size for clean look

AVAILABLE FINISHES



GLASS PANEL COMPATIBILITY

- › Our Carina Transom line of clips is not compatible with our current range of FG Glass Panels



CAPELLA

The Future Glass Capella line of high quality, solid brass, beveled clips, are designed to firmly secure glass panels in place. With glass-to-glass and surface mount options, in multiple sizes and angles, the Capella line has you covered for any frameless glass shower enclosure project. Designed to match seamlessly with any of our beveled hinges for a complete look. Utilizing fixed gaskets, the Capella clips offer faster and easier installation than traditional clips.



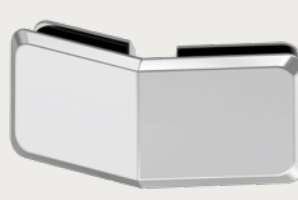
CAP-BFU
Wall Mount Fixed Panel Clip



CAP-B180
180° Glass-to-Glass Clip



CAP-BSL
Wall Mount Fixed Panel Clip with Small Leg



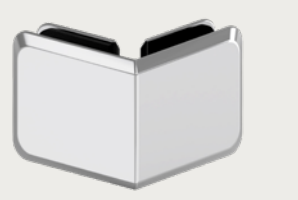
CAP-B135
135° Glass-to-Glass Clip



CAP-BWMB
Wall Mount 90° Bracket Glass-to-Wall



CAP-BLL
Wall Mount Fixed Panel Clip with Large Leg



CAP-B90
90° Glass-to-Glass Clip

CAPELLA FEATURES

- › Solid brass construction
- › Choose from eight superior hardware finishes
- › Glass fabrication needed to accommodate clips
- › Requires a 3/4" (19 mm) hole in glass panel
- › Use with 3/8" (10 mm) or 1/2" (12 mm) tempered safety glass
- › Includes screws and wall tile plugs.
- › For BLL/BSL: large, 90-degree leg covers a greater surface area for extra strength

AVAILABLE FINISHES



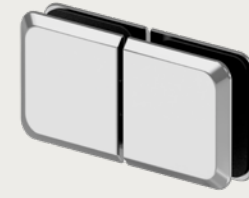
GLASS PANEL COMPATIBILITY

- › Our Capella line of clips is not compatible with our current range of FG Glass Panels



CAPELLA TRANSOM

The Future Glass Capella Transom line of high quality, solid brass, beveled clips, are designed to rotate a movable transom off a wall or an inline fixed glass panel, depending on the model. With glass-to-glass and wall mount options, the Capella Transom line has you covered for any frameless glass shower enclosure project. The Capella Transom line is designed to match seamlessly with any of our beveled hinges for a complete look. Utilizing fixed gaskets, the Capella Transom clips offer faster and easier installation than traditional clips.



CAP-TB180
180° Glass-to-Glass Movable Transom Clip



CAP-TBWM
Wall Mount Movable Transom Clip

CAPELLA FEATURES

- › Solid brass construction
- › Choose from eight superior hardware finishes
- › Glass fabrication needed to accommodate clips
- › Requires a 3/4" (19 mm) hole in glass panel
- › Use with 3/8" (10 mm) or 1/2" (12 mm) tempered safety glass
- › Includes screws and wall tile plugs.
- › Glass transom swivels to allow steam release

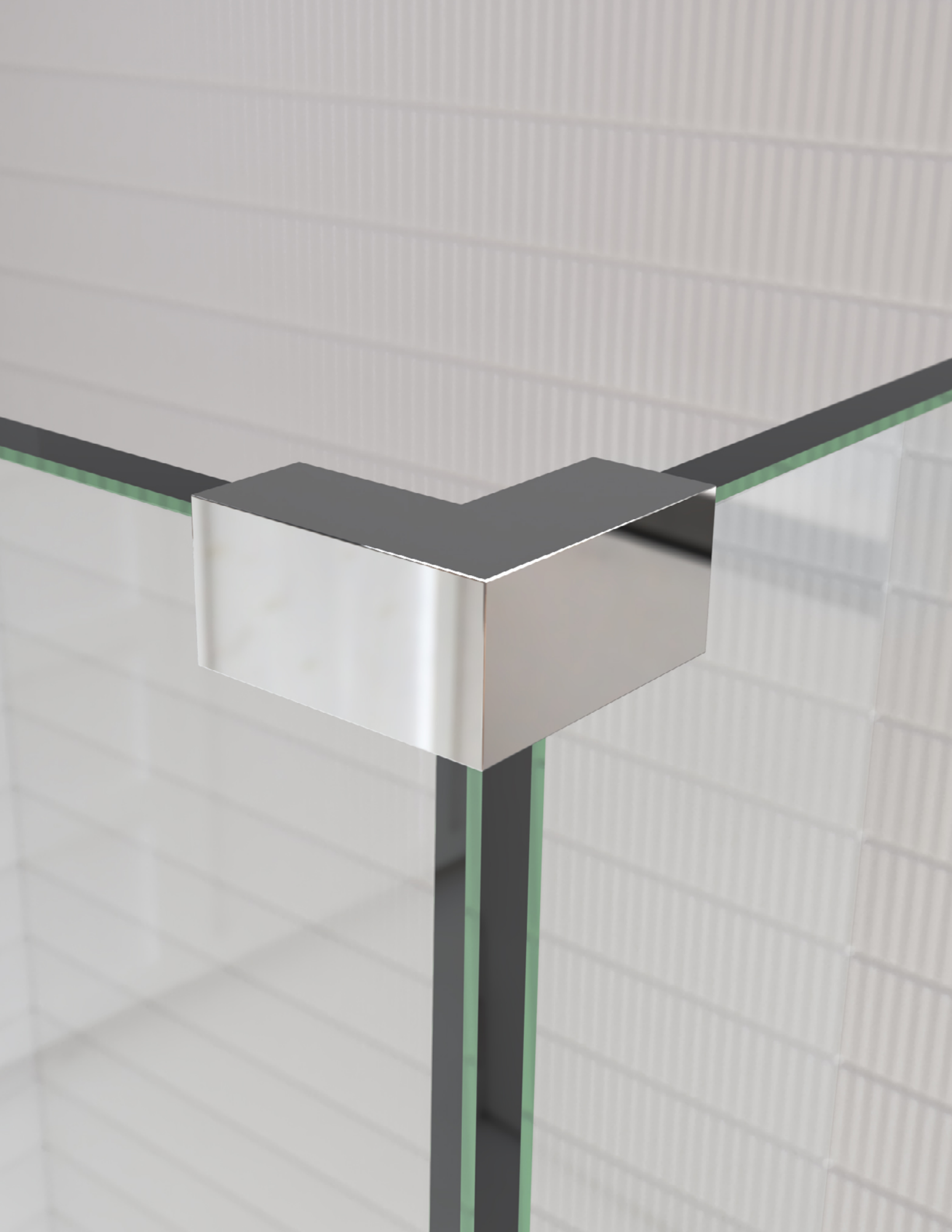
AVAILABLE FINISHES



GLASS PANEL COMPATIBILITY

- › Our Capella Transom line of clips is not compatible with our current range of FG Glass Panels

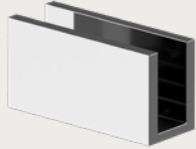




COVUS

The Future Glass Covus line of high quality “sleeve over” mounting clips that eliminate the need for glass fabrication. Made from solid brass in a variety of finishes and sizes, the Covus line is the perfect finishing touch to any frameless glass shower enclosure.

Standard Size Clips



COV-GWCLIP
Wall Mount No Cutout
Fixed Panel Clip



COV-SOAJ
Adjustable Glass-to-Glass
Sleeve Over Clip



COV-SO135
135° Glass-to-Glass
Sleeve Over Clip



COV-SO90
90° Glass-to-Glass
Sleeve Over Clip



COV-SOWM-L
Sleeve Over Wall Mount Clip
Lefthand



COV-SOWM-R
Sleeve Over Wall Mount Clip
Righthand

COVUS FEATURES

- › Solid brass construction
- › Choose from eight superior hardware finishes
- › No glass fabrication required
- › Use with 3/8" (10 mm) tempered safety glass
- › COV-SOAJ, COV-SO135 and COV-SO90 can also be used with 1/2" (12mm) tempered safety glass
- › Includes screws and wall tile plugs

AVAILABLE FINISHES



GLASS PANEL COMPATIBILITY

- › Our COV-GWCLIP, COV-SO90 and COV-SOWM models are compatible with our current range of FG Glass Panels with 3/8" thickness.



HANDLES

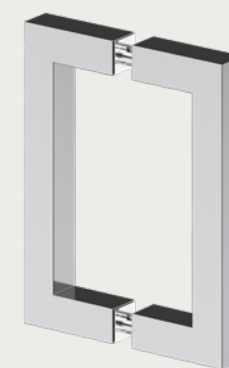


HAEDUS

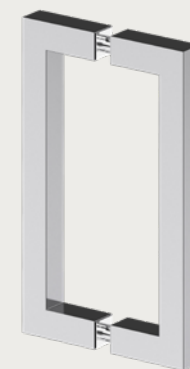
The Future Glass Haedus line of handles feature square tubing designed to beautifully match our square hinges and clips. Easy to install and designed to stand the test of time. Available in multiple finishes and size configurations to fit your needs.



HAE-6X22
6" Square Tubing Pull Handle and
22" Towel Bar Combination



HAE-STHDS6
6" Square Tubing Back-to-Back
Pull Handle



HAE-STHDS8
8" Square Tubing Back-to-Back
Pull Handle

HAEDUS FEATURES

- › Constructed from 3/4" (19 mm) stainless steel square tubing
- › Choose from eight superior hardware finishes
- › Requires 1/2" (12 mm) hole in glass panel
- › Use with 3/8" (10 mm) or 1/2" (12 mm) tempered safety glass
- › Includes nylon spacers, washers, and end caps

AVAILABLE FINISHES



GLASS PANEL COMPATIBILITY

- › Our HAE-STHDS6 models are compatible with our current range of FG Glass Panels with 3/8" thickness. Please refer to website for additional technical and glass cutout details
- › Our HAE-6X22 is compatible with our GW-DTB Glass Door Panels. Please refer to website for additional technical and glass cutout details

HALLEY

The Future Glass Halley collection comes in multiple configurations to fit your use case. From simple back-to-back handles to single sided towel bars, and combination towel bar/handle bars. Available in multiple finishes and designed to last a lifetime.



HAL-6X18
6" Pull Handle and 18" Towel Bar Combination



HAL-RTHDS6
6" Tubular Back-to-Back Pull Handle



HAL-TBSS18
18" Tubular Single-Sided Towel Bar



HAL-6X24
6" Pull Handle and 24" Towel Bar Combination



HAL-RTHDS8
8" Tubular Back-to-Back Pull Handle



HAL-TBSS24
24" Tubular Single-Sided Towel Bar



HAL-8X18
8" Pull Handle and 18" Towel Bar Combination



HAL-8X24
8" Pull Handle and 24" Towel Bar Combination

HALLEY FEATURES

- › Constructed from 3/4" (19 mm) stainless steel tubing
- › Choose from eight superior hardware finishes
- › Requires 1/2" (12 mm) hole in glass panel
- › Use with 3/8" (10 mm) or 1/2" (12 mm) tempered safety glass
- › Includes nylon spacers, washers, and end caps

AVAILABLE FINISHES



GLASS PANEL COMPATIBILITY

- › Our HAL-RTHDS6 models are compatible with our current range of FG Glass Panels with 3/8" thickness. Please refer to website for additional technical and glass cutout details

HAUMEA

The Future Glass Haumea collection of round tubing mitered corner handles are high quality back-to-back pull handles. A perfect styling match with any Future Glass square hinges. Easy to install and available in a wide range of finishes.



ME A-MTHDS6
6" Round Tubing Mitered Corner Back-to-Back Pull Handle



ME A-MTHDS8
8" Round Tubing Mitered Corner Back-to-Back Pull Handle

HAUMEA FEATURES

- › Constructed from 3/4" (19 mm) stainless steel tubing
- › Choose from eight superior hardware finishes
- › Requires 1/2" (12 mm) hole in glass panel
- › Use with 3/8" (10 mm) or 1/2" (12 mm) tempered safety glass
- › Includes nylon spacers and washers

AVAILABLE FINISHES



GLASS PANEL COMPATIBILITY

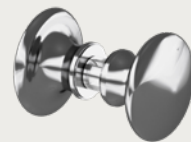
- › Our ME A-MTHDS6 models are compatible with our current range of FG Glass Panels with 3/8" thickness. Please refer to website for additional technical and glass cutout details

HERITAGE

The Future Glass Heritage line of round profile back-to-back shower doorknobs are available in both a classic and modern design to complete the look of your shower enclosure. Made from solid brass in multiple quality finishes, they are sure to stand the test of time.



HTG-GWKNOB
Modern Style Back-to-Back Shower Doorknobs



HTG-RKDS
Traditional Style Back-to-Back Shower Doorknobs

HERITAGE FEATURES

- › Constructed from 3/4" (19 mm) stainless steel tubing
- › Choose from eight superior hardware finishes
- › Requires 1/2" (12 mm) hole in glass panel
- › Use with 3/8" (10 mm) or 1/2" (12 mm) tempered safety glass
- › Includes screws and washers

AVAILABLE FINISHES

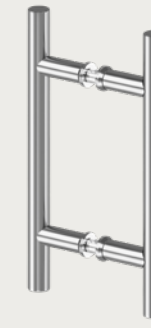


GLASS PANEL COMPATIBILITY

- › Our Heritage models are compatible with our current range of FG Glass Panels with 3/8" thickness. Please refer to website for additional technical and glass cutout details

HYPERION

The Future Glass Hyperion line of high-quality, ladder style back-to-back pull handles are easy to install and available in a wide range of finishes. Made from heavy brass tubing and designed to stand the test of time.



HYP-LSHDS6
6" Ladder Style Back-to-Back Pull Handle

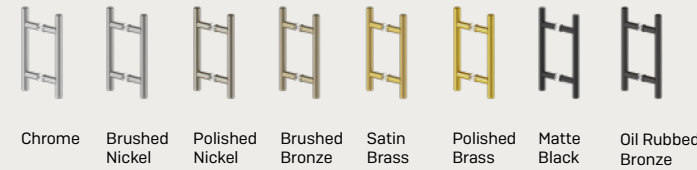


HYP-LSHDS8
8" Ladder Style Back-to-Back Pull Handle

HYPERION FEATURES

- › Solid Brass construction
- › Choose from eight superior hardware finishes
- › Requires 1/2" (12 mm) hole in glass panel
- › Use with 3/8" (10 mm) or 1/2" (12 mm) tempered safety glass
- › Includes nylon spacers and washers

AVAILABLE FINISHES

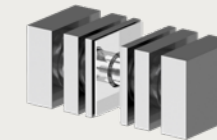


GLASS PANEL COMPATIBILITY

- › Our HYP-LSHDS6 models are compatible with our current range of FG Glass Panels with 3/8" thickness. Please refer to website for additional technical and glass cutout details

KESTRAL

The Future Glass Heritage line of square profile back-to-back shower doorknobs are highlighted by their modern design to complete the look of your shower enclosure. Made from solid brass in multiple quality finishes, they are sure to stand the test of time.



KES-SKDS
Square Back-to-Back Style Knobs

KESTRAL FEATURES

- › Solid Brass construction
- › Choose from eight superior hardware finishes
- › Requires 1/2" (12 mm) hole in glass panel
- › Use with 3/8" (10 mm) or 1/2" (12 mm) tempered safety glass
- › Includes screws and washers

AVAILABLE FINISHES



GLASS PANEL COMPATIBILITY

- › Our Kestral models are compatible with our current range of FG Glass Panels with 3/8" thickness. Please refer to website for additional technical and glass cutout details

ECLIPSE SLIDER SHOWER HARDWARE KITS



Eclipse Slider Shower Hardware Kits

The Eclipse slider is a luxurious, modern, sliding shower door system with a circular shaped header bar and round rollers. This sliding door hardware system is designed to show more glass and less hardware while delivering quiet, smooth, easy door travel. The Eclipse system accommodates $\frac{3}{8}$ " (10mm) thick tempered safety glass and allows for fixed and sliding panels to be reversible (panels available for purchase separately). Available in your choice of 5 superior slider hardware finishes.

ECLIPSE SLIDER KIT SKUS BY SIZE

- | | |
|-----------------|-----------------|
| › ECL-SLDK48-BB | › ECL-SLDK64-BB |
| › ECL-SLDK48-BN | › ECL-SLDK64-BN |
| › ECL-SLDK48-CH | › ECL-SLDK64-CH |
| › ECL-SLDK48-MB | › ECL-SLDK64-MB |
| › ECL-SLDK48-SB | › ECL-SLDK64-SB |
| › ECL-SLDK52-BB | › ECL-SLDK68-BB |
| › ECL-SLDK52-BN | › ECL-SLDK68-BN |
| › ECL-SLDK52-CH | › ECL-SLDK68-CH |
| › ECL-SLDK52-MB | › ECL-SLDK68-MB |
| › ECL-SLDK52-SB | › ECL-SLDK68-SB |
| › ECL-SLDK56-BB | › ECL-SLDK72-BB |
| › ECL-SLDK56-BN | › ECL-SLDK72-BN |
| › ECL-SLDK56-CH | › ECL-SLDK72-CH |
| › ECL-SLDK56-MB | › ECL-SLDK72-MB |
| › ECL-SLDK56-SB | › ECL-SLDK72-SB |
| › ECL-SLDK60-BB | › ECL-SLDK78-BB |
| › ECL-SLDK60-BN | › ECL-SLDK78-BN |
| › ECL-SLDK60-CH | › ECL-SLDK78-CH |
| › ECL-SLDK60-MB | › ECL-SLDK78-MB |
| › ECL-SLDK60-SB | › ECL-SLDK78-SB |

ECLIPSE SLIDER KIT PART LIST

- | | |
|-------------------------------------|-------------------------------------|
| › Slider Rod (1) | › Slider Rod Fixed Panel Clamps (2) |
| › Rollers (2) and Roller Guides (2) | › Bottom Bracket Door Guide (1) |
| › Door Handle/Knob (1) | › Fixed Panel Wall Clips (2) |
| › Stoppers (2) | › Aluminum Drip Rail (1) |
| › Slider Rod Mounting Brackets (2) | › Plastic Seals (2) |

ECLIPSE SLIDER KIT FEATURES

- › System designed for use with one sliding door and one fixed panel (glass not included)
- › High quality roller bearings assure smooth, quiet door movement
- › Circular shaped rollers and header bar
- › Choose from 5 superior hardware finishes
- › Choose from 8 different sizes to suit your space
- › All hardware required for installation of shower is included
- › Accommodates $\frac{3}{8}$ " (10mm) thick tempered safety glass
- › Sliding door and fixed panel sold separately
- › Roller disc technology for door adjustment up and down for out of plumb walls

GLASS PANEL COMPATIBILITY

- › If purchasing FG Tempered glass for use with the Eclipse Sliding Door Shower Hardware Kits, please use sku chart on pages 26 & 27
- › All ECL-SLDK78 Kits require glass fabrication

AVAILABLE FINISHES



Chrome Brushed Nickel Brushed Bronze Satin Brass Matte Black

90° SLIDER ROD END BRACKET



- › If building a 90° Sliding Shower purchase ECL-90SL-EC Rod End Bracket in the appropriate finish (shown above in chrome):

- | | |
|------------------|------------------|
| › ECL-90SL-EC-BB | › ECL-90SL-EC-MB |
| › ECL-90SL-EC-BN | › ECL-90SL-EC-SB |
| › ECL-90SL-EC-CH | |

Future Glass Tempered Glass Panels

Future Glass stocks glass panels to fit all Eclipse Round Slider Shower Hardware Kits. Please see tables below for panel sizing and component skus. The numeric value in the skus relates to the numeric values in the Eclipse Round Slider Shower Hardware Kit skus. For example: If you are purchasing an ECL-SLDK-48 Hardware Kit, you would need a Door Panel (GW-SL-D-48) and a Fixed Panel (GW-SL-F-48) to complete your project. To view the complete collection, visit our website:

futureglass.us/collections/glass-panels

Eclipse Round Slider Full Height Glass Panels

Shower Sliding Door skus:

PRODUCT SKU	DOOR WIDTH	DOOR HEIGHT
GW-SL-D-48	25 1/2" (648mm)	77 3/4" (1974mm)
GW-SL-D-52	27 1/2" (699mm)	77 3/4" (1974mm)
GW-SL-D-56	29 1/2" (749mm)	77 3/4" (1974mm)
GW-SL-D-60	31 1/2" (800mm)	77 3/4" (1974mm)
GW-SL-D-64	33 1/2" (851mm)	77 3/4" (1974mm)
GW-SL-D-68	35 1/2" (902mm)	77 3/4" (1974mm)
GW-SL-D-72	37 1/2" (953mm)	77 3/4" (1974mm)

Shower Fixed Panel skus:

PRODUCT SKU	PANEL WIDTH	PANEL HEIGHT
GW-SL-F-48	24" (610 mm)	78" (1981mm)
GW-SL-F-52	26" (660mm)	78" (1981mm)
GW-SL-F-56	28" (711mm)	78" (1981mm)
GW-SL-F-60	30" (762mm)	78" (1981mm)
GW-SL-F-64	32" (813mm)	78" (1981mm)
GW-SL-F-68	34" (864mm)	78" (1981mm)
GW-SL-F-72	36" (914mm)	78" (1981mm)

Shower Return Panel (for 90° Sliding Shower) skus:

PRODUCT SKU	PANEL WIDTH	PANEL HEIGHT
GW-SL-Return-30	30" (762mm)	78" (1981mm)
GW-SL-Return-32	32" (813mm)	78" (1981mm)
GW-SL-Return-34	34" (864mm)	78" (1981mm)
GW-SL-Return-36	36" (914mm)	78" (1981mm)
GW-SL-Return-38	38" (965mm)	78" (1981mm)
GW-SL-Return-40	40" (1016mm)	78" (1981mm)

Eclipse Round Slider Bath Height Glass Panels

Bath Sliding Door skus:

PRODUCT SKU	DOOR WIDTH	DOOR HEIGHT
GW-B-SL-D-56	29 1/2" (749mm)	59 3/4" (1517mm)
GW-B-SL-D-60	31 1/2" (800mm)	59 3/4" (1517mm)
GW-B-SL-D-72	37 1/2" (953mm)	59 3/4" (1517mm)

Bath Fixed Panel skus:

PRODUCT SKU	DOOR WIDTH	PANEL HEIGHT
GW-B-SL-F-56	28" (711mm)	60" (1524mm)
GW-B-SL-F-60	30" (762mm)	60" (1524mm)
GW-B-SL-F-72	36" (914mm)	60" (1524mm)

Eclipse Round Slider Full Height Glass Panels

FSS Shower Sliding Door skus:

PRODUCT SKU	DOOR WIDTH	DOOR HEIGHT
GW-FSS-SL-D-48-L	25 1/2" (648mm)	77 3/4" (1974mm)
GW-FSS-SL-D-48-R	25 1/2" (648mm)	77 3/4" (1974mm)
GW-FSS-SL-D-60-L	31 1/2" (800mm)	77 3/4" (1974mm)
GW-FSS-SL-D-60-R	31 1/2" (800mm)	77 3/4" (1974mm)

FSS Shower Fixed Panel skus:

PRODUCT SKU	PANEL WIDTH	PANEL HEIGHT
GW-FSS-SL-F-48	24" (610 mm)	78" (1981mm)
GW-FSS-SL-F-60	30" (762mm)	78" (1981mm)

Fluted Shower Sliding Door skus:

PRODUCT SKU	DOOR WIDTH	DOOR HEIGHT
GW-FSS-SL-D-48-L	25 1/2" (648mm)	77 3/4" (1974mm)
GW-FSS-SL-D-48-R	25 1/2" (648mm)	77 3/4" (1974mm)
GW-FSS-SL-D-60-L	31 1/2" (800mm)	77 3/4" (1974mm)
GW-FSS-SL-D-60-R	31 1/2" (800mm)	77 3/4" (1974mm)

Fluted Shower Fixed Panel skus:

PRODUCT SKU	PANEL WIDTH	PANEL HEIGHT
GW-FSS-SL-F-48	24" (610 mm)	78" (1981mm)
GW-FSS-SL-F-60	30" (762mm)	78" (1981mm)

Tinted Shower Sliding Door skus:

PRODUCT SKU	DOOR WIDTH	DOOR HEIGHT
Bronze-SL-D-60	31 1/2" (800mm)	77 3/4" (1974mm)
Grey-SL-D-60	31 1/2" (800mm)	77 3/4" (1974mm)

Tinted Shower Fixed Panel skus:

PRODUCT SKU	PANEL WIDTH	PANEL HEIGHT
Bronze-SL-F-60	30" (762mm)	78" (1981mm)
Grey-SL-F-60	30" (762mm)	78" (1981mm)

Eclipse Round Slider Bath Height Glass Panels

FSS Bath Sliding Door skus:

PRODUCT SKU	DOOR WIDTH	DOOR HEIGHT
GW-B-FSS-SL-D-60-L	31 1/2" (800mm)	59 3/4" (1517mm)
GW-B-FSS-SL-D-60-R	31 1/2" (800mm)	59 3/4" (1517mm)

FSS Bath Fixed Panel skus:

PRODUCT SKU	DOOR WIDTH	PANEL HEIGHT
GW-B-FSS-SL-F-60	30" (762mm)	60" (1524mm)

Fluted Bath Sliding Door skus:

PRODUCT SKU	DOOR WIDTH	DOOR HEIGHT
B-FL-SL-D-60-R	31 1/2" (800mm)	59 3/4" (1517mm)
B-FL-SL-D-60-L	31 1/2" (800mm)	59 3/4" (1517mm)

Fluted Bath Fixed Panel skus:

PRODUCT SKU	DOOR WIDTH	PANEL HEIGHT
B-FL-SL-F-60	30" (762mm)	60" (1524mm)

Tinted Bath Sliding Door skus:

PRODUCT SKU	DOOR WIDTH	DOOR HEIGHT
B-Bronze-SL-D-60	31 1/2" (800mm)	59 3/4" (1517mm)
B-Grey-SL-D-60	31 1/2" (800mm)	59 3/4" (1517mm)

Tinted Bath Fixed Panel skus:

PRODUCT SKU	DOOR WIDTH	PANEL HEIGHT
B-Bronze-SL-F-60	30" (762mm)	60" (1524mm)
B-Grey-SL-F-60	30" (762mm)	60" (1524mm)

ASTRO SLIDER SHOWER HARDWARE KITS



*GLASS SOLD SEPARATELY

Astro Slider Shower Hardware Kits

The Astro slider is a luxurious, modern, sliding shower door system with a square shaped header bar and round rollers. This sliding door system is designed to show more glass and less hardware while delivering quiet, smooth, easy door travel. The Astro system accommodates $\frac{5}{16}$ " (8mm) or $\frac{3}{8}$ " (10mm) thick tempered safety glass and allows for fixed and sliding panels to be reversible (panels available for purchase separately). Available in your choice of 5 superior slider hardware finishes.

ASTRO SLIDER KIT SKUS BY SIZE

- › AST-SLDK48-BB
- › AST-SLDK48-BN
- › AST-SLDK48-CH
- › AST-SLDK48-MB
- › AST-SLDK48-SB
- › AST-SLDK52-BB
- › AST-SLDK52-BN
- › AST-SLDK52-CH
- › AST-SLDK52-MB
- › AST-SLDK52-SB
- › AST-SLDK56-BB
- › AST-SLDK56-BN
- › AST-SLDK56-CH
- › AST-SLDK56-MB
- › AST-SLDK56-SB
- › AST-SLDK60-BB
- › AST-SLDK60-BN
- › AST-SLDK60-CH
- › AST-SLDK60-MB
- › AST-SLDK60-SB
- › AST-SLDK64-BB
- › AST-SLDK64-BN
- › AST-SLDK64-CH
- › AST-SLDK64-MB
- › AST-SLDK64-SB
- › AST-SLDK68-BB
- › AST-SLDK68-BN
- › AST-SLDK68-CH
- › AST-SLDK68-MB
- › AST-SLDK68-SB
- › AST-SLDK72-BB
- › AST-SLDK72-BN
- › AST-SLDK72-CH
- › AST-SLDK72-MB
- › AST-SLDK72-SB
- › AST-SLDK78-BB
- › AST-SLDK78-BN
- › AST-SLDK78-CH
- › AST-SLDK78-MB
- › AST-SLDK78-SB

ASTRO SLIDER KIT PARTS LIST

- › Slider Rod (1)
- › Rollers (2) and Roller Guides (2)
- › Door Handle (1)
- › Stoppers (2)
- › Slider Rod Mounting Brackets (2)
- › Slider Rod Fixed Panel Clamps (2)
- › Bottom Bracket Door Guide (1)
- › Fixed Panel Floor Clip (1)
- › Aluminum Drip Rail (1)
- › Plastic Seals (3)

ASTRO SLIDER KIT FEATURES

- › System designed for use with one sliding door and one fixed panel (glass not included)
- › High quality roller bearings assure smooth, quiet door movement
- › Circular shaped rollers and square shaped header bar
- › Choose from 5 superior hardware finishes
- › Choose from 8 different sizes to suit your space
- › All hardware required for installation of shower is included
- › Accommodates $\frac{5}{16}$ " (8mm) or $\frac{3}{8}$ " (10mm) thick tempered safety glass
- › Sliding door and fixed panel sold separately
- › AST-SLDK78 Rod is not predrilled

GLASS PANEL COMPATIBILITY

- › If purchasing FG Tempered glass for use with the Astro Sliding Door Shower Hardware Kits, please use sku chart on page 30.
- › All AST-SLDK78 Kits require glass fabrication

AVAILABLE FINISHES



Chrome Brushed Nickel Brushed Bronze Satin Brass Matte Black

Future Glass Tempered Glass Panels

Future Glass stocks glass panels to fit all Astro Square Slider Shower Hardware Kits. Please see tables below for panel sizing and component skus. The numeric value in the skus relates to the numeric values in the Astro Square Slider Shower Hardware Kit skus. For example: If you are purchasing an AST-SLDK-48 Hardware Kit, you would need a Door Panel (SQ-SL-D-48) and a Fixed Panel (SQ-SL-F-48) to complete your project. To view the complete collection, visit our website:

futureglass.us/collections/glass-panels

Astro Square Slider Full Height Glass Panels

Shower Sliding Door skus:

PRODUCT SKU	DOOR WIDTH	DOOR HEIGHT
SQ-SLD-D-48	25 1/2" (648mm)	77 3/4" (1974mm)
SQ-SLD-D-52	27 1/2" (699mm)	77 3/4" (1974mm)
SQ-SLD-D-56	29 1/2" (749mm)	77 3/4" (1974mm)
SQ-SLD-D-60	31 1/2" (800mm)	77 3/4" (1974mm)
SQ-SLD-D-64	33 1/2" (851mm)	77 3/4" (1974mm)
SQ-SLD-D-68	35 1/2" (902mm)	77 3/4" (1974mm)
SQ-SLD-D-72	37 1/2" (953mm)	77 3/4" (1974mm)

Shower Fixed Panel skus:

PRODUCT SKU	PANEL WIDTH	PANEL HEIGHT
SQ-SL-F-48	24" (610mm)	78" (1981mm)
SQ-SL-F-52	26" (660mm)	78" (1981mm)
SQ-SL-F-56	28" (711mm)	78" (1981mm)
SQ-SL-F-60	30" (762mm)	78" (1981mm)
SQ-SL-F-64	32" (813mm)	78" (1981mm)
SQ-SL-F-68	34" (864mm)	78" (1981mm)
SQ-SL-F-72	36" (914mm)	78" (1981mm)

Astro Square Slider Bath Height Glass Panels

Bath Sliding Door skus:

PRODUCT SKU	DOOR WIDTH	DOOR HEIGHT
B-SQ-SL-D-56	29 1/2" (749mm)	59 3/4" (1517mm)
B-SQ-SL-D-60	31 1/2" (800mm)	59 3/4" (1517mm)
B-SQ-SL-D-72	37 1/2" (953mm)	59 3/4" (1517mm)

Bath Fixed Panel skus:

PRODUCT SKU	DOOR WIDTH	PANEL HEIGHT
B-SQ-SL-F-56	28" (711mm)	60" (1524mm)
B-SQ-SL-F-60	30" (762mm)	60" (1524mm)
B-SQ-SL-F-72	36" (914mm)	60" (1524mm)



POLARIS DOUBLE SLIDER SHOWER HARDWARE KITS



*GLASS SOLD SEPARATELY

Polaris Double Slider Shower Hardware Kits

The Polaris slider is a luxurious, modern, double bypass sliding shower door that provides functionality and style with stainless steel header and hardware. Each door features a top roller fitting with four rollers that deliver quiet, smooth, easy door travel. With its versatile design the Polaris accommodates $\frac{5}{16}$ " (8mm) or $\frac{3}{8}$ " (10mm) thick tempered safety glass (sold separately). Available in your choice of 5 superior slider hardware finishes.

POLARIS SLIDER KIT SKUS BY FINISH

- › POL-SLDK73-CH (Chrome)
- › POL-SLDK73-SB (Satin Brass)
- › POL-SLDK73-BN (Brushed Nickel)
- › POL-SLDK73-MB (Matte Black)
- › POL-SLDK73-BB (Brushed Bronze)

POLARIS SLIDER KIT PARTS LIST

- › Slider Rod (1)
- › Rollers (8)
- › Towel Bar Door Handle (2)
- › Stoppers (2)
- › Slider Rod Mounting Brackets (2)
- › Bottom Bracket Door Guide (1)
- › L-shaped Jamb Seals (2)
- › Bottom Sweeps with Drip Rails (2)
- › Tool Kit and Rubber Blocks

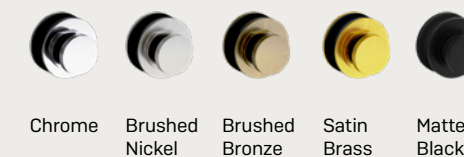
POLARIS SLIDER KIT FEATURES

- › System designed for use with two sliding bypass doors (glass sold separately)
- › High quality roller bearings assure smooth, quiet door movement
- › Circular shaped rollers and rectangular shaped rod
- › Choose from 5 superior hardware finishes
- › Undrilled 73" (1854 mm) cut-to-size kit
- › All hardware required for installation of shower is included
- › Accommodates $\frac{5}{16}$ " (8mm) or $\frac{3}{8}$ " (10mm) thick tempered safety glass

GLASS PANEL COMPATIBILITY

- › If purchasing Future Glass glass panels for use with the Polaris Double Slider Kits, choose two identical Door Panels from the list below and be sure to choose the correct height for your shower enclosure.
- › Full Height (78") Shower Door Panel: 2DSL-60
- › Bathtub Height (60" or 66") Shower Door Panels: B-2DSL60-60, B-2DSL60-66

AVAILABLE FINISHES

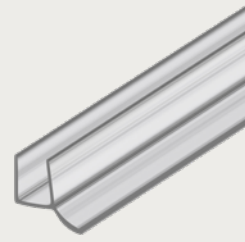


Chrome Brushed Nickel Brushed Bronze Satin Brass Matte Black

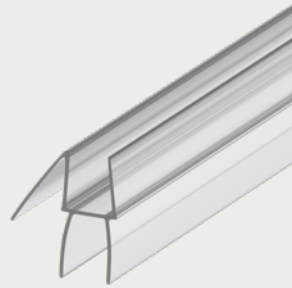
SEALS

SEGUE

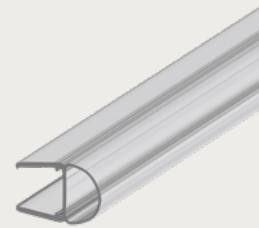
The Future Glass Segue seals are available in many configurations to fit your application, all made from high-quality materials. Simply snap into place on any 3/8" (10mm) thick frameless glass shower door to prevent water from seeping out of the enclosure.



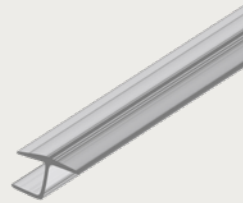
SEG-PVCS0138-CL
Segue 95" Dual Durometer PVC Seal and Wipe for 3/8" Glass



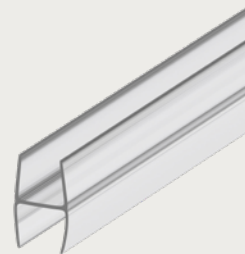
SEG-95BWDR38-CL
Segue 95" Co-Extruded Bottom Wipe with Drip Rail for 3/8" Glass



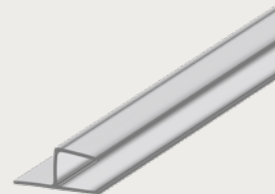
SEG-TVBS38-CL
Segue 95" Translucent Vinyl Bulb Seal for 3/8" Glass



SEG-SLYJ38-CL
Segue 95" Y' Jamb Seal with Soft Leg for 3/8" Glass



SEG-MPHW38-CL
Segue 95" Soft Fin 'H' Wipe for 3/8" Glass- Softer Durometer



SEG-PCHJ38-CL
Segue 95" 180-Degree Polycarbonate H-Jamb for 3/8" Glass



SEG-36BWDR38-CL
Segue 36" Co-Extruded Bottom Wipe with Drip Rail for 3/8" Glass

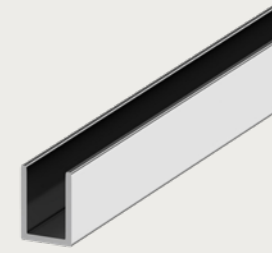
SEGUE FEATURES

- › Made from crystal-clear polycarbonate
- › 95" (241 cm) in length except SEG-36BWDR38-CL which is 36" (92 cm) in length
- › Our Segue seals work with all 3/8" thickness tempered safety glass panels

CHANNELS

CETUS

Future Glass U-Channels are made from high-quality aluminum and designed to secure a fixed glass panel to the wall, floor, ceiling, or threshold. Made to fit 3/8" (10mm) glass, these high-profile U-Channels are 3/4" deep and provide flexibility for enclosure installation with out of plumb dimensions.



CET-34UC38
Cetus 3/4" Deep U-Channel for 3/8" Fixed Glass Shower Panel

CETUS FEATURES

- › Available in 95" lengths
- › 3/4" Deep U-Channel aluminum construction
- › Our Cetus channels work with all 3/8" thickness glass panels
- › Choose from six superior hardware finishes

GLASS PANEL COMPATIBILITY

- › Our Cetus models are compatible with our current range of FG Glass Panels with 3/8" thickness. Please refer to website for additional technical and glass cutout details

AVAILABLE FINISHES



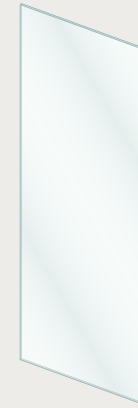
GLASS PANELS

Future Glass offers the largest variety of glass panel sizing options to suit a host of environments and bathroom sizes. This variety provides the same benefits as custom glass without the custom price tag. Using Future Glass' fixed, hinge, and door panels along with our variety of hardware designs, you can complete fully frameless shower enclosures to fit almost any space.



*HARDWARE NOT INCLUDED

SHOWER SINGLE FIXED PANELS



FEATURES

- › Available in widths from 4" to 60"
- › Panel height 78"
- › Panel thickness 3/8" (10mm)
- › Premium ANSI certified tempered safety glass
- › Panel front and back treated with EnduroShield
- › Compatible with COV-GWCLIP

Sizes Available by SKU

GW-F-4	4" x 78"	GW-F-18	18" x 78"	GW-F-32	32" x 78"
GW-F-4.50	4 1/2" x 78"	GW-F-18.50	18 1/2" x 78"	GW-F-32.50	32 1/2" x 78"
GW-F-5	5" x 78"	GW-F-19	19" x 78"	GW-F-33	33" x 78"
GW-F-5.50	5 1/2" x 78"	GW-F-19.50	19 1/2" x 78"	GW-F-33.50	33 1/2" x 78"
GW-F-6	6" x 78"	GW-F-20	20" x 78"	GW-F-34	34" x 78"
GW-F-6.50	6 1/2" x 78"	GW-F-20.50	20 1/2" x 78"	GW-F-34.50	34 1/2" x 78"
GW-F-7	7" x 78"	GW-F-21	21" x 78"	GW-F-35	35" x 78"
GW-F-7.50	7 1/2" x 78"	GW-F-21.50	21 1/2" x 78"	GW-F-35.50	35 1/2" x 78"
GW-F-8	8" x 78"	GW-F-22	22" x 78"	GW-F-36	36" x 78"
GW-F-8.5	8 1/2" x 78"	GW-F-22.50	22 1/2" x 78"	GW-F-36.50	36 1/2" x 78"
GW-F-9	9" x 78" w	GW-F-23	23" x 78"	GW-F-37	37" x 78"
GW-F-9.5	9 1/2" x 78"	GW-F-23.50	23 1/2" x 78"	GW-F-37.50	37 1/2" x 78"
GW-F-10	10" x 78"	GW-F-24	24" x 78"	GW-F-38	38" x 78"
GW-F-10.50	10 1/2" x 78"	GW-F-24.50	24 1/2" x 78"	GW-F-39	39" x 78"
GW-F-11	11" x 78"	GW-F-25	25" x 78"	GW-F-40	40" x 78"
GW-F-11.50	11 1/2" x 78"	GW-F-25.50	25 1/2" x 78"	GW-F-41	41" x 78"
GW-F-12	12" x 78"	GW-F-26	26" x 78"	GW-F-42	42" x 78"
GW-F-12.50	12 1/2" x 78"	GW-F-26.50	26 1/2" x 78"	GW-F-43	43" x 78"
GW-F-13	13" x 78"	GW-F-27	27" x 78"	GW-F-44	44" x 78"
GW-F-13.50	13 1/2" x 78"	GW-F-27.50	27 1/2" x 78"	GW-F-45	45" x 78"
GW-F-14	14" x 78"	GW-F-28	28" x 78"	GW-F-46	46" x 78"
GW-F-14.50	14 1/2" x 78"	GW-F-28.50	28 1/2" x 78"	GW-F-47	47" x 78"
GW-F-15	15" x 78"	GW-F-29	29" x 78"	GW-F-48	48" x 78"
GW-F-15.50	15 1/2" x 78"	GW-F-29.50	29 1/2" x 78"	GW-F-49	49" x 78"
GW-F-16	16" x 78"	GW-F-30	30" x 78"	GW-F-50	50" x 78"
GW-F-16.50	16 1/2" x 78"	GW-F-30.50	30 1/2" x 78"	GW-F-55	55" x 78"
GW-F-17	17" x 78"	GW-F-31	31" x 78"	GW-F-60	60" x 78"
GW-F-17.50	17 1/2" x 78"	GW-F-31.50	31 1/2" x 78"		

FUTUREGLASS

SHOWER BRONZE TINTED
SINGLE FIXED PANEL



FEATURES

- › Available 30" and 36" widths
- › Panel height 78"
- › Panel thickness 3/8" (10mm)
- › Premium ANSI certified tempered safety glass
- › Panel front and back treated with EnduroShield
- › Compatible with COV-GWCLIP

Sizes Available by SKU	
Bronze-F-30	30" x 78"
Bronze-F-36	36" x 78"

SHOWER GREY TINTED
SINGLE FIXED PANEL



FEATURES

- › Available 30" and 36" widths
- › Panel height 78"
- › Panel thickness 3/8" (10mm)
- › Premium ANSI certified tempered safety glass
- › Panel front and back treated with EnduroShield
- › Compatible with COV-GWCLIP

Sizes Available by SKU	
Grey-F-30	30" x 78"
Grey-F-36	36" x 78"



* Bronze-F-36 shown with COV-GWCLIP-PN (sold separately)

SHOWER RADIUS SINGLE FIXED PANEL

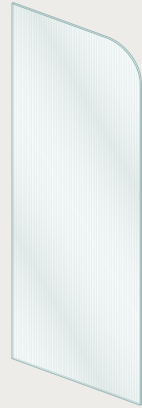


FEATURES

- › Available in widths from 30" to 40"
- › Panel height 78"
- › Panel thickness 3/8" (10mm)
- › Premium ANSI certified tempered safety glass
- › Panel front and back treated with EnduroShield
- › Compatible with COV-GWCLIP

Sizes Available by SKU	
GW-F-RAD-30	30" x 78"
GW-F-RAD-32	32" x 78"
GW-F-RAD-34	34" x 78"
GW-F-RAD-36	36" x 78"
GW-F-RAD-38	38" x 78"
GW-F-RAD-40	40" x 78"

SHOWER FLUTED RADIUS SINGLE FIXED PANEL



FEATURES

- › Available in widths from 30" to 40"
- › Panel height 78"
- › Panel thickness 3/8" (10mm)
- › Premium ANSI certified tempered safety glass
- › Panel back treated with EnduroShield
- › Compatible with COV-GWCLIP
- › Available in Right and Left variations to suit any space

Sizes Available by SKU	
FL-RAD-30-L	30" x 78"
FL-RAD-30-R	30" x 78"
FL-RAD-32-L	32" x 78"
FL-RAD-32-R	32" x 78"
FL-RAD-34-L	34" x 78"
FL-RAD-34-R	34" x 78"
FL-RAD-36-L	36" x 78"
FL-RAD-36-R	36" x 78"
FL-RAD-38-L	38" x 78"
FL-RAD-38-R	38" x 78"
FL-RAD-40-L	40" x 78"
FL-RAD-40-R	40" x 78"

SHOWER FLUTED SINGLE FIXED PANEL



FEATURES

- › Available in widths from 30" to 40"
- › Panel height 78"
- › Panel thickness 3/8" (10mm)
- › Premium ANSI certified tempered safety glass
- › Panel back treated with EnduroShield
- › Compatible with COV-GWCLIP

Sizes Available by SKU	
GW-F-FL-30	30" x 78"
GW-F-FL-32	32" x 78"
GW-F-FL-34	34" x 78"
GW-F-FL-36	36" x 78"
GW-F-FL-38	38" x 78"
GW-F-FL-40	40" x 78"

SHOWER FRENCH MONTURE SINGLE FIXED PANEL

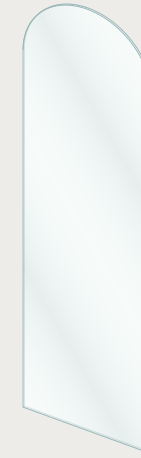


FEATURES

- › Available in widths from 30" to 40"
- › Panel height 78"
- › Panel thickness 3/8" (10mm)
- › Premium ANSI certified tempered safety glass
- › Panel front and back treated with EnduroShield
- › Compatible with COV-GWCLIP

Sizes Available by SKU	
GW-F-SS-30	30" x 78"
GW-F-SS-32	32" x 78"
GW-F-SS-34	34" x 78"
GW-F-SS-36	36" x 78"
GW-F-SS-38	38" x 78"
GW-F-SS-40	40" x 78"

SHOWER ARCHED SINGLE FIXED PANEL



FEATURES

- › Available in widths from 28" to 34"
- › Panel height 86 3/4"
- › Panel thickness 3/8" (10mm)
- › Premium ANSI certified tempered safety glass
- › Panel front and back treated with EnduroShield
- › Compatible with COV-GWCLIP

Sizes Available by SKU	
GW-ARC-28	28" x 86 3/4"
GW-ARC-30	30" x 86 3/4"
GW-ARC-32	32" x 86 3/4"
GW-ARC-34	34" x 86 3/4"

SHOWER ARCHED FLUTED SINGLE FIXED PANEL



FEATURES

- › Available in widths from 28" to 34"
- › Panel height 86 3/4"
- › Panel thickness 3/8" (10mm)
- › Premium ANSI certified tempered safety glass
- › Panel back treated with EnduroShield
- › Compatible with COV-GWCLIP

Sizes Available by SKU	
GW-FL-ARC-28	28" x 86 3/4"
GW-FL-ARC-30	30" x 86 3/4"
GW-FL-ARC-32	32" x 86 3/4"
GW-FL-ARC-34	34" x 86 3/4"

SHOWER DOORS



Sizes Available by SKU	
GW-D-24	24" x 77 3/4"
GW-D-24.25	24 1/4" x 77 3/4"
GW-D-24.5	24 1/2" x 77 3/4"
GW-D-24.75	24 3/4" x 77 3/4"
GW-D-25	25" x 77 3/4"
GW-D-25.25	25 1/4" x 77 3/4"
GW-D-25.50	25 1/2" x 77 3/4"
GW-D-25.75	25 3/4" x 77 3/4"
GW-D-26	26" x 77 3/4"
GW-D-26.25	26 1/4" x 77 3/4"
GW-D-26.50	26 1/2" x 77 3/4"
GW-D-26.75	26 3/4" x 77 3/4"
GW-D-27	27" x 77 3/4"
GW-D-27.25	27 1/4" x 77 3/4"
GW-D-27.50	27 1/2" x 77 3/4"
GW-D-27.75	27 3/4" x 77 3/4"
GW-D-28	28" x 77 3/4"
GW-D-28.25	28 1/4" x 77 3/4"
GW-D-28.50	28 1/2" x 77 3/4"
GW-D-28.75	28 3/4" x 77 3/4"
GW-D-29	29" x 77 3/4"
GW-D-29.25	29 1/4" x 77 3/4"
GW-D-29.5	29 1/2" x 77 3/4"
GW-D-29.75	29 3/4" x 77 3/4"
GW-D-30	30" x 77 3/4"

FEATURES

- › Available in widths from 24" to 30"
- › Panel height 77 3/4"
- › Panel thickness 3/8" (10mm)
- › Premium ANSI certified tempered safety glass
- › Panel front and back treated with EnduroShield
- › Compatible with our FG Gamma and Pegasus Hinge Collections. Please refer to website for additional technical and glass cutout details
- › Compatible with HAE-STHDS6, HAL-RTHDS6, MEA-MTHDS6 and HYP-LSHDS6 Handles

SHOWER TOWEL BAR DOORS

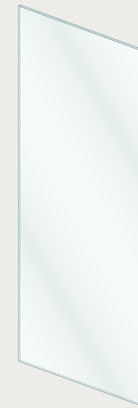


FEATURES

- › Available in widths from 26" to 28.25"
- › Panel height 77 3/4"
- › Panel thickness 3/8" (10mm)
- › Premium ANSI certified tempered safety glass
- › Panel front and back treated with EnduroShield
- › Compatible with our FG Gamma and Pegasus Hinge Collections. Please refer to website for additional technical and glass cutout details
- › Compatible with HAE-6X22 Towel Bar Handle

Sizes Available by SKU	
GW-DTB-26	26" x 77 3/4"
GW-DTB-26.25	26.25" x 77 3/4"
GW-DTB-28	28" x 77 3/4"
GW-DTB-28.25	28.25" x 77 3/4"

SHOWER HINGE PANELS



FEATURES

- › Available in widths from 4" to 35"
- › Panel height 78"
- › Panel thickness 3/8" (10mm)
- › Premium ANSI certified tempered safety glass
- › Panel front and back treated with EnduroShield
- › Compatible with our FG Gamma and Pegasus Hinge Collections. Please refer to website for additional technical and glass cutout details

Sizes Available by SKU					
GW-H-4	4" x 78"	GW-H-14	14" x 78"	GW-H-25.50	25 1/2" x 78"
GW-H-4.25	4 1/4" x 78"	GW-H-14.50	14 1/2" x 78"	GW-H-26	26" x 78"
GW-H-4.50	4 1/2" x 78"	GW-H-15	15" x 78"	GW-H-26.50	26 1/2" x 78"
GW-H-4.75	4 3/4" x 78"	GW-H-15.50	15 1/2" x 78"	GW-H-27	27" x 78"
GW-H-5	5" x 78"	GW-H-16	16" x 78"	GW-H-27.25	27 1/4" x 78"
GW-H-5.50	5 1/2" x 78"	GW-H-16.50	16 1/2" x 78"	GW-H-27.50	27 1/2" x 78"
GW-H-6	6" x 78"	GW-H-17	17" x 78"	GW-H-28	28" x 78"
GW-H-6.50	6 1/2" x 78"	GW-H-17.50	17 1/2" x 78"	GW-H-28.25	28 1/4" x 78"
GW-H-7	7" x 78"	GW-H-18	18" x 78"	GW-H-28.50	28 1/2" x 78"
GW-H-7.50	7 1/2" x 78"	GW-H-18.50	18 1/2" x 78"	GW-H-29	29" x 78"
GW-H-8	8" x 78"	GW-H-19	19" x 78"	GW-H-29.50	29 1/2" x 78"
GW-H-8.50	8 1/2" x 78"	GW-H-19.50	19 1/2" x 78"	GW-H-30	30" x 78"
GW-H-9	9" x 78"	GW-H-20	20" x 78"	GW-H-30.50	30 1/2" x 78"
GW-H-9.50	9 1/2" x 78"	GW-H-20.50	20 1/2" x 78"	GW-H-31	31" x 78"
GW-H-10	10" x 78"	GW-H-21	21" x 78"	GW-H-31.50	31 1/2" x 78"
GW-H-10.50	10 1/2" x 78"	GW-H-21.50	21 1/2" x 78"	GW-H-32	32" x 78"
GW-H-11	11" x 78"	GW-H-22	22" x 78"	GW-H-32.50	32 1/2" x 78"
GW-H-11.50	11 1/2" x 78"	GW-H-22.50	22 1/2" x 78"	GW-H-33	33" x 78"
GW-H-12	12" x 78"	GW-H-23	23" x 78"	GW-H-33.50	33 1/2" x 78"
GW-H-12.50	12 1/2" x 78"	GW-H-23.50	23 1/2" x 78"	GW-H-34	34" x 78"
GW-H-12.75	12 3/4" x 78"	GW-H-24	24" x 78"	GW-H-34.50	34 1/2" x 78"
GW-H-13	13" x 78"	GW-H-24.50	24 1/2" x 78"	GW-H-35	35" x 78"
GW-H-13.50	13 1/2" x 78"	GW-H-25	25" x 78"		

SHOWER ROUND SLIDER DOOR

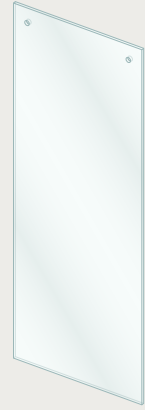


FEATURES

- › Pairs with corresponding Round Slider Fixed Panel to fit alcoves from 44" to 72"
- › Panel height 77 3/4"
- › Panel thickness 3/8" (10mm)
- › Premium ANSI certified tempered safety glass
- › Panel front and back treated with EnduroShield
- › Compatible with ECL-SLDK Sliding Shower Hardware kits

Sizes Available by SKU	
GW-SL-D-48	25 1/2" x 77 3/4"
GW-SL-D-52	27 1/2" x 77 3/4"
GW-SL-D-56	29 1/2" x 77 3/4"
GW-SL-D-60	31 1/2" x 77 3/4"
GW-SL-D-64	33 1/2" x 77 3/4"
GW-SL-D-68	35 1/2" x 77 3/4"
GW-SL-D-72	37 1/2" x 77 3/4"

SHOWER ROUND SLIDER FIXED PANEL



FEATURES

- › Pairs with corresponding Round Slider Door to fit alcoves from 44" to 72"
- › Panel height 78"
- › Panel thickness 3/8" (10mm)
- › Premium ANSI certified tempered safety glass
- › Panel front and back treated with EnduroShield
- › Compatible with ECL-SLDK Sliding Shower Hardware kits

Sizes Available by SKU	
GW-SL-F-48	24" x 78"
GW-SL-F-52	26" x 78"
GW-SL-F-56	28" x 78"
GW-SL-F-60	30" x 78"
GW-SL-F-64	32" x 78"
GW-SL-F-68	34" x 78"
GW-SL-F-72	36" x 78"

SHOWER ROUND SLIDER RETURN PANEL (90° ONLY)



FEATURES

- › Available in widths from 30" to 36"
- › Panel height 78"
- › Panel thickness 3/8" (10mm)
- › Premium ANSI certified tempered safety glass
- › Panel front and back treated with EnduroShield
- › Compatible with ECL-SLDK Sliding Shower Hardware kits

Sizes Available by SKU	
GW-SL-Return-30	30" x 78"
GW-SL-Return-32	32" x 78"
GW-SL-Return-34	34" x 78"
GW-SL-Return-36	36" x 78"
GW-SL-Return-38	38" x 78"
GW-SL-Return-40	40" x 78"

SHOWER SQUARE SLIDER DOOR

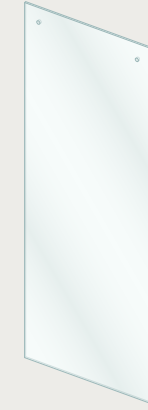


FEATURES

- › Pairs with corresponding Square Slider Fixed Panel to fit alcoves from 44" to 72"
- › Panel height 77 3/4"
- › Panel thickness 5/16" (8mm)
- › Premium ANSI certified tempered safety glass
- › Panel front and back treated with EnduroShield
- › Compatible with AST-SLDK Sliding Shower Hardware kits

Sizes Available by SKU	
GW-SQ-SL-D-48	25 1/2" x 77 3/4"
GW-SQ-SL-D-52	27 1/2" x 77 3/4"
GW-SQ-SL-D-56	29 1/2" x 77 3/4"
GW-SQ-SL-D-60	31 1/2" x 77 3/4"
GW-SQ-SL-D-64	33 1/2" x 77 3/4"
GW-SQ-SL-D-68	35 1/2" x 77 3/4"
GW-SQ-SL-D-72	37 1/2" x 77 3/4"

SHOWER SQUARE SLIDER FIXED PANEL



FEATURES

- › Pairs with corresponding Square Slider Door to fit alcoves from 44" to 72"
- › Panel height 78"
- › Panel thickness 5/16" (8mm)
- › Premium ANSI certified tempered safety glass
- › Panel front and back treated with EnduroShield
- › Compatible with AST-SLDK Sliding Shower Hardware kits

Sizes Available by SKU	
GW-SQ-SL-F-48	24" x 78"
GW-SQ-SL-F-52	26" x 78"
GW-SQ-SL-F-56	28" x 78"
GW-SQ-SL-F-60	30" x 78"
GW-SQ-SL-F-64	32" x 78"
GW-SQ-SL-F-68	34" x 78"
GW-SQ-SL-F-72	36" x 78"

SHOWER DOUBLE SLIDER DOOR



FEATURES

- › Purchase two of these Double Slider Doors to fill 56" to 60" alcoves
- › Panel height 78"
- › Panel thickness 3/8" (10mm)
- › Premium ANSI certified tempered safety glass
- › Panel front and back treated with EnduroShield
- › Compatible with POL-SLDK73 Sliding Shower Hardware kits

Sizes Available by SKU	
2DSL-60	31" x 78"

SHOWER BRONZE TINTED
ROUND SLIDER DOOR



FEATURES

- › Pairs with corresponding Bronze Tinted Round Slider Fixed Panel to fit 60" alcoves
- › Panel height 77 3/4"
- › Panel thickness 3/8" (10mm)
- › Premium ANSI certified tempered safety glass
- › Panel front and back treated with EnduroShield
- › Compatible with ECL-SLDK Sliding Shower Hardware kits

Sizes Available by SKU

Bronze-SL-D-60	31 1/2" x 77 3/4"
----------------	-------------------

SHOWER BRONZE TINTED
ROUND SLIDER FIXED PANEL



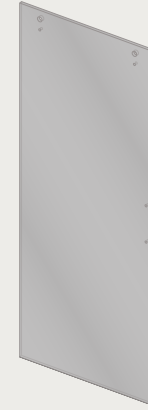
FEATURES

- › Pairs with corresponding Bronze Tinted Round Slider Door to fit 60" alcoves
- › Panel height 78"
- › Panel thickness 3/8" (10mm)
- › Premium ANSI certified tempered safety glass
- › Panel front and back treated with EnduroShield
- › Compatible with ECL-SLDK Sliding Shower Hardware kits

Sizes Available by SKU

Bronze-SL-F-60	30" x 78"
----------------	-----------

SHOWER GREY TINTED
ROUND SLIDER DOOR



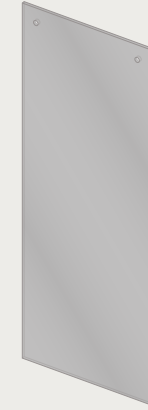
FEATURES

- › Pairs with corresponding Grey Tinted Round Slider Fixed Panel to fit 60" alcoves
- › Panel height 77 3/4"
- › Panel thickness 3/8" (10mm)
- › Premium ANSI certified tempered safety glass
- › Panel front and back treated with EnduroShield
- › Compatible with ECL-SLDK Sliding Shower Hardware kits

Sizes Available by SKU

Grey-SL-D-60	31 1/2" x 77 3/4"
--------------	-------------------

SHOWER GREY TINTED
ROUND SLIDER FIXED PANEL



FEATURES

- › Pairs with corresponding Grey Tinted Round Slider Door to fit 60" alcoves
- › Panel height 78"
- › Panel thickness 3/8" (10mm)
- › Premium ANSI certified tempered safety glass
- › Panel front and back treated with EnduroShield
- › Compatible with ECL-SLDK Sliding Shower Hardware kits

Sizes Available by SKU

Grey-SL-F-60	30" x 78"
--------------	-----------



SHOWER FRENCH MONTURE
SLIDER DOOR



FEATURES

- › Pairs with corresponding French Monture Slider Fixed Panel to fit 44" to 48" and 56" to 60" alcoves
- › Panel height 77 3/4"
- › Panel thickness 3/8" (10mm)
- › Premium ANSI certified tempered safety glass
- › Panel front and back treated with EnduroShield
- › Compatible with ECL-SLDK Sliding Shower Hardware kits
- › Available in Right and Left variations

Sizes Available by SKU	
GW-FSS-SL-D-48-L	25 1/2" x 77 3/4"
GW-FSS-SL-D-48-R	25 1/2" x 77 3/4"
GW-FSS-SL-D-60-L	31 1/2" x 77 3/4"
GW-FSS-SL-D-60-R	31 1/2" x 77 3/4"

SHOWER FRENCH MONTURE
SLIDER FIXED PANEL



FEATURES

- › Pairs with corresponding French Monture Slider Door Panel to fit 44" to 48" and 56" to 60" alcoves
- › Panel height 78"
- › Panel thickness 3/8" (10mm)
- › Premium ANSI certified tempered safety glass
- › Panel front and back treated with EnduroShield
- › Compatible with ECL-SLDK Sliding Shower Hardware kits
- › Works with Right and Left variations

Sizes Available by SKU	
GW-FSS-SL-F-48	24" x 78"
GW-FSS-SL-F-60	30" x 78"

* GW-FSS-SL-D-60-R and GW-FSS-SL-F-60 shown with ECL-SLDK60-MB

FUTUREGLASS

SHOWER FLUTED
ROUND SLIDER DOOR

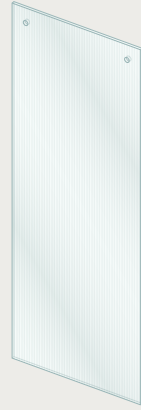


FEATURES

- › Pairs with corresponding Fluted Fixed Panel to fit 56" to 60" alcoves
- › Panel height 77 3/4"
- › Panel thickness 3/8" (10mm)
- › Premium ANSI certified tempered safety glass
- › Panel back treated with EnduroShield
- › Compatible with ECL-SLDK Sliding Shower Hardware kits
- › Available in Right and Left variations

Sizes Available by SKU	
FL-SL-D-60-L	31 1/2" x 77 3/4"
FL-SL-D-60-R	31 1/2" x 77 3/4"

SHOWER FLUTED
ROUND SLIDER FIXED PANEL



FEATURES

- › Pairs with corresponding Fluted Slider Door Panel to fit 56" to 60" alcoves
- › Panel height 78"
- › Panel thickness 3/8" (10mm)
- › Premium ANSI certified tempered safety glass
- › Panel back treated with EnduroShield
- › Compatible with ECL-SLDK Sliding Shower Hardware kits
- › Works with Right and Left variations

Sizes Available by SKU	
FL-SL-F-60	30" x 78"



* FL-SL-D-60-L and FL-SL-F-60 shown with ECL-SLDK60-BB

BATH SINGLE FIXED PANELS



FEATURES

- › Available in widths from 15" to 34"
- › Panel height 58 1/4"
- › Panel thickness 3/8" (10mm)
- › Premium ANSI certified tempered safety glass
- › Panel front and back treated with EnduroShield
- › Compatible with COV-GWCLIP

Sizes Available by SKU			
GW-BF-15	15" x 58 1/4"	GW-BF-25	25" x 58 1/4"
GW-BF-15.5	15 1/2" x 58 1/4"	GW-BF-25.5	25 1/2" x 58 1/4"
GW-BF-16	16" x 58 1/4"	GW-BF-26	26" x 58 1/4"
GW-BF-16.50	16 1/2" x 58 1/4"	GW-BF-26.5	26 1/2" x 58 1/4"
GW-BF-17	17" x 58 1/4"	GW-BF-27	27" x 58 1/4"
GW-BF-17.50	17 1/2" x 58 1/4"	GW-BF-27.5	27 1/2" x 58 1/4"
GW-BF-18	18" x 58 1/4"	GW-BF-28	28" x 58 1/4"
GW-BF-18.50	18 1/2" x 58 1/4"	GW-BF-28.5	28 1/2" x 58 1/4"
GW-BF-19	19" x 58 1/4"	GW-BF-29	29" x 58 1/4"
GW-BF-19.5	19 1/2" x 58 1/4"	GW-BF-29.5	29 1/2" x 58 1/4"
GW-BF-20	20" x 58 1/4"	GW-BF-30	30" x 58 1/4"
GW-BF-20.5	20 1/2" x 58 1/4"	GW-BF-30.5	30 1/2" x 58 1/4"
GW-BF-21	21" x 58 1/4"	GW-BF-31	31" x 58 1/4"
GW-BF-21.5	21 1/2" x 58 1/4"	GW-BF-31.5	31 1/2" x 58 1/4"
GW-BF-22	22" x 58 1/4"	GW-BF-32	32" x 58 1/4"
GW-BF-22.5	22 1/2" x 58 1/4"	GW-BF-32.5	32 1/2" x 58 1/4"
GW-BF-23	23" x 58 1/4"	GW-BF-33	33" x 58 1/4"
GW-BF-23.5	23 1/2" x 58 1/4"	GW-BF-33.5	33 1/2" x 58 1/4"
GW-BF-24	24" x 58 1/4"	GW-BF-34	34" x 58 1/4"
GW-BF-24.5	24 1/2" x 58 1/4"		

BATH BRONZE TINTED SINGLE FIXED PANEL



FEATURES

- › Available in 34" width
- › Panel height 58 1/4"
- › Panel thickness 3/8" (10mm)
- › Premium ANSI certified tempered safety glass
- › Panel front and back treated with EnduroShield
- › Compatible with COV-GWCLIP

Sizes Available by SKU	
BF-Bronze-34	34" x 58 1/4"

BATH GREY TINTED SINGLE FIXED PANEL



FEATURES

- › Available in 34" width
- › Panel height 58 1/4"
- › Panel thickness 3/8" (10mm)
- › Premium ANSI certified tempered safety glass
- › Panel front and back treated with EnduroShield
- › Compatible with COV-GWCLIP

Sizes Available by SKU	
BF-Grey-34	34" x 58 1/4"

FUTUREGLASS

BATH RADIUS
SINGLE FIXED PANEL



FEATURES

- › Available in 30" and 34" widths
- › Panel height 58 1/4"
- › Panel thickness 3/8" (10mm)
- › Premium ANSI certified tempered safety glass
- › Panel front and back treated with EnduroShield
- › Compatible with COV-GWCLIP

Sizes Available by SKU

GW-B-RAD-30	30" x 58 1/4"
B-RAD-34	34" x 58 1/4"

BATH FLUTED RADIUS
SINGLE FIXED PANEL



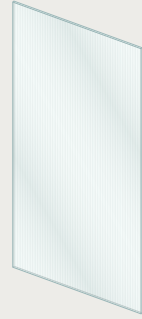
FEATURES

- › Available in 30" and 34" widths
- › Panel height 58 1/4"
- › Panel thickness 3/8" (10mm)
- › Premium ANSI certified tempered safety glass
- › Panel front and back treated with EnduroShield
- › Compatible with COV-GWCLIP
- › Available in Right and Left variations to suit any space

Sizes Available by SKU

GW-B-FL-RAD-30-L	30" x 58 1/4"
GW-B-FL-RAD-30-R	30" x 58 1/4"
GW-B-FL-RAD-34-L	34" x 58 1/4"
GW-B-FL-RAD-34-R	34" x 58 1/4"

BATH FLUTED
SINGLE FIXED PANEL



FEATURES

- › Available in 30" and 34" widths
- › Panel height 58 1/4"
- › Panel thickness 3/8" (10mm)
- › Premium ANSI certified tempered safety glass
- › Panel back treated with EnduroShield
- › Compatible with COV-GWCLIP

Sizes Available by SKU

GW-B-FL-30	30" x 58 1/4"
GW-B-FL-34	34" x 58 1/4"



* BF-Grey-34 shown with COV-GWCLIP-BN (sold separately)

BATH FRENCH MONTURE
SINGLE FIXED PANEL

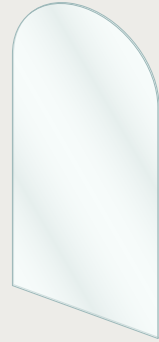


FEATURES

- › Available in 30" and 34" widths
- › Panel height 58 1/4"
- › Panel thickness 3/8" (10mm)
- › Premium ANSI certified tempered safety glass
- › Panel front and back treated with EnduroShield
- › Compatible with COV-GWCLIP

Sizes Available by SKU	
GW-B-FSS-30	30" x 58 1/4"
GW-B-FSS-34	34" x 58 1/4"

BATH ARCHED
SINGLE FIXED PANEL

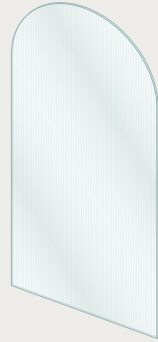


FEATURES

- › Available in 34" width
- › Panel height 66 3/4"
- › Panel thickness 3/8" (10mm)
- › Premium ANSI certified tempered safety glass
- › Panel front and back treated with EnduroShield
- › Compatible with COV-GWCLIP

Sizes Available by SKU	
GW-B-ARC-34	34" x 66 3/4"

BATH ARCHED FLUTED
SINGLE FIXED PANEL



FEATURES

- › Available in 34" width
- › Panel height 66 3/4"
- › Panel thickness 3/8" (10mm)
- › Premium ANSI certified tempered safety glass
- › Panel back treated with EnduroShield
- › Compatible with COV-GWCLIP

Sizes Available by SKU	
GW-B-FL-ARC-34	34" x 66 3/4"

BATH DOORS



FEATURES

- › Available in 17", 31 1/4", 31 1/2" and 34" widths
- › Panel height 58"
- › Panel thickness 3/8" (10mm)
- › Premium ANSI certified tempered safety glass
- › Panel front and back treated with EnduroShield
- › Compatible with our FG Gamma and Pegasus Hinge Collections. Please refer to website for additional technical and glass cutout details
- › Compatible with HTG-GWKNOB, HTG-RKDS and KES-SKDS Knobs

Sizes Available by SKU	
GW-BD-17	17" x 58"
GW-BD-31.25	31 1/4" x 58"
GW-BD-31.50	31 1/2" x 58"
GW-BD-34	34" x 58"

BATH HINGE PANEL



FEATURES

- › Available in 17" width
- › Panel height 58 1/4"
- › Panel thickness 3/8" (10mm)
- › Premium ANSI certified tempered safety glass
- › Panel front and back treated with EnduroShield
- › Compatible with our FG Gamma and Pegasus Hinge Collections. Please refer to website for additional technical and glass cutout details

Sizes Available by SKU	
GW-BH-17	17" x 58 1/4"

BATH ROUND SLIDER DOOR



FEATURES

- › Pairs with corresponding Bath Round Slider Fixed Panel to fit alcoves from 52" to 60" and 68" to 72"
- › Panel height 59 3/4"
- › Panel thickness 3/8" (10mm)
- › Premium ANSI certified tempered safety glass
- › Panel front and back treated with EnduroShield
- › Compatible with ECL-SLDK Sliding Shower Hardware kits

Sizes Available by SKU	
GW-BATH-SL-D-56	29 1/2" x 59 3/4"
GW-BATH-SL-D-60	31 1/2" x 59 3/4"
GW-BATH-SL-D-72	37 1/2" x 59 3/4"

BATH ROUND SLIDER FIXED PANEL

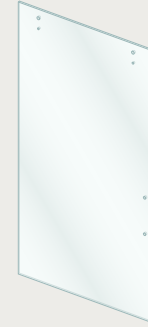


FEATURES

- › Pairs with corresponding Bath Round Slider Door to fit alcoves from 52" to 60" and 68" to 72"
- › Panel height 60"
- › Panel thickness 3/8" (10mm)
- › Premium ANSI certified tempered safety glass
- › Panel front and back treated with EnduroShield
- › Compatible with ECL-SLDK Sliding Shower Hardware kits

Sizes Available by SKU	
GW-BATH-SL-F-56	28" x 60"
GW-BATH-SL-F-60	30" x 60"
GW-BATH-SL-F-72	36" x 60"

BATH SQUARE SLIDER DOOR

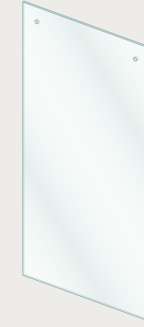


FEATURES

- › Pairs with corresponding Bath Square Slider Fixed Panel to fit alcoves from 52" to 60" and 68" to 72"
- › Panel height 59 3/4"
- › Panel thickness 5/16" (8mm)
- › Premium ANSI certified tempered safety glass
- › Panel front and back treated with EnduroShield
- › Compatible with AST-SLDK Sliding Shower Hardware kits

Sizes Available by SKU	
GW-B-SQ-SL-D-56	29 1/2" x 59 3/4"
GW-B-SQ-SL-D-60	31 1/2" x 59 3/4"
GW-B-SQ-SL-D-72	37 1/2" x 59 3/4"

BATH SQUARE SLIDER FIXED PANEL



FEATURES

- › Pairs with corresponding Bath Square Slider Door to fit alcoves from 52" to 60" and 68" to 72"
- › Panel height 60"
- › Panel thickness 5/16" (8mm)
- › Premium ANSI certified tempered safety glass
- › Panel front and back treated with EnduroShield
- › Compatible with AST-SLDK Sliding Shower Hardware kits

Sizes Available by SKU	
GW-B-SQ-SL-F-56	28" x 60"
GW-B-SQ-SL-F-60	30" x 60"
GW-B-SQ-SL-F-72	36" x 60"

BATH DOUBLE SLIDER DOOR



FEATURES

- › Purchase two of these Bath Double Slider Doors to fill 56" to 60" alcoves
- › Available in 60" or 66" panel height
- › Panel thickness 3/8" (10mm)
- › Premium ANSI certified tempered safety glass
- › Panel front and back treated with EnduroShield
- › Compatible with POL-SLDK73 Sliding Shower Hardware kits

Sizes Available by SKU	
B-2DSL60-60	31" x 60"
B-2DSL60-66	31" x 66"

BATH BRONZE TINTED
ROUND SLIDER DOOR



FEATURES

- › Pairs with corresponding Bath Bronze Tinted Round Slider Fixed Panel to fit alcoves from 56" to 60"
- › Panel height 59 3/4"
- › Panel thickness 3/8" (10mm)
- › Premium ANSI certified tempered safety glass
- › Panel front and back treated with EnduroShield
- › Compatible with ECL-SLDK Sliding Shower Hardware kits

Sizes Available by SKU	
B-Bronze-SL-D-60	31 1/2" x 59 3/4"

BATH BRONZE TINTED
ROUND SLIDER FIXED PANEL

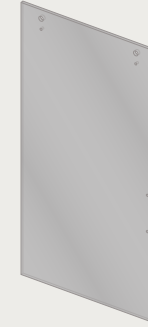


FEATURES

- › Pairs with corresponding Bath Bronze Tinted Round Slider Door to fit alcoves from 56" to 60"
- › Panel height 60"
- › Panel thickness 3/8" (10mm)
- › Premium ANSI certified tempered safety glass
- › Panel front and back treated with EnduroShield
- › Compatible with ECL-SLDK Sliding Shower Hardware kits

Sizes Available by SKU	
B-Bronze-SL-F-60	30" x 60"

BATH GREY TINTED
ROUND SLIDER DOOR



FEATURES

- › Pairs with corresponding Bath Grey Tinted Round Slider Fixed Panel to fit alcoves from 56" to 60"
- › Panel height 59 3/4"
- › Panel thickness 3/8" (10mm)
- › Premium ANSI certified tempered safety glass
- › Panel front and back treated with EnduroShield
- › Compatible with ECL-SLDK Sliding Shower Hardware kits

Sizes Available by SKU	
B-Grey-SL-D-60	31 1/2" x 59 3/4"

BATH GREY TINTED
ROUND SLIDER FIXED PANEL



FEATURES

- › Pairs with corresponding Bath Grey Tinted Round Slider Door to fit alcoves from 56" to 60"
- › Panel height 60"
- › Panel thickness 3/8" (10mm)
- › Premium ANSI certified tempered safety glass
- › Panel front and back treated with EnduroShield
- › Compatible with ECL-SLDK Sliding Shower Hardware kits

Sizes Available by SKU	
B-Grey-SL-F-60	30" x 60"

BATH FRENCH MONTURE
ROUND SLIDER DOOR



FEATURES

- › Pairs with corresponding Bath French Monture Round Slider Fixed Panel to fit 56" to 60" alcoves
- › Panel height 59 3/4"
- › Panel thickness 3/8" (10mm)
- › Premium ANSI certified tempered safety glass
- › Panel front and back treated with EnduroShield
- › Compatible with ECL-SLDK Sliding Shower Hardware kits
- › Available in Right and Left variations

Sizes Available by SKU	
GW-B-FSS-SL-D-60-L	31 1/2" x 59 3/4"
GW-B-FSS-SL-D-60-R	31 1/2" x 59 3/4"

BATH FRENCH MONTURE
ROUND SLIDER FIXED PANEL



FEATURES

- › Pairs with corresponding Bath French Monture Round Slider Door to fit 56" to 60" alcoves
- › Panel height 60"
- › Panel thickness 3/8" (10mm)
- › Premium ANSI certified tempered safety glass
- › Panel front and back treated with EnduroShield
- › Compatible with ECL-SLDK Sliding Shower Hardware kits
- › Works with Right and Left variations

Sizes Available by SKU	
GW-B-FSS-SL-F-60	30" x 60"

BATH FLUTED
ROUND SLIDER DOOR



FEATURES

- › Pairs with corresponding Bath Fluted Round Slider Fixed Panel to fit 56" to 60" alcoves
- › Panel height 59 3/4"
- › Panel thickness 3/8" (10mm)
- › Premium ANSI certified tempered safety glass
- › Panel front and back treated with EnduroShield
- › Compatible with ECL-SLDK Sliding Shower Hardware kits
- › Available in Right and Left variations

Sizes Available by SKU	
B-FL-SL-D-60-L	31 1/2" x 59 3/4"
B-FL-SL-D-60-R	31 1/2" x 59 3/4"

BATH FLUTED
ROUND SLIDER FIXED PANEL



FEATURES

- › Pairs with corresponding Bath Fluted Round Slider Door to fit 56" to 60" alcoves
- › Panel height 60"
- › Panel thickness 3/8" (10mm)
- › Premium ANSI certified tempered safety glass
- › Panel front and back treated with EnduroShield
- › Compatible with ECL-SLDK Sliding Shower Hardware kits
- › Works with Right and Left variations

Sizes Available by SKU	
B-FL-SL-F-60	30" x 60"

