



Kwikset



DORIAN[®] LEVER

A clean, streamlined design, Dorian fits a whole range of decorating styles beautifully, from traditional to contemporary.

- Featuring SmartKey Security™
- ANSI/BHMA Grade 3 Certified Security
- ADA Compliant



Dorian[®] Lever
in Polished Chrome

#1 SELLING U.S. LOCK BRAND*

*Source: TraQline US quarterly brand unit share report, Q4 2006 through Q1 2018

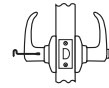
Specifications

| | |
|-----------------------|---|
| Door Prep | Cross Bore 2-1/8". Edge bore 1". |
| Backset | Adjustable 2-3/8" or 2-3/4". UL functions 2-3/4" standard or 2-3/8" optional. |
| Door Thickness | 1-3/8" - 1-3/4" Doors standard. |
| Cylinder | SmartKey Security™ or Traditional 5-pin Pin & Tumbler |
| Faceplates | 1" x 2-1/4" Specify round corner or square corner. Also available as drive-in latch. |
| Strikes | 2-1/4" Full lip standard. Specify round corner, square corner. Other options available. |
| Bolt | 1/2" Throw |
| ANSI/BHMA | A156.2 Grade 3 (all functions except 488) |
| ADA | 200 function satisfies section 4.13.9 ADA requirements. |
| UL | Meets 3-hour fire rating for all UL specific functions. |

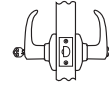
Functions



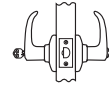
Passage/Hall/Closet: Both levers always free



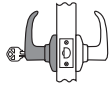
Privacy/Bed/Bath: Both levers locked or unlocked by turnbutton inside. Outside lever unlocked by emergency key



Keyed Entry Lever: Both sides locked or unlocked by key outside or turnbutton inside



Free Interior: Outside locked or unlocked by key outside or turn button inside. Inside always free.

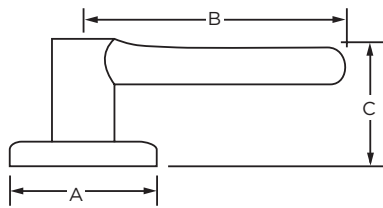


Storeroom/Vestibule: Outside unlocked only while key is turned. Inside always free



Half Dummy Trim, Surface Mounted: For doors where only a pull is required. No operation

Dimensions



| Design | A | B | C | C (Keyed) |
|---------|--------|--------|--------|-----------|
| Dorian® | 2 5/8" | 3 3/4" | 2 1/8" | 2 11/16" |



Dorian® Lever
in Satin Nickel



Dorian® Lever
in Venetian Bronze

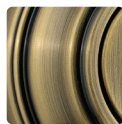
LIFETIME WARRANTY

Finishes

MICROBAN



Polished
Brass 3



Antique
Brass 5



Venetian
Bronze 11P



Satin
Nickel 15



Antique
Nickel 15A



Polished
Chrome 26



Satin
Chrome 26D

Kwikset

19701 DaVinci, Lake Forest, CA 92610 • Kwikset.com • 1-800-327-5625

© 2018 Spectrum Brands, Inc. Kwikset is a trademark of Spectrum Brands, Inc. Lake Forest, CA 92610 • 267433-4/18