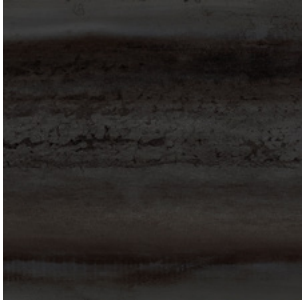


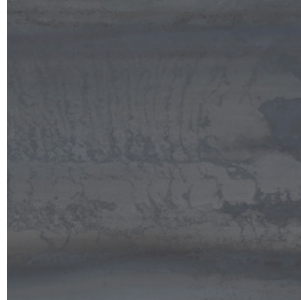
Remington

CERAMIC MATERIALS THAT OFFER LASTING DURABILITY AND REFLECT NATURAL AND AMBIENT LIGHT WITH THEIR DRAMATIC SHEEN.

Colors



Black



Dark Gray



Emerald



Light Gray



Moonstone



Onyx



Opal



Sapphire



White

Sizes



47" x 109"
Rectified



35" x 35"
Rectified



24" x 47"
Rectified



12" x 24"
Rectified



2" x 9"

Field Tiles*

SIZE	THICKNESS	FINISH
47" x 109" Rectified	6.5 mm	Matte
35" x 35" Rectified	9.5 mm	Matte
24" x 47" Metal 3D Decorative Rectified	9.5 mm	Matte
24" x 47" Rectified	9.5 mm	Matte
12" x 24" Metal 3D Decorative Rectified	9.5 mm	Matte
12" x 24" Rectified	9.5 mm	Matte
2" x 9"		Glossy

Mosaics & Coordinating Trims*

SIZE	THICKNESS	FINISH
13" x 47" Left Corner Rectified		Matte
13" x 47" Right Corner Rectified		Matte
13" x 47" Stair Tread Rectified		Matte
13" x 47" Step Rectified		Matte
2" x 2" Mosaic		Matte
2" x 9" Bullnose		Glossy
3" x 24" Bullnose Rectified		Matte

Product Characteristics

Breaking Strength (ASTM C648 or ISO 10545-4)	Range of ≥ 700 N to ≥ 2000 N
Chemical Resistance (ASTM C650 or ISO 10545-13)	Not Resistant
DCOF	≥ 0.42
Deep Scratch Resistance - Unglazed (ISO 10545-6)	Not Resistant
Frost Resistance (ASTM C1026 or ISO 10545-12)	Resistant
Mohs Hardness - EN101	Not Applicable
Water Absorption (ASTM C373 or ISO 10545-3)	$\leq 0.5\%$
Certifications	Greenguard
Country of Origin	Italy
Shade Variation Code	v3

*Not all sizes/trims are available in all colors and finishes

PUSH THE ENVELOPE OF MODERN DESIGN WITH THE REMINGTON COLLECTION. MADE WITH CERAMIC MATERIALS THAT OFFER LASTING DURABILITY, THIS COMMERCIAL TILE REFLECTS NATURAL AND AMBIENT LIGHT WITH ITS DRAMATIC SHEEN.

Request samples.

www.vitlsurfaces.com
samples@vitlsurfaces.com

