

**3G PLATE /  
WITHOUT LOGO**

---

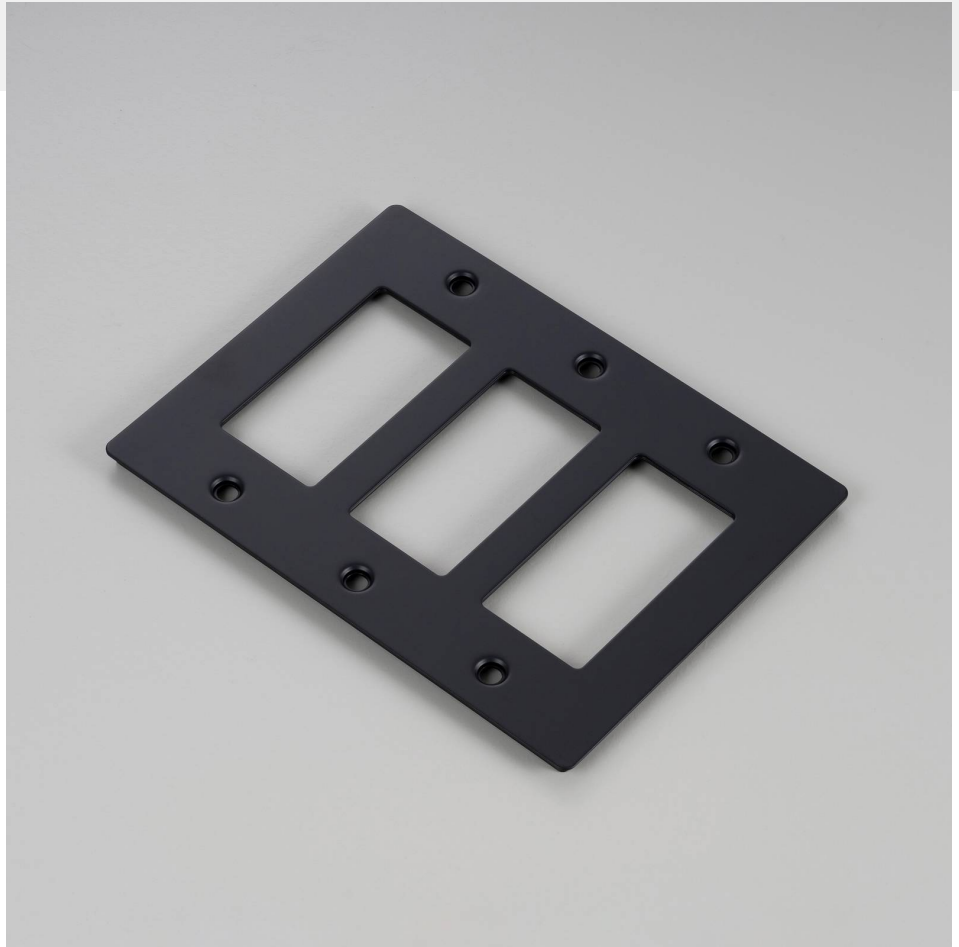
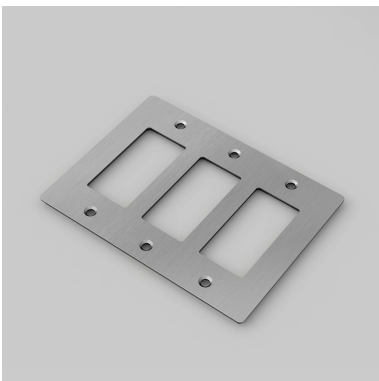
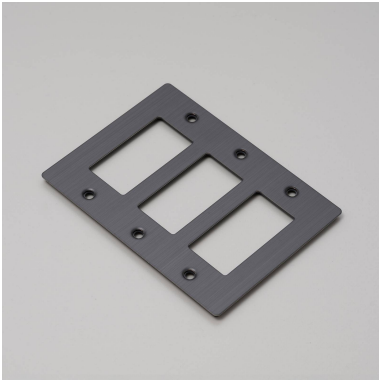
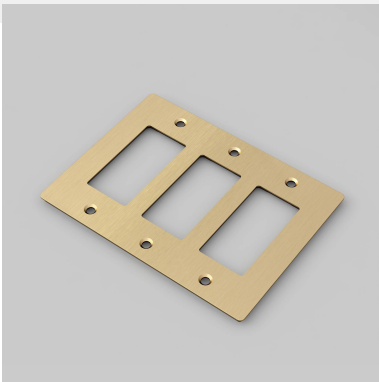
**ACTION: ELECTRICITY WALL PLATE**

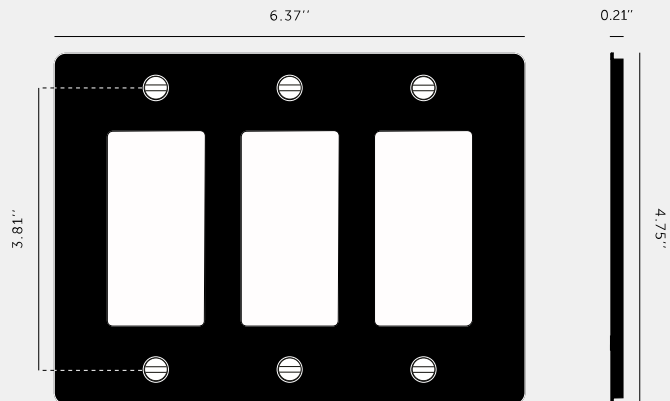
---

**RANGE: WALL PLATES**

---

Decorative cover plate sets in a variety of quality finishes, complete with flush fitting infills. Designed to be completed with range of module inserts to suit a broad spectrum of requirements for lighting control, power supply and device charging. Always finish with our signature details kit & coin screws.






---

#### SPECIFICATIONS

---

Our Metal Electricity range has solid stainless steel plates, in our signature white, steel, brass, smoked bronze and black finishes.

Style: 3G metal plate + infills.

For use with class 1 modules only / Must be grounded.

Recommended Electrical Back Box:

Standard 3G electrical box. See dimensions of chosen modules for required back box depth. Box must be flush mounted.

This piece features a 1/8" (4mm) shadow gap when installed.

---

#### INCLUDED

---

1 x 3G Wall Plate  
 3 x Toggle Infills  
 3 x Dimmer Infills  
 6 x Plate Fixing Screws

---

#### FINISH & SKU NUMBERS

---

sku:	finish:	size:
NPL-023587	● black	3G
NPL-053588	● brass	3G
NPL-093589	● smoked bronze	3G
NPL-073590	● steel	3G
NPL-143591	● white	3G

---

#### PLEASE NOTE

---

DISCLAIMER: Always consult a trade professional when installing this product. Buster + Punch is not responsible for the usage or feasibility of installation requirements. This product is not suitable for damp or wet environments.

---

#### CARE INSTRUCTIONS

---

Wipe with a dry lint free cloth with no loose hairs, avoid using any chemicals. Please note that finishes may age naturally with time and regular use.