



SharkBite™

Frost Free Sillcocks

SharkBite Max™ frost free sillcocks are outdoor hose faucets for use in residential or commercial applications.

Features and Benefits

- Instant push-fit connection for increased ease-of use:
 - No soldering, clamps, unions, or glue required
- Back-flow protection:
 - Integrated anti-siphon vacuum breaker
- Freeze resistant:
 - Automatic drain feature
- Integral tube liner for PEX installations:
 - Means no loose components and ensures a secure, reliable connection

Specification Data

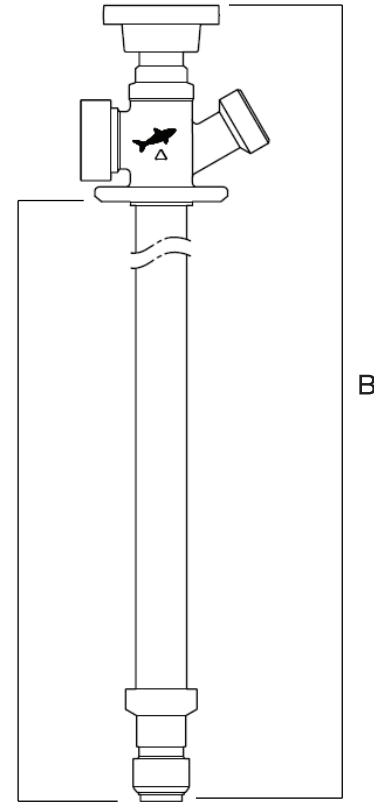
Materials	
Tube	Chrome Plated Lead Free DZR Brass
Body	Chrome Plated Lead Free DZR Brass
O-Ring	EPDM
Grab Ring	Stainless Steel Grade 316
Tube Support Liner	Veradel
Fitting	DZR Lead Free Brass
Washer	EPDM
Screw	SST
Stem Tube	DZR Lead Free Brass
Joint Sleeve	DZR Lead Free Brass
Washer	SST

Compatible Pipes

Frost free sillcocks are approved for use ASTM F876/CSA B137.5 PEX, ASTM B88 Type K, L and M and copper, ASTM D2846/CSA B137.6 CPVC, and ASTM F2769 PE-RT

Certifications & Listings

ASSE 1019, ANSI/NSF 61, ASI/NSF 372



Pipe Size (for all part numbers) 1/2 in. x 3/4 in. MHT

Dimensions (inches)			
Part #	Length (A)	Length (B)	Replacement Stem #
25743LF	4 in.	7 in.	25773
25744LF	6 in.	9 in.	25774
24628LF	8 in.	11 in.	25751
24629LF	10 in.	13 in.	25752
24636LF	12 in.	15 in.	25753
24637LF	15 in.	18 in.	25754
24638LF	18 in.	21 in.	25755

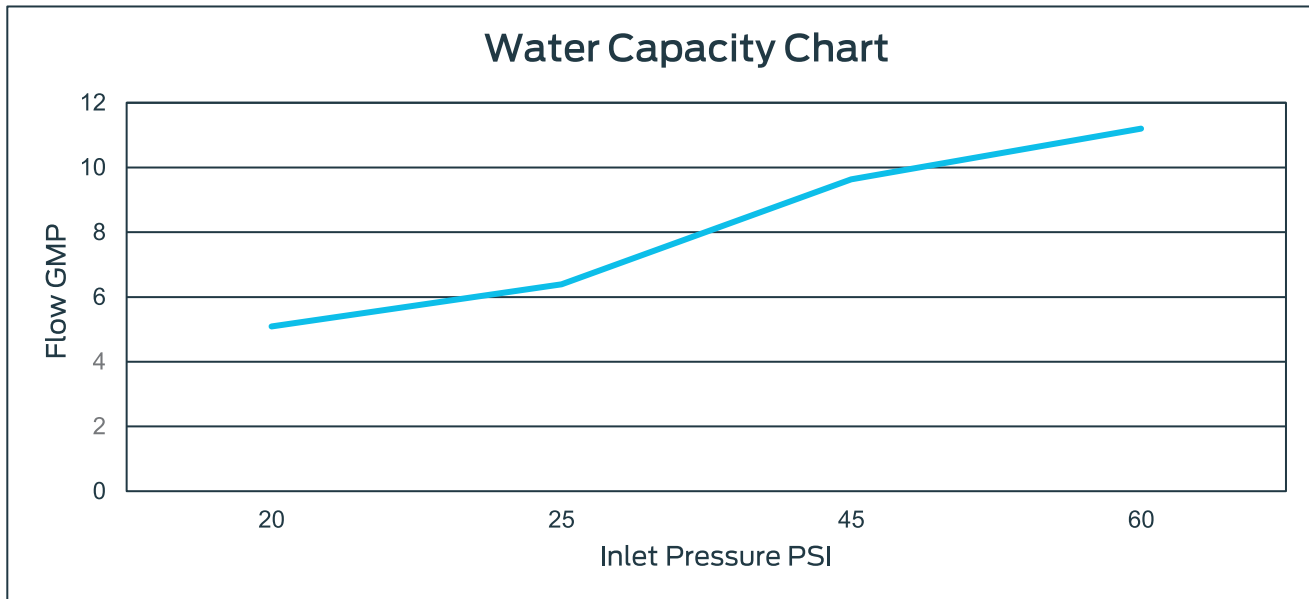
Product Submittal	
Name	
Date	
Architect/Owner	
Contractor	
Tag	
Notes	



Performance Data

Pressure and Temperature Performance:

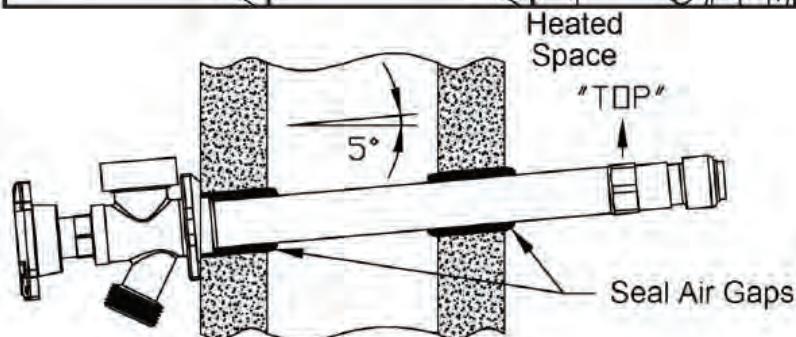
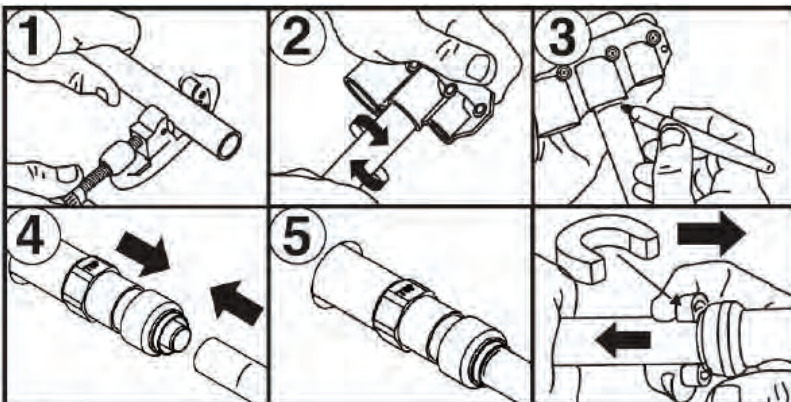
- Max working pressure 125 psi
- Max working temperature 180 °F
- Min working temperature 33 °F



Material

Hose bibbs are approved for potable water and glycol (up to 100 mix)

Typical Installation



- Cut pipe squarely
- Deburr and clean pipe
- Mark pipe to insertion depth
- Insert pipe into frost free sillcock to depth mark
- Feed frost free sillcock and pipe through the wall and connect to plumbing system
- Use disconnect clip to remove if needed
- Seal all air gaps and install valve at a 5° angle

Specification

The tube shall be inserted into the SharkBite™ push-to-connect (PTC) fitting in the first stage through a release collar and then through a stainless steel grab ring. The grab ring has teeth that open out and grip onto the tube. At the second stage the tube shall be pushed through an O-ring protector which aligns the tube. A specially formulated EPDM O-ring shall be compressed between the wall of the fitting and the tube before the end of the tube reaches the tube stop. Only when the tube has passed through the O-ring and reaches the tube stop. Only when the tube has passed through the O-ring and reached the tube stop shall a secure joint be created. The fitting shall be a SharkBite PTC fitting.

You must still disconnect any hose when winterizing the frost free sillcock.

New install: Drill a 1-1/8 inch diameter hole in the wall. This size will accommodate the diameter of the sillcock and provide enough clearance for the 5-degree pitch required for proper drainage.