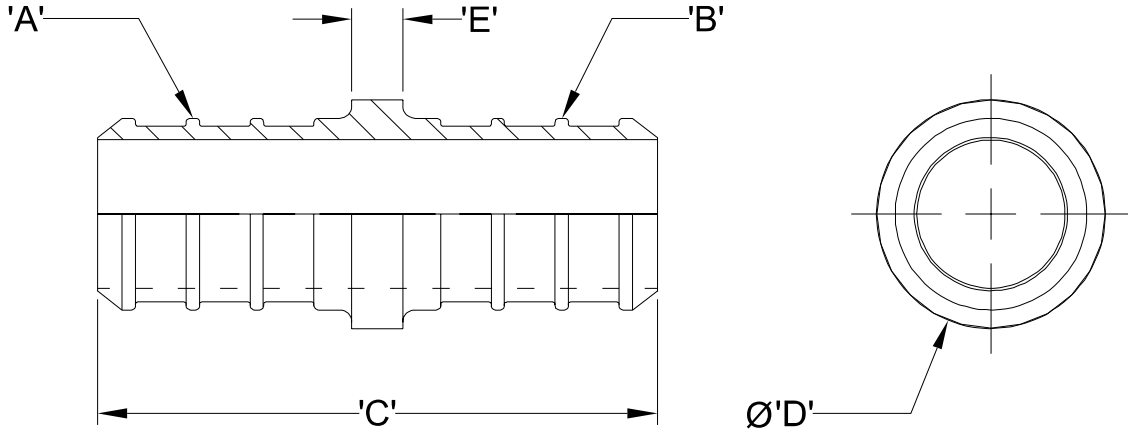




Zurn PEX® XL-Low Lead Brass Barb Coupling - QQC_GX Specification Sheet

Tag _____

Dimensional Data: Inches and [mm] are subject to manufacturing tolerances and change without notice.



NOTE: Barb geometry will vary depending upon barb size.

Part Number	Description	'A'	'B'	'C'	'D'	'E'
QQC22GX	3/8" Barb x 3/8" Barb Coupling	3/8" Barb	3/8" Barb	1.38" [35.0]	0.44" [11.1]	.013" [3.2]
QQC32GX	1/2" Barb x 3/8" Barb Coupling	1/2" Barb	3/8" Barb	1.38" [35.0]	0.56" [14.3]	.013" [3.2]
QQC33GX	1/2" Barb x 1/2" Barb Coupling	1/2" Barb	1/2" Barb	1.38" [35.0]	0.56" [14.3]	.013" [3.2]
QQC43GX	3/4" Barb x 1/2" Barb Coupling	3/4" Barb	1/2" Barb	1.38" [35.0]	0.81" [20.6]	.013" [3.2]
QQC44GX	3/4" Barb x 3/4" Barb Coupling	3/4" Barb	3/4" Barb	1.38" [35.0]	0.81" [20.6]	.013" [3.2]
QQC54GX	1" Barb x 3/4" Barb Coupling	1" Barb	3/4" Barb	1.55" [39.2]	1.00" [25.4]	.013" [3.2]
QQC55GX	1" Barb x 1" Barb Coupling	1" Barb	1" Barb	1.72" [43.6]	1.00" [25.4]	.013" [3.2]
QQC65GX	1-1/4" Barb x 1" Barb Coupling	1-1/4" Barb	1" Barb	2.20" [51.6]	1.12" [28.4]	0.25" [6.4]
QQC66GX	1-1/4" Barb x 1-1/4" Barb Coupling	1-1/4" Barb	1-1/4" Barb	2.55" [64.8]	1.12" [28.4]	0.25" [6.4]
QQC76GX	1-1/2" Barb x 1-1/4" Barb Coupling	1-1/2" Barb	1-1/4" Barb	2.55" [64.8]	1.30" [33.0]	0.25" [6.4]
QQC77GX	1-1/2" Barb x 1-1/2" Barb Coupling	1-1/2" Barb	1-1/2" Barb	2.55" [64.8]	1.30" [33.0]	0.25" [6.4]
QQC87GX	2" Barb x 1-1/2" Barb Coupling	2" Barb	1-1/2" Barb	3.02" [76.7]	1.68" [42.7]	0.37" [9.4]
QQC88GX	2" Barb x 2" Barb Coupling	2" Barb	2" Barb	3.37" [85.6]	1.68" [42.7]	0.37" [9.4]

Engineering Specification: Zurn PEX® XL-Low Lead Brass Barb Coupling. The QQC_GX is used to connect two separate pieces of PEX tubing. Manufactured from EcoBrass®, C69300. These fittings, as a system with Zurn PEX® tube, are pressure rated at 160 PSI at 73°F, 100 PSI at 180°F, and 80 PSI at 200°F. These fittings are listed by NSF as complying with the following standards: NSF/ANSI Standard 14, NSF/ANSI Standard 61 including Annex G, ASTM F877, CSA B137.5, and ASTM F1807.

Accessories

- ___ QCLP2X 3/8" QuickClamp® Crimp Ring
- ___ QCLP3X 1/2" QuickClamp® Crimp Ring
- ___ QCLP4X 3/4" QuickClamp® Crimp Ring
- ___ QCLP5X 1" QuickClamp® Crimp Ring
- ___ QCR2X 3/8" Copper Crimp Ring
- ___ QCR3X 1/2" Copper Crimp Ring
- ___ QCR4X 3/4" Copper Crimp Ring
- ___ QCR5X 1" Copper Crimp Ring
- ___ QCR6X 1-1/4" Copper Crimp Ring
- ___ QCR7X 1-1/2" Copper Crimp Ring
- ___ QCR8X 2" Copper Crimp Ring
- ___ QSOET2X 3/8" Stainless Steel Crimp Ring
- ___ QSOET3X 1/2" Stainless Steel Crimp Ring
- ___ QSOET4X 3/4" Stainless Steel Crimp Ring
- ___ QSOET5X 1" Stainless Steel Crimp Ring

Rev.	Date: 2/22/10	C.N. No. 110727
Dwg. No. 84481		Prod. No. QQC_GX