



Assembly & Installation Instructions

CAUTION: Read instructions carefully and turn electricity off at main circuit breaker panel before beginning installation.

4458, 4459, 4758

WARNING - If any Special Control Devices are used with this Fixture, Follow the Instructions Carefully to assure full compliance with N.E.C. requirements. If there are any questions, contact a Qualified Electrical Contractor.

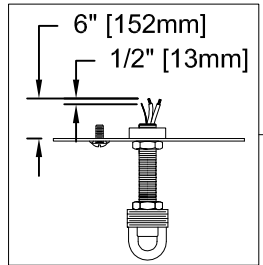
WARNING - This product contains chemicals known to the State of California to cause cancer, birth defects and /or other reproductive harm. Thoroughly wash hands after installing, handling, cleaning, or otherwise touching this product.
CAUTION - All glass is fragile, use care when handling Glass component(s) and or Lamp(s).

ASSEMBLY STEPS:
PASOS PARA ENSAMBLAR:
MODE D'ASSEMBLAGE:

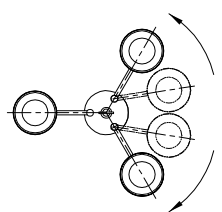
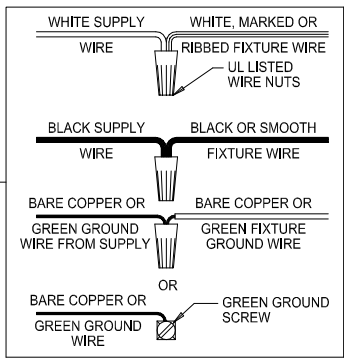
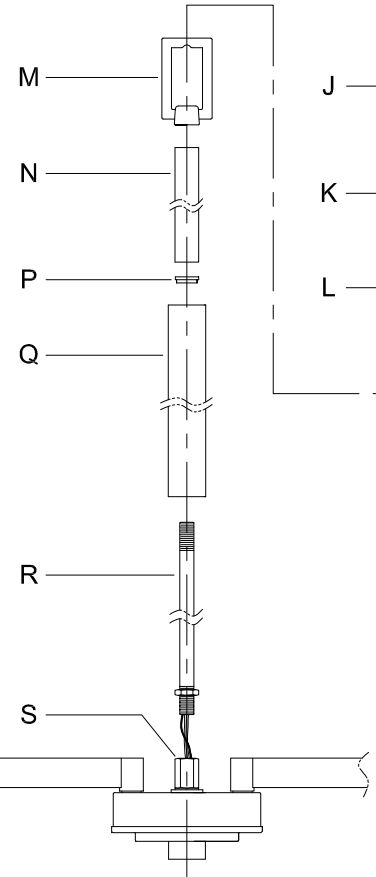
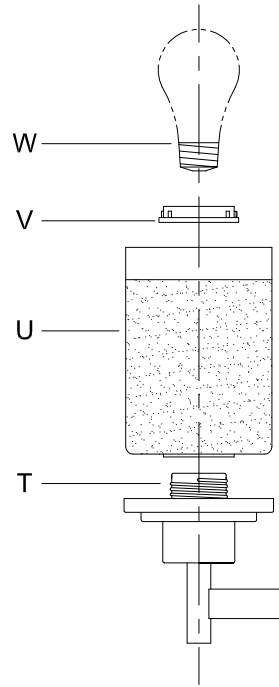
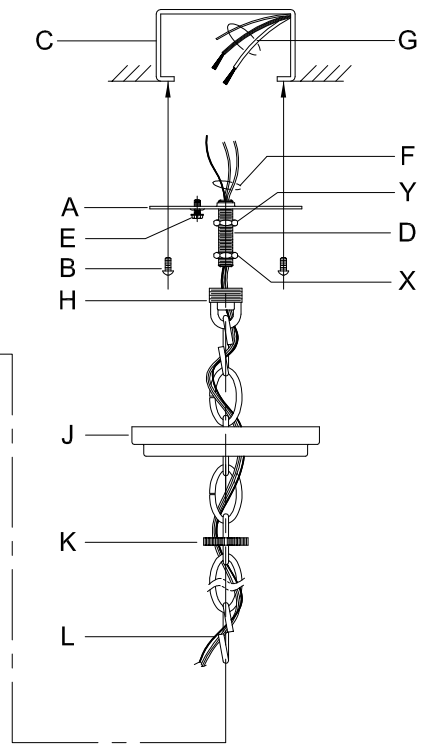
1. D,E → A
2. B,A → C
3. Y,X,H → D
4. X → H
5. F → R,Q,P,N,M
6. R → S
7. Q,P,N,M → R
8. L → M
9. K,J → L
10. L → H
11. F → L,K,J,H,D
12. F → G
13. J,K → H
14. U,V → T
15. W → T

(TO LOCK)
 (APRETAR)
 (À VERROUILLER)

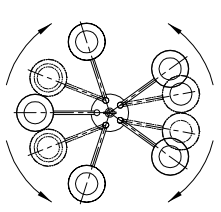
B, C, G & W
 (NOT FURNISHED)
 (NO INCLUIDA)
 (NON FOURNIE)



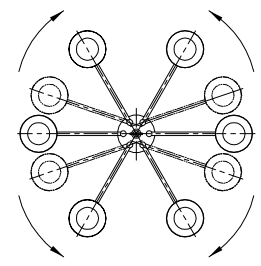
ADJUST HEIGHT WITH "D"
 Y → A (TO LOCK)
 AJUSTA LA ALTURA CON "D"
 Y → A (APRETAR)
 RÉGLEZ LA HAUTEUR AVEC "D"
 Y → A (À VERROUILLER)



P4458



P4459



P4758