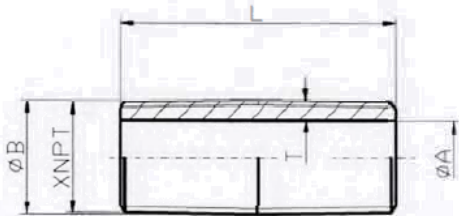


# Schedule 40 Welded Steel Pipe Nipples Black and Galvanized

## Specification Sheet

### FEATURES:

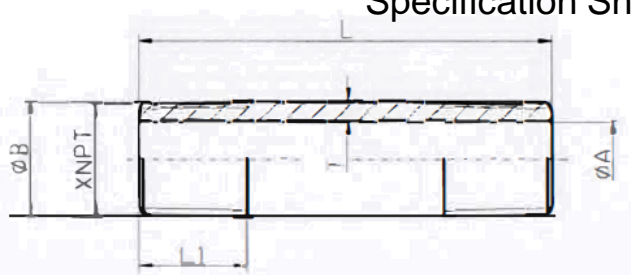
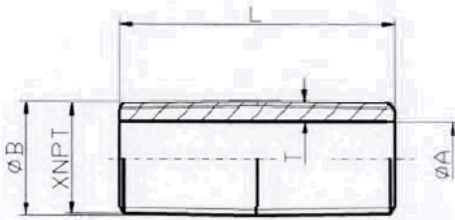
Material: ASTM A53/A53M, ERW type, Grade B  
 Dimensions: ASTM A733  
 Threads: ASME B1.20.1  
 Approvals: NSF61, NSF372 (Galvanized Only)  
 Availability: Stocked from 1/8" through 8" diameters



Part #	Size	A	B	L	L1	T (min)
ZNB00CL	1/8XCLOSE	0.269	0.405	3/4	----	0.060
ZNB00112	1/8X1-1/2	0.269	0.405	1-1/2	0.392	0.060
ZNB002	1/8X2	0.269	0.405	2	0.392	0.060
ZNB00212	1/8X2-1/2	0.269	0.405	2-1/2	0.392	0.060
ZNB003	1/8X3	0.269	0.405	3	0.392	0.060
ZNB00312	1/8X3-1/2	0.269	0.405	3-1/2	0.392	0.060
ZNB004	1/8X4	0.269	0.405	4	0.392	0.060
ZNB00412	1/8X4-1/2	0.269	0.405	4-1/2	0.392	0.060
ZNB005	1/8X5	0.269	0.405	5	0.392	0.060
ZNB00512	1/8X5-1/2	0.269	0.405	5-1/2	0.392	0.060
ZNB006	1/8X6	0.269	0.405	6	0.392	0.060
ZNB007	1/8X7	0.269	0.405	7	0.392	0.060
ZNB008	1/8X8	0.269	0.405	8	0.392	0.060
ZNB009	1/8X9	0.269	0.405	9	0.392	0.060
ZNB0010	1/8X10	0.269	0.405	10	0.392	0.060
ZNB0012	1/8X12	0.269	0.405	12	0.392	0.060
ZNB01CL	1/4XCLOSE	0.364	0.540	7/8	----	0.077
ZNB01112	1/4X1-1/2	0.364	0.540	1-1/2	0.595	0.077
ZNB012	1/4X2	0.364	0.540	2	0.595	0.077
ZNB01212	1/4X2-1/2	0.364	0.540	2-1/2	0.595	0.077
ZNB013	1/4X3	0.364	0.540	3	0.595	0.077
ZNB01312	1/4X3-1/2	0.364	0.540	3-1/2	0.595	0.077
ZNB014	1/4X4	0.364	0.540	4	0.595	0.077
ZNB01412	1/4X4-1/2	0.364	0.540	4-1/2	0.595	0.077
ZNB015	1/4X5	0.364	0.540	5	0.595	0.077
ZNB01512	1/4X5-1/2	0.364	0.540	5-1/2	0.595	0.077
ZNB016	1/4X6	0.364	0.540	6	0.595	0.077
ZNB01612	1/4X6-1/2	0.364	0.540	6-1/2	0.595	0.077
ZNB017	1/4X7	0.364	0.540	7	0.595	0.077
ZNB018	1/4X8	0.364	0.540	8	0.595	0.077

Part #	Size	A	B	L	L1	T (min)
ZNB019	1/4X9	0.364	0.540	9	0.595	0.077
ZNB0110	1/4X10	0.364	0.540	10	0.595	0.077
ZNB0111	1/4X11	0.364	0.540	11	0.595	0.077
ZNB0112	1/4X12	0.364	0.540	12	0.595	0.077
ZNB02CL	3/8XCLOSE	0.493	0.675	1	----	0.080
ZNB02112	3/8X1-1/2	0.493	0.675	1-1/2	0.601	0.080
ZNB022	3/8X2	0.493	0.675	2	0.601	0.080
ZNB02212	3/8X2-1/2	0.493	0.675	2-1/2	0.601	0.080
ZNB023	3/8X3	0.493	0.675	3	0.601	0.080
ZNB02312	3/8X3-1/2	0.493	0.675	3-1/2	0.601	0.080
ZNB024	3/8X4	0.493	0.675	4	0.601	0.080
ZNB02412	3/8X4-1/2	0.493	0.675	4-1/2	0.601	0.080
ZNB025	3/8X5	0.493	0.675	5	0.601	0.080
ZNB02512	3/8X5-1/2	0.493	0.675	5-1/2	0.601	0.080
ZNB026	3/8X6	0.493	0.675	6	0.601	0.080
ZNB02612	3/8X6-1/2	0.493	0.675	6-1/2	0.601	0.080
ZNB027	3/8X7	0.493	0.675	7	0.601	0.080
ZNB028	3/8X8	0.493	0.675	8	0.601	0.080
ZNB029	3/8X9	0.493	0.675	9	0.601	0.080
ZNB0210	3/8X10	0.493	0.675	10	0.601	0.080
ZNB0211	3/8X11	0.493	0.675	11	0.601	0.080
ZNB0212	3/8X12	0.493	0.675	12	0.601	0.080
ZNB03CL	1/2XCLOSE	0.622	0.840	1-1/8	----	0.095
ZNB03112	1/2X1-1/2	0.622	0.840	1-1/2	0.669	0.095
ZNB03114	1/2X1-1/4	0.622	0.840	1-1/4	0.782	0.095
ZNB03134	1/2X1-3/4	0.622	0.840	1-3/4	0.782	0.095
ZNB032	1/2X2	0.622	0.840	2	0.782	0.095
ZNB03212	1/2X2-1/2	0.622	0.840	2-1/2	0.782	0.095
ZNB033	1/2X3	0.622	0.840	3	0.782	0.095
ZNB03312	1/2X3-1/2	0.622	0.840	3-1/2	0.782	0.095

# Schedule 40 Welded Steel Pipe Nipples Black and Galvanized Specification Sheet



Part #	Size	A	B	L	L1	T (min)
ZNB034	1/2X4	0.622	0.840	4	0.782	0.095
ZNB03412	1/2X4	0.622	0.840	4-1/2	0.782	0.095
ZNB035	1/2X5	0.622	0.840	5	0.782	0.095
ZNB03512	1/2X5-1/2	0.622	0.840	5-1/2	0.782	0.095
ZNB036	1/2X6	0.622	0.840	6	0.782	0.095
ZNB03612	1/2X6-1/2	0.622	0.840	6-1/2	0.782	0.095
ZNB037	1/2X7	0.622	0.840	7	0.782	0.095
ZNB038	1/2X8	0.622	0.840	8	0.782	0.095
ZNB03812	1/2X8-1/2	0.622	0.840	8-1/2	0.782	0.095
ZNB039	1/2X9	0.622	0.840	9	0.782	0.095
ZNB03912	1/2X9-1/2	0.622	0.840	9-1/2	0.782	0.095
ZNB0310	1/2X10	0.622	0.840	10	0.782	0.095
ZNB031012	1/2X10-1/2	0.622	0.840	10-1/2	0.782	0.095
ZNB0311	1/2X11	0.622	0.840	11	0.782	0.095
ZNB031112	1/2X11-1/2	0.622	0.840	11-1/2	0.782	0.095
ZNB0312	1/2X12	0.622	0.840	12	0.782	0.095
ZNB04CL	3/4XCLOSE	0.824	1.050	1-3/8	----	0.099
ZNB041	3/4X1	0.824	1.050	1	0.794	0.099
ZNB04112	3/4X1-1/2	0.824	1.050	1-1/2	0.669	0.099
ZNB042	3/4X2	0.824	1.050	2	0.794	0.099
ZNB04212	3/4X2-1/2	0.824	1.050	2-1/2	0.794	0.099
ZNB043	3/4X3	0.824	1.050	3	0.794	0.099
ZNB04312	3/4X3-1/2	0.824	1.050	3-1/2	0.794	0.099
ZNB044	3/4X4	0.824	1.050	4	0.794	0.099
ZNB04412	3/4X4-1/2	0.824	1.050	4-1/2	0.794	0.099
ZNB045	3/4X5	0.824	1.050	5	0.794	0.099
ZNB04512	3/4X5-1/2	0.824	1.050	5-1/2	0.794	0.099
ZNB046	3/4X6	0.824	1.050	6	0.794	0.099
ZNB04612	3/4X6-1/2	0.824	1.050	6-1/2	0.794	0.099
ZNB047	3/4X7	0.824	1.050	7	0.794	0.099
ZNB04712	3/4X7-1/2	0.824	1.050	7-1/2	0.794	0.099
ZNB048	3/4X8	0.824	1.050	8	0.794	0.099
ZNB049	3/4X9	0.824	1.050	9	0.794	0.099
ZNB04912	3/4X9-1/2	0.824	1.050	9-1/2	0.794	0.099
ZNB0410	3/4X10	0.824	1.050	10	0.794	0.099
ZNB0411	3/4X11	0.824	1.050	11	0.794	0.099
ZNB0412	3/4X12	0.824	1.050	12	0.794	0.099

Part #	Size	A	B	L	L1	T (min)
ZNB05CL	1XCLOSE	1.049	1.315	1-1/2	----	0.116
ZNB05134	1X1-3/4	1.049	1.315	1-3/4	0.985	0.116
ZNB052	1X2	1.049	1.315	2	0.906	0.116
ZNB05212	1X2-1/2	1.049	1.315	2-1/2	0.985	0.116
ZNB053	1X3	1.049	1.315	3	0.985	0.116
ZNB05312	1X3-1/2	1.049	1.315	3-1/2	0.985	0.116
ZNB054	1X4	1.049	1.315	4	0.985	0.116
ZNB05412	1X4-1/2	1.049	1.315	4-1/2	0.985	0.116
ZNB055	1X5	1.049	1.315	5	0.985	0.116
ZNB05512	1X5-1/2	1.049	1.315	5-1/2	0.985	0.116
ZNB056	1X6	1.049	1.315	6	0.985	0.116
ZNB05612	1X6-1/2	1.049	1.315	6-1/2	0.985	0.116
ZNB057	1X7	1.049	1.315	7	0.985	0.116
ZNB05712	1X7-1/2	1.049	1.315	7-1/2	0.985	0.116
ZNB058	1X8	1.049	1.315	8	0.985	0.116
ZNB05812	1X8-1/2	1.049	1.315	8-1/2	0.985	0.116
ZNB059	1X9	1.049	1.315	9	0.985	0.116
ZNB05912	1X9-1/2	1.049	1.315	9-1/2	0.985	0.116
ZNB0510	1X10	1.049	1.315	10	0.985	0.116
ZNB0511	1X11	1.049	1.315	11	0.985	0.116
ZNB0512	1X12	1.049	1.315	12	0.985	0.116
ZNB06CL	11/4XCLOSE	1.380	1.660	1-5/8	----	0.123
ZNB062	11/4X2	1.380	1.660	2	0.906	0.123
ZNB06212	11/4X2-1/2	1.380	1.660	2-1/2	1.009	0.123
ZNB063	11/4X3	1.380	1.660	3	1.009	0.123
ZNB06312	11/4X3-1/2	1.380	1.660	3-1/2	1.009	0.123
ZNB06334	11/4X3-3/4	1.380	1.660	3-3/4	1.009	0.123
ZNB064	11/4X4	1.380	1.660	4	1.009	0.123
ZNB06412	11/4X4-1/2	1.380	1.660	4-1/2	1.009	0.123
ZNB065	11/4X5	1.380	1.660	5	1.009	0.123
ZNB06512	11/4X5-1/2	1.380	1.660	5-1/2	1.009	0.123
ZNB066	11/4X6	1.380	1.660	6	1.009	0.123
ZNB06612	11/4X6-1/2	1.380	1.660	6-1/2	1.009	0.123
ZNB067	11/4X7	1.380	1.660	7	1.009	0.123
ZNB06712	11/4X7-1/2	1.380	1.660	7-1/2	1.009	0.123
ZNB068	11/4X8	1.380	1.660	8	1.009	0.123
ZNB06812	11/4X8-1/2	1.380	1.660	8-1/2	1.009	0.123