

Wired Controller Kit Includes:



Tunable-White Series
Tape Lighting
L-T600-16-MW



Tunable-White Series
Wired Controller
T-TIL-96



60 Watt Plug-In
Power Supply
T-60W-12V-PI



(12) Tape Light to
Wire Connectors
L-8MM-EZ6PK-W



20 Gauge
Stranded Wire
T-CW20G-STR-25

Overview of Tunable-White Wired Controller Hookup Diagram

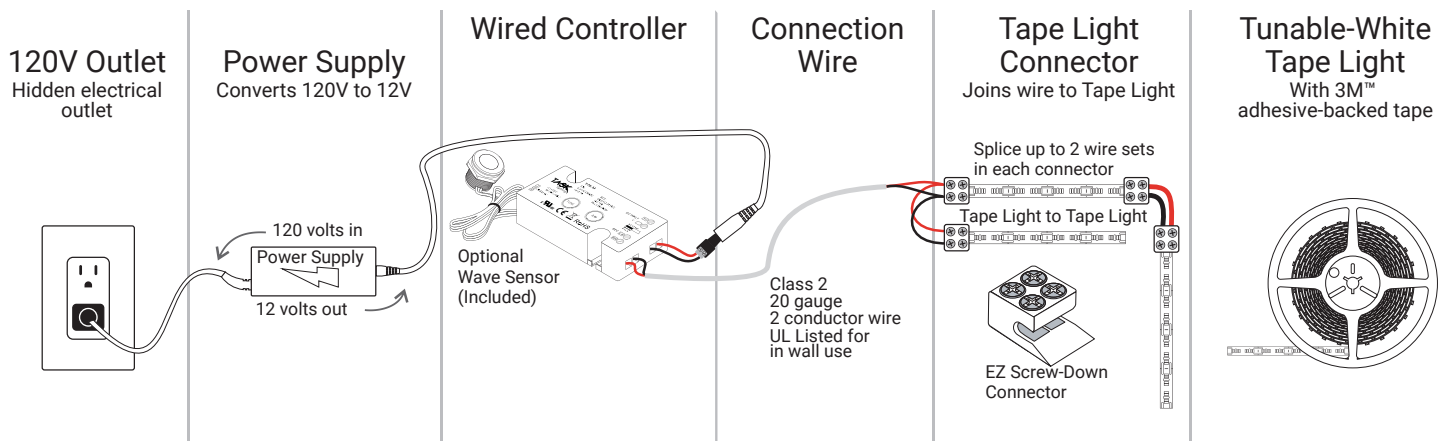
Step 1. Connect Power Supply to Wired Controller



Step 2. Connect Wired Controller to Tape Light



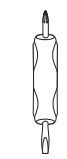
Step 3. Tune the white color temperature of lights



Tools Needed



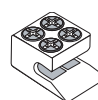
Wire Strippers



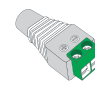
Multi-bit
Screwdriver
(Included)

#1 Phillips Mini Flat Head
#2 Phillips Flat Head
Included screwdriver bits

Product Legend



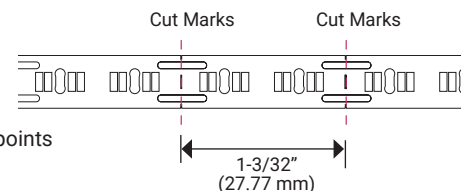
EZ Screw-Down
Tape-to-Wire Connector
L-EZV2-6PK-WT



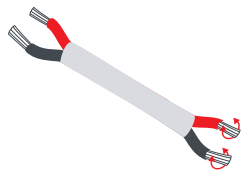
Female Barrel
Connector
T-FBC

NOTE

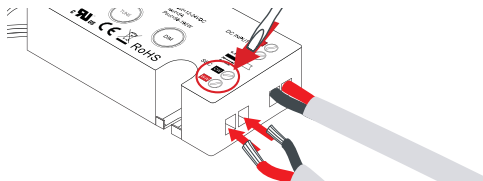
- **DO NOT** connect low-voltage LED tape light to high-voltage power.
- Do not over tighten any screws.
- Maintain polarity on all connections, Red to (WW+) and Black to (CW-).
- Maximum 32.8 feet of Tape Light can be connected together.
- For shorter lengths of Tape Light, cut with scissors at cut marks where a black line runs through 2 solder points
– **CUT AT DESIGNATED CUT LINES ONLY**



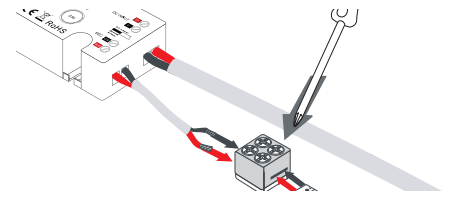
Step 1. Connect Wired Controller to Tunable-White Tape Light



1. Cut a length of connection wire to run from Wired Controller to Multi-White Tunable Light location. Strip 1/4" insulation from both ends of wire, twist each wire, and fold stripped wires in half.



2. Use a flathead screwdriver to loosen the (WW) and (CW) terminals. Insert Red wire into (WW) terminal and Black wire into (CW) terminal, ensuring wire is fully inserted into terminals; tighten screws.

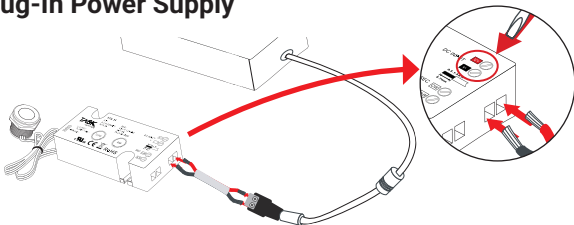


3. Use #1 Phillips to loosen the 4 terminal screws on 8MM-EZ Connector. Peel 1/2" of the adhesive protector from back of LED tape light, and scrape waterproof coating, insert into connector, evenly tighten screws. Insert wires from Wired Controller into terminals, Red wire to (+ or WW) side of tape, Black wire to (- or CW) side of tape; tighten screws.

Step 2. Connect Power Supply to Wired Controller

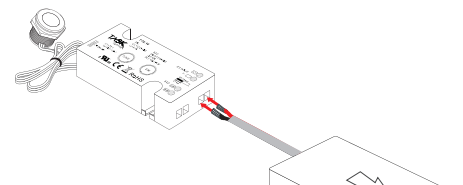
NOTE: Provide receptacle for Plug-in Power Supply or use existing outlet behind the microwave, refrigerator, dishwasher, or under the sink. If using our in-line low voltage switches, sensors, or Wireless Control systems, see instructions packaged with the components.

Plug-In Power Supply



Cut a length of connection wire to run from Power Supply to Wired Controller. Strip 1/4" insulation from both ends of wire, twist each wire, and fold stripped wires in half. Use Female Barrel Connector (T-FBC) to run wire from Plug-in Power Supply. Red wire to (V+) terminal and Black wire to (V-) terminal on the wired controller.

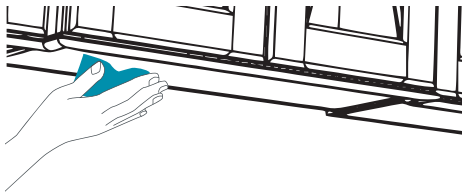
Waterproof Hardwired Power Supply



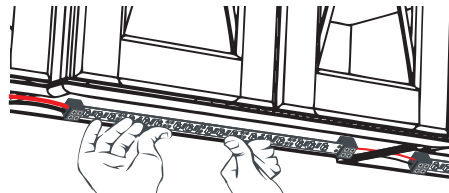
Insert Red wire from Power Supply to (WW) on Wired Controller and Black Wire from Power Supply to (CW).

Step 3. Mount Tape Light

For fuller countertop coverage, install the Tape Light 1-1/2" from the back of the cabinet face frame or light rail.

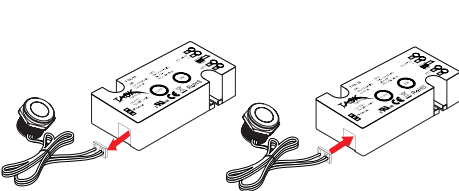


1. Make sure mounting surface is clean, dry, oil-free, and dust-free. Using the Adhesion Promoter Wipes will ensure an extra tight bond to surface.

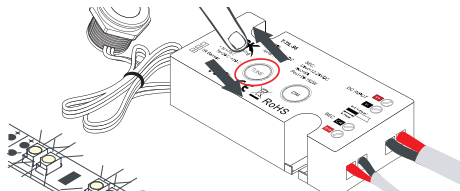


2. Peel the adhesive backing from the Tape Light and mount directly to cleaned surface. Use adhesive pads for securing the connectors to surface.

Step 3. Using the Wired Controller and included Hand Wave Sensor

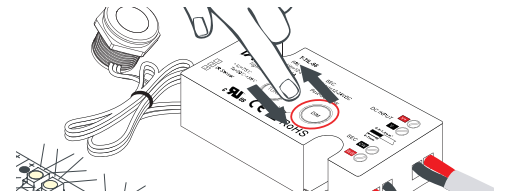


1. **OPTIONAL:** If using the included Hand Wave Sensor to turn lights on/off, drill an 11/16" hole in desired location. Unplug wire from Wired Controller, unscrew nut on sensor and run through hole, and plug back into the Wired Controller. Push Wave Sensor into drilled hole and screw nut back on sensor to secure in place. Wave hand in front of Sensor to turn the lights on/off.



2. Click the "TUNE" button to select between the pre-programmed white temperatures of 2700K, 3000K, 4000K, or 5000K.

Press and hold the "TUNE" button to fade through the white temperature from 2700K to 5000K temperature. Release the button once the desired color temperature is found.



3. Click the "DIM" button to set brightness to pre-programmed brightness of 0%, 33%, 66% and 100%.

Press and hold the "DIM" button to brighten the lights to the desired temperature, press and hold again to dim down brightness of lights.