



Risk of Fire or Shock:

LED Retrofit Kit installation requires knowledge of luminaires electrical systems. If not qualified, do not attempt installation. Contact a qualified electrician.

Supply conductors (power wiring) connecting the fixture must be rated minimum 90°C. If uncertain, consult an electrician.

Risk of Electric Shock:

Disconnect power at fuse of circuit breaker before installing or servicing.

Risk of Fire or Electric Shock:

Install this kit only in the luminaires that has the constructions features and dimensions shown in the photographs and/or drawings.

Do not make or alter any open holes in an enclosure of wiring or electrical components during kit installation.

Do not alter, relocate, or remove wiring, lampholders, power supply, or any other electrical component.

To prevent wiring damage or abrasion, do not expose wiring to edges of sheet metal or other sharp objects.

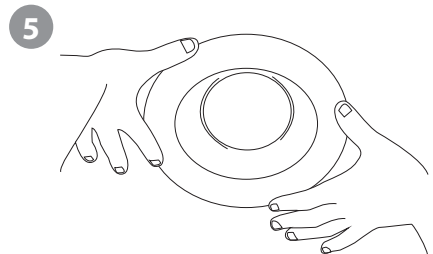
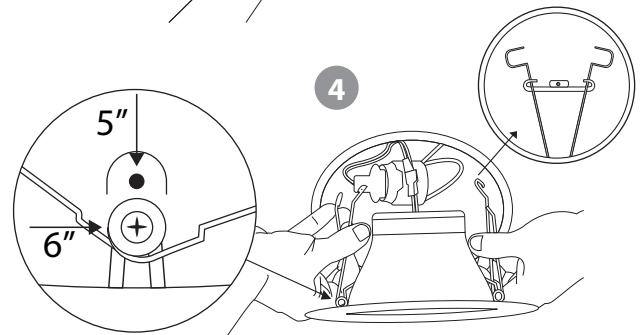
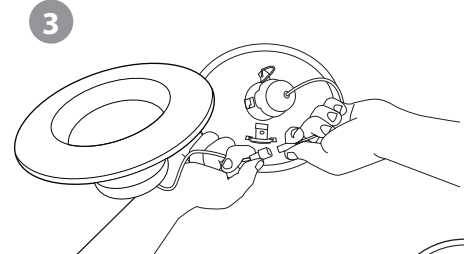
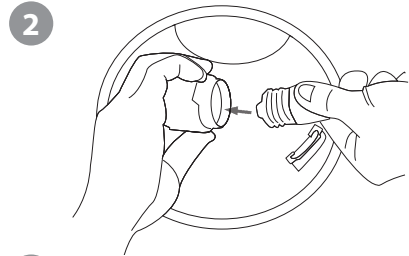
CAUTION: To avoid possible electric shock, be sure that power supply is turned off at fuse box or circuit breaker before attempting installation or servicing of the fixture. For safest operation read and become familiar with complete installation instructions prior to use.

NOTE: This luminaire has been modified and can no longer operate the originally intended lamp. The provided label must be applied to the retrofitted luminaire where visible during re-lamping.

COMPATIBLE HOUSINGS: For a selection of NICOR housings, please visit our website: www.nicorlighting.com

The DLR56-SD Sunset Dimming LED Retrofit is designed to fit into a 5" or 6" housing with torsion spring receiving brackets. For use in a 5" housing simply compress the torsion spring arms inward until torsion springs line-up with mounting brackets. Torsion arms serve as grounding connection.

- 1 Carefully unpack the downlight from its packaging. Inspect product for defects due to shipping.
- 2 Disconnect Edison base from downlight and screw into socket inside recessed housing. (GU24 base option available).
- 3 Plug the downlight connector into the Edison (or GU24) base connector.
- 4 Adjust torsion spring position based on can diameter. Squeeze torsion springs together and install into torsion spring brackets inside recessed housing.
- 5 Carefully route wires into housing and push the downlight up. Push flush to ceiling surface.



Warranty

For complete warranty information please visit : <http://nicorlighting.com>